

S. J. McKee Archives



Lovstrom Block A - summary

<http://archives.brandonu.ca/en/permalink/descriptions12451>

Part Of: RG 7 Beverley Nicholson fonds

Description Level: Sub-series

Series Number: 3.2

Accession Number: 1-2010

GMD: multiple media

Date Range: 1987

History /

Biographical:

Block A was the most southern site in the locale. The excavation block consisted of 12 contiguous 1m² units dug in a 3m x 4m rectangle. The block was the least productive of cultural materials, and bone preservation was the poorest. Under the sod, the black loam layer appeared at 5 cm below surface, and the glacial clay at 25 cm below surface. Excavators described the soil matrix as gritty and silty, and it became concrete hard when dried. The occupation or bone layer extended from 10 to 25 cm below surface and consisted of a contiguous scatter of FCR and unidentifiable large ungulate bone which was heavily processed and intensively scavenged by carnivores. Most cultural materials were recovered within this layer. Fire cracked rock (FCR) and small burnt bone fragments were present but no intact hearths or processing features were evident.

Non-cultural materials included limestone and other natural pebbles derived from the parent till. (These small limestone pebbles were apparent in the occupation layers in other blocks as well). Root and rodent disturbance was extensive throughout Block A. Most units were excavated to gravelly clay till. Nine of the twelve units were dug to level 4b, which ended at 40 cm b.s.

No further excavations were done at this site. No C14 dates were taken.

Scope and Content:

Sub-sub-sub series contains: Summary information of field methodology, number and co-ordinates of excavations, personnel and their staff position; Field journals are daily records of recoveries, features and activities at the site; Site records include excavation level and unit summaries, feature sheets, profiles; sample records and maps; Artifact catalogues are lists and identifications of all artifacts recovered; Photographs are of excavation units, features, the landscape and personnel.

Name Access: Lovstrom Block A - summary

Subject Access: Archaeology
Lovstrom locale
Lovstrom Block A



Lovstrom Block C - summary

<http://archives.brandonu.ca/en/permalink/descriptions12517>

Part Of: RG 7 Beverley Nicholson fonds

Description Level: Sub-series

Series Number: 3.4

Accession Number: 1-2010

GMD: multiple media

Date Range: 1987

History /

Biographical:

Block C was situated in sparse oak forest with an understory of saskatoon, hazelnut and a thick ground cover of poison ivy and sarsaparilla. The block measured 3m and 3m and contained nine excavation units. All units were excavated to 35cm below surface. The soil horizons were much like the other blocks, except for a rusty brown stain in the first level, giving the upper black loam a mottled appearance. The brown patches were clay mixed with loam and were harder than the surrounding matrix. No definitive interpretation of these phenomena was attempted but this effect may be the result of natural brush or forest fires. Under the 5cm so d/humus (Ah) layer, the loam horizon extended approximately 5cm – 25 cm below surface, and averaged 20 cm thick. Bone was concentrated within this horizon between 10 cm – 20 cm below surface.

Block C was notable for its concentrations of articulated bison bone. Most noteworthy was an articulated unit composed of lumbar vertebrae, pelvis, and sacrum. Several thoracic vertebra/proximal rib end concentrations were also recovered. There were more vertebrae and rib sections recovered in the units in proportion to other bones. A few sherds, some debitage and a single Prairie Side-Notched point fragment were among the recoveries. Based on the quantity of bone, the density of the bone layer, and the articulated butchering units the area has been interpreted as a bone midden.

Faunal material was analysed by Jessica MacKenzie for her Honours Thesis: "A reconstruction of butchering processes in Block C from the Lovstrom site DjLx-1 in Southwestern Manitoba."

Radiocarbon date: 850/115BP XU 79.

Scope and Content:

Sub-sub-sub series contains: Summary information of field methodology, number and co-ordinates of excavations, personnel and their staff position; Field journals are daily records of recoveries, features and activities at the site; Site records include excavation level and unit summaries, feature sheets, profiles; sample records and maps; Artifact catalogues are lists and identifications of all artifacts recovered; Photographs are of excavation units, features, the landscape and personnel.

Name Access: Lovstrom Block C - summary

Subject Access: Archaeology
Lovstrom locale
Lovstrom Block C



Lovstrom Block D - summary

<http://archives.brandonu.ca/en/permalink/descriptions12540>

Part Of: RG 7 Beverley Nicholson fonds

Description Level: Sub-series

Series Number: 3.5

Accession Number: 1-2010

GMD: multiple media

Date Range: 1987 - 1988

History /

Biographical:

Block D was wooded with oak and an understory of saskatoon and hazelnut with a thick ground cover of poison ivy and sarsaparilla. Root and rodent disturbance was extensive. Based on the recoveries from Test Unit 22 during the survey, further excavations were carried out. Two units 87 and 93 were excavated in 1987. A further four units were excavated in 1988. There appears to be a pre contact occupation and a protohistoric feature within the block.

Diagnostic lithics included a chert Plains Side-notch projectile point, and a large Woodland side-notched point. The lithic materials from Block D are primarily local cherts followed in abundance by Knife River Flint and Tongue River Silicified Sediment – both of which are exotics imported from the southwest. Faunal remains were primarily bison.

Thin-walled obliterated fabric impressed pottery with grit temper was recovered in all units. Diagnostic ceramics included two rims, one with a fabric impressed exterior and the lip notched with dowel impressions, and a second thick walled rim was fabric impressed to the lip. The ceramic wares appear to be essentially a Woodland complex with overtones of Plains influence.

RC date: 230/90 BP.

Scope and Content:

Sub-series has been divided into sub sub series including: Lovstrom Block D 1987 and Lovstrom Block D 1988.

Name Access: Lovstrom Block D - summary

Subject Access: Archaeology
Lovstrom locale
Lovstrom Block D



Lovstrom Block D 1987

<http://archives.brandonu.ca/en/permalink/descriptions12541>

Part Of: RG 7 Beverley Nicholson fonds
Description Level: Sub sub series
Series Number: 3.5.1
Accession Number: 1-2010
GMD: multiple media
Date Range: 1987
Material Details: Field journals have been scanned in multi-page PDF files. Artifact catalogues are PDF files in spreadsheet format. Photographs are in jpeg format.

History /

Biographical:

Block D is a wooded with oak and an understory of saskatoon and hazelnut with a thick ground cover of poison ivy and sarsaparilla. Root and rodent disturbance was extensive.

Directed by Dr. Nicholson and with Jane Gibson as crew chief, two units were opened in Block D in 1987. A hearth was identified with a ring of stones containing charcoal and burnt bone. Recoveries included two rim sherds with tool-impressed decorations along the outer edge and two prairie side-notched points. Associated bone was primarily appendicular, indicating secondary butchering.

A radiocarbon date of 230+/-90 B.P. recovered in 1987 from 17 cm below surface is consistent with a Protohistoric occupation.

Scope and Content:

Sub-sub-sub series contains: Summary information of field methodology, number and co-ordinates of excavations, personnel and their staff position; Field journals are daily records of recoveries, features and activities at the site; Site records include excavation level and unit summaries, feature sheets, profiles; sample records and maps; Artifact catalogues are lists and identifications of all artifacts recovered; Photographs are of excavation units, features, the landscape and personnel.

Name Access: Lovstrom Block D 1987
Subject Access: Archaeology
Lovstrom locale
Lovstrom Block D



Lovstrom Block D 1988

<http://archives.brandonu.ca/en/permalink/descriptions12554>

Part Of: RG 7 Beverley Nicholson fonds
Description Level: Sub sub series
Series Number: 3.5.2
Accession Number: 1-2010
GMD: multiple media
Date Range: 1988
Material Details: Field journals have been scanned in multi-page PDF files. Artifact catalogues are PDF files in spreadsheet format. Photographs are in jpeg format.

History /

Biographical:

Block D is a wooded with oak and an understory of saskatoon and hazelnut with a thick ground cover of poison ivy and sarsaparilla. Root and rodent disturbance was extensive.

Directed by Dr. Nicholson with Ian Kuijit as crew chief, five units were opened in Block D in 1988. Four units were excavated: 88, 91, 92 and 94. A feature in units 91 and 92 contained extensive deposits of large bison bone and fire-cracked rock. Several of the lower limb elements were articulated. Bone deposits were associated with numerous large fire-cracked rocks and were clustered in an area of one meter. Also recovered were a side-notched projectile point and two historic gun flints.

Judging from the association of the gun flints, projectile points, and bison bone, as well as the radiocarbon date of 230+/-90 B.P. recovered in 1987, it appears that this feature is from the Protohistoric period and related to refuse disposal.

Scope and Content:

Sub-sub-sub series contains: Summary information of field methodology, number and co-ordinates of excavations, personnel and their staff position; Field journals are daily records of recoveries, features and activities at the site; Site records include excavation level and unit summaries, feature sheets, profiles; sample records and maps; Artifact catalogues are lists and identifications of all artifacts recovered; Photographs are of excavation units, features, the landscape and personnel.

Name Access: Lovstrom Block D 1988
Subject Access: Archaeology
Lovstrom locale
Lovstrom Block D



Lovstrom Block E - summary

<http://archives.brandonu.ca/en/permalink/descriptions12567>

Part Of: RG 7 Beverley Nicholson fonds

Description Level: Sub-series

Series Number: 3.6

Accession Number: 1-2010

GMD: multiple media

Date Range: 1987 - 1991

History /

Biographical:

This site is situated in a naturally sheltered area with a low rise to the east and south partly encircling a flat area open to the west. Present natural vegetation is an open oak forest with a light understory of saskatoon, hazelnut, poison ivy and sarsaparilla. It is situated on the till plain at the upper end of a ravine leading to Jock's Creek.

Two test units six meters apart were excavated in 1987 and produced cultural materials which warranted a block excavation, so seven contiguous 1m² units were then opened. These units proved to be very productive of cultural remains. Subsequent excavations in 1988 increased the number of excavated units to 21. In 1991 a further eight units were excavated for a total of 29 excavations and two test units. Excavations went deeper in this block than in Blocks C or B. Remains from the block included bison bone, bone tools, fire-cracked rock, ceramics, lithics including tools and debitage and a hearth. Another occupation was recovered in 1991 containing a hearth and living floor.

Radiocarbon samples have produced two distinct sets of radiocarbon dates from 1987 and 1988 excavations. There appears to be two or possibly three cultural horizons definable within this block.

An upper cultural horizon, located between 14-21 cm below surface, contains large bison bone and fire-cracked rock dating to 465/100B.P from XU 128.

A lower horizon in the 20-25 cm level contained FCR, bison bone and lithic scatter that was dated to 675/70 B.P. from XU 122 and 715/110 from XU 114.

Scope and Content:

Sub-series has been divided into sub sub series including: Lovstrom Block E 1987, Lovstrom Block E 1988 and Lovstrom Block E 1991.

Name Access: Lovstrom Block E - summary

Subject Access: Archaeology
Lovstrom locale
Lovstrom Block E



Lovstrom Block E 1987

<http://archives.brandonu.ca/en/permalink/descriptions12568>

Part Of: RG 7 Beverley Nicholson fonds
Description Level: Sub sub series
Series Number: 3.6.1
Accession Number: 1-2010
GMD: multiple media
Date Range: 1987
Material Details: Field journals have been scanned in multi-page PDF files. Artifact catalogues are PDF files in spreadsheet format. Photographs are in jpeg format.

History /

Biographical:

Directed by Dr. Nicholson and with Jane Gibson as crew chief, two test units TU 107 and TU 108 were excavated six meters apart in 1987 and produced cultural materials which warranted a block excavation. Seven contiguous 1m² units were opened in 1987 (XU 118, 119, 122, 123, 125, 126 (TU108) and 127). This block proved to be very productive of cultural remains. Large bison bone and fire-cracked rock indicated butchering/processing areas. Two bone tools, fabricated from scapulae were recovered. One is a bone knife – possibly a squash knife – and the other is a bifurcated scapula, which may have been a hoe.

Scope and Content:

Sub-sub-sub series contains: Summary information of field methodology, number and co-ordinates of excavations, personnel and their staff position; Field journals are daily records of recoveries, features and activities at the site; Site records include excavation level and unit summaries, feature sheets, profiles; sample records and maps; Artifact catalogues are lists and identifications of all artifacts recovered; Photographs are of excavation units, features, the landscape and personnel.

Name Access: Lovstrom Block E 1987
Subject Access: Archaeology
Lovstrom locale
Lovstrom Block E



Lovstrom Block E 1988

<http://archives.brandonu.ca/en/permalink/descriptions12590>

Part Of: RG 7 Beverley Nicholson fonds
Description Level: Sub sub series
Series Number: 3.6.2
Accession Number: 1-2010
GMD: multiple media
Date Range: 1988
Material Details: Field journals have been scanned in multi-page PDF files. Artifact catalogues are PDF files in spreadsheet format. Photographs are in jpeg format.

History /
Biographical:

Directed by Dr. Nicholson and with Ian Kuijt as crew chief, fourteen additional units were excavated in Block E in 1988. Stratigraphic evidence of distinct activity areas at successive depths and radiocarbon dates indicate at least three occupations (380 BP, 700 BP and 860 B P).

Three identified activity clusters occur stratigraphically, supporting these dated occupations. A clear distinction between Blackduck and Vickers Focus ceramics is evident in this Block. Sixteen small side-notched and un-notched points were recovered in this excavation series as well as numerous unifacial scrapers. Fragments from a grey soapstone tube were also recovered.

Scope and Content:

Sub-sub-sub series contains: Summary information of field methodology, number and co-ordinates of excavations, personnel and their staff position; Field journals are daily records of recoveries, features and activities at the site; Site records include excavation level and unit summaries, feature sheets, profiles; sample records and maps; Artifact catalogues are lists and identifications of all artifacts recovered; Photographs are of excavation units, features, the landscape and personnel.

Name Access: Lovstrom Block E 1988
Subject Access: Archaeology
Lovstrom locale
Lovstrom Block E



Lovstrom Block B - summary

<http://archives.brandonu.ca/en/permalink/descriptions12479>

Part Of: RG 7 Beverley Nicholson fonds

Description Level: Sub-series

Series Number: 3.3

Accession Number: 1-2010

GMD: multiple media

Date Range: 1987

History /

Biographical:

Block B consisted of 20 contiguous 1m² units excavated to 30 cm below surface. (except unit 58 which was excavated to 35 cm bs to obtain extended soil profile). The block is situated in recent oak and poplar forest at the head of a ravine leading to Jock's Creek, adjacent to an area cleared for market gardening. As was the case with Block A, the understory is heavily overgrown with hazelnut, chokecherry, saskatoon, and a poison ivy/sarsaparilla ground cover.

The soil levels below the sod in Block B consisted of a black, silty, and gritty loam layer from 5 cm to 23 cm below surface, a yellow and sandy clay from 23 cm to 30 cm below surface, and glacial till at 30 cm below surface. As in Block A, limestone cobbles were found throughout the occupation level around the bone. It is evident that bioturbation – primarily tree roots and rodent burrowing – have significantly altered patterns of original deposition of lithics, ceramics and small bone.

The faunal layer lay close to the surface, situated entirely in the black loam 5 cm – 23 cm below surface. The 23 cm depth also marked the end of the dark silty loam. At 10 cm below surface, a discernible patterning of the bone appeared. Concentrations of bone in narrow rows ran in an irregular pattern from the northwest to the southeast part of the block. This pattern was most apparent in the north end of the block which is the highest point in the block. In the same 1m² unit, patches of weathered, very poorly preserved bone would be found lying close to patches of well preserved bone. It is believed that this variability in preservation results from uneven rates of burial due to taphic activities of pocket gophers or other agents of bioturbation. The same pattern of uneven preservation occurs over much of the locale but is most evident in Block B.

Diagnostic lithics included eleven projectile points that were predominantly Plains or Prairie Side-notch types, but included two unnotched triangular points. Cord-wrapped impressed rim sherds and body sherds were recovered. The ceramics are variants of the Woodland Blackduck horizon.

RC dates: XU49 – 675/80 BP XU 59 – 705/75BP.

Scope and Content:

Sub-sub-sub series contains: Summary information of field methodology, number and co-ordinates of excavations, personnel and their staff position; Field journals are daily records of recoveries, features and activities at the site; Site records include excavation level and unit summaries, feature sheets, profiles; sample records and maps; Artifact catalogues are lists and identifications of all artifacts recovered; Photographs are of excavation units, features, the landscape and personnel.

Name Access: Lovstrom Block B - summary

Subject Access: Archaeology
Lovstrom locale
Lovstrom Block B



Lovstrom Block F - summary

<http://archives.brandonu.ca/en/permalink/descriptions12617>

Part Of: RG 7 Beverley Nicholson fonds

Description Level: Sub-series

Series Number: 3.7

Accession Number: 1-2010

GMD: multiple media

Date Range: 1988

History /

Biographical:

In 1988 four 1m² units were excavated in this Block F. The forest cover is identical to that of Block E, with an open oak forest with a light understory of saskatoon, hazelnut, poison ivy and sarsaparilla.

Underneath the litter mat (Ah) is a shallow, 15-20 cm "A" horizon of dark grey/brown silty loam with a high representation of pebble size clasts. The glacial clays, encountered at 20 cm below surface, consist of a matrix of light tan sandy clays containing rounded pebble to cobble size rocks.

The recoveries from this block consisted of a few ceramics, including Vickers Focus rim sherds, four lithic tools and a number of small bison bone fragments. There was no discernible cultural stratigraphy in the four 1m² units and the limited deposits of bone, ceramics and lithics were dispersed randomly throughout the 25 cm of cultural matrix. The lithic materials frequencies were similar to those in Block E with local cherts and KRF being the most abundant categories. A small amount of fire-cracked rock and a few large identifiable bison bones were recovered – all distributed randomly with little evidence for any pattern of clustering.

No RC dates.

Scope and Content:

Sub-sub-sub series contains: Summary information of field methodology, number and co-ordinates of excavations, personnel and their staff position; Field journals are daily records of recoveries, features and activities at the site; Site records include excavation level and unit summaries, feature sheets, profiles; sample records and maps; Artifact catalogues are lists and identifications of all artifacts recovered; Photographs are of excavation units, features, the landscape and personnel.

Name Access: Lovstrom Block F - summary

Subject Access: Archaeology
Lovstrom locale
Lovstrom Block F



Lovstrom Block H - summary

<http://archives.brandonu.ca/en/permalink/descriptions12638>

Part Of: RG 7 Beverley Nicholson fonds

Description Level: Sub-series

Series Number: 3.9

Accession Number: 1-2010

GMD: multiple media

Date Range: 1988 - 1991

History /

Biographical:

The vegetation in block H is similar to other areas in the locale with an open oak forest with a light understory of saskatoon, hazelnut, poison ivy and sarsaparilla.

The excavations of the eight 1m² units in 1988 resulted in the recovery of over 650 ceramic fragments including 20 rim sherds from at least four vessels, a grooved maul, fire-cracked rock, lithic debitage and a reworked Avonlea projectile point. A large amount of bison bone, including a number of axial elements and a fragmented skull were also recovered.

Based on the 1988 recoveries at the site further excavations took place in 1991. Nine excavation units were opened next to the previous excavations. Another 250 ceramic sherds were recovered in 1991. Nine vessels have been identified based on rim sherds. Vickers Focus and Woodland vessels have been identified and two vessels similar to Scattered Village Complex were recovered.

The lithic material assemblage is intermediate between Blocks G and E with KRF being the most frequent material category followed by local cherts.

Two features, a hearth and a curvilinear arrangement of rock were recovered. The high numbers of ceramic fragments suggests a habitation area, rather than hunting or butchering behavior. However, the separation of occupations at the site is difficult to establish and there may be different uses of the site by successive occupations.

Radiocarbon dates from this block indicate two occupations separated in time by some 300 years. XU 181 – 405/110 BP and XU 184 – 780/110 BP.

Scope and Content:

Sub-series has been divided into sub sub series including: Lovstrom Block H 1988 and Lovstrom Block H 1991.

Name Access: Lovstrom Block H - summary

Subject Access: Archaeology
Lovstrom locale
Lovstrom Block H



Lovstrom Block H 1988

<http://archives.brandonu.ca/en/permalink/descriptions12639>

Part Of: RG 7 Beverley Nicholson fonds

Description Level: Sub sub series

Series Number: 3.9.1

Accession Number: 1-2010

GMD: multiple media
Date Range: 1988
Material Details: Field journals have been scanned in multi-page PDF files. Artifact catalogues are PDF files in spreadsheet format. Photographs are in jpeg format.
History /
Biographical:

Directed by Dr. Nicholson and with Ian Kuijt as crew chief, eight units were excavated in Block H in 1988. The vegetation is similar to other areas in the locale with an open oak forest with a light understory of saskatoon, hazelnut, poison ivy and sarsaparilla.

Radiocarbon dates from this block indicate two occupations separated in time by some 300 years. The excavation of the eight 1m² units resulted in the recovery of over 650 ceramic fragments including 20 rim sherds from at least four vessels, a grooved maul, fire-cracked rock, lithic debitage and a reworked Avonlea projectile point. A large amount of bison bone, including a number of axial elements and a fragmented skull were also recovered.

The 650 ceramics recovered are of two kinds, representing at least four vessels. Stylistically, two of these vessels appear to be from the Vickers Focus and the third vessel may be Mortlach ware. The fourth vessel appears to be Blackduck and probably comes from the lower occupation. Also encountered were what is possibly a thin ash deposit in unit 180. The presence of a large number of bison axial elements is suggestive of primary butchering activities. Several canid bones were recovered scattered among the bison bone. Although there is no visible stratigraphic evidence, the 14C dates and the different ceramic types indicate more than one occupation in this area and it is likely that several types of behavior and use of space are represented.

High numbers of ceramic fragments are often assumed to be associated with activities characteristic of habitation areas, rather than hunting or butchering behavior. The lithic material assemblage is intermediate between Blocks G and E with KRF being the most frequent material category followed by local cherts.

Scope and Content:

Sub-sub-sub series contains: Summary information of field methodology, number and co-ordinates of excavations, personnel and their staff position; Field journals are daily records of recoveries, features and activities at the site; Site records include excavation level and unit summaries, feature sheets, profiles; sample records and maps; Artifact catalogues are lists and identifications of all artifacts recovered; Photographs are of excavation units, features, the landscape and personnel.

Name Access: Lovstrom Block H 1988
Subject Access: Archaeology
Lovstrom locale
Lovstrom Block H



Lovstrom Block E 1991

<http://archives.brandonu.ca/en/permalink/descriptions12655>

Part Of: RG 7 Beverley Nicholson fonds
Description Level: Sub sub series
Series Number: 3.6.3
Accession Number: 1-2010
GMD: multiple media
Date Range: 1991
Material Details: Field journals have been scanned in multi-page PDF files. Artifact catalogues are PDF files in spreadsheet format. Photographs are in jpeg format.

History /

Biographical:

Excavations took place in block E in 1987 and 1988 with 21 units opened. Ten further units were excavated in 1991 as part of the Brandon University Archaeological Field School, directed by Dr. Nicholson with Brett Waddell as crew chief and Theresa Hill as field assistant.

In 1991 a hearth was identified in Block E as well as a cluster of spoil dirt piles believed to represent material from a pit feature identified in the 1988 excavations. The pit feature is believed to be related to the recovery of clay that may have been used to build ceramic vessels.

Stratigraphic evidence of distinct activity areas at successive depths and radiocarbon dates indicate at least three occupations (380 BP, 700 BP and 860 B P). Three identified activity clusters occur stratigraphically, supporting these dated occupations.

Large numbers of lithics were recovered, forming an assemblage dominated by SRC and KRF with lesser amounts of porcellanite and quartzite. The upper occupation contained some Tongue River Silicified Sediment (TRSS). Eight Prairie Side-Notched points were recovered as well as a lunate biface and an end scraper. Fragments from a grey soapstone tube were also recovered.

Scope and Content:

Sub-sub-sub series contains: Summary information of field methodology, number and co-ordinates of excavations, personnel and their staff position; Field journals are daily records of recoveries, features and activities at the site; Site records include excavation level and unit summaries, feature sheets, profiles; sample records and maps; Artifact catalogues are lists and identifications of all artifacts recovered; Photographs are of excavation units, features, the landscape and personnel.

Name Access: Lovstrom Block E 1991
Subject Access: Archaeology
Lovstrom locale
Lovstrom Block E



Lovstrom Block H 1991

<http://archives.brandonu.ca/en/permalink/descriptions12671>

Part Of: RG 7 Beverley Nicholson fonds
Description Level: Sub sub series
Series Number: 3.9.2
Accession Number: 1-2010
GMD: multiple media
Date Range: 1991
Material Details: Field journals have been scanned in multi-page PDF files. Artifact catalogues are PDF files in spreadsheet format. Photographs are in jpeg format.

History /

Biographical:

Based on the recoveries at the Block H in 1988, further excavations took place in 1991. Nine excavation units were opened next to the previous excavations. Another 250 ceramic sherds were recovered in 1991. Nine vessels have been identified based on rim sherds. Vickers Focus and Woodland vessels have been identified and two vessels similar to Scattered Village Complex were recovered.

The lithic material assemblage is intermediate primarily KRF followed by local cherts. Two features, a hearth and a curvilinear arrangement of rock were recovered during the 1991 excavations.

The high numbers of ceramic fragments suggests a habitation area, rather than hunting or butchering behavior. However, the separation of occupations at the site is difficult to establish and there may be different uses of the site by successive occupations.

Scope and Content:

Sub-sub-sub series contains: Summary information of field methodology, number and co-ordinates of excavations, personnel and their staff position; Field journals are daily records of recoveries, features and activities at the site; Site records include excavation level and unit summaries, feature sheets, profiles; sample records and maps; Artifact catalogues are lists and identifications of all artifacts recovered; Photographs are of excavation units, features, the landscape and personnel.

Name Access: Lovstrom Block H 1991
Subject Access: Archaeology
Lovstrom locale
Lovstrom Block H



Lovstrom Block A - site co-ordinates

<http://archives.brandonu.ca/en/permalink/descriptions12452>

Part Of: RG 7 Beverley Nicholson fonds

Description Level: sub sub sub series

Series Number: 3.2.1.1

Accession Number: 1-2010

GMD: multiple media

Date Range: 1987

Material Details: Field journals have been scanned in multi-page PDF files. Artifact catalogues are PDF files in spreadsheet format. Photographs are in jpeg format.

History /

Biographical:

Large scale excavations of five block sites took place in 1987 under the direction of Bev Nicholson with Jane Gibson as crew chief. Block A consisted of 12 excavation units.

Scope and Content:

Sub-sub-sub series contains: Summary information of field methodology, number and co-ordinates of excavations, personnel and their staff position.

Name Access: Lovstrom Block A - site co-ordinates

Subject Access: Archaeology
Lovstrom locale
Lovstrom Block A

Documents

ABO 70 A Lovstrom Locale 1987

3.2 Lovstrom Block A

3.2.1 Lovstrom Block A 1987

3.2.1.1 Summary Information:

Large scale excavations of five block sites took place in 1987 under the direction of Bev Nicholson with Jane Gibson as crew chief.

Block A consisted of 12 excavation units.

The initial dataset was established as PMSI, a subsequent dataset with the co-ordinates of 50000000 was used to facilitate computer cataloging.

Excavation	Original Name	Coordinate	Other
301 24	42N024W	4140024W	John Davidson/Lynn Thomas
301 25	42N025W	4140025W	Lynn Thomas
301 27	42N027W	4140027W	Margaret Nicholson
301 28	42N028W	4140028W	Margaret Nicholson
301 30	42N030W	4140030W	Margaret Nicholson
301 31	42N031W	4140031W	Lynn Thomas
301 32	42N032W	4140032W	John Davidson/Lynn Thomas
301 33	42N033W	4140033W	Thomas Hill
301 34	42N034W	4140034W	Thomas Hill
301 35	42N035W	4140035W	Mike Brown
301 36	42N036W	4140036W	Lynn Thomas
301 39	42N039W	4140039W	Rick Davidson/Margaret Nicholson
301 40	42N040W	4140040W	Lynn Thomas

3.2.1.1_Sum.pdf

Read PDF

Download PDF



Lovstrom Block G 1988 - summary

<http://archives.brandonu.ca/en/permalink/descriptions12628>

Part Of: RG 7 Beverley Nicholson fonds

Description Level: Sub-series

Series Number: 3.8

Accession Number: 1-2010

GMD: multiple media

Date Range: 1988

History /

Biographical:

In 1988 four units were excavated in Block G. The vegetation is similar to other areas in the locale with an open oak forest with a light understory of saskatoon, hazelnut, poison ivy and sarsaparilla.

Excavations recovered artifacts between 0 cm – 15 cm b.s. The cultural deposits are very shallow and it is quite possible that what appears to be a single occupation may in fact represent multiple occupation compressed deposits as a result of deflation or the lack of sedimentation in this raised area. This latter view is supported by the ceramics which appear to be a mixture of Blackduck and Vickers Focus wares.

The frequency and distribution of cultural material from block G contrasts with that of other sites in the locale. While the diagnostic materials are similar, the nature of the background debris and the associated lithic assemblage suggests that this area was utilized for a different set of activities.

Unlike Blocks E and H, there is very little in the way of ceramics, fire-cracked rock or bison bone, yet a significant amount of lithic debitage and six Plains/Prairie Side-notched projectile points were recovered. No unifaces or scrapers were recovered. This may be an area where activities such as manufacture and hafting of projectile points; hunting activities, butchering and refuse disposal took place.

No RC dates were taken.

Scope and Content:

Sub-sub-sub series contains: Summary information of field methodology, number and co-ordinates of excavations, personnel and their staff position; Field journals are daily records of recoveries, features and activities at the site; Site records include excavation level and unit summaries, feature sheets, profiles; sample records and maps; Artifact catalogues are lists and identifications of all artifacts recovered; Photographs are of excavation units, features, the landscape and personnel.

Name Access: Lovstrom Block G 1988 - summary

Subject Access: Archaeology
Lovstrom locale
Lovstrom Block G



Lovstrom Block C - site co-ordinates

<http://archives.brandonu.ca/en/permalink/descriptions12518>

Part Of: RG 7 Beverley Nicholson fonds

Description Level: sub sub sub series

Series Number: 3.4.1.1

Accession Number: 1-2010

GMD: multiple media

Date Range: 1987

Material Details: Field journals have been scanned in multi-page PDF files. Artifact catalogues are PDF files in spreadsheet format. Photographs are in jpeg format.

History /

Biographical:

Large scale excavations of five block sites took place in 1987 under the direction of Bev Nicholson with Jane Gibson as crew chief. Block C consisted of nine excavation units. Miggs Green was Block C assistant.

Scope and Content:


Sub-sub-sub series contains: Summary information of field methodology, number and co-ordinates of excavations, personnel and their staff position.


Name Access: Lovstrom Block C - site co-ordinates

Subject Access: Archaeology
Lovstrom locale
Lovstrom Block C

Documents

3.4.1.1_Sum.pdf

 Read PDF

 Download PDF



Lovstrom Block A - Bev Nicholson field journal

<http://archives.brandonu.ca/en/permalink/descriptions12453>

Part Of:	RG 7 Beverley Nicholson fonds
Description Level:	File
Series Number:	3.2.1.2
File Number:	1
Accession Number:	1-2010
GMD:	multiple media
Date Range:	1987
Physical Description:	8 pages
Material Details:	Field journals have been scanned in multi-page PDF files.

History /

Biographical:

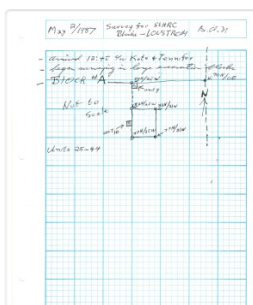
Bev Nicholson was director of the project and his field journal relates to all the Blocks excavated at the locale.

Scope and Content:

Record of daily observations at the site including: excavation methods, items recovered, features, local environment and weather.

Name Access:	Lovstrom Block A - Bev Nicholson field journal
Subject Access:	Archaeology
	Lovstrom locale
	Lovstrom Block A
	Lovstrom Block A - Bev Nicholson field journal

Documents



3.2.1.2.1_Nicholson.pdf

 Read PDF

 Download PDF



Lovstrom Block B - site co-ordinates

<http://archives.brandonu.ca/en/permalink/descriptions12480>

Part Of: RG 7 Beverley Nicholson fonds

Description Level: sub sub sub series

Series Number: 3.3.1.1

Accession Number: 1-2010

GMD: multiple media

Date Range: 1987

Material Details: Field journals have been scanned in multi-page PDF files. Artifact catalogues are PDF files in spreadsheet format. Photographs are in jpeg format.

History /

Biographical:

Large scale excavations of five block sites took place in 1987 under the direction of Bev Nicholson with Jane Gibson as crew chief. Block B consisted of 21 excavation units.

Scope and Content:

Sub-sub-sub series contains: Summary information of field methodology, number and co-ordinates of excavations, personnel and their staff position.

Name Access: Lovstrom Block B - site co-ordinates

Subject Access: Archaeology

Lovstrom locale

Lovstrom Block B

Documents

ABC W & L Lovstrom Locale 1987
3.3.1.1 Summary Information

3.3.1.1_Sum.pdf

Read PDF

Download PDF



Lovstrom Block F - site co-ordinates

<http://archives.brandonu.ca/en/permalink/descriptions12618>

Part Of:	RG 7 Beverley Nicholson fonds
Description Level:	sub sub sub series
Series Number:	3.7.1.1
Accession Number:	1-2010
GMD:	multiple media
Date Range:	1988
Material Details:	Field journals have been scanned in multi-page PDF files. Artifact catalogues are PDF files in spreadsheet format. Photographs are in jpeg format.

History /

Biographical:

Large scale excavations of four block sites took place in 1988 under the direction of Bev Nicholson with Ian Kuijt as crew chief. Block F consisted of 4 excavation units.

Scope and Content:

Sub-sub-sub series contains: Summary information of field methodology, number and co-ordinates of excavations, personnel and their staff position.

Name Access: Lovstrom Block F - site co-ordinates

Subject Access: Archaeology
Lovstrom locale
Lovstrom Block F

Documents

ABC W & Lovstrom Locals DP-4

3.7.1 Lovstrom Block F

3.7.1.1 Summary Information

Large scale excavations of four block sites took place in 1988 under the direction of Bev Nicholson with Ian Kuijt as crew chief.

Block F consisted of four excavation units. The serials shown were established as follows, subsequent serials with the exception of 1988/1989 were used in further complete excavations.

Excavation	Original Code	Catalogue Code	Date
1988	1988/1989	1988/1989	Philip 16
1989	1989/1990	1989/1990	Thompson/Thompson
1990	1990/1991	1990/1991	See Lovstrom/16
1991	1991/1992	1991/1992	Philip 16

3.7.1.1_Sum.pdf

Read PDF

Download PDF