

S. J. McKee Archives



Original First Street Bridge

<http://archives.brandonu.ca/en/permalink/descriptions9148>

Part Of: RG 11 Lawrence Stuckey fonds

Description Level: Item

Series Number: 3.1

Item Number: 1-2002.3.1B1

Accession Number: 1-2002

GMD: graphic

Date Range: [188-?]

Physical Description: 3 1/2" x 5"

Material Details: Negative

History /

Biographical:

Built 1882 by Joseph E. Woodworth M.L.A. as a private enterprise toll bridge; See Barker pg. 3 [G. F. Barker, Brandon: City, 1881 - 1961. D.W. Friesen Printers: Altona, 1977 pp. 3 (P.E. 26/05/09).]

Custodial History:

For custodial history see the collection level description of the Lawrence Stuckey collection.

Scope and Content:

Original First Street Bridge

Notes: View from northeast across flat

Name Access: Original First Street Bridge

Subject Access: manmade geographic features
bridges

Brandon Original First-Street Bridge

Repro Restriction: The McKee Archives is the copyright holder for the Stuckey materials.

Storage Location: Lawrence Stuckey collection

Images





Original First Street Bridge

<http://archives.brandonu.ca/en/permalink/descriptions9150>

Part Of: RG 11 Lawrence Stuckey fonds

Creator: Martel

Description Level: Item

Series Number: 3.1

Item Number: 1-2002.3.1B3

Accession Number: 1-2002

GMD: graphic

Date Range: [ca. 1904]

Physical Description: 3 1/2" x 5"

Material Details: Negative

History /

Biographical:

Built 1882 by Joseph E. Woodworth M.L.A. as a private enterprise toll bridge; See Barker pg. 3 (G. F. Barker, Brandon: City, 1881 - 1961. D.W. Friesen Printers: Altona, 1977 pp. 3 [P.E. 26/05/09])

Custodial History:

For custodial history see the collection level description of the Lawrence Stuckey collection.

Scope and Content:

Original First Street Bridge

Notes: View from south bank about third street (about south end of the present dam); High water and leaves on trees indicate late May or early June.

Name Access: Original First Street Bridge

Subject Access: manmade geographic features

bridges

Brandon Original First-Street Bridge

Repro Restriction: The McKee Archives is the copyright holder for the Stuckey materials.

Storage Location: Lawrence Stuckey collection

Images





Original First Street Bridge

<http://archives.brandonu.ca/en/permalink/descriptions9151>

Part Of: RG 11 Lawrence Stuckey fonds

Description Level: Item

Series Number: 3.1

Item Number: 1-2002.3.1B4

Accession Number: 1-2002

GMD: graphic

Date Range: [19-?]

Physical Description: 3 1/2" x 5"

Material Details: Negative

History /

Biographical:

Built 1882 by Joseph E. Woodworth M.L.A. as a private enterprise toll bridge; See Barker pg. 3 [G. F. Barker, Brandon: City, 1881 - 1961. D.W. Friesen Printers: Altona, 1977 pp. 3 (P.E. 26/05/09).]

Custodial History:

For custodial history see the collection level description of the Lawrence Stuckey collection.

Scope and Content:

Original First Street Bridge

Notes: View from south bank, [east of bridge]; From postcard date-stamped 1908.

Name Access: Original First Street Bridge

Subject Access: manmade geographic features
bridges

Brandon Original First-Street Bridge

Repro Restriction: The McKee Archives is the copyright holder for the Stuckey materials.

Storage Location: Lawrence Stuckey collection

Images





Empire Brewing Co. (First Plant)

<http://archives.brandonu.ca/en/permalink/descriptions9688>

Part Of: RG 11 Lawrence Stuckey fonds

Description Level: Item

Series Number: 3.1

Item Number: 1-2002.3.1H22a

Accession Number: 1-2002

GMD: graphic

Date Range: [before 1900]

Physical Description: 3 1/2" x 5"

Material Details: Negative

Custodial History:

For custodial history see the collection level description of the Lawrence Stuckey collection.

Scope and Content:

Empire Brewing Company Ltd. (first plant)

Notes: [This negative was produced using a previously published image. P.E. 02/07/09]

Name Access: Empire Brewing Co.

Empire Brewery

Subject Access: businesses

breweries

brewing

alcoholic beverages

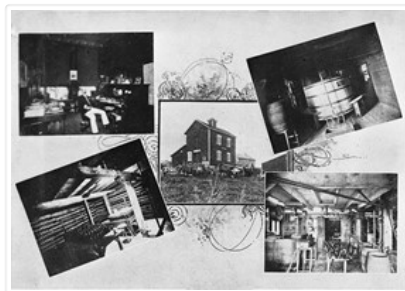
beer

Brandon Industries

Repro Restriction: The McKee Archives is the copyright holder for the Stuckey materials.

Storage Location: Lawrence Stuckey collection

Images



Logs Destined for Hanbury Manufacturing Co. - from 1st Street North

<http://archives.brandonu.ca/en/permalink/descriptions9665>

Part Of: RG 11 Lawrence Stuckey fonds



Description Level: Item
Series Number: 3.1
Item Number: 1-2002.3.1H9a
Accession Number: 1-2002
GMD: graphic
Date Range: 1910
Physical Description: 3 1/2" x 5"
Material Details: Negative

History /

Biographical:

Probably the peak of the sawmilling industry in Brandon was "The Big Drive" in 1910, when 125 drivers brought 5 million board feet of timber down the Assiniboine to Hanbury's Mill

Most of these logs were cut in the Riding Mountains in winter and floated down the Little Saskatchewan and Birdtail Rivers to the Assiniboine.

Custodial History:

For custodial history see the collection level description of the Lawrence Stuckey collection.

Scope and Content:

Logs, destined for Hanbury Manufacturing Co., in the Assiniboine River

Notes: View from First Street North
Courtesy of the family of E.C. Higgins (Mrs. Millen Dunbar nee May Higgins).
Also see file H9

Name Access: Hanbury Manufacturing Co.

Subject Access: manufactured products

mills

saw mills

forest products

logs

lumber

Brandon Industries

Repro Restriction: The McKee Archives is the copyright holder for the Stuckey materials.

Storage Location: Lawrence Stuckey collection

Images





Logs Destined for Hanbury Manufacturing Co. - looking north from 3rd Street

<http://archives.brandonu.ca/en/permalink/descriptions9664>

Part Of: RG 11 Lawrence Stuckey fonds

Description Level: Item

Series Number: 3.1

Item Number: 1-2002.3.1H9

Accession Number: 1-2002

GMD: graphic

Date Range: [ca. 1910]

Physical Description: 3 1/2" x 5"

Material Details: Negative

History /

Biographical:

Probably the peak of the sawmilling industry in Brandon was "The Big Drive" in 1910, when 125 drivers brought 5 million board feet of timber down the Assiniboine to Hanbury's Mill.

Most of these logs were cut in the Riding Mountains in winter and floated down the Little Saskatchewan and Birdtail Rivers to the Assiniboine.

Custodial History:

For custodial history see the collection level description of the Lawrence Stuckey collection.

Scope and Content:

Logs, destined for Hanbury Manufacturing Co., in the Assiniboine River

Notes: Looking north from 3rd Street.

[This negative was produced using a previously published image (P.E.).]

Also see file H9a

Name Access: Hanbury Manufacturing Co.

Subject Access: manufactured products

mills

saw mills

forest products

logs

lumber

Brandon Industries

Repro Restriction: The McKee Archives is the copyright holder for the Stuckey materials.

Storage Location: Lawrence Stuckey collection

Images





Cando Contracting Ltd.

<http://archives.brandonu.ca/en/permalink/descriptions13920>

Part Of: Fred McGuinness collection

Description Level: Item

Series Number: McG 9

Item Number: 20-2009.230

Accession Number: 20-2009

GMD: graphic

Date Range: c.1990

Physical Description: 5" x 3.5" (b/w)

History /

Biographical:

Cando Contracting Ltd. was found in 1978 by Gord Peters and Rick Hammond. The company began as a small rail line dismantling and salvage company operating out of Brandon, Manitoba. The company changed its name in 2013 to Cando Rail Services Ltd., which supplies railway support services (e.g., engineering and track services, industrial rail services, mechanical services, rail car storage, railway material sales, short line operations, transload services) to industry and the rail sector. The company maintains its headquarters in Brandon, Manitoba, and has regional offices located in Calgary, Edmonton, Winnipeg, Whitby, and Adel (Iowa). (Source: www.candoltd.com, accessed 05 Dec 2015)

Scope and Content:

Photograph shows Gord Peters standing in front of the rail car that forms the entrance of Cando Contracting Ltd. in Brandon, Manitoba

Notes: Negatives stored with photograph

Name Access: Cando Contracting Ltd

Gord Peters

Subject Access: contractors

Brandon business buildings & facilities after 1940

Brandon Industries

Storage Location: RG 5 photograph storage drawer 2 (hanging photos)

Arrangement:

From 20-2009 #4 plastic envelope #2; in Canada Wide Magazines Ltd. envelope post marked 03 November 1990

Images





Cutting Ice from the Assiniboine River

<http://archives.brandonu.ca/en/permalink/descriptions9668>

Part Of: RG 11 Lawrence Stuckey fonds
Creator: L.A. Stuckey
Description Level: Item
Series Number: 3.1
Item Number: 1-2002.3.1H12(1)
Accession Number: 1-2002
GMD: graphic
Date Range: January 21, 1942
Physical Description: 2 1/2" x 2 1/2"
Material Details: Negative

History /

Biographical:

These blocks of ice were used to fill the ice houses of the Wheat City Ice Co. (located north of Rosser Avenue on the west side of 15th Street, and south of Princess Avenue on the east side of 17th Street), the CPR icehouses (at the station and 3rd St. & Assiniboine Ave), and the CNR icehouse (at Forth Street and McTavish Avenue). In addition, large quantities of ice were shipped to smaller towns in railcars (usually old refrigerator cars).

Custodial History:

For custodial history see the collection level description of the Lawrence Stuckey collection.

Scope and Content:

Cutting ice from the Assiniboine River

Notes: This is one of five images that show the method in which ice is cut into blocks and loaded onto sleighs or trucks. Note the large draft horses still in use at this date.

[Mr. Stuckey put five negatives into the same envelope. We have separated them and numbered them H12(1) to H12(5).]

Additional information provided by the Fred McGuinness collection (20-2009).

Name Access: Cutting Ice from the Assiniboine River

Subject Access: ice

icehouses

Brandon Industries

Repro Restriction: The McKee Archives is the copyright holder for the Stuckey materials.

Storage Location: Lawrence Stuckey collection

Images



Cutting Ice from the Assiniboine River

<http://archives.brandonu.ca/en/permalink/descriptions9669>

Part Of: RG 11 Lawrence Stuckey fonds

Creator: L.A. Stuckey

Description Level: Item

Series Number: 3.1

Item Number: 1-2002.3.1H12(2)

Accession Number: 1-2002

GMD: graphic

Date Range: January 21, 1942

Physical Description: 2 1/2" x 2 1/2"

Material Details: Negative

History /

Biographical:

These blocks of ice were used to fill the ice houses of the Wheat City Ice Co. (located north of Rosser Avenue on the west side of 15th Street, and south of Princess Avenue on the east side of 17th Street), the CPR icehouses (at the station and 3rd St. & Assiniboine Ave), and the CNR icehouse (at Forth Street and McTavish Avenue). In addition, large quantities of ice were shipped to smaller towns in railcars (usually old refrigerator cars).

Custodial History:

For custodial history see the collection level description of the Lawrence Stuckey collection.

Scope and Content:

Cutting ice from the Assiniboine River

Notes: This is one of five images that show the method in which ice is cut into blocks and loaded onto sleighs or trucks. Note the large draft horses still in use at this date.

[Mr. Stuckey put five negatives into the same envelope. We have separated them and numbered them H12(1) to H12(5).]

Additional information provided by the Fred McGuinness collection (20-2009).

Name Access: Cutting Ice from the Assiniboine River

Subject Access: ice
icehouses
Brandon Industries

Repro Restriction: The McKee Archives is the copyright holder for the Stuckey materials.

Storage Location: Lawrence Stuckey collection

Images



Cutting Ice from the Assiniboine River

<http://archives.brandonu.ca/en/permalink/descriptions9670>

Part Of: RG 11 Lawrence Stuckey fonds

Creator: L.A. Stuckey

Description Level: Item

Series Number: 3.1

Item Number: 1-2002.3.1H12(3)

Accession Number: 1-2002

GMD: graphic

Date Range: January 21, 1942

Physical Description: 2 1/2" x 2 1/2"

Material Details: Negative

History /

Biographical:

These blocks of ice were used to fill the ice houses of the Wheat City Ice Co. (located north of Rosser Avenue on the west side of 15th Street, and south of Princess Avenue on the east side of 17th Street), the CPR icehouses (at the station and 3rd St. & Assiniboine Ave), and the CNR icehouse (at Forth Street and McTavish Avenue). In addition, large quantities of ice were shipped to smaller towns in railcars (usually old refrigerator cars).

Custodial History:

For custodial history see the collection level description of the Lawrence Stuckey collection.

Scope and Content:

Cutting ice from the Assiniboine River

Notes: This is one of five images that show the method in which ice is cut into blocks and loaded onto sleighs or trucks. Note the large draft horses still in use at this date.

[Mr. Stuckey put five negatives into the same envelope. We have separated them and numbered them H12(1) to H12(5).]

Additional information provided by the Fred McGuinness collection (20-2009).

Name Access: Cutting Ice from the Assiniboine River

Subject Access: ice
icehouses
Brandon Industries

Repro Restriction: The McKee Archives is the copyright holder for the Stuckey materials.

Storage Location: Lawrence Stuckey collection

Images



Cutting Ice from the Assiniboine River

<http://archives.brandonu.ca/en/permalink/descriptions9671>

Part Of: RG 11 Lawrence Stuckey fonds

Creator: L.A. Stuckey

Description Level: Item

Series Number: 3.1

Item Number: 1-2002.3.1H12(4)

Accession Number: 1-2002

GMD: graphic

Date Range: January 21, 1942

Physical Description: 2 1/2" x 2 1/2"

Material Details: Negative

History /

Biographical:

These blocks of ice were used to fill the ice houses of the Wheat City Ice Co. (located north of Rosser Avenue on the west side of 15th Street, and south of Princess Avenue on the east side of 17th Street), the CPR icehouses (at the station and 3rd St. & Assiniboine Ave), and the CNR icehouse (at Forth Street and McTavish Avenue). In addition, large quantities of ice were shipped to smaller towns in railcars (usually old refrigerator cars).

Custodial History:

For custodial history see the collection level description of the Lawrence Stuckey collection.

Scope and Content:

Cutting ice from the Assiniboine River

Notes:

This is one of five images that show the method in which ice is cut into blocks and loaded onto sleighs or trucks. Note the large draft horses still in use at this date.

[Mr. Stuckey put five negatives into the same envelope. We have separated them and numbered them H12(1) to H12(5).]

Additional information provided by the Fred McGuinness collection (20-2009).

Name Access:

Cutting Ice from the Assiniboine River

Subject Access:

ice

icehouses

Brandon Industries

Repro Restriction:

The McKee Archives is the copyright holder for the Stuckey materials.

Storage Location:

Lawrence Stuckey collection

Images



Cutting Ice from the Assiniboine River

<http://archives.brandonu.ca/en/permalink/descriptions9672>

Part Of:

RG 11 Lawrence Stuckey fonds

Creator:

L.A. Stuckey

Description Level:

Item

Series Number:

3.1

Item Number: 1-2002.3.1H12(5)
Accession Number: 1-2002
GMD: graphic
Date Range: January 21, 1942
Physical Description: 2 1/2" x 2 1/2"
Material Details: Negative

History /

Biographical:

These blocks of ice were used to fill the ice houses of the Wheat City Ice Co. (located north of Rosser Avenue on the west side of 15th Street, and south of Princess Avenue on the east side of 17th Street), the CPR icehouses (at the station and 3rd St. & Assiniboine Ave), and the CNR icehouse (at Forth Street and McTavish Avenue). In addition, large quantities of ice were shipped to smaller towns in railcars (usually old refrigerator cars).

Custodial History:

For custodial history see the collection level description of the Lawrence Stuckey collection.

Scope and Content:

Cutting ice from the Assiniboine River

Notes: This is one of five images that show the method in which ice is cut into blocks and loaded onto sleighs or trucks. Note the large draft horses still in use at this date.

[Mr. Stuckey put five negatives into the same envelope. We have separated them and numbered them H12(1) to H12(5).]

Additional information provided by the Fred McGuinness collection (20-2009).

Name Access: Cutting Ice from the Assiniboine River

Subject Access: ice
icehouses

Brandon Industries

Repro Restriction: The McKee Archives is the copyright holder for the Stuckey materials.

Storage Location: Lawrence Stuckey collection

Images





Spring Park Brick Pile

<http://archives.brandonu.ca/en/permalink/descriptions9673>

Part Of: RG 11 Lawrence Stuckey fonds

Creator: L.A. Stuckey

Description Level: Item

Series Number: 3.1

Item Number: 1-2002.3.1H13(1)

Accession Number: 1-2002

GMD: graphic

Date Range: September 22, 1974

Physical Description: 2 1/2" x 2 1/2"

Material Details: Negative

History /

Biographical:

As a boy my father pointed out this pile of bricks, and pit beside it, and told me a small brick plant had been established here in the early days. The product was of poor quality and the business never became established. LAS.

Custodial History:

For custodial history see the collection level description of the Lawrence Stuckey collection.

Scope and Content:

Spring Park brick pile near the CPR grade

Notes: Located just south of the CPR mainline at Mile 3 [three miles west of Brandon. P.E.]

[Mr. Stuckey put three negatives in same envelope. We have separated them and numbered them H13(1), H13(2) and H13(3).]

Name Access: Spring Park Brick Pile

Subject Access: sand

bricks

Brandon Industries

Repro Restriction: The McKee Archives is the copyright holder for the Stuckey materials.

Storage Location: Lawrence Stuckey collection

Images





Spring Park Brick Pile

<http://archives.brandonu.ca/en/permalink/descriptions9674>

Part Of: RG 11 Lawrence Stuckey fonds

Creator: L.A. Stuckey

Description Level: Item

Series Number: 3.1

Item Number: 1-2002.3.1H13(2)

Accession Number: 1-2002

GMD: graphic

Date Range: September 22, 1974

Physical Description: 2 1/2" x 2 1/2"

Material Details: Negative

History /

Biographical:

As a boy my father pointed out an old pile of bricks, and pit beside it, and told me a small brick plant had been established here in the early days. The product was of poor quality and the business never became established. LAS.

Custodial History:

For custodial history see the collection level description of the Lawrence Stuckey collection.

Scope and Content:

Area nearby the Spring Park brick pile

Notes: Located just south of the CPR mainline at Mile 3 [three miles west of Brandon. P.E.]

[Mr. Stuckey put three negatives in same envelope. We have separated them and numbered them H13(1), H13(2) and H13(3).]

Name Access: Spring Park Brick Pile

Subject Access: sand

bricks

Brandon Industries

Repro Restriction: The McKee Archives is the copyright holder for the Stuckey materials.

Storage Location: Lawrence Stuckey collection

Images





Spring Park Brick Pile

<http://archives.brandonu.ca/en/permalink/descriptions9675>

Part Of: RG 11 Lawrence Stuckey fonds

Creator: L.A. Stuckey

Description Level: Item

Series Number: 3.1

Item Number: 1-2002.3.1H13(3)

Accession Number: 1-2002

GMD: graphic

Date Range: September 22, 1974

Physical Description: 2 1/2" x 2 1/2"

Material Details: Negative

History /

Biographical:

As a boy my father pointed out an old pile of bricks, and pit beside it, and told me a small brick plant had been established here in the early days. The product was of poor quality and the business never became established. LAS.

Custodial History:

For custodial history see the collection level description of the Lawrence Stuckey collection.

Scope and Content:

Area nearby the Spring Park brick pile

Notes: Located just south of the CPR mainline at Mile 3 [three miles west of Brandon. P.E.]

[Mr. Stuckey put three negatives in same envelope. We have separated them and numbered them H13(1), H13(2) and H13(3).]

Name Access: Spring Park Brick Pile

Subject Access: sand

bricks

Brandon Industries

Repro Restriction: The McKee Archives is the copyright holder for the Stuckey materials.

Storage Location: Lawrence Stuckey collection

Images





McVicar Brick Plant

<http://archives.brandonu.ca/en/permalink/descriptions9682>

Part Of: RG 11 Lawrence Stuckey fonds

Description Level: Item

Series Number: 3.1

Item Number: 1-2002.3.1H18

Accession Number: 1-2002

GMD: graphic

Date Range: [189-]

Physical Description: 3 1/2" x 5"

Material Details: Negative

Custodial History:

For custodial history see the collection level description of the Lawrence Stuckey collection.

Scope and Content:

Dougald McVicar's Brick Plant

Notes: Located three miles south of Brandon

Photo courtesy of the Assiniboine Historical Society.

Name Access: McVicar Brick Plant

Subject Access: sand

bricks

Brandon Industries

Repro Restriction: The McKee Archives is the copyright holder for the Stuckey materials.

Storage Location: Lawrence Stuckey collection

Images





Imperial Oil Warehouse

<http://archives.brandonu.ca/en/permalink/descriptions9695>

Part Of: RG 11 Lawrence Stuckey fonds

Creator: L.A. Stuckey

Description Level: Item

Series Number: 3.1

Item Number: 1-2002.3.1HA5

Accession Number: 1-2002

GMD: graphic

Date Range: April 11, 1981

Physical Description: 2 1/2" x 2 1/2"

Material Details: Negative

History /

Biographical:

Built 1921

Custodial History:

For custodial history see the collection level description of the Lawrence Stuckey collection.

Scope and Content:

Imperial Oil Warehouse

Notes: Located on the east side of First Street, between Rosser and Pacific Avenues.

Name Access: Imperial Oil

Subject Access: businesses

warehouses

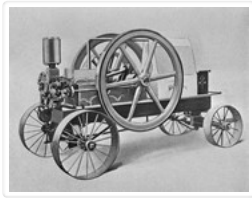
Brandon Industries

Repro Restriction: The McKee Archives is the copyright holder for the Stuckey materials.

Storage Location: Lawrence Stuckey collection

Images





Gas Engine

<http://archives.brandonu.ca/en/permalink/descriptions9659>

Part Of: RG 11 Lawrence Stuckey fonds

Description Level: Item

Series Number: 3.1

Item Number: 1-2002.3.1H6

Accession Number: 1-2002

GMD: graphic

Date Range: 1913

Physical Description: 3 1/2" x 5"

Material Details: Negative

Custodial History:

For custodial history see the collection level description of the Lawrence Stuckey collection.

Scope and Content:

Gas engine made in Brandon by Manitoba Engines Limited

Notes: [This negative was produced using a previously published image from "Brandon in the year 1913". P.E.]

Name Access: Gas Engine

Subject Access: manufactured products

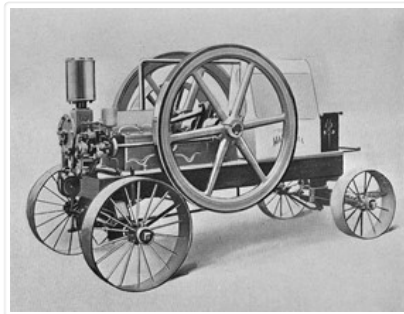
engines

Brandon Industries

Repro Restriction: The McKee Archives is the copyright holder for the Stuckey materials.

Storage Location: Lawrence Stuckey collection

Images





Wm. Fleming - Water Dealer

<http://archives.brandonu.ca/en/permalink/descriptions9681>

Part Of: RG 11 Lawrence Stuckey fonds

Description Level: Item

Series Number: 3.1

Item Number: 1-2002.3.1H17

Accession Number: 1-2002

GMD: graphic

Date Range: [192-]

Physical Description: 3 1/2" x 5"

Material Details: Negative

History /

Biographical:

William A. Fleming, Brandon's first water dealer, is said to have begun his business in 1881. He sold drinking water for 5 cents per pail from the 1920s through the mid 1930s. The source of his water was a well located on the east side of the 100 block of 12th Street. Fleming's business was taken over by two men with a water tank on a truck, and continued till 1946 when it was closed due to contamination.

Custodial History:

For custodial history see the collection level description of the Lawrence Stuckey collection.

Scope and Content:

Mr. Wm. Fleming, Water Dealer, with horse and water cart

Notes: Ad on cart: W.H. Mallett Jeweller Issuer of Marriage Licenses.

Photo courtesy of the Assiniboine Historical Society.

Name Access: Wm. Fleming - Water Dealer

Subject Access: water

water dealers

Brandon Industries

Repro Restriction: The McKee Archives is the copyright holder for the Stuckey materials.

Storage Location: Lawrence Stuckey collection

Images





Feed-Rite Mill

<http://archives.brandonu.ca/en/permalink/descriptions9683>

Part Of: RG 11 Lawrence Stuckey fonds

Creator: L.A. Stuckey

Description Level: Item

Series Number: 3.1

Item Number: 1-2002.3.1H19

Accession Number: 1-2002

GMD: graphic

Date Range: October 28, 1977

Physical Description: 2 1/2" x 2 1/2"

Material Details: Negative

Custodial History:

For custodial history see the collection level description of the Lawrence Stuckey collection.

Scope and Content:

Feed-Rite feed mill

Notes: Located near 17th Street East, on the CNR tracks

Name Access: Feed-Rite Mill

Subject Access: mills

feed mills

Brandon Industries

Repro Restriction: The McKee Archives is the copyright holder for the Stuckey materials.

Storage Location: Lawrence Stuckey collection

Images

