

S. J. McKee Archives



Bateman house - Baldur, MB

<http://archives.brandonu.ca/en/permalink/descriptions14410>

Part Of: James Wall collection
Description Level: Item
Series Number: Box 2
Item Number: 12-2004.17
Accession Number: 12-2004
GMD: graphic
Date Range: [1900-1904]
Physical Description: 4" x 3" (b/w)
Material Details: On matting (6" x 5")
Physical Condition: Some bright spots/discoloration along the top and right side of the photo
Custodial History:

See collection level description for the James Douglas Wall collection.

Scope and Content:

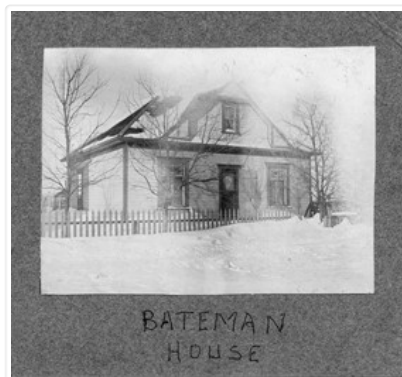
Image of the Bateman house, located in Baldur, MB, in winter.

Subject Access: rural images

winter

Storage Location: 2004 accessions

Images





Baldur, Manitoba

<http://archives.brandonu.ca/en/permalink/descriptions14394>

Part Of: James Wall collection

Description Level: Item

Series Number: Box 1

Item Number: 12-2004.1

Accession Number: 12-2004

GMD: graphic

Date Range: [1903]

Physical Description: 8" x 6" (b/w)

Material Details: On matting (12" x 10")

Physical Condition: good

Custodial History:

See collection level description for the James Douglas Wall collection.

Scope and Content:

Image shows a view of Baldur, MB with a body of water and train tracks in the foreground.

Notes: 12-2004.15 indicates the water was caused by spring flooding.

Subject Access: rural images

Location Copy: Same as 12-2004.15

Storage Location: 2004 accessions

Images





Methodist Church construction in Baldur, MB

<http://archives.brandonu.ca/en/permalink/descriptions14395>

Part Of: James Wall collection

Description Level: Item

Series Number: Box 1

Item Number: 12-2004.2

Accession Number: 12-2004

GMD: graphic

Date Range: [1900-1904]

Physical Description: 8" x 6" (b/w)

Material Details: On matting (12" x 10")

Physical Condition: good

Custodial History:

See collection level description for the James Douglas Wall collection.

Scope and Content:

Image of a group of people standing

Subject Access: rural images

Storage Location: 2004 accessions

Images





Methodist Church - Baldur, MB

<http://archives.brandonu.ca/en/permalink/descriptions14396>

Part Of: James Wall collection
Description Level: Item
Series Number: Box 2
Item Number: 12-2004.3
Accession Number: 12-2004
GMD: graphic
Date Range: October 17, 1904
Physical Description: 8" x 6" (b/w)
Material Details: On matting (12" x 10")
Physical Condition: Bright spot in lower lefthand corner

Custodial History:

See collection level description for the James Douglas Wall collection.

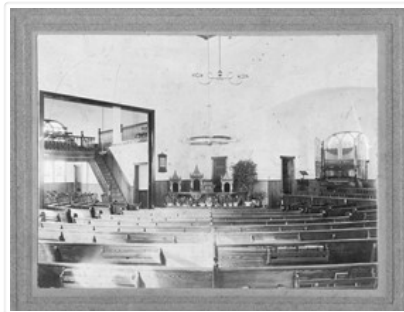
Scope and Content:

Image of the interior of the Methodist Church in Baldur, MB. The view is from the back of the church, looking over pews towards the pulpit.

Subject Access: rural images

Storage Location: 2004 accessions

Images





Manitoba threshers

<http://archives.brandonu.ca/en/permalink/descriptions14397>

Part Of: James Wall collection
Description Level: Item
Series Number: Box 2
Item Number: 12-2004.4
Accession Number: 12-2004
GMD: graphic
Date Range: [1900-1904]
Physical Description: 6.75" x 4.75" (b/w)
Material Details: On matting (9.75" x 7.75")
Physical Condition: good

Custodial History:

See collection level description for the James Douglas Wall collection.

Scope and Content:

Image of men in a field, likely a threshing crew, with work horses and farm machinery.

Subject Access: rural images

Storage Location: 2004 accessions

Images





Railway construction in Pembina Valley, MB

<http://archives.brandonu.ca/en/permalink/descriptions14398>

Part Of: James Wall collection

Description Level: Item

Series Number: Box 2

Item Number: 12-2004.5

Accession Number: 12-2004

GMD: graphic

Date Range: [1900-1904]

Physical Description: 6.75" x 4.75" (b/w)

Material Details: On matting (9" x 7")

Physical Condition: good

Custodial History:

See collection level description for the James Douglas Wall collection.

Scope and Content:

Image of horse drawn carts and men in a clearing during railway construction in the Pembina Valley. Trees and Lake Louise are in the background.

Subject Access: rural images

Storage Location: 2004 accessions

Images





Baldur, MB from south

<http://archives.brandonu.ca/en/permalink/descriptions14399>

Part Of: James Wall collection

Description Level: Item

Series Number: Box 2

Item Number: 12-2004.6

Accession Number: 12-2004

GMD: graphic

Date Range: 1903

Physical Description: 6.75" x 4.75" (b/w)

Material Details: On matting (9" x 7")

Physical Condition: good

Custodial History:

See collection level description for the James Douglas Wall collection.

Scope and Content:

Image of the town of Baldur, MB. Looking south a body of water is in the foreground.

Subject Access: rural images

Storage Location: 2004 accessions

Images





Baldur, MB

<http://archives.brandonu.ca/en/permalink/descriptions14400>

Part Of: James Wall collection

Description Level: Item

Series Number: Box 2

Item Number: 12-2004.7

Accession Number: 12-2004

GMD: graphic

Date Range: [1900-1904]

Physical Description: 5.6" x 4" (b/w)

Material Details: On matting (7.5" x 5.6")

Physical Condition: good

Custodial History:

See collection level description for the James Douglas Wall collection.

Scope and Content:

Image of the town of Baldur, MB. Visible is the L. Curtis Block. Canadian Northern rail cars are in the foreground with horse drawn carts and men working on road and town buildings behind.

Subject Access: rural images

Storage Location: 2004 accessions

Images





Curtis block - Baldur, MB

<http://archives.brandonu.ca/en/permalink/descriptions14401>

Part Of: James Wall collection

Description Level: Item

Series Number: Box 2

Item Number: 12-2004.8

Accession Number: 12-2004

GMD: graphic

Date Range: [1900-1904]

Physical Description: 5.6" x 4" (b/w)

Material Details: On matting (7.5" x 5.6")

Physical Condition: good

History /

Biographical:

The Curtis Block was built in 1900, possibly by Fred Stevens.

Custodial History:

See collection level description for the James Douglas Wall collection.

Scope and Content:

Image of the Curtis Block in Baldur, MB. The Victoria Hall, for public performances, was located on the upper floor. A group of men, one holding a hockey stick, and a dog are standing in front of the street entrance to the building.

Subject Access: rural images

Storage Location: 2004 accessions

Images





Fowler block - Baldur, MB

<http://archives.brandonu.ca/en/permalink/descriptions14402>

Part Of: James Wall collection
Description Level: Item
Series Number: Box 2
Item Number: 12-2004.9
Accession Number: 12-2004
GMD: graphic
Date Range: [1900-1904]
Physical Description: 5.5" x 4" (b/w)
Material Details: On matting (6.4" x 4.25")
Physical Condition: good

History /

Biographical:

The Fowler Block in Baldur, MB was built in 1899 by Alex Fowler.

Custodial History:

See collection level description for the James Douglas Wall collection.

Scope and Content:

Image of the Fowler Block in Baldur, MB. On the left is a shoe and harness shop owned and operated by the Fowlers from 1899-1978. On the right is J. Smith & Co. Merchants, a grocery and dry goods store. As of 2000, a grocery store still occupied the premises. Men are standing in front of the entrance to the two stores.

Subject Access: rural images

Storage Location: 2004 accessions

Images





Alex Fowler in his store - Baldur, MB

<http://archives.brandonu.ca/en/permalink/descriptions14403>

Part Of: James Wall collection
Description Level: Item
Series Number: Box 2
Item Number: 12-2004.10
Accession Number: 12-2004
GMD: graphic
Date Range: [1900-1904]
Physical Description: 5.5" x 4" (b/w)
Material Details: On matting (6.44" x 4.1")
Physical Condition: good

History /

Biographical:

The Fowler Block in Baldur, MB was built in 1899 by Alex Fowler.

Custodial History:

See collection level description for the James Douglas Wall collection.

Scope and Content:

Image of Alex Fowler standing at the counter in his store. The shelves behind him are stacked with tins of dry good, while the shelves to his side are stacked with china and glass items. The post office operated out of the back of the store.

Subject Access: rural images

Storage Location: 2004 accessions

Images





Cleghorn Pharmacy - Baldur, MB

<http://archives.brandonu.ca/en/permalink/descriptions14404>

Part Of: James Wall collection
Description Level: Item
Series Number: Box 2
Item Number: 12-2004.11
Accession Number: 12-2004
GMD: graphic
Date Range: [1900-1904]
Physical Description: 5.5" x 4" (b/w)
Material Details: On matting (6.44" x 4.1")
Physical Condition: Tiny piece of the photo is missing from the bottom edge and there are a few hairline cracks along the top of the photo

Custodial History:

See collection level description for the James Douglas Wall collection.

Scope and Content:

Image of three men standing in front of a building that appears to be Cleghorn's drug store.

Subject Access: rural images

Storage Location: 2004 accessions

Images





Front Street, west end of Baldur, MB

<http://archives.brandonu.ca/en/permalink/descriptions14405>

Part Of: James Wall collection

Description Level: Item

Series Number: Box 2

Item Number: 12-2004.12

Accession Number: 12-2004

GMD: graphic

Date Range: [1900-1904]

Physical Description: 6.6" x 4.75" (b/w)

Material Details: On matting (9" x 7")

Custodial History:

See collection level description for the James Douglas Wall collection.

Scope and Content:

Image of the west end of Front Street in Baldur, MB. Business and buildings in the photo include (L-R): Cleghorn's drug store, Fowlers, Tom Johnson's John Deer Shop, barber shop, Royal Bank (Odd Fellows Hall upstairs), Lee's Chinese Cafe, Hunters Hardware, Folwer Block, L. Curtis Block, Sexsmith Block - boarding house and sample room.

Subject Access: rural images

Storage Location: 2004 accessions

Images





Baldur, Manitoba - snow on the ground

<http://archives.brandonu.ca/en/permalink/descriptions14406>

Part Of: James Wall collection

Description Level: Item

Series Number: Box 1

Item Number: 12-2004.13

Accession Number: 12-2004

GMD: graphic

Date Range: September 13, 1903

Physical Description: 6.6" x 4.75" (b/w)

Material Details: On matting (9" x 7")

Custodial History:

See collection level description for the James Douglas Wall collection.

Scope and Content:

Image of Baldur, MB with a field in the foreground. The field has a light snow covering and stacks of hay. Baldur is in the background.

Subject Access: rural images

Storage Location: 2004 accessions

Images





Baldur, Manitoba from southwest

<http://archives.brandonu.ca/en/permalink/descriptions14407>

Part Of: James Wall collection

Description Level: Item

Series Number: Box 1

Item Number: 12-2004.14

Accession Number: 12-2004

GMD: graphic

Date Range: 1903

Physical Description: 6.6" x 4.75" (b/w)

Material Details: On matting (8.75" x 7")

Physical Condition: good

Custodial History:

See collection level description for the James Douglas Wall collection.

Scope and Content:

Image of Baldur, MB, including grain elevators.

Subject Access: rural images

Storage Location: 2004 accessions

Images





Baldur, Manitoba spring flood

<http://archives.brandonu.ca/en/permalink/descriptions14408>

Part Of: James Wall collection

Description Level: Item

Series Number: Box 1

Item Number: 12-2004.15

Accession Number: 12-2004

GMD: graphic

Date Range: 1903

Physical Description: 8" x 6" (b/w)

Material Details: On matting (12" x 10")

Physical Condition: good

Custodial History:

See collection level description for the James Douglas Wall collection.

Scope and Content:

Image of Baldur, MB, with a body of water, possibly from spring flooding, in the foreground.

Subject Access: rural images

Location Copy: Same as 12-2004.1

Storage Location: 2004 accessions

Images





Dr. L.M. Cleghorn's house - Baldur, MB

<http://archives.brandonu.ca/en/permalink/descriptions14409>

Part Of: James Wall collection

Description Level: Item

Series Number: Box 2

Item Number: 12-2004.16

Accession Number: 12-2004

GMD: graphic

Date Range: [1900-1904]

Physical Description: 5" x 4" (b/w)

Material Details: On matting (6" x 5.25")

Physical Condition: good

Custodial History:

See collection level description for the James Douglas Wall collection.

Scope and Content:

Image of two women and a child on the porch of Doctor Cleghorn's house in Baldur, MB.

Subject Access: rural images

Storage Location: 2004 accessions

Images





Mildred Bateman - Baldur, MB

<http://archives.brandonu.ca/en/permalink/descriptions14411>

Part Of: James Wall collection
Description Level: Item
Series Number: Box 2
Item Number: 12-2004.18
Accession Number: 12-2004
GMD: graphic
Date Range: [1900-1904]
Physical Description: 5.5" x 4" (b/w)
Material Details: On matting (6.4" x 4.25")
Physical Condition: good

History /

Biographical:

Mildred Bateman was born in 1897.

Custodial History:

See collection level description for the James Douglas Wall collection.

Scope and Content:

Image of Mildred Bateman in the front yard of Bateman house in Baldur, MB.

Subject Access: rural images

Storage Location: 2004 accessions

Images





Percy F. Curtis - Baldur, MB

<http://archives.brandonu.ca/en/permalink/descriptions14412>

Part Of: James Wall collection
Creator: Photographer: Steele & Co. Limited, Winnipeg & Calgary
Description Level: Item
Series Number: Box 2
Item Number: 12-2004.19
Accession Number: 12-2004
GMD: graphic
Date Range: [1900-1904]
Physical Description: 3.5" x 5.1" (b/w)
Material Details: On matting (5" x 7")
Physical Condition: Discoloration along the bottom of the photo
Custodial History:
See collection level description for the James Douglas Wall collection.
Scope and Content:
Studio portrait of a man identified as possibly Percy F. Curtis of Baldur, MB.
Subject Access: rural images
Storage Location: 2004 accessions

Images





Interior of Cleghorn Pharmacy - Baldur, MB

<http://archives.brandonu.ca/en/permalink/descriptions14413>

Part Of: James Wall collection
Description Level: Item
Series Number: Box 2
Item Number: 12-2004.21
Accession Number: 12-2004
GMD: graphic
Date Range: 1901
Physical Description: 6.5" x 4.9" (b/w)
Material Details: On matting (9.25" x 7.25")
Physical Condition: good
Custodial History:
See collection level description for the James Douglas Wall collection.
Scope and Content:
Image of two men standing in the interior of Cleghorn Pharmacy in Baldur, MB.
Subject Access: rural images
Storage Location: 2004 accessions

Images

