

S. J. McKee Archives



Alf Fowler collection

<http://archives.brandonu.ca/en/permalink/descriptions4794>

Part Of: RG 5 Western Manitoba Manuscript Collection
Creator: Davidson & Gowen
Description Level: Fonds
Accession Number: 6-1999
GMD: graphic
Date Range: 1912
Physical Description: 105 b/w photographs

History /

Biographical:

Alfred Fowler was born in 1903, in Toronto, Ontario. At the age of 23 he began working for Canadian National Railways (C.N.R.) in the company's telegraph accounting department. He remained employed there for 45 years, with the exception of the years 1940-45 when he served with the Royal Canadian Artillery during World War II. During his service he was stationed at Shilo, Manitoba, where he met his future wife, Elsie Bowen. They were married late in 1944, and in 1945 returned to Toronto. Fowler remained in Toronto until his death in 1969. Throughout his life, Mr. Fowler was an ardent amateur photographer.

Custodial History:

All 105 prints in this collection were created by Davidson & Gowen, a photography business located in Brandon. It seems likely that they were created for display and/or for commercial sale as part of the November 7, 1912 "Harvest" edition of The Brandon Sun. Alfred Fowler acquired a copy of the Davidson and Gowen prints during his stay at C.F.B. Shilo during the Second World War. In 1946 Alfred Fowler left Brandon returning to his home in Toronto. With the death of Alfred in 1969 the collection passed to his wife, Elsie Fowler. Elsie died in 1987, also in Toronto. Her estate passed to her nephew, Byron Forsyth, a Brandon resident. Byron brought the collection back to Brandon and in 1999 donated it to the McKee Archives.

Scope and Content:

The prints concern various subjects in Brandon, Manitoba c. 1911-1912 including Brandon residences, store fronts/businesses, streetscapes, churches, the Brandon Fair, parks, hotels, institutional structures (ie hospitals, City Hall) and rail yards (both Canadian Northern and Canadian Pacific) in the city. These images provide a visual record of Brandon in the years just before the Great War.

Notes: CAIN No. 202647. All addresses listed for photographs in the Fowler collection were derived from Henderson's Directories (1911, 1913).
Location Copy: Copies of the photographs are in the green binder on the reference shelf in the reading room. Negatives for CPR photographs have been placed with 6-1999.10 (CPR Railway depot).
Storage Location: RG 5 photograph storage drawer.



Herbert Goodland collection

<http://archives.brandonu.ca/en/permalink/descriptions12709>

Part Of: RG 5 Western Manitoba Manuscript Collection

Description Level: Collection

Accession Number: 17-2011

GMD: graphic

Date Range: 1913-1915

Physical Description: 32 b/w photographs

History /

Biographical:

Herbert (Bert) Goodland was born in Birkenhead, England in 1877 and moved to Canada with his parents James and Hannah in the late 1800's. James Goodland died in 1920 and is buried in Brandon, MB.

In 1900, Bert Goodland became Farm Manager at the Brandon Indian Residential School. He also taught Agriculture; a position he held until 1922. Goodland married Marjory Broughton in 1903, and they had one daughter, Dorothy, in 1908.

In 1922, the family moved to Alberta, where Goodland took on a similar job at an Indian Residential School near Edmonton. After his retirement in the 1940's, he and Marjory moved to Chilliwack, BC, where Marjory died in 1955. Herbert Goodland's last years were spent in Ontario and he died there in 1970.

Custodial History:

Photographs were created/collected by Herbert Goodland during the period he taught at the Brandon Indian Residential School. The photographs passed from Goodland's wife Marjory to their daughter Dorothy and then to Dorothy's daughter Doreen Oke. Oke donated them to the McKee Archives in November 2011.

Scope and Content:

Collection consists of 32 b/w photographs (some loose, some as part of album pages) of the Brandon Indian Residential School. Subjects include school grounds, buildings and students. There are also a few photographs of Brandon and one reproduced image of the Goodland family.

Notes: History/Bio provided by Doreen Oke. Description by Christy Henry.

Subject Access: residential schools
Indigenous Peoples
assimilation
colonialism



Lloyd Peterson

<http://archives.brandonu.ca/en/permalink/descriptions8817>

Part Of: Brandon Folk, Music & Art Society, Inc.

Description Level: Item

Fonds Number: 17-2008

Item Number: 17-2008.18

Accession Number: 17-2008

GMD: graphic

Physical Description: 3.5" x 5" (colour)

Scope and Content:

Photograph shows Lloyd Peterson of Winnipeg band The Cheer, onstage; probably 1987 festival.

Storage Range: RG 5 photograph storage drawer



A. Lloyd Dulmage

<http://archives.brandonu.ca/en/permalink/descriptions2194>

Part Of: Brandon University Photograph Collection

Description Level: Item

Series Number: 8

Item Number: 8.D.23

GMD: graphic

Date Range: c. 1975

Physical Description: 5" x 7" (b/w)

Scope and Content:

Portrait of Lloyd Dulmage, Brandon University president.



A. Lloyd Dulmage

<http://archives.bradonu.ca/en/permalink/descriptions2196>

Part Of: Brandon University Photograph Collection
Description Level: Item
Series Number: 8
Item Number: 8.D.24
GMD: graphic
Date Range: c. 1972
Physical Description: 3.75" x 6.25" (b/w)
Scope and Content:
Portrait of Lloyd Dulmage.



A. Lloyd Dulmage

<http://archives.bradonu.ca/en/permalink/descriptions2197>

Part Of: Brandon University Photograph Collection
Description Level: Item
Series Number: 8
Item Number: 8.D.28
GMD: graphic
Date Range: c. 1975
Physical Description: 8" x 10" (b/w)
Scope and Content:
Portrait of Lloyd Dulmage.



A. Lloyd Dulmage

<http://archives.bradonu.ca/en/permalink/descriptions2199>

Part Of: Brandon University Photograph Collection
Description Level: Item
Series Number: 8
Item Number: 8.D.27
GMD: graphic
Date Range: c. 1972
Physical Description: 8" x 10" (b/w)
Scope and Content:
Portrait of Lloyd Dulmage.



Lloyd Henderson

<http://archives.brandonu.ca/en/permalink/descriptions2277>

Part Of: Brandon University Photograph Collection

Description Level: Item

Series Number: 8

Item Number: 8.H.13

GMD: graphic

Date Range: 1949

Physical Description: 2.5" x 4" (b/w)

Physical Condition: There are areas of discoloration on the photograph, possibly as a result of the photo being glued to a piece of cardboard.

Scope and Content:

Graduation portrait Albert Lloyd Henderson, class of 1949.



Brandon University photograph collection

<http://archives.brandonu.ca/en/permalink/descriptions1>

Part Of: Brandon University Photograph Collection

Description Level: Collection

GMD: graphic

Date Range: 1900-present

Physical Description: See series level for extent

History /

Biographical:

The Brandon University Photograph collection is an artificially created collection. It includes photographs from both Brandon College and Brandon University.

Custodial History:

The custodial history is varied. Some photographs were created by officers of the College and the University, or were produced at the request of the institution. Many, as well, have been donated by former faculty members and students. We have tried to record the custodial history for photographs that have been donated by faculty members and students at the item level.

Scope and Content:

Fonds has been divided into eleven series, including: (1) Convocation, Scholarships and Awards; (2) Campus Buildings; (3) Library Activities and Archives; (4) Faculties and Schools; (5) Student Activities; (6) Administrative and Support Units; (7) Sports; (8) Portraits; (9) Oversize; (10) Special Events; and (11) Documents, Diplomas and Certificates.

Name Access: S.J. McKee Archives

Subject Access: photographs

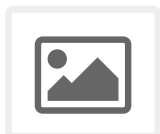
Accruals: Further accruals expected.

Repro Restriction: Copyright provisions apply as per the current Copyright Act.

Storage Range: Photograph storage drawers and oversize storage

Arrangement:

This collection is currently being re-numbered and re-housed. As a result there are two different arrangements.



Lawrence Stuckey slide collection

<http://archives.brandonu.ca/en/permalink/descriptions9512>

Part Of: RG 11 Lawrence Stuckey fonds

Description Level: Series

Series Number: 2

Accession Number: 1-2002

GMD: graphic

Date Range: 1954-1982

Physical Description: approximately 3838 colour slides

History /

Biographical:

For history/bio information see the collection level description of the Lawrence Stuckey collection.

Custodial History:

For custodial history see the collection level description of the Lawrence Stuckey collection.

Scope and Content:

Series consists of slides created from photographs taken by Lawrence Stuckey during his travels throughout Manitoba, other parts of Canada and the United States. Although Lawrence and his wife Mavis travelled for pleasure, their destinations were often chosen deliberately to enable Lawrence to explore and photograph specific landscapes, flora and fauna.

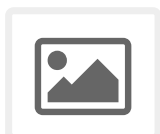
Name Access:

- Glendenning
- Assiniboine River
- Souris River
- Sidney
- Manitoba
- Whiteshell
- Carberry Hills
- Baldhead Hills
- Sprucewoods
- Duck Mountains
- Rosssburn
- Thompson
- Kelsey Trail
- E.T. Seton Park
- Steeprock Bay
- Steeprock River
- Flin Flon
- Rocky Lake
- Lake Winnipegosis
- Turtle Mountains
- Riding Mountain National Park
- Moon Lake
- Lake Katherine
- Clear Lake
- Arrowhead Trail
- B&B Trail
- Ominik Trail
- Gorge Creek
- Scarborough
- Ontario
- Edwards Gardens
- Royal Botanical Gardens
- Prince Albert
- Saskatoon
- Lake Madge
- Winnipeg
- Saskatchewan
- International Peace Gardens
- South Dakota

Black Hills
North Dakota
Quebec
Kenora
Qu'Appelle Valley
Theodore Roosevelt National Monument
Toronto
Point Pelee
Port Dover
Windsor
Yellowstone National Park
Wyoming
Ottawa
Scotsbluff
Nebraska
Mt. Evans Road
Colorado
Berthoud Pass
Milner Pass
Dinosaur Park
Trail Ridge
Rollins Pass
Grand Teton
Beartooth Pass
Craters of the Moon
Idaho
Medicine Bow National Fort
Michigan
Wisconsin
Quebec City
Mont. Tremblant Park
Sugar Camp
Satine-Anne-de-Bellevue Canal
Montreal
Banff National Park
Larch Valley
Sentinel Pass
Lake Louise
Moraine Lake
Athabaska River
Plain of Six
Columbia Icefields
Bow River
Victoria Glacier
Yoho Pass

Yoho National Park
Wapta Falls
Hoodoo Park
Waterfall Valley
Highline Trail
Burgess Pass
Takakaw Falls
Kicking Horse
Skyline Trail
Waterton Lakes National Park
Emerald Lake
Yoho Valley
Twin Falls Creek
Trans Canada Highway

Subject Access:	geographic features
	manmade geographic features
	natural geographic features
	political geographic features
	natural phenomena
	natural waterways
	bridges
	canals
	mines
	roads
	trails
	monuments
	historical markers
	lakes
	mountains
	national parks
	parks
	hills
	valleys
	Rivers
	cities
	towns
	landscapes
	creeks
	gardens
	Plants
	trees
	badlands
	glaciers
	icefields
	hoodoos
	waterfalls
	beaches
	forests
Accruals:	Additional slides of flora and fauna taken by Stuckey during his travels are housed in the McKee Archives. Those slides are unprocessed at present.
Repro Restriction:	The McKee Archives is the copyright holder for the Stuckey materials.
Storage Location:	Lawrence Stuckey collection



Lawrence Stuckey photograph collection

<http://archives.brandonu.ca/en/permalink/descriptions4796>

Part Of: RG 11 Lawrence Stuckey fonds

Description Level: Series
Series Number: 3
Accession Number: 1-2002
GMD: graphic
Date Range: ca. 1885 to 1991; predominantly 1960-1991
Physical Description: c. 2700 photograph negatives;
c. 100 b/w prints

History /

Biographical:

For history/bio information see the fonds level description of the Lawrence Stuckey collection.

Custodial History:

The entire collection was housed in Mr. Stuckey's residence at 658 11th St. Brandon, Manitoba, prior to its transfer to the McKee Archives. The balance of the materials, including the photograph negative collection, was deposited in the Archives following Mr. Stuckey's death. Some of the negatives came into Mr. Stuckey's possession when he acquired the Clark J. Smith Studio, Brandon, Man.

Scope and Content:

Created by Lawrence A. Stuckey, the collection includes some of his own photography. Stuckey took many of the photos during his travels in Southwestern Manitoba and further afield. As well, he acquired copies of negatives that fit his interest from friends, contemporaries, and other professional photographers. The majority of these copies are of photographs that predate Stuckey's era.

The collection includes various subjects from Brandon's history (including people, buildings, transportation, railways, and institutions) 1879 to 1992; surrounding communities, railway lines and trains 1925 to 1989; agriculture ca. 1890 to 1983; railway photographs including the Prairie Dog Central, grain cars and various railways, including Canadian Pacific, Canadian National, Great Northern, and Brandon, Saskatchewan & Hudson's Bay, ca. 1900 to 1992; vehicles, planes, and ships ca. 1940 to 1981; personal photographs including friends, travel and other personal interests.

The series has been divided into nine sub-series, including: (1) Brandon history; (2) Westbran project parks; (3) Rural archives; (4) History - miscellaneous (including Walker collection); (5) Grain cars; (6) The prairie dog; (7) Personal interests; (8) Lawrence Stuckey; and (9) Unsorted.

Notes: Funding for series three level descriptions and digitizing of the Lawrence Stuckey fonds has been provided courtesy of a generous grant from the Heritage Grants Advisory Council of the Manitoba Government 2009.

Repro Restriction: The McKee Archives is the copyright holder for the Stuckey materials.

Finding Aid: A copy of the photograph inventory is in the blue binder on the reference shelf in the reading room.

Storage Location: Lawrence Stuckey collection

Arrangement:

Subseries 1 - Brandon History

- A. People
- B. Bridges
- C. Streets
- D. Buildings
- E. Business
- F. Fire Dept.
- G. Hospitals
- H. Industries
- I. Structures

- I. Streetcars
- J. Utilities
- K. Construction
- L. Transportation (other than rail)
- M. Exhibition
- N. Misc. History
- O. Environs
- P. Railroads

Subseries 2 - Westbran Project Parks

Subseries 3 - Rural Archives

1. CPR

- North branches
- Broadview Sub. (Brandon-Broadview)
- CPR lines south of mainline
- Carberry Sub. (Winnipeg-Brandon)
- Minnedosa & Bredenbury Sub's (Ex. Man. & N.W. Ry.) (Portage la Prairie-Minnedosa-Bredenbury)

2. CNR

- Mainline, Rivers Sub. (Winnipeg-Melville)
- Gladstone Sub. (Portage-Neepawa)
- Wawanesa Sub. (Brandon [M&B Jct]-Belmont)
- Rapid City Sub. (Hallboro-Beulah)
- Rossburn Sub. (Neepawa-Russell)

3. Surrounding Communities

- Brandon NW
- Brandon NE
- Brandon SW
- Brandon SE

4. Agriculture (Steam)

5. Agriculture (Horse & Misc)

6. Agriculture (Miscellaneous)

Subseries 4 - History - Miscellaneous (inc. Walker Collection)

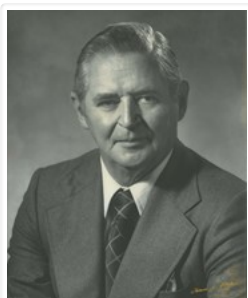
Subseries 5 - Grain Cars

Subseries 6 - The Prairie Dog

Subseries 7 - Personal Interests

Subseries 8 - Lawrence Stuckey

- Friends & Personal 1975-
- Travel
- Cars & Planes
- Ships
- Ships & Boats
- Great Lakes Seaway
- Ships & Canal, Duluth, Minn. Sept. 1980
- Windsor & Toronto 1980, 1981
- Welland Canal 1981



Andrew Lloyd Dulmage

<http://archives.brandonu.ca/en/permalink/descriptions2575>

Part Of: Brandon University Photograph Collection

Creator: Photographer: Terence J. Fowler

Description Level: Item

Series Number: 9

Item Number: BUPC 9.26

GMD: graphic

Date Range: c. 1970

Physical Description: 11" x 14" (b/w)

Scope and Content:

Portrait of Andrew Lloyd Dulmage, President of Brandon University from 1970 to 1977.

Name Access: Andrew Lloyd Dulmage

Dulmage

Subject Access: president

Portrait

Storage Range: Oversize drawer 4

Images



William Ridley Sheridan Wade collection

<http://archives.brandonu.ca/en/permalink/descriptions5731>

Part Of: RG 5 Western Manitoba Manuscript Collection

Description Level: Collection

Accession Number: 28-2007

GMD: graphic

Date Range: 1902-1951
Physical Description: 20 photographs (b/w)
Physical Condition: A couple of the photographs have tears or ink marks on them. Six of the photographs are on matting.

History /

Biographical:

W. Wade and Sons Lumber was originally established in Ninga, Manitoba c. 1902. The business and the family, who had been homesteading since 1885 (first near Deloraine where they also owned a lumber yard from 1887-1889, and then on a farm at Rhodes near Ninga), moved to Brandon in 1909. Wade and Sons was founded by William Unwin Wade, who operated it until his death in 1924; his sons James and William were made partners prior to his death and continued to run Wade and Sons after Unwin's death. The firm was incorporated in 1926 as Wade and Sons Limited. James Wade died in November 1951. William Wade sold the business to The North American Lumber and Supply Company Ltd. c. 1952. The sale included: the home yard office at 117 14th Street, Brandon; a sash and door factory of brick and tile; a warehouse on a 75 by 120 foot lot by the Canadian Pacific railway tracks; and an open lumber piling yard on a 50 by 120 foot lot.

Custodial History:

The photographs were in the possession of William Ridley Sheridan Wade, grandson of Unwin Wade since the 1950s. Following his death in July 2004, the photographs became the possession of his widow, Marion Wade. She donated the photographs to the McKee Archives in April 2007.

Scope and Content:

Fonds consists of black and white photographs, various sizes, of the W. Wade and Sons Lumber business, including buildings, trucks and employees. It also includes photos of members of the Wade family.

Photographs include:

1. W. Wade and Sons Lumber, Ninga, MB (1902) - 5.5" x 3.75" on matting - exterior of the office, with lumber storage in the background. Unwin Wade standing in front of the office on the right. The other man is unidentified.
2. Ninga, MB (1902) - 5.5" x 4" on matting - view of Main Street. Grain elevator(s?) on the right. Various businesses on the left. There are a number of carts, wagons etc. parked along the street.
3. Wade family at Rodes Siding, MB, family home near Ninga (c. 1902) - 5.75" x 4.5" on matting - various family members standing outside their home during winter.
4. Wade family portrait (n/d) - 5.5" x 4" on matting - Back L to R: Pearl, Ada, James, William; Middle L to R: William Unwin Wade, Eva, Elizabeth (nee Bawkes) Wade; Front: Hazel.
5. W. Wade & Sons Lumber, Brandon, MB (c. 1909) - 6" x 4" on matting - exterior of the office on the rights. Stored lumber and a horse drawn cart on the right. There are three men in the photograph. On the far left is Unwin Wade, in the middle is either James or Will Wade. The man on the right is unidentified. Photograph by J.W. Wilson and Co., Toronto.. There is a thumbprint in the upper right corner of the photograph.
6. W. Wade & Sons Lumber, Brandon, MB (1909) - 7" x 5" on matting - interior of the office. Unwin Wade behind the counter on the right. James Wade standing beside the door on the left. There are a variety of papers, calendars and ads on the walls and desk. There is a large tear in the upper left of the photograph.
7. Wade & Sons Limited Builders Supplies. Brandon MB (1951) - 6" x 4" - Staff portrait

11. Wade & Sons Limited, Builders Supplies, Brandon, MB (1951) - 6" x 4" - Sun portrait outside the office on 14th Street. Second from the left is Sherry Wade, James' son. Ninth from the left is James Wade. On the far right is Murray Wade. Third from the right is Jack Patton, who ran the factory (they made windows).

8. Wade & Sons Limited, Builders Supplies, Brandon, MB (1951) - 6" x 4" - Three Wade & Sons trucks parked in front of the office on 14th Street. The men in the photograph are unidentified.

9. Wade & Sons Limited, Builders Supplies, Brandon, MB (1951) - 6" x 4" - Photo is looking down 14th Street, showing the Wade & Sons office and outbuildings. The same three trucks from 28-2007.8 appear in this photograph.

10. Men with vehicles (1926) - 4.25" x 2" - Outside Wade & Sons, photograph shows five men posed alongside Wade & Sons vehicles. The man on the far right is James Wade. The man on the far left is Will Wade. He is standing beside Albert Petit(?).

11. Wade & Sons Limited truck (1930) - 4.5" x 2.5" - Photo taken from the front of the truck, parked on Pacific Avenue, looking east. The truck carried lumber on its sides.

12. Wade & Sons, Limited truck (1930) - 4.5" x 2.5" - The truck in the photo is the same as the one in 28-2007.11, only this photo shows the side of the truck, including the Wade & Sons, Limited stencil on the side of the truck.

13. Wade & Sons, Limited truck (n/d) - 4.25" x 2.75" - Unidentified man stands beside an empty Wade & Sons lumber truck. The truck is parked on a residential street.

14. Wade & Sons, Limited truck (n/d) - 4.5" x 2.5" - Photo shows a man standing beside a Wade & Sons Limited truck. The truck bed appears to be full of shingles. A woman is sitting in the passenger seat.

15. East side of 14th Street (n/d) - 2.5" x 4.5" - Photo was taken from the back of a Wade & Sons truck and shows the east side of 14th Street looking northeast. It includes the corner of the Wade & Sons office (far left) and one of the outbuildings, possible during construction.

16. Overland car (c.1919) - 2.5" x 4.25" - Photo shows what is likely an Overland (with bald tires) parked on a residential street. Most of the hood and all of the passenger side are visible.

17. Wade family portrait (1927) - 4.5" x 2.5" - Includes Will and James Wade's families. Second from the left is Will Wade. Third from the left is James Wade. Fifth, sixth and seventh from the left are James Wade's children: Ruth, Gwen and Sheridan.

18. First Baptist Church choir (n/d) - 4.5" x 2.5" - Photo was taken from the balcony of the First Baptist Church on Lorne Avenue, Brandon, MB. It shows the choir in the choir loft (baptismal pool in the back centre), the minister at the pulpit and the organist.

19. Portrait outside the First Baptist Church (n/d) - 4.5" x 2.5" - L to R: Charles Stone, Baptist minister, ?, James Wade, ?.

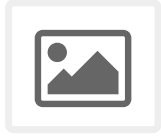
20. Portrait outside the First Baptist Church (n/d) - 4.5" x 2.5" - L to R: ?, Charles Stone, ?, ?, James Wade, ?.

Notes:

History/Bio information was supplied by Marion Wade. Brandon Sun articles and William Ridley Sheriden Wade's obituary were also used.
Description by Christy Henry.

Storage Location: RG 5 Western Manitoba Manuscript Collection - photograph storage drawer

Storage Range: RG 5 Western Manitoba Manuscript Collection - photograph storage drawer



Joseph H. Hughes collection - photographs

<http://archives.brandonu.ca/en/permalink/descriptions8344>

Part Of: Joseph H. Hughes collection

Description Level: Series

Series Number: 3-1997.1

Accession Number: 3-1997

GMD: graphic

Date Range: 1886-1960

Physical Description: 84 photographs

Scope and Content:

Accession 3-1997 (84 photographs, various diplomas; 1886-1960) contains a variety of photographs of buildings and streetscapes of the 100 block of Tenth Street and various Hughes properties in the city. In addition, there are photographs of the "Founders of Hughes and Co," a parade on Tenth Street in 1924, the Wheat City Business College Hockey Team 1912, three photographs of the Port of Churchill in 1931, three photographs of threshing crews on Hughes and Company property, a Great War military contingent from Brandon including JRC Evans, and four family photographs.

Notes: Initial processing Jessica Taylor (winter 2007).

Storage Location: RG 5 photograph storage drawer and oversize

Storage Range: RG 5 photograph storage drawer and oversize



Lawrence Stuckey photograph collection - Brandon history

<http://archives.brandonu.ca/en/permalink/descriptions9030>

Part Of: RG 11 Lawrence Stuckey fonds

Creator: Many of the images presented were captured by Mr. Stuckey himself. However being a well known and accomplished photographer and amateur historian, he also bought, sold and traded negatives with other collectors. Therefore the viewer is reminded that many images, although part of his collection, were created and/or provided for Mr. Stuckey by other collectors. In addition, it is believed that some images contained within his collection were created by photographing a pre-existing negative or print. We have attempted to note the authorship of all images when possible.

Description Level: Sub-series

Series Number: 3.1

Accession Number: 1-2002

GMD: graphic

History /

Biographical:

For history/bio information see the collection level description of the Lawrence Stuckey collection.

Custodial History:

For custodial history see the collection level description of the Lawrence Stuckey collection.

Scope and Content:

This sub-series consists of photographic negatives related to the history of Brandon, Manitoba.

All of the images contained within this sub-series were part of Mr. Stuckey's lifelong personal collection of photographic negatives and prints. Images include those related to people, street scenes, buildings, various city departments and so forth.

Notes:

All of the images from Mr. Stuckey's collection of negatives and prints were reproduced and digitized using an Epson scanner and software suite. All attempts have been made to reproduce the images in such a manner that balances our desire to portray the negatives and photographs as they originally appear, with the need to create an optimal digital image for viewing. Therefore it is noted that minor alterations to image size and contrast have occurred.

With few exceptions, all digitizing and database entry of images and descriptions was conducted during the summer of 2009 at Brandon University by Patrick Elves.

Repro Restriction:

The McKee Archives is the copyright holder for the Stuckey materials.

Storage Location:

Lawrence Stuckey collection

Arrangement:

Unless otherwise noted, the arrangement of these images was drawn from the original classification scheme used by Mr. Stuckey.

The information specific to each image, for the most part, was gained from Mr. Stuckey's personal notes regarding that particular photograph or similar photograph. Observations or notes contained within square brackets are explanatory or missing materials that have been added by someone other than Mr. Stuckey.

We have attempted to present the information that accompanies each image in the same format as was used by Mr. Stuckey himself.

Subseries 1 - Brandon History

- A. People
- B. Bridges
- C. Streets
- D. Buildings
- E. Business
- F. Fire Dept.
- G. Hospitals
- H. Industries
- I. Streetcars
- J. Utilities
- K. Construction
- L. Transportation (other than rail)
- M. Exhibition
- N. Misc. History
- O. Environs
- P. Railroads



Lawrence Stuckey photograph collection - unsorted materials

<http://archives.brandonu.ca/en/permalink/descriptions8622>

Part Of: RG 11 Lawrence Stuckey fonds

Creator: Clark J. Smith
Lawrence Stuckey

Description Level: Sub-series

Series Number: 3.9

Accession Number: 1-2002

GMD: graphic

History /

Biographical:

Stuckey left a variety of materials in his collection in an unsorted state. Rather than allocate those materials to one of the existing sub-series, the McKee Archives chose to artificially create this sub-series, which has been designated "unsorted materials."

For history/bio information for Lawrence Stuckey see the collection level description of the Lawrence Stuckey collection.

Custodial History:

For custodial history see the collection level description of the Lawrence Stuckey collection.

Scope and Content:

Sub-series consists of photographic prints, photograph albums, postcards and negatives covering a variety of subjects including Brandon, ships, boats, threshermens' reunions, and rural Manitoba. Some of the prints correspond with negatives held in other sub-series in the Stuckey collection. If possible, the connection between the print and negative has been made at the item level. Some of the items are original and quite rare.

The dates given for many of the prints in this sub-series refer to the date the photograph was taken and not the date the print was made from the original negative.

Notes: Unidentifiable photographs not taken by Lawrence Stuckey and redundant prints were culled.

Repro Restriction: The McKee Archives is the copyright holder for the Stuckey materials.

Storage Location: Lawrence Stuckey collection



Edward Perry

<http://archives.brandonu.ca/en/permalink/descriptions2383>

Part Of: Brandon University Photograph Collection

Creator: Photographer: Jerrett's

Description Level: Item

Series Number: 8

Item Number: 8.P.17

GMD: graphic

Date Range: 1949

Physical Description: 3" x 4.25" (b/w)

History /

Biographical:

Perry taught in the English Department from 1945-1966.

Scope and Content:

Portrait of Edward Perry.



Edward A. Whitcombe

<http://archives.brandonu.ca/en/permalink/descriptions2488>

Part Of: Brandon University Photograph Collection

Description Level: Item

Series Number: 8

Item Number: 8.W.8

GMD: graphic

Date Range: 1962

Physical Description: 2.75" x 3.75" (b/w)

History /

Biographical:

Whitcombe won the E. Fotheringham Memorial Scholarship in Political Science.

Scope and Content:

Portrait of Edward Whitcombe, class of 1964.



Prince edward hotel

<http://archives.brandonu.ca/en/permalink/descriptions8766>

Part Of: RG 11 Lawrence Stuckey fonds

Creator: Lawrence Stuckey

Description Level: Item

Series Number: 3.9

Item Number: 1-2002.3.9.133 to 1-2002.3.9.141

Accession Number: 1-2002

GMD: graphic

Date Range: c. 1979

Physical Description: 5" x 7" (b/w)

Scope and Content:

Nine photographs, taken from various angles, of the Prince Edward Hotel. The photographs were taken after the hotel had closed.

Repro Restriction: The McKee Archives is the copyright holder for the Stuckey materials.

Storage Location: RG 5 photograph storage drawer



King Edward Hotel

<http://archives.brandonu.ca/en/permalink/descriptions9401>

Part Of: RG 11 Lawrence Stuckey fonds

Description Level: Item

Series Number: 3.1

Item Number: 1-2002.3.1DC1

Accession Number: 1-2002

GMD: graphic

Date Range: [19-?]

Physical Description: 3 1/2" x 5"

Material Details: Negative

History /

Biographical:

Razed 1936

Custodial History:

For custodial history see the collection level description of the Lawrence Stuckey collection.

Scope and Content:

King Edward Hotel

Notes: 916 Pacific Avenue (Henderson Directory 1905); From Brandon Sun.

Name Access: King Edward Hotel

Subject Access: hotels

Brandon hotels

Repro Restriction: The McKee Archives is the copyright holder for the Stuckey materials.

Storage Location: Lawrence Stuckey collection

Images

