

S. J. McKee Archives



Original Grandstand

<http://archives.brandonu.ca/en/permalink/descriptions9815>

Part Of: RG 11 Lawrence Stuckey fonds

Description Level: Item

Series Number: 3.1

Item Number: 1-2002.3.1M25

Accession Number: 1-2002

GMD: graphic

Date Range: 1900

Physical Description: 3 1/2" x 5"

Material Details: Negative

History /

Biographical:

Section at left with high roof was added in 1900.

Custodial History:

For custodial history see the collection level description of the Lawrence Stuckey collection.

Scope and Content:

View of the original grandstand, full of people

Notes: From Nor'West Farmer

Name Access: Brandon Fairgrounds

Subject Access: fairs

exhibitions

Brandon Exhibitions & Facilities

Repro Restriction: The McKee Archives is the copyright holder for the Stuckey materials.

Storage Location: Lawrence Stuckey collection

Images





Original Music Building

<http://archives.brandonu.ca/en/permalink/descriptions901>

Part Of: Original Music Building and Queen Elizabeth II Music Building

Description Level: Item

Series Number: 2.8

Item Number: 2.8.12

GMD: graphic

Date Range: c. 1970s

Physical Description: 3.5" x 5" (colour)

History /

Biographical:

The Original Music Building was later the Student Services Building (1987 - c.1997). It then became the Health Studies Building.

Scope and Content:

Photograph is looking northwest and shows the south and east sides, including the main entrance, of the Original Music Building.



Original Music Building

<http://archives.brandonu.ca/en/permalink/descriptions902>

Part Of: Original Music Building and Queen Elizabeth II Music Building

Description Level: Item

Series Number: 2.8

Item Number: 2.8.21

GMD: graphic

Date Range: c. 1971

Physical Description: 8" x 10" (b/w)

Scope and Content:

Photograph is looking west northwest and shows the east side and part of the south side of the Original Music Building in winter.



Original Music Building

<http://archives.brandonu.ca/en/permalink/descriptions903>

Part Of: Original Music Building and Queen Elizabeth II Music Building

Description Level: Item

Series Number: 2.8

Item Number: 2.8.22

GMD: graphic

Date Range: c. 1971

Physical Description: 8" x 10" (b/w)

Scope and Content:

Photograph is looking west northwest and shows the east side and the south side of the Original Music Building in summer. The Western Manitoba Centennial Auditorium is in the background.



Original Music Building

<http://archives.brandonu.ca/en/permalink/descriptions904>

Part Of: Original Music Building and Queen Elizabeth II Music Building

Creator: Photographer: Henry Kalen Architectural Graphi Arts

Description Level: Item

Series Number: 2.8

Item Number: 2.8.23

GMD: graphic

Date Range: c. 1965

Physical Description: 8" x 10" (b/w)

Scope and Content:

Photograph is looking west northwest and shows the east side and south side of the Original Music Building. The photograph was taken before the construction of the Western Manitoba Centennial Auditorium.



Original Music Building

<http://archives.brandonu.ca/en/permalink/descriptions905>

Part Of: Original Music Building and Queen Elizabeth II Music Building

Description Level: Item

Series Number: 2.8

Item Number: 2.8.24

GMD: graphic

Date Range: c. 1970s

Physical Description: 8" x 10" (b/w)

Scope and Content:

Photograph is looking northwest from the east side of the driveway and shows the east side of the Original Music Building as well as a partial view of Princess Avenue. There are a number of students milling about in front of the building.



Original Music Building

<http://archives.brandonu.ca/en/permalink/descriptions906>

Part Of: Original Music Building and Queen Elizabeth II Music Building

Creator: Photographer: Henry Kalen Architectural Graphic Arts

Description Level: Item

Series Number: 2.8

Item Number: 2.8.25

GMD: graphic

Date Range: c. 1965

Physical Description: 8" x 10" (b/w)

Scope and Content:

Photograph is looking either south or north and shows one side of the Original Music Building.



Original Music Building

<http://archives.brandonu.ca/en/permalink/descriptions907>

Part Of: Original Music Building and Queen Elizabeth II Music Building

Description Level: Item

Series Number: 2.8

Item Number: 2.8.26

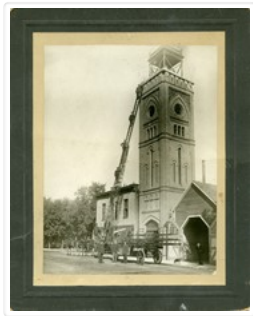
GMD: graphic

Date Range: c. early 1970s

Physical Description: 8" x 10" (b/w)

Scope and Content:

Photograph is looking south southwest from Princess Avenue and shows the east side of the Original Music Building and part of the north and east sides of the Education Building.



Original Fire Hall

<http://archives.brandonu.ca/en/permalink/descriptions13932>

Part Of: Fred McGuinness collection

Description Level: Item

Series Number: McG 9

Item Number: 1-2015.4

Accession Number: 1-2015

GMD: graphic

Date Range: 1884-1911

Physical Description: 5.75" x 7.5" (b/w)

Material Details: on matting

History /

Biographical:

The Original Brandon Fire Hall was located on the east half of the north side of the 600-block of Princess Avenue. The hall was in operation from 1884 to 1911.

Scope and Content:

Photograph shows Brandon's first fire hall on Princess Avenue. The hose tower and stable are visible. The horse-drawn ladder wagon is parked on the street in front of the hall and the rescue ladder is extended against the tower. Five firefighters are standing on the ladder and two are standing at its base.

Notes: Writing on the back of the photograph reads: Mrs. E. Harden, 6th Street

Name Access: Brandon Fire Department

Brandon Fire Department Ladder Wagon

Original Fire Hall

Early B.F.D. Ladder Wagon

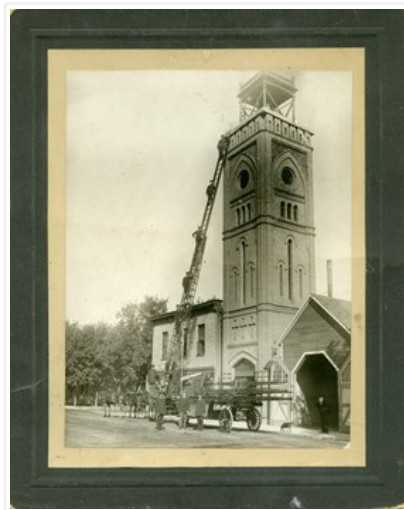
Subject Access: fire halls
fire engines
fire departments
early transportation
horses
dogs
fire protection
Brandon Fire Department Stations & Equipment

Storage Location: RG 5 photograph storage drawer 2 (hanging photos)

Related Material: Lawrence Stuckey collection 1-2002.3.1F3

Arrangement:
From loose photos, funny trunk

Images



Original Fire Hall

<http://archives.brandonu.ca/en/permalink/descriptions13933>

Part Of: Fred McGuinness collection

Description Level: Item

Series Number: McG 9

Item Number: 1-2015.5

Accession Number: 1-2015

GMD: graphic

Date Range: 1903-1905

Physical Description: 5.75" x 7.5" (b/w)

Material Details: on matting

History /

Biographical:

The Original Brandon Fire Hall was located on the east half of the north side of the 600-block of Princess Avenue. The hall was in operation from 1884 to 1911.

Scope and Content:

Photograph shows Brandon's first fire hall on Princess Avenue facing east. The hose tower and stables are visible. The three horse-drawn ladder wagon is parked on the right. Pairs of horses are harnessed to two hose wagons. A dog sits on the street before the parked wagons.

Notes: Writing on the back of the photograph reads: 1903 or 1905, "First Fire Hall," Princess Avenue, Brandon, Man.

Name Access: Brandon Fire Department
Brandon Fire Department Ladder Wagon
Original Fire Hall
Early B.F.D. Ladder Wagon

Subject Access: fire halls
fire engines
fire departments
early transportation
horses
dogs
fire protection
Brandon Fire Department Stations & Equipment

Storage Location: RG 5 photograph storage drawer 2 (hanging photos)

Related Material: Lawrence Stuckey collection 1-2002.3.1F4

Arrangement:

From loose photos, funny trunk

Images





Original Fire Hall

<http://archives.brandonu.ca/en/permalink/descriptions9587>

Part Of: RG 11 Lawrence Stuckey fonds

Creator: Martel

Description Level: Item

Series Number: 3.1

Item Number: 1-2002.3.1F2

Accession Number: 1-2002

GMD: graphic

Date Range: [ca. 1895]

Physical Description: 3 1/2" x 5"

Material Details: Negative

History /

Biographical:

In use from 1884 until 1911

Custodial History:

For custodial history see the collection level description of the Lawrence Stuckey collection.

Scope and Content:

Original fire hall and hose drying tower

Notes: Located on the east half of the north side of 600 block of Princess Avenue.

See also F1, F3, and F6

Name Access: Original Fire Hall

Subject Access: fire protection

fire halls

Brandon Fire Department Stations & Equipment

Repro Restriction: The McKee Archives is the copyright holder for the Stuckey materials.

Storage Location: Lawrence Stuckey collection

Images



Original Hydroelectric Dam

<http://archives.brandonu.ca/en/permalink/descriptions9735>



Part Of: RG 11 Lawrence Stuckey fonds
Description Level: Item
Series Number: 3.1
Item Number: 1-2002.3.1J1
Accession Number: 1-2002
GMD: graphic
Date Range: [ca. 1913]
Physical Description: 3 1/2" x 5"
Material Details: Negative

History /

Biographical:

Located about 10 miles west of Brandon on the Little Saskatchewan River, this dam was the first hydroelectric generating station in operation in western Canada. It began supplying power to the city in 1901. This power source, which could not operate in winter, was supplemented by the steam plant on 10th St. By about 1920 the steam plant had been greatly expanded and the hydroelectric plant closed. The old dam was washed out due to a thunder storm in 1948.

Custodial History:

For custodial history see the collection level description of the Lawrence Stuckey collection.

Scope and Content:

Original Hydroelectric Dam belonging to Brandon Light & Power Co.

Notes: See also J2 and J3a
Name Access: Original Hydroelectric Dam
Subject Access: hydro
generation of electricity
hydroelectric generation
dams
hydroelectric dams
Brandon Public Utilities

Repro Restriction: The McKee Archives is the copyright holder for the Stuckey materials.

Storage Location: Lawrence Stuckey collection

Images





Original Hydroelectric Dam

<http://archives.brandonu.ca/en/permalink/descriptions9736>

Part Of: RG 11 Lawrence Stuckey fonds

Description Level: Item

Series Number: 3.1

Item Number: 1-2002.3.1J2

Accession Number: 1-2002

GMD: graphic

Date Range: [ca. 1913]

Physical Description: 3 1/2" x 5"

Material Details: Negative

History /

Biographical:

Located about 10 miles west of Brandon on the Little Saskatchewan River, this dam was the first hydroelectric generating station in operation in western Canada. It began supplying power to the city in 1901. This power source, which could not operate in winter, was supplemented by the steam plant on 10th St. By about 1920 the steam plant had been greatly expanded and the hydroelectric plant closed. The old dam was washed out due to a thunder storm in 1948.

Custodial History:

For custodial history see the collection level description of the Lawrence Stuckey collection.

Scope and Content:

Original Hydroelectric Dam belonging to Brandon Light & Power Co.

Notes: See also J1 and J3a

Name Access: Original Hydroelectric Dam

Subject Access: hydro

generation of electricity

hydroelectric generation

dams

hydroelectric dams

Brandon Public Utilities

Repro Restriction: The McKee Archives is the copyright holder for the Stuckey materials.

Storage Location: Lawrence Stuckey collection

Images





Original Hydroelectric Dam

<http://archives.brandonu.ca/en/permalink/descriptions9737>

Part Of: RG 11 Lawrence Stuckey fonds

Description Level: Item

Series Number: 3.1

Item Number: 1-2002.3.1J3a

Accession Number: 1-2002

GMD: graphic

Date Range: [ca. 1913]

Physical Description: 3 1/2" x 5"

Material Details: Negative

History /

Biographical:

Located about 10 miles west of Brandon on the Little Saskatchewan River, this dam was the first hydroelectric generating station in operation in western Canada. It began supplying power to the city in 1901. This power source, which could not operate in winter, was supplemented by the steam plant on 10th St. By about 1920 the steam plant had been greatly expanded and the hydroelectric plant closed. The old dam was washed out due to a thunder storm in 1948.

Custodial History:

For custodial history see the collection level description of the Lawrence Stuckey collection.

Scope and Content:

Original Hydroelectric Dam belonging to Brandon Light & Power Co.

Notes: See also J1 and J2

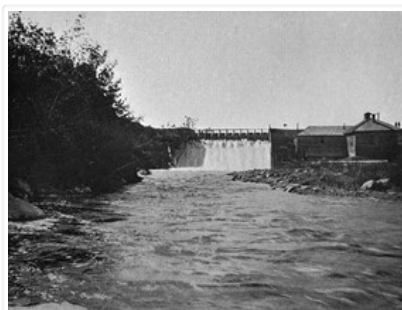
Name Access: Original Hydroelectric Dam

Subject Access: hydro
generation of electricity
hydroelectric generation
dams
hydroelectric dams
Brandon Public Utilities

Repro Restriction: The McKee Archives is the copyright holder for the Stuckey materials.

Storage Location: Lawrence Stuckey collection

Images





Original Hydroelectric Dam

<http://archives.brandonu.ca/en/permalink/descriptions9738>

Part Of: RG 11 Lawrence Stuckey fonds

Creator: Wm. Craig

Description Level: Item

Series Number: 3.1

Item Number: 1-2002.3.1J3b

Accession Number: 1-2002

GMD: graphic

Date Range: [ca. 1922]

Physical Description: 3 1/2" x 5"

Material Details: Negative

History /

Biographical:

Located about 10 miles west of Brandon on the Little Saskatchewan River, this dam was the first hydroelectric generating station in operation in western Canada. It began supplying power to the city in 1901. This power source, which could not operate in winter, was supplemented by the steam plant on 10th St. By about 1920 the steam plant had been greatly expanded and the hydroelectric plant closed. The old dam was washed out due to a thunder storm in 1948.

Custodial History:

For custodial history see the collection level description of the Lawrence Stuckey collection.

Scope and Content:

Original Hydroelectric Dam belonging to Brandon Light & Power Co.

Notes: [Mr. Stuckey put two negatives (with two views each) in one envelope, numbering each view J3b through J3e. We have separated them.]

Name Access: Original Hydroelectric Dam

Subject Access: hydro
generation of electricity
hydroelectric generation
dams
hydroelectric dams
Brandon Public Utilities

Repro Restriction: The McKee Archives is the copyright holder for the Stuckey materials.

Storage Location: Lawrence Stuckey collection

Images





Original Hydroelectric Dam

<http://archives.brandonu.ca/en/permalink/descriptions9739>

Part Of: RG 11 Lawrence Stuckey fonds

Creator: Wm. Craig

Description Level: Item

Series Number: 3.1

Item Number: 1-2002.3.1J3c

Accession Number: 1-2002

GMD: graphic

Date Range: [ca. 1922]

Physical Description: 3 1/2" x 5"

Material Details: Negative

History /

Biographical:

Located about 10 miles west of Brandon on the Little Saskatchewan River, this dam was the first hydroelectric generating station in operation in western Canada. It began supplying power to the city in 1901. This power source, which could not operate in winter, was supplemented by the steam plant on 10th St. By about 1920 the steam plant had been greatly expanded and the hydroelectric plant closed. The old dam was washed out due to a thunder storm in 1948.

Custodial History:

For custodial history see the collection level description of the Lawrence Stuckey collection.

Scope and Content:

Original Hydroelectric Dam belonging to Brandon Light & Power Co.

Notes: [Mr. Stuckey put two negatives (with two views each) in one envelope, numbering each view J3b through J3e. We have separated them.]

Name Access: Original Hydroelectric Dam

Subject Access: hydro

generation of electricity

hydroelectric generation

dams

hydroelectric dams

Brandon Public Utilities

Repro Restriction: The McKee Archives is the copyright holder for the Stuckey materials.

Storage Location: Lawrence Stuckey collection

Images





Original Hydroelectric Dam

<http://archives.brandonu.ca/en/permalink/descriptions9740>

Part Of: RG 11 Lawrence Stuckey fonds

Creator: Wm. Craig

Description Level: Item

Series Number: 3.1

Item Number: 1-2002.3.1J3d

Accession Number: 1-2002

GMD: graphic

Date Range: [ca. 1922]

Physical Description: 3 1/2" x 5"

Material Details: Negative

History /

Biographical:

Located about 10 miles west of Brandon on the Little Saskatchewan River, this dam was the first hydroelectric generating station in operation in western Canada. It began supplying power to the city in 1901. This power source, which could not operate in winter, was supplemented by the steam plant on 10th St. By about 1920 the steam plant had been greatly expanded and the hydroelectric plant closed. The old dam was washed out due to a thunder storm in 1948.

Custodial History:

For custodial history see the collection level description of the Lawrence Stuckey collection.

Scope and Content:

Original Hydroelectric Dam belonging to Brandon Light & Power Co.

Notes: [Mr. Stuckey put two negatives (with two views each) in one envelope, numbering each view J3b through J3e. We have separated them.]

Name Access: Original Hydroelectric Dam

Subject Access: hydro
generation of electricity
hydroelectric generation
dams
hydroelectric dams
Brandon Public Utilities

Repro Restriction: The McKee Archives is the copyright holder for the Stuckey materials.

Storage Location: Lawrence Stuckey collection

Images





Original Hydroelectric Dam

<http://archives.brandonu.ca/en/permalink/descriptions9741>

Part Of: RG 11 Lawrence Stuckey fonds

Creator: Wm. Craig

Description Level: Item

Series Number: 3.1

Item Number: 1-2002.3.1J3e

Accession Number: 1-2002

GMD: graphic

Date Range: [ca. 1922]

Physical Description: 3 1/2" x 5"

Material Details: Negative

History /

Biographical:

Located about 10 miles west of Brandon on the Little Saskatchewan River, this dam was the first hydroelectric generating station in operation in western Canada. It began supplying power to the city in 1901. This power source, which could not operate in winter, was supplemented by the steam plant on 10th St. By about 1920 the steam plant had been greatly expanded and the hydroelectric plant closed. The old dam was washed out due to a thunder storm in 1948.

Custodial History:

For custodial history see the collection level description of the Lawrence Stuckey collection.

Scope and Content:

Original Hydroelectric Dam belonging to Brandon Light & Power Co.

Notes: [Mr. Stuckey put two negatives (with two views each) in one envelope, numbering each view J3b through J3e. We have separated them.]

Name Access: Original Hydroelectric Dam

Subject Access: hydro

generation of electricity

hydroelectric generation

dams

hydroelectric dams

Brandon Public Utilities

Repro Restriction: The McKee Archives is the copyright holder for the Stuckey materials.

Storage Location: Lawrence Stuckey collection

Images





Original Music Building foyer

<http://archives.brandonu.ca/en/permalink/descriptions953>

Part Of: Original Music Building and Queen Elizabeth II Music Building

Description Level: Item

Series Number: 2.8

Item Number: 2.8.18

GMD: graphic

Date Range: c. 1960s

Physical Description: 5" x 7" (colour)

Scope and Content:

Photograph shows the interior of the Original Music Building foyer. The woman in the white blouse is Lorraine Adam.



Original CPR freight shed

<http://archives.brandonu.ca/en/permalink/descriptions8775>

Part Of: RG 11 Lawrence Stuckey fonds

Creator: Photographer: Martel

Description Level: Item

Series Number: 3.9

Item Number: 1-2002.3.9.150

Accession Number: 1-2002

GMD: graphic

Date Range: 1903

Physical Description: 7.25" x 4" (b/w)

History /

Biographical:

Stuckey's notes: Including A.K. & Co. elevator. Freight shed replaced in 1904.

Scope and Content:

Photograph shows the freight office, part of a train and the top half of A.K. & Co. Elevator B(?).

Notes: Corresponds with negative 1-2002.3.9.P5.

Repro Restriction: The McKee Archives is the copyright holder for the Stuckey materials.

Location Original: 1-2002.3.1P5

Storage Location: RG 5 photograph storage drawer

Images

