

S. J. McKee Archives



Provincial exhibition of Manitoba photographs

<http://archives.brandonu.ca/en/permalink/descriptions4361>

Part Of: RG 2 Provincial Exhibition of Manitoba Association fonds

Creator: Known creators of the records include:

PHOTOGRAPHERS AND PHOTO SERVICES

Ayers Photographs
Bob Evans
Donald Huskins
Earl Kennedy Specialized Photographic Services, Winnipeg, Manitoba
Ernie Tayler, Brandon, Manitoba
Frank Gowen, Brandon, Manitoba
H. M. Salisbury, Brandon, Manitoba
H. R. Hoffman Ltd., Brandon, Manitoba
Harold K. White
Hildebrand
Hungry I. Agency
Jerrett's Photo
Lawrence Stuckey, Brandon, Manitoba
Mid-Co.
Pugh Mfg. Co. Ltd., Toronto, Ontario
R. M. Coleman, Brandon, Manitoba
Smith K. C. Mo.
Stovel Co.
Turofsky, Toronto, Ontario
Western Engravings
Wilkinson Photography, Newmarket, Ontario

NEWSPAPERS

Brandon Sun, Brandon, Manitoba
Winnipeg Free Press, Winnipeg, Manitoba

PRINTING SERVICES

Leech Printing Ltd., Brandon, Manitoba
Crawford Drug Store, Brandon, Manitoba

GOVERNMENT

Department of Industry and Commerce, Manitoba
Frank Royal of the National Film Board

Description Level: Series

Fonds Number: RG2SF1

Series Number: 1.9

GMD: graphic
Date Range: 1885-1988
Physical Description: 793 photographs and other graphic materials
History /
Biographical:

Many of these records were donated to the Board by exhibitors and participants in the fairs. Some are advertisements sent to the Provincial Exhibition Board by businesses such as Conklin Shows. Professional photographers, who were likely hired by the Board, generated others. As well, Brandon Sun photographers took a large number of the photos throughout the century. In the 1980s, the Sun photos were reprinted and then the reprints were added to the Exhibition's collection. Privately owned photos were also reprinted and added. Publishing houses generated some photographs, probably as services to participants and organizers of the fairs. Finally, the Canadian and Manitoba governments created a few of the photos.

Custodial History:

Exhibitors and participants in activities at the summer fair donated many of these records to the Provincial Exhibition Board. The Manitoba Provincial Archives in Winnipeg housed other records, of which the McKee Archives acquired copies. Most of the records were stored in the offices of the Provincial Exhibition Association of Manitoba until they were brought to the McKee Archives ca. 1986.

Scope and Content:

Series consists primarily of black and white photographs pertaining to the Provincial Exhibition. Subjects of the records vary over the century, but overall subjects included are buildings and grounds, horses, livestock, exhibits, youth activities, entertainment, and dignitaries. Almost all of the materials are in excellent condition.

BUILDINGS AND GROUNDS

The graphics that depict the buildings and grounds of the summer fair are both ground and aerial photos. From the records generated between 1900 and 1930, there are pictures of the Crystal Palace, the Wheat City Arena, the Experimental Farm, the horse barns, the racetrack, and the grandstand. The pictures dating from the forties through the sixties are of the racetrack, the grandstand, the Provincial Display Building, the Trade Fair Building, and the Main Gate. The records from the 1970s and the 1980s feature the Keystone Centre, cattle buildings, and horse stables.

HORSES

Graphics from the 1890s through the 1980s feature various light and heavy horses, from single horses to eight-horse teams. Pictures dating from the first fifty years of the fair are of stallion and purebred shows. Also depicted are racing events such as chuck wagon, bike, and single rider races. Graphics of equestrian events like jumping and hackney classes date from World War II until the 1980s. Dating from the fifties to the seventies are photos of children's events like costume classes and pony competitions. Finally, pictures of barrel racing and horse pulling competitions date from the 1970s and 1980s.

LIVESTOCK

Livestock photos, which date throughout the twentieth century, are mostly of cattle and swine, but there are a few pictures of buffalo and sheep. Cattle photos depict purebreds such as Holstein, Jersey, Hereford, and Angus. Swine pictures are of Yorkshire sows and boars, as well as of market hogs.

POULTRY AND EGGS

Graphics depicting poultry and egg shows date between 1950 and 1985.

EXHIBITS

Photos of exhibits taken throughout the century feature home-craft displays such as clothes and quilts. Tack rooms, farm implement shows, and club displays, like those of the Brandon Lion's Club, are also consistent throughout the period. Other graphics of exhibits are particular to certain years: in the late 1940s through the 1950s auto shows are featured; and from the fifties to the eighties commercial exhibits are prominent.

YOUTH ACTIVITIES

Graphics of children and teens' activities form a large part of MG 1. From the 1920s and 1930s, there are pictures of boys and teens who attended the Farm Boys' Camp. Photos taken at the Agricultural and Homemaking School in the late 1940s and early 1950s depict male teens learning about mechanics, welding, and electricity. Photos of female teens at the camp depict weaving, sewing, and cooking classes. In the records dating from 1957 to the 1980s, photos feature both pig and calf scrambles. As well, some pictures are of male teens participating in seed, poultry, and judging courses. Photos of female teens during these years show them participating in such activities as clothes-making, 4-H Queen contests, and fashion shows.

ENTERTAINMENT

Entertainment pictures include graphics of the midway, the carnival and travelling acts, parades, and miscellaneous events. Pictures of the midway are both aerial and ground photos, and date from 1913 to the 1970s. Ferris wheels and carousels are the main rides featured until the 1960s, after which many motorized rides like the Wild Mouse and the Tidal Wave are prominent.

Carnival pictures throughout the century include shots of aisles along which several attractions are set up. Photos of clowns and other costumed people are numerous. Graphics of travelling acts depict parachutists (1920s), follies (1950s), exotic dancers (1950s), trained animals (1950s-1970s), singers and bands (1970s-1980s), and trapeze artists (1970s).

Parade photos date throughout the century, and feature pipers, horses pulling carriages, people riding horses, clowns, soldiers, floats, and members of various clubs.

Miscellaneous events graphics include pictures of horseshoe throwing competitions, square dancing shows (1950s), fiddling contests (1970s), smash-up derbies (1980s), and tractor pulls (1980s).

FIRST NATIONS PEOPLE

There are seven photos of First Nations people at the summer fair. In all but one of the pictures, they are in traditional costume. Depicted are pow-wows, parades, a female teen sewing a mukluk, and tee-pees. These records date from 1914 to 1969.

DIGNITARIES

Pictures of dignitaries are of members of the Provincial Exhibition committees and boards; federal, provincial, and municipal politicians who attended the summer fair; and various business, medical, and judicial representatives. Especially notable are the group photos of the Board of Directors for the years 1894, 1900, 1941, 1949, 1951, 1952, and 1968.

The graphic materials of RG2SF1 are useful for many purposes. For one, they offer a rich visual history of the fair. Agricultural historians will find poultry, horse, livestock, horticultural, and farm implement images informative. Such images describe how farming has changed

and farm implement images informative. Such images describe how farming has changed through the last century. The records offer many clues into the cultural history of Brandon and surrounding area. The nature of the carnival, for instance, changes. At the turn of the century, attractions of various booths were not advertised overtly; one had to pay before they were given hints as to what they were going to view. By the Second World War, however, attractions' exteriors were more garish. Because the carnival was more open in its advertisements, one can determine that the boundaries between the private and public shifted in the first forty years of the twentieth century.

The pictorial history of the exhibits at the fair reveals much about the city's culture. The pictures from the post-World War II era, for example, are indicative of the period's climate of consumerism: a commercial display building was built and commercial exhibits were added to the displays of the fair. Also signified in the postwar photos is the emphasis upon family values that pervaded the fifties; for instance displays of home-crafts became prominent in these years.

Social historians will find in these records a vibrant portrait of the social composition of twentieth-century Brandon. The community's leaders, for example, are represented in the pictures of the Boards of Directors. From these photos, one can ascertain the social characteristics of Board members: white, male, and middle class. Parade photos are also indicative of social composition, as organizations from all classes of society participated in parades. Agricultural clubs, unions, women's organizations, and church groups are just a few of the entries featured in the parade pictures.

Historians of gender will find that throughout the fairs' years definitions of femininity changed. In the early fairs, women are shown in their booths at home shows, demonstrating their association with the private sphere. During the Second World War, some photos start to appear of women doing secretarial work. After World War II, however, gender norms constricted. Pictures of female teens taking classes at the Agricultural and Homemaking School depict them learning about how to run a well maintained home: they learn about sewing, cooking, and weaving. In the seventies, gender boundaries again shifted: for example, female teens began to participate in the previously male-only calf scramble events.

Finally, these records are useful for any historian of Brandon and area history. There are thousands of people from the region featured in these records. Different places and buildings in Brandon are also a prominent part of the collection. Together, the pictures of RG2SF1 offer a vivid history of both Brandon and the Provincial Exhibition.

Storage Location:	RG 2 Provincial Exhibition of Manitoba Association fonds RG2SF1 Provincial Exhibition of Manitoba
Related Material:	Pictures of the Provincial Exhibition may also be found on the National Archives of Canada website. The Western Canadian Pictorial Index in Winnipeg, Manitoba, houses additional graphic records of the summer fair.

Arrangement:

Item-level descriptions of the graphics of RG2SF1 through RG2SF4 are located on a searchable database. This database is entitled "Brandon Photographs" and can be read using Microsoft Access. "Brandon Photographs" is located on a 3½ floppy disk entitled "Provincial Exhibition Association of Manitoba fonds Series 9" included in this finding aid. The description of each photograph on this database includes the following information: accession number, title, date, place, physical description, scope and content, notes, creator, and copyright. By searching the database, individual photographs can be located easily. See the printed finding aid for instructions on how to use the photograph database.

Graphics for RG2SF1 through RG2SF4 are located in boxes. Graphics larger than 24 x 35 cm are located in the image mapcase, which is located in the reading room. The graphics are filed chronologically by accession number. The arrangement is as follows:

Provincial Exhibition of Manitoba Association fonds; RG2SF1-RG2SF4, Series 9
Boxes 1 through 15, as follows:

Box 1 EX0001 to EX0125
Box 2 EX0157 to EX0263
Box 3 EX0265 to EX0399
Box 4 EX0400 to EX0499
Box 5 EX0500 to EX0599
Box 6 EX0600 to EX0699
Box 7 EX0700 to EX0799
Box 8 EX0800 to EX0899
Box 9 EX0900 to EX0921
Box 10 EX1000 to EX1099
Box 11 EX1100 to EX1199
Box 12 EX1200 to EX1299
Box 13 EX1300 to EX1399
Box 14 EX1400 to EX1499
Box 15 EX1549 to EX1859



RG2SF2 Manitoba winter fair

<http://archives.brandonu.ca/en/permalink/descriptions4364>

Part Of:	RG 2 Provincial Exhibition of Manitoba Association fonds
Description Level:	Sous-fonds
Fonds Number:	RG2SF2
GMD:	multiple media
Date Range:	1908-1992
Physical Description:	2.65 m textual records 780 graphics

History /

Biographical:

The first attempts to hold a winter agricultural fair in Brandon happened in 1884, when a show was held in the buildings owned by A. Harrison and Company. However, this did not become an annual event. There were also several unsuccessful attempts to establish annual Stallion Sales in the late spring by horsemen in the area. In 1904, J.D. McGregor petitioned Brandon City Council for a winter fair. The petition was accepted by the city, and in 1906 Brandon's first winter fair was held. It was a big success, and the Board of Directors looked forward to it

becoming an annual event. The summer fair, which had been in operation since 1882 welcomed this new exhibition. The Board of the summer fair felt that a winter fair would be complementary to the summer exhibition. Although the two fairs were not amalgamated, they did share a secretary-treasurer and several Board members.

In 1907, the Cattle Breeders Association decided to make the Brandon Winter Fair the site of its annual stock sale. With this support, it was felt that the winter fair would become an annual event. A joint stock company was created in 1907 entitled the Brandon Winter Fair and Livestock Association (BWFLA), to be used primarily as a land-holding company. Land was purchased at Tenth Street and McTavish Avenue in order to erect a winter fair building.

The following year, the Provincial Winter Fair and Fat Stock Association was created to manage the winter fair. The name was soon changed to the Manitoba Winter Fair and Fat Stock Association (MWFFSA). Unlike the summer fair, the winter fair was solely an agricultural event. The Board felt no need to please the citizens with carnivals and midways. The winter fair was "by and for the farmers...[and]...the primary functions of the Brandon Winter Fair were to educate the agricultural community and to honour the community's accomplishments."

Additional land was bought on Eleventh Street and Victoria Avenue to build a new winter fair building. The building opened in 1913. By this time, the Brandon Winter Fair was one of the best livestock and agricultural exhibitions in the province.

When the First World War broke out, the winter fair buildings were requisitioned by the military for troop accommodation and eventually as a detention centre for Ukrainian internees and other "enemy aliens." Unlike the summer fair, which was allowed to use their buildings during fair week, the winter fair buildings were not released for the exhibition. This led to the cancellation of both the 1915 and 1916 winter fairs.

By 1917 the winter fair was allowed to open again, but by this time both the BWFLA and the MWFFSA were experiencing financial difficulties. It was at this time that the proposal first went out regarding an amalgamation of the summer and winter fairs. The provincial government approved of the idea of an amalgamation, and both fair Boards considered the proposal. However, in early 1920 the winter fair Board pulled out of the discussions, as it felt that the winter fair would lose out to the WAAA. The winter fair Board decided to struggle on independently.

Financial problems heightened Board concerns that the winter fair was not exciting enough to keep the public interest. To add to the financial concerns of the winter fair board, in the fall of 1920, the old winter fair pavilion caught fire and burned. Forty six horses were killed and the fair Board had to cancel the 1921 winter fair. When the new winter fair building opened in 1922, it was greeted with enthusiasm. The Directors, in an attempt to ease the increasing financial burden they were feeling, tried to keep the buildings open year round for other events.

In 1929, the Depression began in Canada. While the winter fair continued to run, its buildings were once again requisitioned by the government, this time to house men looking for work. The winter fair Directors were conscious of the problems that the citizens of Brandon were facing, and they offered free admission to those on relief. The fair received grants from the government to provide work relief programs, but these were often small or canceled. The Board members may have resorted to helping to pay for the fair out of their own pockets.

Despite financial problems, the winter fair managed to survive the Depression. Unfortunately, as Brandon recovered from the Depression of the 1930s, the Second World War broke out. For the third time in as many decades, the government requisitioned the winter fair buildings. This time, however, instead of canceling the fair as in previous years, the winter fair went on as scheduled, although it was held on the summer fair grounds.

By 1945, the directors were at a loss financially. They decided that the best course of action in

order to keep the fair going was to turn over the buildings to the City of Brandon. By the fall of 1946 the BWFLA had ceased operations.

While the Manitoba Winter Fair and the Provincial Exhibition of Manitoba were still not amalgamated, they continued to share the same secretary-manager and several Board members. After the cessation of the war, the Directors knew they had to become more appealing to the wider public. There were promotional events held and more entertainment was offered to attract the public. These additions led to dissension among Board members, as some wanted the fair to remain purely agricultural. The appeal for the greater good of the fair, even if it did include some non-agricultural attractions, eventually won out.

The fair was still to be plagued with difficulties though. In 1952 the fair had to be canceled because of an outbreak of hoof and mouth disease. Despite setbacks such as this, the Board persevered. The following year a 4-H seed show was created and sponsored by the provincial agronomist, P.F. Ford. A carcass class was added in 1957. Soon the fair was successful and stable and rapidly outgrew its facilities.

It was decided by 1966 that the winter fair and the summer fair should be housed in one building. In 1969, the respective Boards went one step further and decided to become one organization. The Manitoba Winter Fair and the Provincial Exhibition of Manitoba amalgamated in 1969 to become the Manitoba Exhibition Association. In 1970, the year of Manitoba's Centennial, it was decided that an organization in the province would receive the designation "Royal" by Queen Elizabeth II. After much consideration by the province, the Manitoba Winter Fair was chosen, and in 1970 it became known as the Royal Manitoba Winter Fair. In 1972 the construction of a common facility was completed, and the 1973 winter fair was the occasion of the official opening of the Keystone Centre. The winter fair continues in this facility and under this designation to this day.

Custodial History:

The records were housed at the MWFFSA, the MWF and the MEA until c1986 when they were transferred to the S.J. McKee Archives at Brandon University.

Scope and Content:

The sous-fonds consists of textual records and photographs pertaining to the Winter Fair. The textual records include prize lists, programs, minutes, financial, administrative files, original results, news releases, scrapbooks, and tickets. The photographs include animal shows and events, dignitaries, entertainment, ceremonies, buildings, and other events.

The sous-fonds has been divided into eleven series, including: (1) Documents; (2) Minutes; (3) Financial records; (4) Administrative files; (5) Prize lists and programs; (6) News releases; (7) Original results; (8) Tickets; (9) Photographs; (10) Scrapbooks; and (11) Miscellaneous

Storage Location: RG 2 Provincial Exhibition of Manitoba Association fonds



Manitoba winter fair documents

<http://archives.brandonu.ca/en/permalink/descriptions4365>

Part Of: RG 2 Provincial Exhibition of Manitoba Association fonds

Description Level: Series

Fonds Number: RG2SF2

Series Number: 2.1

GMD: textual records

Date Range: 1908-1968

Physical Description: 6.5 cm

History /

Biographical:

The documents were created by members of the Board of Directors, and others involved with the management of the winter fair.

Custodial History:

See sous-fonds RG2SF2 for custodial history.

Scope and Content:

The series includes several copies of the MWF Constitution, a 1908 constitution, 1909 MWFFSA shares belonging to John Bradley, a 1968 agreement for the non-military use of property, and several agreements between the MWF and several other companies spanning the dates 1934 to 1963.

Notes: Part of RG2SF2. Inventory of the documents in the series is available in the printed finding aid.

Storage Location: RG 2 Provincial Exhibition of Manitoba Association fonds
RG2SF2 Manitoba Winter Fair



Manitoba winter fair minutes

<http://archives.brandonu.ca/en/permalink/descriptions4366>

Part Of: RG 2 Provincial Exhibition of Manitoba Association fonds

Description Level: Series

Fonds Number: RG2SF2

Series Number: 2.2

GMD: textual records

Date Range: 1908-1932

Physical Description: 6.5 cm

History /

Biographical:

These minutes were created by the Board of Directors and the Shareholders at the meetings that they held from 1908 to 1932. The Board of Directors was created in 1908. While the collection currently houses minutes from 1908 to 1932, it is evident from Prize Lists and Programs that the Board of Directors structure evolved in the following way.

The structure of the winter fair was quite different from the summer fair. Instead of having a committee structure, the winter fair had both committees and representatives from various agricultural associations. The representatives were part of the Board of Directors. In 1908 these representatives included men from the Horse Breeders' Association, the Cattle Breeders' Association, the Sheep Breeders' Association, the Swine Breeders' Association, the Poultry Breeders' Association, the Brandon Winter Fair and Fat Stock Association, and the Manitoba Agricultural College. With the addition of representatives from the Manitoba Clydesdale Association, and the Manitoba Seed Growers' Association, these committees continued virtually without change until 1930.

By the 1930s, several more representatives joined the Board of Directors including the Winnipeg Livestock Exchange, the Manitoba Percheron Association, the Canadian Shorthorn Association, and the Hereford Association. By 1935 there were also representatives from the Prairie Thoroughbred and Racing Association, the Manitoba Boards of Trade, the Western Manitoba Board of Trade, the Aberdeen Angus Association, and the Canadian Percheron Association. The Canadian Clydesdale Association joined the Board by 1940.

By 1950, several more agricultural associations had joined the Board of Directors. They included the Brandon Light Horse Society, the Brandon Chamber of Commerce, the Manitoba Veterinary Association, the Minister of Agriculture, the Deputy Minister of Agriculture, and the Canadian Red Poll Association. By 1955, a representative from the City of Brandon rounded out the representatives on the Board of Directors.

The first committees of the Board of Directors began in 1908 with the formation of the Brandon Winter Fair and Fat Stock Association. The committees included an Executive, Horse, Livestock, Cattle, Sheep, Swine, Poultry and Seed. By 1915 there were also Program, Prize/Accounts, Carcass, Exhibits/Public Comfort, Building, and Provincial Government committees. Most of these later committees were not long lived, or were not mentioned much past 1915. A Judging Competition Committee was added in 1925 and lasted until sometime in the 1940s. In 1950 an official Finance committee was formed, as well as a Gates/Tickets committee. By 1955, three more committees had been added including 4-H/Junior Activities, Light Horse and Heavy Horse.

By the 1960s, a Publicity committee was also added. In 1965 there were several committees formed including Police/Traffic/Parking, Concessions, Calf/Pig Scrambles, Baby Fair, Flower Show and the Fall Feeder Show and Sale. A Fashion Show committee was added by 1970. In 1975 a Property committee is also mentioned.

The 1980s appear to have been a time of great growth for the winter fair, as there was a large increase in the number of committees. By 1985 the following committees had been formed: Dance, Hitching Ring, Steer Show, Bull Sale, Western Breakfast, Egg Show, Entertainment, Exhibitor's Lounge, VIP, Cattle Parade, Calcutta, Winter Fair Sponsors, Casino and Royal Manitoba Winter Fair. These committees continued for the most part through into the 1990s.

Custodial History:

See sous-fonds RG2SF2 for custodial history.

Scope and Content:

The series includes the minutes from meetings held from 1908 to 1932. An interesting aspect to these records is that they include the first meetings held by the newly formed winter fair Board of Directors. The early minutes are an interesting look into the formation of an organization.

Notes: Inventory of the documents in the series is available in the printed finding aid.

Storage Location: RG 2 Provincial Exhibition of Manitoba Association fonds
RG2SF2 Manitoba Winter Fair



Manitoba winter fair tickets

<http://archives.brandonu.ca/en/permalink/descriptions4372>

Part Of: RG 2 Provincial Exhibition of Manitoba Association fonds

Description Level: Series

Fonds Number: RG2SF2

Series Number: 2.8

GMD: multiple media

Date Range: 1966-1973

Physical Description: 10 cm textual records
tickets, badges, ribbons

History /

Biographical:

The records were created by a member of the administrative staff of the winter fair.

Custodial History:

The records were housed at the MWF, and the MEA until c1986 when they were transferred to the S.J. McKee Archives at Brandon University.

Scope and Content:

The series includes two files that house correspondence dealing with the issue of complimentary tickets. As well, the series includes many examples of tickets, badges, and ribbons from the winter fairs of 1966-1973.

Notes: Part of RG2SF2. Inventory of the documents in the series is available in the printed finding aid.

Storage Location: RG 2 Provincial Exhibition of Manitoba Association fonds
RG2SF2 Manitoba Winter Fair



Manitoba winter fair scrapbooks

<http://archives.brandonu.ca/en/permalink/descriptions4374>

Part Of: RG 2 Provincial Exhibition of Manitoba Association fonds

Description Level: Series

Fonds Number: RG2SF2

Series Number: 2.10

GMD: textual records

Date Range: 1966-1971, 1975

Physical Description: 6 cm

History /

Biographical:

The records were created by a member of the administrative staff of the winter fair.

Custodial History:

The records were housed at the MWF, and the MEA until c1986 when they were transferred to the S.J. McKee Archives at Brandon University.

Scope and Content:

The series contains scrapbooks from 1966 to 1971, and 1975. The scrapbooks are mainly newspaper clippings pertaining to the winter fair.

Notes: Part of RG2SF2. Inventory of documents in the series is available in the printed finding aid.

Storage Location: RG 2 Provincial Exhibition of Manitoba Association fonds
RG2SF2 Manitoba Winter Fair



Manitoba winter fair miscellaneous

<http://archives.brandonu.ca/en/permalink/descriptions4375>

Part Of: RG 2 Provincial Exhibition of Manitoba Association fonds

Description Level: Series

Fonds Number: RG2SF2

Series Number: 2.11

GMD: textual records

Date Range: 1920, 1926, 1955, 1971

Physical Description: 6.5 cm

History /

Biographical:

See Administrative History for RG2SF2 Royal Manitoba Winter Fair.

Custodial History:

The records were housed at the BWFLA, the MWF, and MEA until c1986 when they were transferred to the S.J. McKee Archives located at Brandon University.

Scope and Content:

The series contains records that did not fit into any other series. Some of these records include, notices of meetings, a donation sheet, sketches for a RMWF logo, a speech, and an article about Robert John Wright.

Notes: Inventory of documents in the series is available in the printed finding aid.

Storage Location: RG 2 Provincial Exhibition of Manitoba Association fonds
RG2SF2 Manitoba Winter Fair



Manitoba winter fair financial records

<http://archives.brandonu.ca/en/permalink/descriptions4367>

Part Of: RG 2 Provincial Exhibition of Manitoba Association fonds

Description Level: Series

Fonds Number: RG2SF2

Series Number: 2.3

GMD: textual records

Date Range: 1925-1977

Physical Description: 76.5 cm

History /

Biographical:

This series was created by a committee attached to the Board of Directors of the winter fair.

Custodial History:

See sous-fonds RG2SF2 for custodial history.

Scope and Content:

The series contains financial statements from 1925 and 1926, as well as financial records from the 1930s to 1969. There is also a transfer ledger from the years 1939 to 1953. There is a box with the statement of prizes won from 1972 to 1977.

Notes: Inventory of the documents in the series is available in the printed finding aid.

Storage Location: RG 2 Provincial Exhibition of Manitoba Association fonds
RG2SF2 Manitoba Winter Fair



Manitoba winter fair administrative files

<http://archives.brandonu.ca/en/permalink/descriptions4368>

Part Of: RG 2 Provincial Exhibition of Manitoba Association fonds

Description Level: Series

Fonds Number: RG2SF2

Series Number: 2.4

GMD: textual records

Date Range: 1980, 1982

Physical Description: 62 cm

History /

Biographical:

These files were created by a member of the administrative staff of the winter fair.

Custodial History:

The records were housed at the MEA until c1986 when they were transferred to the S.J. McKee Archives at Brandon University.

Scope and Content:

The files include the administrative records from the 1980 RMWF and the 1982 RMWF. The files encompass such subjects as Prize List Production, Concessions, Correspondence, Mailing Lists, Canvassing, Grants and Donations, and many others.

Notes: Part of RG2SF2. Inventory of the documents in the series is available in the printed finding aid.

Storage Location: RG 2 Provincial Exhibition of Manitoba Association fonds
RG2SF2 Manitoba Winter Fair



Manitoba winter fair news releases

<http://archives.brandonu.ca/en/permalink/descriptions4370>

Part Of: RG 2 Provincial Exhibition of Manitoba Association fonds

Description Level: Series

Fonds Number: RG2SF2

Series Number: 2.6

GMD: textual records

Date Range: 1984-1989

Physical Description: 6.5 cm

History /

Biographical:

This series was created by the Publicity committee attached to the Board of Directors. There are no records of this committee, but it is possible to find mention of it in the prize lists and programs for the winter fair. See Appendix 2 in the printed finding aid.

Custodial History:

The records were housed at the MEA until c1986 when they were transferred to the S.J. McKee Archives at Brandon University on a continuing basis.

Scope and Content:

The series include the news releases that were sent out to various media to promote the fair. The series includes the years 1984, 1985, 1987, and 1989.

Notes: Part of RG2SF2. Inventory of the documents in the series is available in the printed finding aid.

Storage Location: RG 2 Provincial Exhibition of Manitoba Association fonds
RG2SF2 Manitoba Winter Fair



Manitoba winter fair original results

<http://archives.brandonu.ca/en/permalink/descriptions4371>

Part Of: RG 2 Provincial Exhibition of Manitoba Association fonds

Description Level: Series

Fonds Number: RG2SF2

Series Number: 2.7

GMD: textual records

Date Range: 1982-1985

Physical Description: 43.5 cm

History /

Biographical:

The series was created by a member of the administrative staff of the Board of Directors. It is believed that these files were originally part of a larger administrative file, but before deposit in the archives they were separated from the files and a new series was created.

Custodial History:

The records were held by the MEA until c1986 when they were transferred to the S.J. McKee Archives at Brandon University.

Scope and Content:

The files include original results for the different events from 1982, 1983, 1984, and 1985.

Notes: Part of RG2SF2. Inventory of the documents in the series is available in the printed finding aid.

Storage Location: RG 2 Provincial Exhibition of Manitoba Association fonds
RG2SF2 Manitoba Winter Fair



Manitoba winter fair prize lists and programs

<http://archives.brandonu.ca/en/permalink/descriptions4369>

Part Of: RG 2 Provincial Exhibition of Manitoba Association fonds

Description Level: Series

Fonds Number: RG2SF2

Series Number: 2.5

GMD: textual records

Date Range: 1918-1992

Physical Description: 56 cm

History /

Biographical:

The prize lists and programs of the winter fair were created by a committee attached to the Board of Directors of the fair. This committee was in existence from c1909, shortly after the winter fair was organized.

Custodial History:

See sous-fonds RG2SF2 for custodial history.

Scope and Content:

The series includes prize lists and programs from 1918 to 1992. The programs include daily programs, as well as individual classes and competitions. They also list the competitors for each class. The prize lists include all classes and the prize money or prize to be won.

Notes: Inventory of the documents in the series is available in the printed finding aid.

Storage Location: RG 2 Provincial Exhibition of Manitoba Association fonds
RG2SF2 Manitoba Winter Fair



AgEx photographs

<http://archives.brandonu.ca/en/permalink/descriptions4381>

Part Of: RG 2 Provincial Exhibition of Manitoba Association fonds

Description Level: Series

Fonds Number: RG2SF3

Series Number: 3.9

GMD: graphic

Date Range: 1976-1989

Physical Description: 316 photographs and 3 prints

History /

Biographical:

Walt Browarny of Browarny Photography located in Calgary, Alberta created most of the photographs in this series. Other creators include Buddy Knox Entertainment Enterprises Limited, Arnaud, Manitoba and Frank Brandes Enterprises, Los Angeles, California. Leech Printing Limited of Brandon, Manitoba printed a few of these photos, likely as a service to the organizers of AgEx.

Custodial History:

Some of the AgEx graphics were stored with the Provincial Exhibition and Royal Manitoba Winter Fair photograph records at the MEA offices until these records were brought to the McKee Archives ca. 1986. Most of the pictures, however, were included in the textual records of the AgEx sous-fonds. Since ca. 1986, this sous-fonds has been transferred on a continuing basis to the McKee Archives. In July 1999, the AgEx photographs were separated from the sous-fonds' textual records and were placed in Series 9.

Scope and Content:

Series consists equally of colour and black and white pictures pertaining to AgEx. Roughly half of these pictures date from 1976; the other half date from 1986 and 1987. Four subject areas comprise the series: livestock, exhibits, entertainment, and dignitaries.

LIVESTOCK

Almost all of the AgEx photos are of prize-winning bull and female cattle. Breeds represented in the photos of 1976 are Angus, Charolais, Chianina, Hereford (Polled and Non-Polled), Holstein, Limousin, and Maine Anjou. Depicted in the photos of 1986 and 1987 are Angus, Aquitaine Blond, Charolais, Hereford (Polled and Non-Polled), Maine Anjou, Saler, Shorthorn, and Simmental.

Sheep are also featured in this series. Included are pictures both of sheep shows and sheep shearing.

EXHIBITS

At the 1976 AgEx were various commercial display booths. Depicted in this series are Kullberg's Furniture, Standard Steel Buildings, Cargill, Rug Doctor, and Linden Trailer Sales and Services Ltd.

ENTERTAINMENT

Entertainment graphics are advertisements for Buddy Knox, a singer who performed at the 1989 AgEx.

DIGNITARIES

Dignitaries depicted in this series are organizers of the fall fair. Also included is the 1976 Hereford Association Queen.

Containing over three hundred images of purebred cattle, this series is valuable for historians of agriculture. By examining these photos, one can ascertain the characteristics of breeds found in western Canada. This series is also useful for historians of agricultural exhibitions. By studying the pictures of Brandon's AgEx, one can determine the nature of fall fairs in western Canada.

Notes:

Part of RG2SF3. Item-level descriptions of the graphics of RG2SF1 through RG2SF4 are located on a searchable database. This database is entitled "Brandon Photographs" and can be read using Microsoft Access. "Brandon Photographs" is located on a 3½ floppy disk entitled "Provincial Exhibition Association of Manitoba fonds Series 9" included in this finding aid. The description of each photograph on this database includes the following information: accession number, title, date, place, physical description, scope and content, notes, creator, and copyright. By searching the database, individual photographs can be located easily. Instructions on how to use the database are in the printed finding aid.

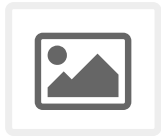
Storage Location: RG 2 Provincial Exhibition of Manitoba Association fonds
RG2SF3 AgEx

Arrangement:

Graphics for RGSF1 through RG2SF4 are located in boxes. Graphics larger than 24 x 35 cm are located in the image mapcase, which is located in the reading room. The graphics are filed chronologically by accession number. The arrangement is as follows:

Provincial Exhibition of Manitoba Association fonds; RG2SF1-RG2SF4; Series 9
Boxes 1 through 15, as follows:

Box 1 EX0001 to EX0125
Box 2 EX0157 to EX0263
Box 3 EX0265 to EX0399
Box 4 EX0400 to EX0499
Box 5 EX0500 to EX0599
Box 6 EX0600 to EX0699
Box 7 EX0700 to EX0799
Box 8 EX0800 to EX0899
Box 9 EX0900 to EX0921
Box 10 EX1000 to EX1099
Box 11 EX1100 to EX1199
Box 12 EX1200 to EX1299
Box 13 EX1300 to EX1399
Box 14 EX1400 to EX1499
Box 15 EX1549 to EX1859



Miscellaneous photographs

<http://archives.brandonu.ca/en/permalink/descriptions4387>

Part Of: RG 2 Provincial Exhibition of Manitoba Association fonds

Description Level: Series

Fonds Number: RG2SF4

Series Number: 4.9

GMD: graphic

Date Range: 1910-1982

Physical Description: 29 photographs and other graphic materials

History /

Biographical:

Members of the Provincial Exhibition Board and the Winter Fair Board created most of the records in this series. The other records were created by R. M. Coleman, Free Lance Photographer, Brandon, Manitoba; Jack DeLorme Photography Limited, Calgary, Alberta; Farmer and Stockman; and Jerrett's Photo, Brandon, Manitoba.

Custodial History:

These records were housed at the PEA offices until ca. 1986, when on a continuing basis they were transferred to the McKee Archives.

Scope and Content:

Series consists of black and white graphics that did not fit easily into Series 1.9, 2.9, or 3.9. Some of the graphics in this series pertain to all three of the fairs; others were placed in this series because it is impossible to determine to which fair they pertain.

Two subject areas comprise this series: animals and dignitaries. Animals represented in this series are horses and cattle. Included are depictions of a man shoeing a horse, an advertisement for a studhorse, and steer shows and sales. Dignitaries represented in this series are men who served on both the Provincial Exhibition Board and the Winter Fair Board.

Notes: Item-level descriptions of the graphics of RG2SF1 through RG2SF4 are located on a searchable database. This database is entitled "Brandon Photographs" and can be read using Microsoft Access. "Brandon Photographs" is located on a 3½ floppy disk entitled "Provincial Exhibition Association of Manitoba fonds Series 9" included in this finding aid. The description of each photograph on this database includes the following information: accession number, title, date, place, physical description, scope and content, notes, creator, and copyright. By searching the database, individual photographs can be located easily. Instruction on how to use the database are in the printed finding aid.

Storage Location: RG 2 Provincial Exhibition of Manitoba Association fonds
RG2SF4 Miscellaneous

Arrangement:

Graphics for RG2SF1 through RG2SF4 are located in boxes. Graphics larger than 24 x 35 cm are located in the image mapcase, which is located in the reading room. The graphics are filed chronologically by accession number. The arrangement is as follows:

Provincial Exhibition of Manitoba Association fonds; RG2SF1-RG2SF4; Series 9
Boxes 1 through 15, as follows:

Box 1 EX0001 to EX0125
Box 2 EX0157 to EX0263
Box 3 EX0265 to EX0399
Box 4 EX0400 to EX0499
Box 5 EX0500 to EX0599
Box 6 EX0600 to EX0699
Box 7 EX0700 to EX0799
Box 8 EX0800 to EX0899
Box 9 EX0900 to EX0921
Box 10 EX1000 to EX1099
Box 11 EX1100 to EX1199
Box 12 EX1200 to EX1299
Box 13 EX1300 to EX1399
Box 14 EX1400 to EX1499
Box 15 EX1549 to EX1859



Aerial views and campus photographs

<http://archives.brandonu.ca/en/permalink/descriptions6>

Part Of: BUPC 2 Campus buildings

Description Level: Sub-series

Series Number: 2.1

GMD: graphic

Date Range: c.1920s; c.1950s - c.2000

Physical Description: 146 photographs

History /

Biographical:

Aerial photographs of the campus were generally commissioned by the College/University to record important milestones, such as centennials, changes in status, and building projects. The general campus photographs were placed in this sub-series because the composition of the images made it difficult to place them with individual buildings.

Scope and Content:

Sub-series consists of photographs of the Brandon College and Brandon University campus.

Name Access: Flora Cowan Residence

Subject Access: Aerial views Brandon College



Baldur, Manitoba

<http://archives.brandonu.ca/en/permalink/descriptions14394>

Part Of: James Wall collection

Description Level: Item

Series Number: Box 1

Item Number: 12-2004.1

Accession Number: 12-2004

GMD: graphic

Date Range: [1903]

Physical Description: 8" x 6" (b/w)

Material Details: On matting (12" x 10")

Physical Condition: good

Custodial History:

See collection level description for the James Douglas Wall collection.

Scope and Content:

Image shows a view of Baldur, MB with a body of water and train tracks in the foreground.

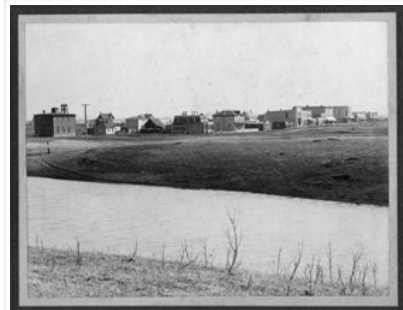
Notes: 12-2004.15 indicates the water was caused by spring flooding.

Subject Access: rural images

Location Copy: Same as 12-2004.15

Storage Location: 2004 accessions

Images





Manitoba threshers

<http://archives.brandonu.ca/en/permalink/descriptions14397>

Part Of: James Wall collection
Description Level: Item
Series Number: Box 2
Item Number: 12-2004.4
Accession Number: 12-2004
GMD: graphic
Date Range: [1900-1904]
Physical Description: 6.75" x 4.75" (b/w)
Material Details: On matting (9.75" x 7.75")
Physical Condition: good

Custodial History:

See collection level description for the James Douglas Wall collection.

Scope and Content:

Image of men in a field, likely a threshing crew, with work horses and farm machinery.

Subject Access: rural images

Storage Location: 2004 accessions

Images





Baldur, Manitoba - snow on the ground

<http://archives.brandonu.ca/en/permalink/descriptions14406>

Part Of: James Wall collection

Description Level: Item

Series Number: Box 1

Item Number: 12-2004.13

Accession Number: 12-2004

GMD: graphic

Date Range: September 13, 1903

Physical Description: 6.6" x 4.75" (b/w)

Material Details: On matting (9" x 7")

Custodial History:

See collection level description for the James Douglas Wall collection.

Scope and Content:

Image of Baldur, MB with a field in the foreground. The field has a light snow covering and stacks of hay. Baldur is in the background.

Subject Access: rural images

Storage Location: 2004 accessions

Images





Baldur, Manitoba from southwest

<http://archives.brandonu.ca/en/permalink/descriptions14407>

Part Of: James Wall collection

Description Level: Item

Series Number: Box 1

Item Number: 12-2004.14

Accession Number: 12-2004

GMD: graphic

Date Range: 1903

Physical Description: 6.6" x 4.75" (b/w)

Material Details: On matting (8.75" x 7")

Physical Condition: good

Custodial History:

See collection level description for the James Douglas Wall collection.

Scope and Content:

Image of Baldur, MB, including grain elevators.

Subject Access: rural images

Storage Location: 2004 accessions

Images





Baldur, Manitoba spring flood

<http://archives.brandonu.ca/en/permalink/descriptions14408>

Part Of: James Wall collection

Description Level: Item

Series Number: Box 1

Item Number: 12-2004.15

Accession Number: 12-2004

GMD: graphic

Date Range: 1903

Physical Description: 8" x 6" (b/w)

Material Details: On matting (12" x 10")

Physical Condition: good

Custodial History:

See collection level description for the James Douglas Wall collection.

Scope and Content:

Image of Baldur, MB, with a body of water, possibly from spring flooding, in the foreground.

Subject Access: rural images

Location Copy: Same as 12-2004.1

Storage Location: 2004 accessions

Images

