

S. J. McKee Archives



Fred McGuinness weighing beehive at Christmas Tree Farm

<http://archives.brandonu.ca/en/permalink/descriptions13896>

Part Of: Fred McGuinness collection

Description Level: Item

Series Number: McG 9

Item Number: 20-2009.207

Accession Number: 20-2009

GMD: graphic

Date Range: 1980s

Physical Description: 4.75" x 3.25" (b/w)

Scope and Content:

Photograph shows Fred McGuinness weighing a beehive at Christmas Tree Farm, Section 17.

Notes: Writing on back of photograph reads: McG weighing a hive during a rearch program

Name Access: Fred McGuinness
Christmas Tree Farm

Subject Access: farming
beehives
apiaries

Storage Location: RG 5 photograph storage drawer 2 (hanging photos)

Arrangement:

From 20-2009 #4 plastic envelope #1

Images





Christmas Tree Farm - road

<http://archives.brandonu.ca/en/permalink/descriptions14182>

Part Of: Fred McGuinness collection

Description Level: Item

Series Number: McG 9

Item Number: 1-2015.251

Accession Number: 1-2015

GMD: graphic

Date Range: [1980s-1990s]

Physical Description: 5.25 " x 3.5" (colour)

History /

Biographical:

Fred McGuinness is popularly known for his work as the prairie essayist for CBC Radio's Morningside with Peter Gzowski, a position he held for 17 years. Many of McGuinness' Morningside essays were autobiographical in nature. He often reported about life on Christmas Tree Farm, a section of land where he and his wife, Christine, built their dream home in the late 1970s. The couple planted a Christmas tree farm on the property and Christine maintained an extensive kitchen garden, while Fred tended honey bees. Life on the farm made its way into radiobroadcasts, Neighborly News columns, and the book "Letters from Section 17: A Collection of Morningside Essays" (Winnipeg: Great Plains Publishing, 1999).

Scope and Content:

Photograph shows a view of the road along the McGuinness property, Christmas Tree Farm, Section 17.

Notes: See McG 9 1-2015.249 corresponding negative #4

Name Access: Christmas Tree Farm

Section 17

Subject Access: residences

farms

trees

winter

Storage Location: RG 5 photograph storage drawer 2 (hanging photos)

Arrangement:

RR #8 photos

Images





Christmas Tree Farm contact sheet

<http://archives.brandonu.ca/en/permalink/descriptions14179>

Part Of: Fred McGuinness collection

Description Level: Item

Series Number: McG 9

Item Number: 1-2015.248

Accession Number: 1-2015

GMD: graphic

Date Range: [1980s-1990s]

Physical Description: 10" x 8" (b/w)

History /

Biographical:

Fred McGuinness is popularly known for his work as the prairie essayist for CBC Radio's Morningside with Peter Gzowski, a position he held for 17 years. Many of McGuinness' Morningside essays were autobiographical in nature. He often reported about life on Christmas Tree Farm, a section of land where he and his wife, Christine, built their dream home in the late 1970s. The couple planted a Christmas tree farm on the property and Christine maintained an extensive kitchen garden, while Fred tended honey bees. Life on the farm made its way into radiobroadcasts, Neighborly News columns, and the book "Letters from Section 17: A Collection of Morningside Essays" (Winnipeg: Great Plains Publishing, 1999).

Scope and Content:

Contact sheet shows scenes from Christmas Tree Farm including: honey jars, the McGuinness personal library, home, and planted trees

Name Access: Christmas Tree Farm

Section 17

Subject Access: residences

farms

trees

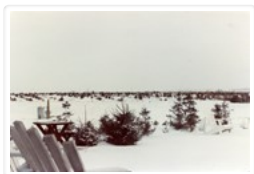
Storage Location: RG 5 photograph storage drawer 2 (hanging photos)

Arrangement:

RR #8 photos

Images





Christmas Tree Farm - back yard and plantings

<http://archives.brandonu.ca/en/permalink/descriptions14183>

Part Of: Fred McGuinness collection

Description Level: Item

Series Number: McG 9

Item Number: 1-2015.252

Accession Number: 1-2015

GMD: graphic

Date Range: [1980s-1990s]

Physical Description: 5.25 " x 3.5" (colour)

History /

Biographical:

Fred McGuinness is popularly known for his work as the prairie essayist for CBC Radio's Morningside with Peter Gzowski, a position he held for 17 years. Many of McGuinness' Morningside essays were autobiographical in nature. He often reported about life on Christmas Tree Farm, a section of land where he and his wife, Christine, built their dream home in the late 1970s. The couple planted a Christmas tree farm on the property and Christine maintained an extensive kitchen garden, while Fred tended honey bees. Life on the farm made its way into radiobroadcasts, Neighborly News columns, and the book "Letters from Section 17: A Collection of Morningside Essays" (Winnipeg: Great Plains Publishing, 1999).

Scope and Content:

Photograph shows a view of the backyard of the McGuinness property, Christmas Tree Farm, Section 17. Christmas tree plantings can be seen in the background.

Notes: See McG 9 1-2015.249 corresponding negative #1

Name Access: Christmas Tree Farm

Section 17

Subject Access: residences

farms

trees

winter

Storage Location: RG 5 photograph storage drawer 2 (hanging photos)

Arrangement:

RR #8 photos

Images





Christmas Tree Farm - house, closeup

<http://archives.brandonu.ca/en/permalink/descriptions14184>

Part Of: Fred McGuinness collection

Description Level: Item

Series Number: McG 9

Item Number: 1-2015.253

Accession Number: 1-2015

GMD: graphic

Date Range: [1980s-1990s]

Physical Description: 5.25 " x 3.5" (colour)

History /

Biographical:

Fred McGuinness is popularly known for his work as the prairie essayist for CBC Radio's Morningside with Peter Gzowski, a position he held for 17 years. Many of McGuinness' Morningside essays were autobiographical in nature. He often reported about life on Christmas Tree Farm, a section of land where he and his wife, Christine, built their dream home in the late 1970s. The couple planted a Christmas tree farm on the property and Christine maintained an extensive kitchen garden, while Fred tended honey bees. Life on the farm made its way into radiobroadcasts, Neighborly News columns, and the book "Letters from Section 17: A Collection of Morningside Essays" (Winnipeg: Great Plains Publishing, 1999).

Scope and Content:

Photograph shows an overview of the house on the McGuinness property, Christmas Tree Farm, Section 17.

Notes: See McG 9 1-2015.249 corresponding negative #7

Name Access: Christmas Tree Farm

Section 17

Subject Access: residences

farms

trees

winter

building exteriors

Storage Location: RG 5 photograph storage drawer 2 (hanging photos)

Arrangement:

RR #8 photos

Images





Christmas Tree Farm - house, overview

<http://archives.brandonu.ca/en/permalink/descriptions14185>

Part Of: Fred McGuinness collection

Description Level: Item

Series Number: McG 9

Item Number: 1-2015.254

Accession Number: 1-2015

GMD: graphic

Date Range: [1980s-1990s]

Physical Description: 5.25 " x 3.5" (colour)

History /

Biographical:

Fred McGuinness is popularly known for his work as the prairie essayist for CBC Radio's Morningside with Peter Gzowski, a position he held for 17 years. Many of McGuinness' Morningside essays were autobiographical in nature. He often reported about life on Christmas Tree Farm, a section of land where he and his wife, Christine, built their dream home in the late 1970s. The couple planted a Christmas tree farm on the property and Christine maintained an extensive kitchen garden, while Fred tended honey bees. Life on the farm made its way into radiobroadcasts, Neighborly News columns, and the book "Letters from Section 17: A Collection of Morningside Essays" (Winnipeg: Great Plains Publishing, 1999).

Scope and Content:

Photograph shows an overview of the house on the McGuinness property, Christmas Tree Farm, Section 17.

Notes: See McG 9 1-2015.249 corresponding negative #12

Name Access: Christmas Tree Farm

Section 17

Subject Access: residences

farms

trees

winter

building exteriors

Storage Location: RG 5 photograph storage drawer 2 (hanging photos)

Arrangement:

RR #8 photos

Images





Christmas Tree Farm - house, overview

<http://archives.brandonu.ca/en/permalink/descriptions14186>

Part Of: Fred McGuinness collection

Description Level: Item

Series Number: McG 9

Item Number: 1-2015.255

Accession Number: 1-2015

GMD: graphic

Date Range: [1980s-1990s]

Physical Description: 5.25 " x 3.5" (colour)

History /

Biographical:

Fred McGuinness is popularly known for his work as the prairie essayist for CBC Radio's Morningside with Peter Gzowski, a position he held for 17 years. Many of McGuinness' Morningside essays were autobiographical in nature. He often reported about life on Christmas Tree Farm, a section of land where he and his wife, Christine, built their dream home in the late 1970s. The couple planted a Christmas tree farm on the property and Christine maintained an extensive kitchen garden, while Fred tended honey bees. Life on the farm made its way into radiobroadcasts, Neighborly News columns, and the book "Letters from Section 17: A Collection of Morningside Essays" (Winnipeg: Great Plains Publishing, 1999).

Scope and Content:

Photograph shows an overview of the house on the McGuinness property, Christmas Tree Farm, Section 17.

Notes: See McG 9 1-2015.249 corresponding negatives #16 to #22

Name Access: Christmas Tree Farm

Section 17

Subject Access: residences

farms

trees

winter

building exteriors

Storage Location: RG 5 photograph storage drawer 2 (hanging photos)

Arrangement:

RR #8 photos

Images





Christmas Tree Farm - back of house

<http://archives.brandonu.ca/en/permalink/descriptions14187>

Part Of: Fred McGuinness collection

Description Level: Item

Series Number: McG 9

Item Number: 1-2015.256

Accession Number: 1-2015

GMD: graphic

Date Range: [1980s-1990s]

Physical Description: 5.25 " x 3.5" (colour)

History /

Biographical:

Fred McGuinness is popularly known for his work as the prairie essayist for CBC Radio's Morningside with Peter Gzowski, a position he held for 17 years. Many of McGuinness' Morningside essays were autobiographical in nature. He often reported about life on Christmas Tree Farm, a section of land where he and his wife, Christine, built their dream home in the late 1970s. The couple planted a Christmas tree farm on the property and Christine maintained an extensive kitchen garden, while Fred tended honey bees. Life on the farm made its way into radiobroadcasts, Neighborly News columns, and the book "Letters from Section 17: A Collection of Morningside Essays" (Winnipeg: Great Plains Publishing, 1999).

Scope and Content:

Photograph shows an overview of the house on the McGuinness property, Christmas Tree Farm, Section 17.

Notes: Negative accompanies photo

Name Access: Christmas Tree Farm

Section 17

Subject Access: residences

farms

trees

winter

building exteriors

Storage Location: RG 5 photograph storage drawer 2 (hanging photos)

Arrangement:

RR #8 photos

Images





Christmas Tree Farm negative set 1, frames 0 to 26

<http://archives.brandonu.ca/en/permalink/descriptions14180>

Part Of: Fred McGuinness collection

Description Level: Item

Series Number: McG 9

Item Number: 1-2015.249

Accession Number: 1-2015

GMD: graphic

Date Range: [1980s-1990s]

Physical Description: 1.5" x 1.5" (b/w)

Material Details: negatives

History /

Biographical:

Fred McGuinness is popularly known for his work as the prairie essayist for CBC Radio's Morningside with Peter Gzowski, a position he held for 17 years. Many of McGuinness' Morningside essays were autobiographical in nature. He often reported about life on Christmas Tree Farm, a section of land where he and his wife, Christine, built their dream home in the late 1970s. The couple planted a Christmas tree farm on the property and Christine maintained an extensive kitchen garden, while Fred tended honey bees. Life on the farm made its way into radiobroadcasts, Neighborly News columns, and the book "Letters from Section 17: A Collection of Morningside Essays" (Winnipeg: Great Plains Publishing, 1999).

Scope and Content:

Set consists of 27 negatives showing different views of the McGuinness property, Christmas Tree Farm, Section 17

Name Access: Christmas Tree Farm

Section 17

Subject Access: residences

farms

trees

Storage Location: RG 5 photograph storage drawer 2 (hanging photos)

Arrangement:

RR #8 photos

Images





Christmas Tree Farm negative set 2, frames 1A to 8A

<http://archives.brandonu.ca/en/permalink/descriptions14181>

Part Of: Fred McGuinness collection

Description Level: Item

Series Number: McG 9

Item Number: 1-2015.250

Accession Number: 1-2015

GMD: graphic

Date Range: [1980s-1990s]

Physical Description: 1.5" x 1.5" (b/w)

Material Details: negatives

History /

Biographical:

Fred McGuinness is popularly known for his work as the prairie essayist for CBC Radio's Morningside with Peter Gzowski, a position he held for 17 years. Many of McGuinness' Morningside essays were autobiographical in nature. He often reported about life on Christmas Tree Farm, a section of land where he and his wife, Christine, built their dream home in the late 1970s. The couple planted a Christmas tree farm on the property and Christine maintained an extensive kitchen garden, while Fred tended honey bees. Life on the farm made its way into radiobroadcasts, Neighborly News columns, and the book "Letters from Section 17: A Collection of Morningside Essays" (Winnipeg: Great Plains Publishing, 1999).

Scope and Content:

Set consists of 8 negatives showing a delivery of saplings to the McGuinness property, Christmas Tree Farm, Section 17

Name Access: Christmas Tree Farm
Section 17
Brandon Building Movers Ltd

Subject Access: residences
farms
trees
Transportation

Storage Location: RG 5 photograph storage drawer 2 (hanging photos)

Arrangement:

RR #8 photos



Christmas Tree Farm negative set 3, frames 1A to 13A

<http://archives.brandonu.ca/en/permalink/descriptions14190>

Part Of: Fred McGuinness collection

Description Level: Item

Series Number: McG 9

Item Number: 1-2015.259

Accession Number: 1-2015

GMD: graphic
Date Range: [1980s]
Physical Description: 1.5 " x 1.5" (b/w)
Material Details: negatives

History /

Biographical:

Fred McGuinness is popularly known for his work as the prairie essayist for CBC Radio's Morningside with Peter Gzowski, a position he held for 17 years. Many of McGuinness' Morningside essays were autobiographical in nature. He often reported about life on Christmas Tree Farm, a section of land where he and his wife, Christine, built their dream home in the late 1970s. The couple planted a Christmas tree farm on the property and Christine maintained an extensive kitchen garden, while Fred tended honey bees. Life on the farm made its way into radiobroadcasts, Neighborly News columns, and the book "Letters from Section 17: A Collection of Morningside Essays" (Winnipeg: Great Plains Publishing, 1999).

Scope and Content:

Set consists of 13 negatives showing work being conducted on the McGuinness property, Christmas Tree Farm, Section 17. The first 12 negatives show the McGuinness family planting with their tractor and the last negative shows a woman working on a swimming pool liner.

Notes: McGuinness drafted a manuscript, titled "Hole in the Ground," about the family pool on Section 17. It was one manuscript McGuinness was re-tooling before he passed away in 2011.

Name Access: Section 17
Christmas Tree Farm

Subject Access: Horticulture
farming
Tractors

Storage Location: RG 5 photograph storage drawer 2 (hanging photos)

Arrangement:

Cigar boxes

Images





Christmas Tree Farm - landscape

<http://archives.brandonu.ca/en/permalink/descriptions14189>

Part Of: Fred McGuinness collection

Description Level: Item

Series Number: McG 9

Item Number: 1-2015.258

Accession Number: 1-2015

GMD: graphic

Date Range: [1980s-1990s]

Physical Description: 5.25 " x 3.5" (colour)

History /

Biographical:

Fred McGuinness is popularly known for his work as the prairie essayist for CBC Radio's Morningside with Peter Gzowski, a position he held for 17 years. Many of McGuinness' Morningside essays were autobiographical in nature. He often reported about life on Christmas Tree Farm, a section of land where he and his wife, Christine, built their dream home in the late 1970s. The couple planted a Christmas tree farm on the property and Christine maintained an extensive kitchen garden, while Fred tended honey bees. Life on the farm made its way into radiobroadcasts, Neighborly News columns, and the book "Letters from Section 17: A Collection of Morningside Essays" (Winnipeg: Great Plains Publishing, 1999).

Scope and Content:

Photograph shows a landscape view from the McGuinness property, Christmas Tree Farm, Section 17.

Notes: Negative accompanies photo

Name Access: Christmas Tree Farm

Section 17

Subject Access: residences

farms

winter

landscapes

Storage Location: RG 5 photograph storage drawer 2 (hanging photos)

Arrangement:

RR #8 photos

Images





Christmas Tree Farm - aerial view

<http://archives.brandonu.ca/en/permalink/descriptions13964>

Part Of: Fred McGuinness collection

Description Level: Item

Series Number: McG 9

Item Number: 1-2015.36

Accession Number: 1-2015

GMD: graphic

Date Range: [2009]

Physical Description: 11" x 8.5" (colour)

Material Details: reproduction

Scope and Content:

Colour photocopy shows an aerial view of the Fred McGuinness property - Christmas Tree Farm - on section 17.

Name Access: Christmas Tree Farm

Subject Access: residences

aerial photographs

farms

Storage Location: McGuinness oversize storage drawer (1-2015)

Arrangement:

From RR #3 family letters

Images



Christmas Tree Farm - beehive scale

<http://archives.brandonu.ca/en/permalink/descriptions14188>

Part Of: Fred McGuinness collection

Description Level: Item

Series Number: McG 9

Item Number: 1-2015.257

Accession Number: 1-2015

GMD: graphic

Date Range: [1980s-1990s]

Physical Description: 5.25 " x 3.5" (colour)

History /

Biographical:

Fred McGuinness is popularly known for his work as the prairie essayist for CBC Radio's Morningside with Peter Gzowski, a position he held for 17 years. Many of McGuinness' Morningside essays were autobiographical in nature. He often reported about life on Christmas Tree Farm, a section of land where he and his wife, Christine, built their dream home in the late 1970s. The couple planted a Christmas tree farm on the property and Christine maintained an extensive kitchen garden, while Fred tended honey bees. Life on the farm made its way into radiobroadcasts, Neighborly News columns, and the book "Letters from Section 17: A Collection of Morningside Essays" (Winnipeg: Great Plains Publishing, 1999).

Scope and Content:

Photograph shows beehive scale on the McGuinness property, Christmas Tree Farm, Section 17.

Notes: Negative accompanies photo

Name Access: Christmas Tree Farm

Section 17

Subject Access: residences

farms

winter

beehives

apiaries

Storage Location: RG 5 photograph storage drawer 2 (hanging photos)

Arrangement:

RR #8 photos

Images



Fred McGuinness correspondence

<http://archives.brandonu.ca/en/permalink/descriptions13657>

Other Title Info: Title based on the contents of the subseries

Part Of: Fred McGuinness collection

Description Level: Sub-series

Series Number: McG 1.2

Document Not
Available

(Copyright
Restrictions)

Accession Number: 1-2015
GMD: textual records
Date Range: c. 1910 - 2010
Physical Description: Approximately 36 cm of textual records
1 artifact

History /

Biographical:

See collection level description for history/biography information on Frederick George McGuinness.

Custodial History:

Accession 1-2015 contains records created and collected over the course of McGuinness' career as a newspaper journalist and freelance writer. The Estate of Fred McGuinness donated the materials to the SJ McKee Archives circa 2011. The Archives accessioned the records in 2015.

Scope and Content:

Subseries consists of records created and collected by Fred McGuinness during his years in the Canadian navy, college, federal government (Unemployment Insurance Commission), Saskatchewan government (Saskatchewan Jubilee), and as a journalist, editor, and freelance writer.

The papers and letters include materials from some members of the McGuinness family who assisted McGuinness with his research, as well as reader correspondence and materials from workshop participants. Readers of McGuinness' columns often reminisced about Brandon's local history and enclosed newspapers clippings, photographs, and pamphlets with their correspondence. Participants from his memoir writing workshops submitted their personal or family memoirs for McGuinness to review, provide feedback, or add to his collection.

Records in the subseries consist of correspondence (letters, e-mail communications, facsimiles, invitations, telegrams), newspaper clippings, programmes, ticket stubs. There is a Medicine Hat News logo patch located within File 10 1955-1965 Medicine Hat News.

Notes: In the file level inventories, square brackets at end of file names reference the original location of the file in the unprocessed Fred McGuinness collection. The original location is also noted on the front of each file folder.

Accruals: Closed
Finding Aid: File level inventory is available
Storage Location: 2015 accessions
Related Material: John Everitt collection

Clarence Hopkin collection
Lawrence Stuckey collection
Jack Stothard collection
William Wallace papers

It is possible research and additional correspondence pertaining to McGuinness' columns and research materials may be found in Personal papers (McG 1.1), Newspaper career (McG 2), Freelance (McG 3), Broadcasts, talks and workshops (McG 6). Photographs were pulled and added to McGuinness photographic collection (McG 9)

Arrangement:

Arrangement was artificially created by the Archives. Subseries has been re-arranged according to publication period.

Documents

Document Not
Available

(Copyright
Restrictions)

McG 1_2 Fred
McGuinness
correspondence
inventory.pdf

 Read PDF

 Download PDF



Fred McGuinness headshot

<http://archives.brandonu.ca/en/permalink/descriptions13893>

Part Of: Fred McGuinness collection
Creator: Photographer: Sandy Black
Description Level: Item
Series Number: McG 9
Item Number: 20-2009.204
Accession Number: 20-2009
GMD: graphic
Date Range: 1980s
Physical Description: 5" x 3.5" (b/w)
Physical Condition: Photograph is stamped stamped on back

Scope and Content:

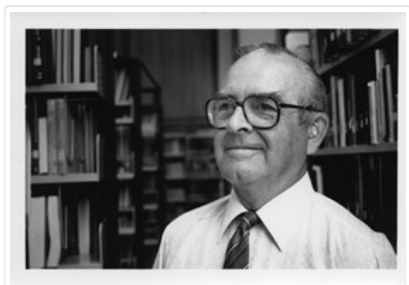
Photograph shows Fred McGuinness standing in the stacks at Brandon University's John E. Robbins Library

Notes: Writing on back of photograph reads: Photography by Sandy Black
Name Access: Fred McGuinness
Subject Access: portraits
Storage Location: RG 5 photograph storage drawer 2 (hanging photos)

Arrangement:

From 20-2009 #4 plastic envelope #1

Images





Fred McGuinness headshot

<http://archives.brandonu.ca/en/permalink/descriptions13894>

Part Of: Fred McGuinness collection

Description Level: Item

Series Number: McG 9

Item Number: 20-2009.204

Accession Number: 20-2009

GMD: graphic

Date Range: 1952

Physical Description: 2.25" x 3.25" (b/w)

Scope and Content:

Photograph is a headshot of Fred McGuinness. Image was taken for the Saskatchewan Golden Jubilee Committee.

Notes: Writing on back of photograph reads: Reporting for Duty, Executive Director, Saskatchewan Golden Jubilee Committee, 1952

Name Access: Fred McGuinness

Saskatchewan Golden Jubilee

Subject Access: portraits

Storage Location: RG 5 photograph storage drawer 2 (hanging photos)

Arrangement:

From 20-2009 #4 plastic envelope #1

Images





Young Fred McGuinness

<http://archives.brandonu.ca/en/permalink/descriptions13974>

Part Of: Fred McGuinness collection

Creator: Leila McDiarmid Leck

Description Level: Item

Series Number: McG 9

Item Number: 1-2015.45

Accession Number: 1-2015

GMD: graphic

Date Range: 1936

Physical Description: 2.75" x 4.5" (b/w)

Custodial History:

Photograph sent to Fred McGuinness from Leila McDiarmid Leck of Mission, BC, on 08 Feb 1983 in response to his Park School column (see F.A. Rosser, "Sunbeams – Park School reminiscences from a far away friends, Brandon Sun 25 Jan 1983)

Scope and Content:

Photograph shows a young boy in a gadsby cap bending over a box camera. Behind him are the steps and porch to a residential home.

Notes: Back of the photograph is stamped: Jerrett's June 2 1936 Photo-Service
Brandon

Name Access: Fred McGuinness

Storage Location: RG 5 photograph storage drawer 2 (hanging photos)

Arrangement:

McG RR #1 "diary" (see McG 1.2 File 29)

Images





Fred McGuinness in uniform

<http://archives.brandonu.ca/en/permalink/descriptions14043>

Part Of: Fred McGuinness collection

Description Level: Item

Series Number: McG 9

Item Number: 1-2015.113

Accession Number: 1-2015

GMD: graphic

Date Range: [1940s]

Physical Description: 2.75" x 4.25" (b/w)

Scope and Content:

Photograph shows the McGuinness in his navy uniform on the deck of a ship, possibly the HMCS Alachasse.

Name Access: Fred McGuinness
Frederick George McGuinness
Royal Canadian Navy

Subject Access: World War II
uniforms
military
military people & associations
military personnel
ships

Storage Location: RG 5 photograph storage drawer 2 (hanging photos)

Arrangement:

BR #3 Family pictures

Images





Fred McGuinness in college?

<http://archives.brandonu.ca/en/permalink/descriptions14050>

Part Of: Fred McGuinness collection

Description Level: Item

Series Number: McG 9

Item Number: 1-2015.120

Accession Number: 1-2015

GMD: graphic

Date Range: [1940s]

Physical Description: 3.5" x 2.5" (b/w)

Scope and Content:

Photograph shows Fred McGuinness posing with another man, possibly a fellow student at the University of Manitoba.

Name Access: Fred McGuinness

Frederick George McGuinness

Storage Location: RG 5 photograph storage drawer 2 (hanging photos)

Arrangement:

BR #5 Family pictures

Images

