

S. J. McKee Archives



Fred McGuinness weighing beehive at Christmas Tree Farm

<http://archives.brandonu.ca/en/permalink/descriptions13896>

Part Of: Fred McGuinness collection

Description Level: Item

Series Number: McG 9

Item Number: 20-2009.207

Accession Number: 20-2009

GMD: graphic

Date Range: 1980s

Physical Description: 4.75" x 3.25" (b/w)

Scope and Content:

Photograph shows Fred McGuinness weighing a beehive at Christmas Tree Farm, Section 17.

Notes: Writing on back of photograph reads: McG weighing a hive during a rearch program

Name Access: Fred McGuinness
Christmas Tree Farm

Subject Access: farming
beehives
apiaries

Storage Location: RG 5 photograph storage drawer 2 (hanging photos)

Arrangement:

From 20-2009 #4 plastic envelope #1

Images





Christmas Tree Farm - road

<http://archives.brandonu.ca/en/permalink/descriptions14182>

Part Of: Fred McGuinness collection

Description Level: Item

Series Number: McG 9

Item Number: 1-2015.251

Accession Number: 1-2015

GMD: graphic

Date Range: [1980s-1990s]

Physical Description: 5.25 " x 3.5" (colour)

History /

Biographical:

Fred McGuinness is popularly known for his work as the prairie essayist for CBC Radio's Morningside with Peter Gzowski, a position he held for 17 years. Many of McGuinness' Morningside essays were autobiographical in nature. He often reported about life on Christmas Tree Farm, a section of land where he and his wife, Christine, built their dream home in the late 1970s. The couple planted a Christmas tree farm on the property and Christine maintained an extensive kitchen garden, while Fred tended honey bees. Life on the farm made its way into radiobroadcasts, Neighborly News columns, and the book "Letters from Section 17: A Collection of Morningside Essays" (Winnipeg: Great Plains Publishing, 1999).

Scope and Content:

Photograph shows a view of the road along the McGuinness property, Christmas Tree Farm, Section 17.

Notes: See McG 9 1-2015.249 corresponding negative #4

Name Access: Christmas Tree Farm

Section 17

Subject Access: residences

farms

trees

winter

Storage Location: RG 5 photograph storage drawer 2 (hanging photos)

Arrangement:

RR #8 photos

Images





Christmas Tree Farm contact sheet

<http://archives.brandonu.ca/en/permalink/descriptions14179>

Part Of: Fred McGuinness collection

Description Level: Item

Series Number: McG 9

Item Number: 1-2015.248

Accession Number: 1-2015

GMD: graphic

Date Range: [1980s-1990s]

Physical Description: 10" x 8" (b/w)

History /

Biographical:

Fred McGuinness is popularly known for his work as the prairie essayist for CBC Radio's Morningside with Peter Gzowski, a position he held for 17 years. Many of McGuinness' Morningside essays were autobiographical in nature. He often reported about life on Christmas Tree Farm, a section of land where he and his wife, Christine, built their dream home in the late 1970s. The couple planted a Christmas tree farm on the property and Christine maintained an extensive kitchen garden, while Fred tended honey bees. Life on the farm made its way into radiobroadcasts, Neighborly News columns, and the book "Letters from Section 17: A Collection of Morningside Essays" (Winnipeg: Great Plains Publishing, 1999).

Scope and Content:

Contact sheet shows scenes from Christmas Tree Farm including: honey jars, the McGuinness personal library, home, and planted trees

Name Access: Christmas Tree Farm

Section 17

Subject Access: residences

farms

trees

Storage Location: RG 5 photograph storage drawer 2 (hanging photos)

Arrangement:

RR #8 photos

Images





Christmas Tree Farm - back yard and plantings

<http://archives.brandonu.ca/en/permalink/descriptions14183>

Part Of: Fred McGuinness collection

Description Level: Item

Series Number: McG 9

Item Number: 1-2015.252

Accession Number: 1-2015

GMD: graphic

Date Range: [1980s-1990s]

Physical Description: 5.25 " x 3.5" (colour)

History /

Biographical:

Fred McGuinness is popularly known for his work as the prairie essayist for CBC Radio's Morningside with Peter Gzowski, a position he held for 17 years. Many of McGuinness' Morningside essays were autobiographical in nature. He often reported about life on Christmas Tree Farm, a section of land where he and his wife, Christine, built their dream home in the late 1970s. The couple planted a Christmas tree farm on the property and Christine maintained an extensive kitchen garden, while Fred tended honey bees. Life on the farm made its way into radiobroadcasts, Neighborly News columns, and the book "Letters from Section 17: A Collection of Morningside Essays" (Winnipeg: Great Plains Publishing, 1999).

Scope and Content:

Photograph shows a view of the backyard of the McGuinness property, Christmas Tree Farm, Section 17. Christmas tree plantings can be seen in the background.

Notes: See McG 9 1-2015.249 corresponding negative #1

Name Access: Christmas Tree Farm

Section 17

Subject Access: residences

farms

trees

winter

Storage Location: RG 5 photograph storage drawer 2 (hanging photos)

Arrangement:

RR #8 photos

Images





Christmas Tree Farm - house, closeup

<http://archives.brandonu.ca/en/permalink/descriptions14184>

Part Of: Fred McGuinness collection

Description Level: Item

Series Number: McG 9

Item Number: 1-2015.253

Accession Number: 1-2015

GMD: graphic

Date Range: [1980s-1990s]

Physical Description: 5.25 " x 3.5" (colour)

History /

Biographical:

Fred McGuinness is popularly known for his work as the prairie essayist for CBC Radio's Morningside with Peter Gzowski, a position he held for 17 years. Many of McGuinness' Morningside essays were autobiographical in nature. He often reported about life on Christmas Tree Farm, a section of land where he and his wife, Christine, built their dream home in the late 1970s. The couple planted a Christmas tree farm on the property and Christine maintained an extensive kitchen garden, while Fred tended honey bees. Life on the farm made its way into radiobroadcasts, Neighborly News columns, and the book "Letters from Section 17: A Collection of Morningside Essays" (Winnipeg: Great Plains Publishing, 1999).

Scope and Content:

Photograph shows an overview of the house on the McGuinness property, Christmas Tree Farm, Section 17.

Notes: See McG 9 1-2015.249 corresponding negative #7

Name Access: Christmas Tree Farm

Section 17

Subject Access: residences

farms

trees

winter

building exteriors

Storage Location: RG 5 photograph storage drawer 2 (hanging photos)

Arrangement:

RR #8 photos

Images





Christmas Tree Farm - house, overview

<http://archives.brandonu.ca/en/permalink/descriptions14185>

Part Of: Fred McGuinness collection

Description Level: Item

Series Number: McG 9

Item Number: 1-2015.254

Accession Number: 1-2015

GMD: graphic

Date Range: [1980s-1990s]

Physical Description: 5.25 " x 3.5" (colour)

History /

Biographical:

Fred McGuinness is popularly known for his work as the prairie essayist for CBC Radio's Morningside with Peter Gzowski, a position he held for 17 years. Many of McGuinness' Morningside essays were autobiographical in nature. He often reported about life on Christmas Tree Farm, a section of land where he and his wife, Christine, built their dream home in the late 1970s. The couple planted a Christmas tree farm on the property and Christine maintained an extensive kitchen garden, while Fred tended honey bees. Life on the farm made its way into radiobroadcasts, Neighborly News columns, and the book "Letters from Section 17: A Collection of Morningside Essays" (Winnipeg: Great Plains Publishing, 1999).

Scope and Content:

Photograph shows an overview of the house on the McGuinness property, Christmas Tree Farm, Section 17.

Notes: See McG 9 1-2015.249 corresponding negative #12

Name Access: Christmas Tree Farm

Section 17

Subject Access: residences

farms

trees

winter

building exteriors

Storage Location: RG 5 photograph storage drawer 2 (hanging photos)

Arrangement:

RR #8 photos

Images





Christmas Tree Farm - house, overview

<http://archives.brandonu.ca/en/permalink/descriptions14186>

Part Of: Fred McGuinness collection

Description Level: Item

Series Number: McG 9

Item Number: 1-2015.255

Accession Number: 1-2015

GMD: graphic

Date Range: [1980s-1990s]

Physical Description: 5.25 " x 3.5" (colour)

History /

Biographical:

Fred McGuinness is popularly known for his work as the prairie essayist for CBC Radio's Morningside with Peter Gzowski, a position he held for 17 years. Many of McGuinness' Morningside essays were autobiographical in nature. He often reported about life on Christmas Tree Farm, a section of land where he and his wife, Christine, built their dream home in the late 1970s. The couple planted a Christmas tree farm on the property and Christine maintained an extensive kitchen garden, while Fred tended honey bees. Life on the farm made its way into radiobroadcasts, Neighborly News columns, and the book "Letters from Section 17: A Collection of Morningside Essays" (Winnipeg: Great Plains Publishing, 1999).

Scope and Content:

Photograph shows an overview of the house on the McGuinness property, Christmas Tree Farm, Section 17.

Notes: See McG 9 1-2015.249 corresponding negatives #16 to #22

Name Access: Christmas Tree Farm

Section 17

Subject Access: residences

farms

trees

winter

building exteriors

Storage Location: RG 5 photograph storage drawer 2 (hanging photos)

Arrangement:

RR #8 photos

Images





Christmas Tree Farm - back of house

<http://archives.brandonu.ca/en/permalink/descriptions14187>

Part Of: Fred McGuinness collection

Description Level: Item

Series Number: McG 9

Item Number: 1-2015.256

Accession Number: 1-2015

GMD: graphic

Date Range: [1980s-1990s]

Physical Description: 5.25 " x 3.5" (colour)

History /

Biographical:

Fred McGuinness is popularly known for his work as the prairie essayist for CBC Radio's Morningside with Peter Gzowski, a position he held for 17 years. Many of McGuinness' Morningside essays were autobiographical in nature. He often reported about life on Christmas Tree Farm, a section of land where he and his wife, Christine, built their dream home in the late 1970s. The couple planted a Christmas tree farm on the property and Christine maintained an extensive kitchen garden, while Fred tended honey bees. Life on the farm made its way into radiobroadcasts, Neighborly News columns, and the book "Letters from Section 17: A Collection of Morningside Essays" (Winnipeg: Great Plains Publishing, 1999).

Scope and Content:

Photograph shows an overview of the house on the McGuinness property, Christmas Tree Farm, Section 17.

Notes: Negative accompanies photo

Name Access: Christmas Tree Farm

Section 17

Subject Access: residences

farms

trees

winter

building exteriors

Storage Location: RG 5 photograph storage drawer 2 (hanging photos)

Arrangement:

RR #8 photos

Images





Christmas Tree Farm negative set 1, frames 0 to 26

<http://archives.brandonu.ca/en/permalink/descriptions14180>

Part Of: Fred McGuinness collection

Description Level: Item

Series Number: McG 9

Item Number: 1-2015.249

Accession Number: 1-2015

GMD: graphic

Date Range: [1980s-1990s]

Physical Description: 1.5" x 1.5" (b/w)

Material Details: negatives

History /

Biographical:

Fred McGuinness is popularly known for his work as the prairie essayist for CBC Radio's Morningside with Peter Gzowski, a position he held for 17 years. Many of McGuinness' Morningside essays were autobiographical in nature. He often reported about life on Christmas Tree Farm, a section of land where he and his wife, Christine, built their dream home in the late 1970s. The couple planted a Christmas tree farm on the property and Christine maintained an extensive kitchen garden, while Fred tended honey bees. Life on the farm made its way into radiobroadcasts, Neighborly News columns, and the book "Letters from Section 17: A Collection of Morningside Essays" (Winnipeg: Great Plains Publishing, 1999).

Scope and Content:

Set consists of 27 negatives showing different views of the McGuinness property, Christmas Tree Farm, Section 17

Name Access: Christmas Tree Farm

Section 17

Subject Access: residences

farms

trees

Storage Location: RG 5 photograph storage drawer 2 (hanging photos)

Arrangement:

RR #8 photos

Images





Christmas Tree Farm negative set 2, frames 1A to 8A

<http://archives.brandonu.ca/en/permalink/descriptions14181>

Part Of: Fred McGuinness collection

Description Level: Item

Series Number: McG 9

Item Number: 1-2015.250

Accession Number: 1-2015

GMD: graphic

Date Range: [1980s-1990s]

Physical Description: 1.5" x 1.5" (b/w)

Material Details: negatives

History /

Biographical:

Fred McGuinness is popularly known for his work as the prairie essayist for CBC Radio's Morningside with Peter Gzowski, a position he held for 17 years. Many of McGuinness' Morningside essays were autobiographical in nature. He often reported about life on Christmas Tree Farm, a section of land where he and his wife, Christine, built their dream home in the late 1970s. The couple planted a Christmas tree farm on the property and Christine maintained an extensive kitchen garden, while Fred tended honey bees. Life on the farm made its way into radiobroadcasts, Neighborly News columns, and the book "Letters from Section 17: A Collection of Morningside Essays" (Winnipeg: Great Plains Publishing, 1999).

Scope and Content:

Set consists of 8 negatives showing a delivery of saplings to the McGuinness property, Christmas Tree Farm, Section 17

Name Access: Christmas Tree Farm
Section 17
Brandon Building Movers Ltd

Subject Access: residences
farms
trees
Transportation

Storage Location: RG 5 photograph storage drawer 2 (hanging photos)

Arrangement:

RR #8 photos



Christmas Tree Farm negative set 3, frames 1A to 13A

<http://archives.brandonu.ca/en/permalink/descriptions14190>

Part Of: Fred McGuinness collection

Description Level: Item

Series Number: McG 9

Item Number: 1-2015.259

Accession Number: 1-2015

GMD: graphic
Date Range: [1980s]
Physical Description: 1.5 " x 1.5" (b/w)
Material Details: negatives

History /

Biographical:

Fred McGuinness is popularly known for his work as the prairie essayist for CBC Radio's Morningside with Peter Gzowski, a position he held for 17 years. Many of McGuinness' Morningside essays were autobiographical in nature. He often reported about life on Christmas Tree Farm, a section of land where he and his wife, Christine, built their dream home in the late 1970s. The couple planted a Christmas tree farm on the property and Christine maintained an extensive kitchen garden, while Fred tended honey bees. Life on the farm made its way into radiobroadcasts, Neighborly News columns, and the book "Letters from Section 17: A Collection of Morningside Essays" (Winnipeg: Great Plains Publishing, 1999).

Scope and Content:

Set consists of 13 negatives showing work being conducted on the McGuinness property, Christmas Tree Farm, Section 17. The first 12 negatives show the McGuinness family planting with their tractor and the last negative shows a woman working on a swimming pool liner.

Notes: McGuinness drafted a manuscript, titled "Hole in the Ground," about the family pool on Section 17. It was one manuscript McGuinness was re-tooling before he passed away in 2011.

Name Access: Section 17
Christmas Tree Farm

Subject Access: Horticulture
farming
Tractors

Storage Location: RG 5 photograph storage drawer 2 (hanging photos)

Arrangement:

Cigar boxes

Images





Christmas Tree Farm - landscape

<http://archives.brandonu.ca/en/permalink/descriptions14189>

Part Of: Fred McGuinness collection

Description Level: Item

Series Number: McG 9

Item Number: 1-2015.258

Accession Number: 1-2015

GMD: graphic

Date Range: [1980s-1990s]

Physical Description: 5.25 " x 3.5" (colour)

History /

Biographical:

Fred McGuinness is popularly known for his work as the prairie essayist for CBC Radio's Morningside with Peter Gzowski, a position he held for 17 years. Many of McGuinness' Morningside essays were autobiographical in nature. He often reported about life on Christmas Tree Farm, a section of land where he and his wife, Christine, built their dream home in the late 1970s. The couple planted a Christmas tree farm on the property and Christine maintained an extensive kitchen garden, while Fred tended honey bees. Life on the farm made its way into radiobroadcasts, Neighborly News columns, and the book "Letters from Section 17: A Collection of Morningside Essays" (Winnipeg: Great Plains Publishing, 1999).

Scope and Content:

Photograph shows a landscape view from the McGuinness property, Christmas Tree Farm, Section 17.

Notes: Negative accompanies photo

Name Access: Christmas Tree Farm

Section 17

Subject Access: residences

farms

winter

landscapes

Storage Location: RG 5 photograph storage drawer 2 (hanging photos)

Arrangement:

RR #8 photos

Images





Christmas Tree Farm - aerial view

<http://archives.brandonu.ca/en/permalink/descriptions13964>

Part Of: Fred McGuinness collection

Description Level: Item

Series Number: McG 9

Item Number: 1-2015.36

Accession Number: 1-2015

GMD: graphic

Date Range: [2009]

Physical Description: 11" x 8.5" (colour)

Material Details: reproduction

Scope and Content:

Colour photocopy shows an aerial view of the Fred McGuinness property - Christmas Tree Farm - on section 17.

Name Access: Christmas Tree Farm

Subject Access: residences

aerial photographs

farms

Storage Location: McGuinness oversize storage drawer (1-2015)

Arrangement:

From RR #3 family letters

Images



Christmas Tree Farm - beehive scale

<http://archives.brandonu.ca/en/permalink/descriptions14188>

Part Of: Fred McGuinness collection

Description Level: Item

Series Number: McG 9

Item Number: 1-2015.257

Accession Number: 1-2015

GMD: graphic

Date Range: [1980s-1990s]

Physical Description: 5.25 " x 3.5" (colour)

History /

Biographical:

Fred McGuinness is popularly known for his work as the prairie essayist for CBC Radio's Morningside with Peter Gzowski, a position he held for 17 years. Many of McGuinness' Morningside essays were autobiographical in nature. He often reported about life on Christmas Tree Farm, a section of land where he and his wife, Christine, built their dream home in the late 1970s. The couple planted a Christmas tree farm on the property and Christine maintained an extensive kitchen garden, while Fred tended honey bees. Life on the farm made its way into radiobroadcasts, Neighborly News columns, and the book "Letters from Section 17: A Collection of Morningside Essays" (Winnipeg: Great Plains Publishing, 1999).

Scope and Content:

Photograph shows beehive scale on the McGuinness property, Christmas Tree Farm, Section 17.

Notes: Negative accompanies photo

Name Access: Christmas Tree Farm
Section 17

Subject Access: residences
farms
winter
beehives
apiaries

Storage Location: RG 5 photograph storage drawer 2 (hanging photos)

Arrangement:

RR #8 photos

Images





Fred McGuinness headshot

<http://archives.brandonu.ca/en/permalink/descriptions13893>

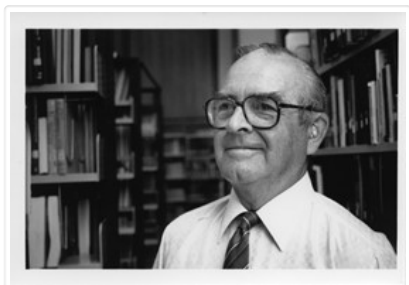
Part Of: Fred McGuinness collection
Creator: Photographer: Sandy Black
Description Level: Item
Series Number: McG 9
Item Number: 20-2009.204
Accession Number: 20-2009
GMD: graphic
Date Range: 1980s
Physical Description: 5" x 3.5" (b/w)
Physical Condition: Photograph is stamped stamped on back

Scope and Content:

Photograph shows Fred McGuinness standing in the stacks at Brandon University's John E. Robbins Library

Notes: Writing on back of photograph reads: Photography by Sandy Black
Name Access: Fred McGuinness
Subject Access: portraits
Storage Location: RG 5 photograph storage drawer 2 (hanging photos)
Arrangement:
From 20-2009 #4 plastic envelope #1

Images





Fred McGuinness headshot

<http://archives.brandonu.ca/en/permalink/descriptions13894>

Part Of: Fred McGuinness collection

Description Level: Item

Series Number: McG 9

Item Number: 20-2009.204

Accession Number: 20-2009

GMD: graphic

Date Range: 1952

Physical Description: 2.25" x 3.25" (b/w)

Scope and Content:

Photograph is a headshot of Fred McGuinness. Image was taken for the Saskatchewan Golden Jubilee Committee.

Notes: Writing on back of photograph reads: Reporting for Duty, Executive Director, Saskatchewan Golden Jubilee Committee, 1952

Name Access: Fred McGuinness

Saskatchewan Golden Jubilee

Subject Access: portraits

Storage Location: RG 5 photograph storage drawer 2 (hanging photos)

Arrangement:

From 20-2009 #4 plastic envelope #1

Images





Young Fred McGuinness

<http://archives.brandonu.ca/en/permalink/descriptions13974>

Part Of: Fred McGuinness collection

Creator: Leila McDiarmid Leck

Description Level: Item

Series Number: McG 9

Item Number: 1-2015.45

Accession Number: 1-2015

GMD: graphic

Date Range: 1936

Physical Description: 2.75" x 4.5" (b/w)

Custodial History:

Photograph sent to Fred McGuinness from Leila McDiarmid Leck of Mission, BC, on 08 Feb 1983 in response to his Park School column (see F.A. Rosser, "Sunbeams – Park School reminiscences from a far away friends, Brandon Sun 25 Jan 1983)

Scope and Content:

Photograph shows a young boy in a gadsby cap bending over a box camera. Behind him are the steps and porch to a residential home.

Notes: Back of the photograph is stamped: Jerrett's June 2 1936 Photo-Service
Brandon

Name Access: Fred McGuinness

Storage Location: RG 5 photograph storage drawer 2 (hanging photos)

Arrangement:

McG RR #1 "diary" (see McG 1.2 File 29)

Images





Fred McGuinness in uniform

<http://archives.brandonu.ca/en/permalink/descriptions14043>

Part Of: Fred McGuinness collection

Description Level: Item

Series Number: McG 9

Item Number: 1-2015.113

Accession Number: 1-2015

GMD: graphic

Date Range: [1940s]

Physical Description: 2.75" x 4.25" (b/w)

Scope and Content:

Photograph shows the McGuinness in his navy uniform on the deck of a ship, possibly the HMCS Alachasse.

Name Access: Fred McGuinness
Frederick George McGuinness
Royal Canadian Navy

Subject Access: World War II
uniforms
military
military people & associations
military personnel
ships

Storage Location: RG 5 photograph storage drawer 2 (hanging photos)

Arrangement:

BR #3 Family pictures

Images





Fred McGuinness in college?

<http://archives.brandonu.ca/en/permalink/descriptions14050>

Part Of: Fred McGuinness collection

Description Level: Item

Series Number: McG 9

Item Number: 1-2015.120

Accession Number: 1-2015

GMD: graphic

Date Range: [1940s]

Physical Description: 3.5" x 2.5" (b/w)

Scope and Content:

Photograph shows Fred McGuinness posing with another man, possibly a fellow student at the University of Manitoba.

Name Access: Fred McGuinness

Frederick George McGuinness

Storage Location: RG 5 photograph storage drawer 2 (hanging photos)

Arrangement:

BR #5 Family pictures

Images





Young Fred McGuinness

<http://archives.brandonu.ca/en/permalink/descriptions14054>

Part Of: Fred McGuinness collection

Description Level: Item

Series Number: McG 9

Item Number: 1-2015.124

Accession Number: 1-2015

GMD: graphic

Date Range: [1920s]

Physical Description: 7" x 11" (b/w)

Scope and Content:

Photograph shows a young Fred McGuinness standing in front of the lilac bushes adjacent to his house. Fred is wearing pants, sweater, gadsby cap and is standing with his hands in his pockets.

Name Access: Fred McGuinness

Frederick George McGuinness

Subject Access: portraits

Storage Location: McGuinness oversize storage drawer (1-2015)

Arrangement:

BR #3 Family pictures

Images

