

S. J. McKee Archives



Wilfred Whyte McCutcheon, Betty Gibson and Isabelle Mills

<http://archives.brandonu.ca/en/permalink/descriptions8891>

Part Of: RG 1 Brandon College fonds

Description Level: Item

Series Number: MG 1 1.12

Item Number: 15

Accession Number: 12-2008

GMD: graphic

Date Range: July 17, 1987

Physical Description: 4" x 5" (color)

History /

Biographical:

See sub-series level description for MG 1 1.12 Wilfred Whyte McCutcheon fonds for biographical information.

Custodial History:

See sub-series level description for MG 1 1.12 Wilfred Whyte McCutcheon fonds for custodial history.

Scope and Content:

Photograph of Wilfred Whyte McCutcheon with two former staff members Dr. Betty Gibson and Dr. Isabelle Mills (Saskatoon) at the Teacher Training Course Class of 1962 25th reunion in Brandon July 1987.

Storage Location: RG 5 photograph storage drawer



Elma Hughes

<http://archives.brandonu.ca/en/permalink/descriptions14242>

Part Of: Joseph H. Hughes collection
Creator: Photographer: Clark J. Smith, Brandon
Description Level: Item
Series Number: 3-1997.1
Item Number: 3-1997.1.51
Accession Number: 3-1997
Other Numbers: Hughes #53
GMD: graphic
Date Range: c.1950
Physical Description: 10" x 8" (b/w)
Material Details: on matting
Physical Condition: Adhesive on back of photograph

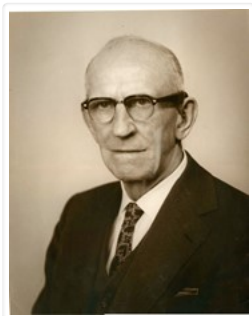
Scope and Content:

Photograph shows a portrait of an elderly woman with crimped hair and wearing glasses. The woman has been identified as Elma Hughes, wife of Willard J. Hughes.

Name Access: Elma Hughes
Subject Access: portraits
Storage Location: RG 5 photograph storage drawer

Images





Willard Hughes

<http://archives.brandonu.ca/en/permalink/descriptions14256>

Part Of: Joseph H. Hughes collection

Description Level: Item

Series Number: 3-1997.1

Item Number: 3-1997.1.65

Accession Number: 3-1997

GMD: graphic

Date Range: [1960s]

Physical Description: 11" x 14" (b/w)

Physical Condition: Photograph is creased

Scope and Content:

Photograph shows a portrait of an elderly man wearing a three-piece suit and black-rimmed glasses.

Notes: Writing on the back of the photograph reads: Willard Hughes

Name Access: Willard Hughes

Subject Access: portraits

Storage Location: Hughes oversize drawer

Images





Mrs. L. O'Neil

<http://archives.brandonu.ca/en/permalink/descriptions14258>

Part Of: Joseph H. Hughes collection

Description Level: Item

Series Number: 3-1997.1

Item Number: 3-1997.1.67

Accession Number: 3-1997

GMD: graphic

Date Range: [1800s]

Physical Description: 20" x 15" (b/w)

Material Details: on matting

Scope and Content:

Photograph shows an elderly couple posing for a formal portrait. The woman is wearing a black crepe dress. The man, who is bearded but not mustached, is wearing a black jacket.

Notes: Writing on the back of the photograph reads: Mrs. L. O'Neil?

Subject Access: portraits

Storage Location: Hughes oversize drawer

Images





Family portrait

<http://archives.brandonu.ca/en/permalink/descriptions14240>

Part Of: Joseph H. Hughes collection
Creator: Photographer: G. Marr Studio, Strathroy, ON
Description Level: Item
Series Number: 3-1997.1
Item Number: 3-1997.1.49
Accession Number: 3-1997
Other Numbers: Hughes #51
GMD: graphic
Date Range: c.1880s
Physical Description: 6.75" x 4.75" (b/w)
Material Details: on matting
Physical Condition: Adhesive on back of photograph

Scope and Content:

Photograph shows a multi-generational group of people standing outside in front of a wood-framed home. Individuals may possibly belong to the Hughes family.

Notes: Photograph stamped on the back: from the G. Marr Studio, Photos, Views, Frames, Crayon Portraits, &c., Strathroy, Ontario.

Subject Access: family portraits

Storage Location: RG 5 photograph storage drawer

Images





Doreen Rouse Pachel, Yorkton

<http://archives.brandonu.ca/en/permalink/descriptions14241>

Part Of: Joseph H. Hughes collection

Description Level: Item

Series Number: 3-1997.1

Item Number: 3-1997.1.50

Accession Number: 3-1997

Other Numbers: Hughes #52

GMD: graphic

Date Range: c.1950

Physical Description: 3.5" x 2.5" (b/w)

Physical Condition: Writing on front of photograph

Scope and Content:

Photograph shows a young woman sitting on a porch step holding a baby. A toddler sits on the step to her right.

Notes: Writing on the front of photograph reads: Doreen Rouse Pachel, Yorkton.
Writing on the back of photograph reads: Doreen Rouse Pachel with
(Billy & Murray)

Name Access: Doreen Rouse Pachel

Subject Access: family portraits

children

women

Storage Location: RG 5 photograph storage drawer

Images





Hughes family in Ontario

<http://archives.brandonu.ca/en/permalink/descriptions14266>

Part Of: Joseph H. Hughes collection

Description Level: Item

Series Number: 3-1997.1

Item Number: 3-1997.1.68

Accession Number: 3-1997

Other Numbers: Hughes #66

GMD: graphic

Date Range: 1868

Physical Description: 9.25" x 7.25" (b/w)

Material Details: on matting

Scope and Content:

Photograph shows a group of 14 individuals scattered throughout a yard of a two-storey brick home with an extension. An elderly woman can be seen in a wheelchair. Four women are wearing white gowns with long sleeves.

Notes: Writing on the front corner of the photograph reads: 1868

Subject Access: portraits

residences

building exteriors

Storage Location: Hughes oversize drawer

Images



Brandon College Platoon

<http://archives.brandonu.ca/en/permalink/descriptions14257>

Part Of: Joseph H. Hughes collection

Creator: Photographer: Davidson Studio

Description Level: Item

Series Number: 3-1997.1

Item Number: 3-1997.1.66

Accession Number: 3-1997

Other Numbers: Hughes #81

GMD: graphic
Date Range: 1916
Physical Description: 13.5" x 10.5" (b/w)
Material Details: on matting
Physical Condition: Photograph beginning to separate from matting

History /

Biographical:

Brandon College established a Canadian Officer Training Corps (COTC) program in 1916 and had enough students for a platoon that would join the 196th Western Universities Battalion's B Company. COTC logs for in the SJ McKee Archives show that at least 40 men regularly attended classes on campus during the 1916 winter term.

The Brandon Daily Sun published the names of 60 potential platoon recruits before they headed to Camp Hughes to train in the summer of 1916. Although Lt. J.R.C. Evans spearheaded the training of the COTC enlistees at Brandon College, he was found medically unfit for overseas service. In his stead, the son of the college's founder, Lt. William Carey McKee, lead the platoon to Camp Hughes where they joined the 196th Battalion. Of the 60 recruits identified in the local paper, 20 would not survive the war, including Lt. McKee.
[ST/2016]

Scope and Content:

Photograph shows a group of 40 men wearing WWI uniforms. The men have the Canada general service cap badge on their headdress. The officer in the centre of the group (i.e., the man with the cane) is J.R.C. Evans. The group of men are likely members of the first Brandon College Platoon, which joined the 196th Western Universities Battalion.

Name Access: J.R.C. Evans
Subject Access: portraits
First World War
Great War
Storage Location: Hughes oversize drawer
Related Material: Daly House Museum
The Clark Hall Scrapbook

Images





Hughes & Co. Lumber, founding members

<http://archives.brandonu.ca/en/permalink/descriptions14254>

Part Of: Joseph H. Hughes collection

Description Level: Item

Series Number: 3-1997.1

Item Number: 3-1997.1.63

Accession Number: 3-1997

Other Numbers: Hughes #56

GMD: graphic

Date Range: [1900s]

Physical Description: 9.5" x 7.5" (b/w)

Material Details: on matting

Physical Condition: Mat is water stained.

Scope and Content:

Photograph shows a group of 10 men wearing heavy coats posing in front of Hughes & Co. Lumber located at 152 10th Street.

Notes: Back of photograph is stamped: Hughes & Co. Ltd., 1009 Princess Ave., Brandon, Man. Writing on the back of the photograph reads: Founders of Hughes

Name Access: Hughes & Co. Lumber

Subject Access: Brandon business buildings & facilities before 1940
street scenes
portraits

Storage Location: Hughes oversize drawer

Images





Strathcona Block, H.Lamontagne & Co.

<http://archives.brandonu.ca/en/permalink/descriptions14255>

Part Of: Joseph H. Hughes collection
Creator: Photographer: Frank Gowen, Brandon
Description Level: Item
Series Number: 3-1997.1
Item Number: 3-1997.1.64
Accession Number: 3-1997
Other Numbers: Hughes #64
GMD: graphic
Date Range: 1905
Physical Description: 7.5" x 9.5" (b/w)
Material Details: on matting
Physical Condition: Mat is water stained, emulsive side is stained

Scope and Content:

Photograph shows the recently constructed Strathcona Block. H. Lamontagne & Co. Ltd., Wholesale, occupies the ground floor. Scaffolding is suspended from the north side of the building. Buildings have yet to be erected to the north and south sides of the Strathcona Block.

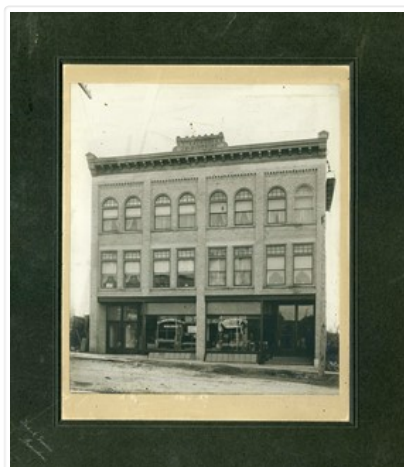
Notes: Back of photograph is stamped: Hughes & Co. Ltd., 1009 Princess Ave., Brandon, Man.

Name Access: Strathcona Block
H. Lamontagne & Co.

Subject Access: Brandon business buildings & facilities before 1940
street scenes
portraits

Storage Location: Hughes oversize drawer

Images





Wheat City Business College Hockey Club

<http://archives.brandonu.ca/en/permalink/descriptions14267>

Part Of: Joseph H. Hughes collection

Description Level: Item

Series Number: 3-1997.1

Item Number: 3-1997.1.69

Accession Number: 3-1997

Other Numbers: Hughes #67

GMD: graphic

Date Range: 1912

Physical Description: 9.25" x 7.25" (b/w)

Material Details: on matting

Physical Condition: Photograph is water stained

Scope and Content:

Photograph shows a group of 10 men, eight whom are wearing sweaters with the letters WCBC applied across the chest. The goalie is seated in a wooden chair and wears his goalie pads and skates. The four other players in the front row are also wearing skates and have their hockey sticks.

Notes: Writing on the front of the photograph mat reads: Wheat City Business College Hockey Club, 1912

Name Access: Wheat City Business College

Subject Access: portraits

Hockey

sports people & activities

team sports

team photos

Storage Location: Hughes oversize drawer

Images

