

S. J. McKee Archives



Smith's Lumber Ltd.

<http://archives.brandonu.ca/en/permalink/descriptions13272>

Part Of: CKX fonds
Creator: CKX
Description Level: Item
Series Number: S
Item Number: 11-2010.S15b
Accession Number: 11-2010
GMD: graphic
Date Range: after 1954
Physical Description: 5" x 4" (b/w)
Material Details: Negative
Custodial History:

See fonds level of the CKX records for custodial history.

Scope and Content:

Image of the interiors of Smith's Lumber building.

Name Access: CKX
Smith's Lumber Ltd.
Subject Access: building interiors
store interiors
employees
signs and signboards
businesses
persons
hardware stores
Storage Location: CKX fonds - 2010 accessions

Images





Wally's Barber Shop

<http://archives.brandonu.ca/en/permalink/descriptions12842>

Part Of: CKX fonds
Creator: CKX
Description Level: Item
Series Number: W
Item Number: 11-2010.W27
Accession Number: 11-2010
GMD: graphic
Date Range: after 1954
Physical Description: 5" x 4" (b/w)
Material Details: Negative

Custodial History:

See fonds level of the CKX records for custodial history.

Scope and Content:

Image of employees standing outside of Wally's Barber Shop.

Name Access: CKX
Wally's Barber Shop

Subject Access: building exteriors
businesses
signs and signboards
employees

Storage Location: CKX fonds - 2010 accessions

Images





Rivers

<http://archives.brandonu.ca/en/permalink/descriptions13412>

Part Of: CKX fonds
Creator: CKX
Description Level: Item
Series Number: R
Item Number: 11-2010.R69b
Accession Number: 11-2010
GMD: graphic
Date Range: 1969
Physical Description: 2.5" x 2.5" (b/w)
Material Details: Negative

Custodial History:

See fonds level of the CKX records for custodial history.

Scope and Content:

Image of a street in Rivers.

Name Access: CKX
North American Lumber
Rex Theatre

Subject Access: building exteriors
winter
businesses
cars
signs and signboards
Trucks
theatres
hardware stores

Storage Location: CKX fonds - 2010 accessions

Images





Rivers

<http://archives.brandonu.ca/en/permalink/descriptions13413>

Part Of: CKX fonds
Creator: CKX
Description Level: Item
Series Number: R
Item Number: 11-2010.R69a
Accession Number: 11-2010
GMD: graphic
Date Range: 1969
Physical Description: 5" x 4" (b/w)
Material Details: Negative

Custodial History:

See fonds level of the CKX records for custodial history.

Scope and Content:

Image of a street in Rivers.

Name Access: CKX
Delrands
Rex Theatre

Subject Access: building exteriors
winter
businesses
cars
signs and signboards
theatres
drug stores
persons

Storage Location: CKX fonds - 2010 accessions

Images





Shoal Lake merchants - H. McLean & Co.

<http://archives.brandonu.ca/en/permalink/descriptions13041>

Part Of: CKX fonds
Creator: CKX
Description Level: Item
Series Number: S
Item Number: 11-2010.S142b
Accession Number: 11-2010
GMD: graphic
Date Range: 196?
Physical Description: 2.5" x 2.5" (b/w)
Material Details: Negative

Custodial History:

See fonds level of the CKX records for custodial history.

Scope and Content:

Image of H. McLean & Co. employees.

Name Access: CKX
H. McLean & Co.

Subject Access: employees
building interiors
garages
businesses

Storage Location: CKX fonds - 2010 accessions

Images





Radio Electric (Birtle)

<http://archives.brandonu.ca/en/permalink/descriptions13367>

Part Of: CKX fonds
Creator: CKX
Description Level: Item
Series Number: R
Item Number: 11-2010.R90b
Accession Number: 11-2010
GMD: graphic
Date Range: September 1963
Physical Description: 2.5" x 2.5" (b/w)
Material Details: Negative

Custodial History:

See fonds level of the CKX records for custodial history.

Scope and Content:

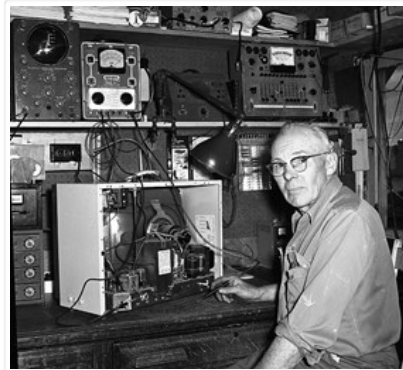
Image of a man fixing electronic equipment.

Name Access: CKX
Radio Electric

Subject Access: building interiors
businesses
electronics
employees

Storage Location: CKX fonds - 2010 accessions

Images





Prince Edward Hotel

<http://archives.brandonu.ca/en/permalink/descriptions13623>

Part Of: CKX fonds
Creator: CKX
Description Level: Item
Series Number: P
Item Number: 11-2010.P22a
Accession Number: 11-2010
GMD: graphic
Date Range: after 1954
Physical Description: 5" x 4" (b/w)
Material Details: Negative

Custodial History:

See fonds level of the CKX records for custodial history.

Scope and Content:

Image of the catering staff from the hotel.

Name Access: CKX
Prince Edward Hotel

Subject Access: employees
businesses
hotels
building interiors

Storage Location: CKX fonds - 2010 accessions

Images





Smith's Lumber Ltd.

<http://archives.brandonu.ca/en/permalink/descriptions13270>

Part Of: CKX fonds
Creator: CKX
Description Level: Item
Series Number: S
Item Number: 11-2010.S15d
Accession Number: 11-2010
GMD: graphic
Date Range: after 1954
Physical Description: 4.75" x 4" (b/w)
Material Details: Negative

Custodial History:

See fonds level of the CKX records for custodial history.

Scope and Content:

Image of Smith's Lumber building.

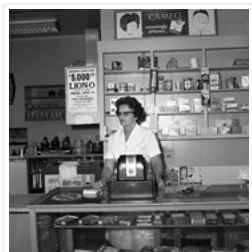
Name Access: CKX
Smith's Lumber Ltd.

Subject Access: building exteriors
employees
Trucks
signs and signboards
businesses
machinery
lumber
store exteriors

Storage Location: CKX fonds - 2010 accessions

Images





Trans-Canada Service (Oak Lake)

<http://archives.brandonu.ca/en/permalink/descriptions12991>

Part Of: CKX fonds
Creator: CKX
Description Level: Item
Series Number: T
Item Number: 11-2010.T17c
Accession Number: 11-2010
GMD: graphic
Date Range: September 1963
Physical Description: 2.5" x 2.5" (b/w)

Material Details: Negative

Custodial History:

See fonds level of the CKX records for custodial history.

Scope and Content:

Image of a cashier in the Trans-Canada Service building.

Name Access: CKX
Trans-Canada Service

Subject Access: service stations
persons
businesses
employees
signs and signboards

Storage Location: CKX fonds - 2010 accessions

Images





Riviera Beauty Saloon

<http://archives.brandonu.ca/en/permalink/descriptions13436>

Part Of: CKX fonds
Creator: CKX
Description Level: Item
Series Number: R
Item Number: 11-2010.R54
Accession Number: 11-2010
GMD: graphic
Date Range: 1967
Physical Description: 5" x 4" (b/w)
Material Details: Negative

Custodial History:

See fonds level of the CKX records for custodial history.

Scope and Content:

Image of the interior of Riviera Beauty Saloon.

Name Access: CKX
Riviera Beauty Saloon

Subject Access: businesses
persons
building interiors
employees
beauty salons

Storage Location: CKX fonds - 2010 accessions

Images





Virden sponsors - Virden Television Ltd.

<http://archives.brandonu.ca/en/permalink/descriptions12904>

Part Of: CKX fonds
Creator: CKX
Description Level: Item
Series Number: V
Item Number: 11-2010.V9b
Accession Number: 11-2010
GMD: graphic
Date Range: 1968
Physical Description: 1.5" x 1.5" (b/w)
Material Details: Negative

Custodial History:

See fonds level of the CKX records for custodial history.

Scope and Content:

Image of the Virden Television Ltd. building.

Name Access: CKX
Virden Television Ltd.

Subject Access: building exteriors
signs and signboards
businesses

Storage Location: CKX fonds - 2010 accessions

Images





Revelstoke Building Materials Ltd.

<http://archives.brandonu.ca/en/permalink/descriptions13437>

Part Of: CKX fonds
Creator: CKX
Description Level: Item
Series Number: R
Item Number: 11-2010.R53c
Accession Number: 11-2010
GMD: graphic
Date Range: 1968
Physical Description: 5" x 4" (b/w)
Material Details: Negative

Custodial History:

See fonds level of the CKX records for custodial history.

Scope and Content:

Image of the interior of Revelstoke Building Materials.

Name Access: CKX
Revelstoke Building Materials Ltd.

Subject Access: businesses
persons
building interiors
employees
hardware stores
tools

Storage Location: CKX fonds - 2010 accessions

Images





Wareham's General Insurance and Real Estate (Rivers)

<http://archives.brandonu.ca/en/permalink/descriptions12841>

Part Of: CKX fonds
Creator: CKX
Description Level: Item
Series Number: W
Item Number: 11-2010.W28
Accession Number: 11-2010
GMD: graphic
Date Range: after 1954
Physical Description: 5" x 4" (b/w)
Material Details: Negative

Custodial History:

See fonds level of the CKX records for custodial history.

Scope and Content:

Image of the Wareham's General Insurance and Real Estate building.

Name Access: CKX
Wareham's General Insurance and Real Estate

Subject Access: building exteriors
businesses
signs and signboards
cars

Storage Location: CKX fonds - 2010 accessions

Images





Virден sponsors - Don Wedow Music Centre

<http://archives.brandonu.ca/en/permalink/descriptions12905>

Part Of: CKX fonds

Creator: CKX

Description Level: Item

Series Number: V

Item Number: 11-2010.V9a

Accession Number: 11-2010

GMD: graphic

Date Range: 1968

Physical Description: 1.5" x 1.5" (b/w)

Material Details: Negative

Custodial History:

See fonds level of the CKX records for custodial history.

Scope and Content:

Image of the Don Wedow Music Centre building.

Name Access: CKX

Don Wedow Music Centre

Subject Access: building exteriors

signs and signboards

businesses

winter

Storage Location: CKX fonds - 2010 accessions

Images





Tony's Shamrock Cafe

<http://archives.brandonu.ca/en/permalink/descriptions12984>

Part Of: CKX fonds
Creator: CKX
Description Level: Item
Series Number: T
Item Number: 11-2010.T23a
Accession Number: 11-2010
GMD: graphic
Date Range: after 1954
Physical Description: 2.5" x 2.5" (b/w)
Material Details: Negative

Custodial History:

See fonds level of the CKX records for custodial history.

Scope and Content:

Image of Tony's Shamrock Cafe building.

Name Access: CKX
Tony's Shamrock Cafe
Beltone Hearing Aid Centre
Doublemint Gum

Subject Access: businesses
signs and signboards
restaurants
building exteriors

Storage Location: CKX fonds - 2010 accessions

Images





Ted Good Music

<http://archives.brandonu.ca/en/permalink/descriptions13003>

Part Of: CKX fonds
Creator: CKX
Description Level: Item
Series Number: T
Item Number: 11-2010.T11
Accession Number: 11-2010
GMD: graphic
Date Range: 1968
Physical Description: 5" x 4" (b/w)
Material Details: Negative

Custodial History:

See fonds level of the CKX records for custodial history.

Scope and Content:

Image of the Ted Good Music building.

Name Access: CKX
Ted Good Music

Subject Access: building exteriors
businesses
signs and signboards
cars

Storage Location: CKX fonds - 2010 accessions

Images





Murray's Garage (Souris)

<http://archives.brandonu.ca/en/permalink/descriptions13109>

Part Of: CKX fonds
Creator: CKX
Description Level: Item
Series Number: S
Item Number: 11-2010.S109a
Accession Number: 11-2010
GMD: graphic
Date Range: after 1954
Physical Description: 5" x 4" (b/w)
Material Details: Negative

Custodial History:

See fonds level of the CKX records for custodial history.

Scope and Content:

Image of Murray's Garage.

Name Access: CKX
Murray's Garage

Subject Access: businesses
cars
building exteriors
signs and signboards

Storage Location: CKX fonds - 2010 accessions

Images





Savoy Restaurant - sign

<http://archives.brandonu.ca/en/permalink/descriptions13126>

Part Of: CKX fonds
Creator: CKX
Description Level: Item
Series Number: S
Item Number: 11-2010.S97
Accession Number: 11-2010
GMD: graphic
Date Range: after 1954
Physical Description: 5" x 4" (b/w)
Material Details: Negative

Custodial History:

See fonds level of the CKX records for custodial history.

Scope and Content:

Image of the Savoy Restaurant building.

Name Access: CKX
Savoy Restaurant

Subject Access: building exteriors
restaurants
signs and signboards
businesses

Storage Location: CKX fonds - 2010 accessions

Images





Smith Electric (Neepawa)

<http://archives.brandonu.ca/en/permalink/descriptions13239>

Part Of: CKX fonds
Creator: CKX
Description Level: Item
Series Number: S
Item Number: 11-2010.S34a
Accession Number: 11-2010
GMD: graphic
Date Range: after 1954
Physical Description: 2.5" x 2.5" (b/w)
Material Details: Negative

Custodial History:

See fonds level of the CKX records for custodial history.

Scope and Content:

Image of the Smith Electric building.

Name Access: CKX
Smith Electric
General Electric

Subject Access: businesses
building exteriors
signs and signboards
cars

Storage Location: CKX fonds - 2010 accessions

Images





Sel-Rite

<http://archives.brandonu.ca/en/permalink/descriptions13242>

Part Of: CKX fonds

Creator: CKX

Description Level: Item

Series Number: S

Item Number: 11-2010.S32

Accession Number: 11-2010

GMD: graphic

Date Range: 1968

Physical Description: 1.5" x 1.5" (b/w)

Material Details: Negative

Custodial History:

See fonds level of the CKX records for custodial history.

Scope and Content:

Image of the Sel-Rite Building Supplies building.

Name Access: CKX

Sel-Rite Building Supplies

Subject Access: businesses

building exteriors

signs and signboards

cars

Storage Location: CKX fonds - 2010 accessions

Images

