

# S. J. McKee Archives



## Lovstrom Block A - summary

<http://archives.brandonu.ca/en/permalink/descriptions12451>

Part Of: RG 7 Beverley Nicholson fonds

Description Level: Sub-series

Series Number: 3.2

Accession Number: 1-2010

GMD: multiple media

Date Range: 1987

History /

Biographical:

Block A was the most southern site in the locale. The excavation block consisted of 12 contiguous 1m<sup>2</sup> units dug in a 3m x 4m rectangle. The block was the least productive of cultural materials, and bone preservation was the poorest. Under the sod, the black loam layer appeared at 5 cm below surface, and the glacial clay at 25 cm below surface. Excavators described the soil matrix as gritty and silty, and it became concrete hard when dried. The occupation or bone layer extended from 10 to 25 cm below surface and consisted of a contiguous scatter of FCR and unidentifiable large ungulate bone which was heavily processed and intensively scavenged by carnivores. Most cultural materials were recovered within this layer. Fire cracked rock (FCR) and small burnt bone fragments were present but no intact hearths or processing features were evident.

Non-cultural materials included limestone and other natural pebbles derived from the parent till. (These small limestone pebbles were apparent in the occupation layers in other blocks as well). Root and rodent disturbance was extensive throughout Block A. Most units were excavated to gravelly clay till. Nine of the twelve units were dug to level 4b, which ended at 40 cm b.s.

No further excavations were done at this site. No C14 dates were taken.

Scope and Content:

Sub-sub-sub series contains: Summary information of field methodology, number and co-ordinates of excavations, personnel and their staff position; Field journals are daily records of recoveries, features and activities at the site; Site records include excavation level and unit summaries, feature sheets, profiles; sample records and maps; Artifact catalogues are lists and identifications of all artifacts recovered; Photographs are of excavation units, features, the landscape and personnel.

Name Access: Lovstrom Block A - summary

Subject Access: Archaeology  
Lovstrom locale  
Lovstrom Block A



## Lovstrom Block D 1987

<http://archives.brandonu.ca/en/permalink/descriptions12541>

Part Of: RG 7 Beverley Nicholson fonds  
Description Level: Sub sub series  
Series Number: 3.5.1  
Accession Number: 1-2010  
GMD: multiple media  
Date Range: 1987  
Material Details: Field journals have been scanned in multi-page PDF files. Artifact catalogues are PDF files in spreadsheet format. Photographs are in jpeg format.

### History /

#### Biographical:

Block D is a wooded with oak and an understory of saskatoon and hazelnut with a thick ground cover of poison ivy and sarsaparilla. Root and rodent disturbance was extensive.

Directed by Dr. Nicholson and with Jane Gibson as crew chief, two units were opened in Block D in 1987. A hearth was identified with a ring of stones containing charcoal and burnt bone. Recoveries included two rim sherds with tool-impressed decorations along the outer edge and two prairie side-notched points. Associated bone was primarily appendicular, indicating secondary butchering.

A radiocarbon date of 230+/-90 B.P. recovered in 1987 from 17 cm below surface is consistent with a Protohistoric occupation.

#### Scope and Content:

Sub-sub-sub series contains: Summary information of field methodology, number and co-ordinates of excavations, personnel and their staff position; Field journals are daily records of recoveries, features and activities at the site; Site records include excavation level and unit summaries, feature sheets, profiles; sample records and maps; Artifact catalogues are lists and identifications of all artifacts recovered; Photographs are of excavation units, features, the landscape and personnel.

Name Access: Lovstrom Block D 1987  
Subject Access: Archaeology  
Lovstrom locale  
Lovstrom Block D



## Lovstrom Block D 1988

<http://archives.brandonu.ca/en/permalink/descriptions12554>

Part Of: RG 7 Beverley Nicholson fonds  
Description Level: Sub sub series  
Series Number: 3.5.2  
Accession Number: 1-2010  
GMD: multiple media  
Date Range: 1988  
Material Details: Field journals have been scanned in multi-page PDF files. Artifact catalogues are PDF files in spreadsheet format. Photographs are in jpeg format.

### History /

#### Biographical:

Block D is a wooded with oak and an understory of saskatoon and hazelnut with a thick ground cover of poison ivy and sarsaparilla. Root and rodent disturbance was extensive.

Directed by Dr. Nicholson with Ian Kuijit as crew chief, five units were opened in Block D in 1988. Four units were excavated: 88, 91, 92 and 94. A feature in units 91 and 92 contained extensive deposits of large bison bone and fire-cracked rock. Several of the lower limb elements were articulated. Bone deposits were associated with numerous large fire-cracked rocks and were clustered in an area of one meter. Also recovered were a side-notched projectile point and two historic gun flints.

Judging from the association of the gun flints, projectile points, and bison bone, as well as the radiocarbon date of 230+/-90 B.P. recovered in 1987, it appears that this feature is from the Protohistoric period and related to refuse disposal.

#### Scope and Content:

Sub-sub-sub series contains: Summary information of field methodology, number and co-ordinates of excavations, personnel and their staff position; Field journals are daily records of recoveries, features and activities at the site; Site records include excavation level and unit summaries, feature sheets, profiles; sample records and maps; Artifact catalogues are lists and identifications of all artifacts recovered; Photographs are of excavation units, features, the landscape and personnel.

Name Access: Lovstrom Block D 1988  
Subject Access: Archaeology  
Lovstrom locale  
Lovstrom Block D



## Lovstrom Block D 1988 - site

<http://archives.brandonu.ca/en/permalink/descriptions12685>

Part Of: RG 7 Beverley Nicholson fonds

Description Level: Item

Series Number: 3.5.2.5

Item Number: 3.5.2.5.1

Accession Number: 1-2010

GMD: graphic

Date Range: 1988

Physical Description: 536 x776(360KB )

Material Details: JPEG

Scope and Content:

Block D at the Lovstrom locale.

Name Access: Lovstrom Block D 1988 - site

Subject Access: Archaeology  
Lovstrom locale  
Lovstrom Block D

### Images

---





## Lovstrom Block D 1987 - crew

<http://archives.brandonu.ca/en/permalink/descriptions12550>

Part Of: RG 7 Beverley Nicholson fonds

Description Level: Item

Series Number: 3.5.1.5

Item Number: 3.5.1.5.1

Accession Number: 1-2010

GMD: graphic

Date Range: 1987

Physical Description: 1174 x 800 (1114KB )

Material Details: JPEG

Scope and Content:

Bev Nicholson, Jane Gibson and Blaine Frenette at Block D.

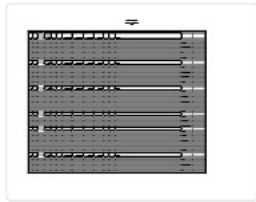
Name Access: Lovstrom Block D 1987 - crew

Subject Access: Archaeology  
Lovstrom locale  
Lovstrom Block D

### Images

---





## Lovstrom Block D 1987 - artifact catalogue

<http://archives.brandonu.ca/en/permalink/descriptions12549>

Part Of: RG 7 Beverley Nicholson fonds

Description Level: sub sub sub series

Series Number: 3.5.1.4

Accession Number: 1-2010

GMD: textual records

Date Range: 1987

Physical Description: 31 pages

Material Details: PDF

History /

Biographical:

Artifact catalogue containing records from the excavation units 87 and 93 at Lovstrom Block D.  
The catalogue contains 27 records.

Scope and Content:

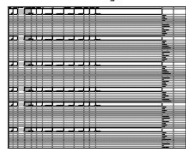
Spreadsheet containing information about the artifacts recovered, including: unit, level, artifact number, catalogue number, depth, co-ordinates, entry date, date recovered, count, weight, UTM co-ordinates, notes (excavators initials and comments) and artifact identification.

Name Access: Lovstrom Block D 1987 - artifact catalogue

Subject Access: Archaeology  
Lovstrom locale  
Lovstrom Block D

### Documents

---



3.5.1.4\_LovCat\_D\_87.pdf

 Read PDF

 Download PDF



## Lovstrom Block D 1987 - Peter Filopoulos

<http://archives.brandonu.ca/en/permalink/descriptions12551>

Part Of: RG 7 Beverley Nicholson fonds

Description Level: Item

Series Number: 3.5.1.5

Item Number: 3.5.1.5.2

Accession Number: 1-2010

GMD: graphic

Date Range: 1987

Physical Description: 536 x 824 (336KB )

Material Details: JPEG

Scope and Content:

Peter Filopoulos at Block D.

Name Access: Lovstrom Block D 1987 - Peter Filopoulos

Subject Access: Archaeology  
Lovstrom locale  
Lovstrom Block D

### Images

---





## Lovstrom Block D 1987 - rain tarps

<http://archives.brandonu.ca/en/permalink/descriptions12552>

Part Of: RG 7 Beverley Nicholson fonds

Description Level: Item

Series Number: 3.5.1.5

Item Number: 3.5.1.5.3

Accession Number: 1-2010

GMD: graphic

Date Range: 1987

Physical Description: 800 x 1146 (733KB )

Material Details: JPEG

### Scope and Content:

1987 was a very wet year and excavations were covered with tarps.

Name Access: Lovstrom Block D 1987 - rain tarps

Subject Access: Archaeology  
Lovstrom locale  
Lovstrom Block D

### Images

---





## Lovstrom Block D 1987 - XU 87

<http://archives.brandonu.ca/en/permalink/descriptions12553>

Part Of: RG 7 Beverley Nicholson fonds

Description Level: Item

Series Number: 3.5.1.5

Item Number: 3.5.1.5.4

Accession Number: 1-2010

GMD: graphic

Date Range: 1987

Physical Description: 1171 x 800 (845KB )

Material Details: JPEG

Scope and Content:

Excavation unit 87 at Block D.

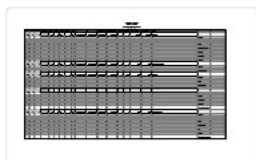
Name Access: Lovstrom Block D 1987 - XU 87

Subject Access: Archaeology  
Lovstrom locale  
Lovstrom Block D

### Images

---





## Lovstrom Block D 1988 - artifact catalogue

<http://archives.brandonu.ca/en/permalink/descriptions12564>

Part Of: RG 7 Beverley Nicholson fonds

Description Level: sub sub sub series

Series Number: 3.5.1.4

Accession Number: 1-2010

GMD: textual records

Date Range: 1988

Physical Description: 135 pages

Material Details: PDF

History /

Biographical:

Artifact catalogue containing records from the excavation units 88, 91, 92, and 94 at Lovstrom Block D. The catalogue contains 719 records.

Scope and Content:

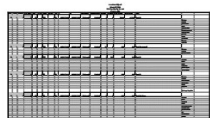
Spreadsheet containing information about the artifacts recovered, including: unit, level, artifact number, catalogue number, depth, co-ordinates, entry date, date recovered, count, weight, UTM co-ordinates, notes (excavators initials and comments) and artifact identification.

Name Access: Lovstrom Block D 1988 - artifact catalogue

Subject Access: Archaeology  
Lovstrom locale  
Lovstrom Block D

### Documents

---



3.5.2.4\_LovCat\_D\_88.pdf

 Read PDF

 Download PDF



## Lovstrom Block H - summary

<http://archives.brandonu.ca/en/permalink/descriptions12638>

Part Of: RG 7 Beverley Nicholson fonds

Description Level: Sub-series

Series Number: 3.9

Accession Number: 1-2010

GMD: multiple media

Date Range: 1988 - 1991

History /

Biographical:

The vegetation in block H is similar to other areas in the locale with an open oak forest with a light understory of saskatoon, hazelnut, poison ivy and sarsaparilla.

The excavations of the eight 1m<sup>2</sup> units in 1988 resulted in the recovery of over 650 ceramic fragments including 20 rim sherds from at least four vessels, a grooved maul, fire-cracked rock, lithic debitage and a reworked Avonlea projectile point. A large amount of bison bone, including a number of axial elements and a fragmented skull were also recovered.

Based on the 1988 recoveries at the site further excavations took place in 1991. Nine excavation units were opened next to the previous excavations. Another 250 ceramic sherds were recovered in 1991. Nine vessels have been identified based on rim sherds. Vickers Focus and Woodland vessels have been identified and two vessels similar to Scattered Village Complex were recovered.

The lithic material assemblage is intermediate between Blocks G and E with KRF being the most frequent material category followed by local cherts.

Two features, a hearth and a curvilinear arrangement of rock were recovered. The high numbers of ceramic fragments suggests a habitation area, rather than hunting or butchering behavior. However, the separation of occupations at the site is difficult to establish and there may be different uses of the site by successive occupations.

Radiocarbon dates from this block indicate two occupations separated in time by some 300 years. XU 181 – 405/110 BP and XU 184 – 780/110 BP.

Scope and Content:

Sub-series has been divided into sub sub series including: Lovstrom Block H 1988 and Lovstrom Block H 1991.

Name Access: Lovstrom Block H - summary

Subject Access: Archaeology  
Lovstrom locale  
Lovstrom Block H



## Lovstrom Block B - summary

<http://archives.brandonu.ca/en/permalink/descriptions12479>

Part Of: RG 7 Beverley Nicholson fonds

Description Level: Sub-series

Series Number: 3.3

Accession Number: 1-2010

GMD: multiple media

Date Range: 1987

History /

Biographical:

Block B consisted of 20 contiguous 1m<sup>2</sup> units excavated to 30 cm below surface. (except unit 58 which was excavated to 35 cm bs to obtain extended soil profile). The block is situated in recent oak and poplar forest at the head of a ravine leading to Jock's Creek, adjacent to an area cleared for market gardening. As was the case with Block A, the understory is heavily overgrown with hazelnut, chokecherry, saskatoon, and a poison ivy/sarsaparilla ground cover.

The soil levels below the sod in Block B consisted of a black, silty, and gritty loam layer from 5 cm to 23 cm below surface, a yellow and sandy clay from 23 cm to 30 cm below surface, and glacial till at 30 cm below surface. As in Block A, limestone cobbles were found throughout the occupation level around the bone. It is evident that bioturbation – primarily tree roots and rodent burrowing – have significantly altered patterns of original deposition of lithics, ceramics and small bone.

The faunal layer lay close to the surface, situated entirely in the black loam 5 cm – 23 cm below surface. The 23 cm depth also marked the end of the dark silty loam. At 10 cm below surface, a discernible patterning of the bone appeared. Concentrations of bone in narrow rows ran in an irregular pattern from the northwest to the southeast part of the block. This pattern was most apparent in the north end of the block which is the highest point in the block. In the same 1m<sup>2</sup> unit, patches of weathered, very poorly preserved bone would be found lying close to patches of well preserved bone. It is believed that this variability in preservation results from uneven rates of burial due to taphic activities of pocket gophers or other agents of bioturbation. The same pattern of uneven preservation occurs over much of the locale but is most evident in Block B.

Diagnostic lithics included eleven projectile points that were predominantly Plains or Prairie Side-notch types, but included two unnotched triangular points. Cord-wrapped impressed rim sherds and body sherds were recovered. The ceramics are variants of the Woodland Blackduck horizon.

RC dates: XU49 – 675/80 BP XU 59 – 705/75BP.

Scope and Content:

Sub-sub-sub series contains: Summary information of field methodology, number and co-ordinates of excavations, personnel and their staff position; Field journals are daily records of recoveries, features and activities at the site; Site records include excavation level and unit summaries, feature sheets, profiles; sample records and maps; Artifact catalogues are lists and identifications of all artifacts recovered; Photographs are of excavation units, features, the landscape and personnel.

Name Access: Lovstrom Block B - summary

Subject Access: Archaeology  
Lovstrom locale  
Lovstrom Block B



## Lovstrom Block C - summary

<http://archives.brandonu.ca/en/permalink/descriptions12517>

Part Of: RG 7 Beverley Nicholson fonds

Description Level: Sub-series

Series Number: 3.4

Accession Number: 1-2010

GMD: multiple media

Date Range: 1987

History /

Biographical:

Block C was situated in sparse oak forest with an understory of saskatoon, hazelnut and a thick ground cover of poison ivy and sarsaparilla. The block measured 3m and 3m and contained nine excavation units. All units were excavated to 35cm below surface. The soil horizons were much like the other blocks, except for a rusty brown stain in the first level, giving the upper black loam a mottled appearance. The brown patches were clay mixed with loam and were harder than the surrounding matrix. No definitive interpretation of these phenomena was attempted but this effect may be the result of natural brush or forest fires. Under the 5cm so d/humus (Ah) layer, the loam horizon extended approximately 5cm – 25 cm below surface, and averaged 20 cm thick. Bone was concentrated within this horizon between 10 cm – 20 cm below surface.

Block C was notable for its concentrations of articulated bison bone. Most noteworthy was an articulated unit composed of lumbar vertebrae, pelvis, and sacrum. Several thoracic vertebra/proximal rib end concentrations were also recovered. There were more vertebrae and rib sections recovered in the units in proportion to other bones. A few sherds, some debitage and a single Prairie Side-Notched point fragment were among the recoveries. Based on the quantity of bone, the density of the bone layer, and the articulated butchering units the area has been interpreted as a bone midden.

Faunal material was analysed by Jessica MacKenzie for her Honours Thesis: "A reconstruction of butchering processes in Block C from the Lovstrom site DjLx-1 in Southwestern Manitoba."

Radiocarbon date: 850/115BP XU 79.

Scope and Content:

Sub-sub-sub series contains: Summary information of field methodology, number and co-ordinates of excavations, personnel and their staff position; Field journals are daily records of recoveries, features and activities at the site; Site records include excavation level and unit summaries, feature sheets, profiles; sample records and maps; Artifact catalogues are lists and identifications of all artifacts recovered; Photographs are of excavation units, features, the landscape and personnel.

Name Access: Lovstrom Block C - summary

Subject Access: Archaeology  
Lovstrom locale  
Lovstrom Block C



## Lovstrom Block E - summary

<http://archives.brandonu.ca/en/permalink/descriptions12567>

Part Of: RG 7 Beverley Nicholson fonds

Description Level: Sub-series

Series Number: 3.6

Accession Number: 1-2010

GMD: multiple media

Date Range: 1987 - 1991

History /

Biographical:

This site is situated in a naturally sheltered area with a low rise to the east and south partly encircling a flat area open to the west. Present natural vegetation is an open oak forest with a light understory of saskatoon, hazelnut, poison ivy and sarsaparilla. It is situated on the till plain at the upper end of a ravine leading to Jock's Creek.

Two test units six meters apart were excavated in 1987 and produced cultural materials which warranted a block excavation, so seven contiguous 1m<sup>2</sup> units were then opened. These units proved to be very productive of cultural remains. Subsequent excavations in 1988 increased the number of excavated units to 21. In 1991 a further eight units were excavated for a total of 29 excavations and two test units. Excavations went deeper in this block than in Blocks C or B. Remains from the block included bison bone, bone tools, fire-cracked rock, ceramics, lithics including tools and debitage and a hearth. Another occupation was recovered in 1991 containing a hearth and living floor.

Radiocarbon samples have produced two distinct sets of radiocarbon dates from 1987 and 1988 excavations. There appears to be two or possibly three cultural horizons definable within this block.

An upper cultural horizon, located between 14-21 cm below surface, contains large bison bone and fire-cracked rock dating to 465/100B.P from XU 128.

A lower horizon in the 20-25 cm level contained FCR, bison bone and lithic scatter that was dated to 675/70 B.P. from XU 122 and 715/110 from XU 114.

Scope and Content:

Sub-series has been divided into sub sub series including: Lovstrom Block E 1987, Lovstrom Block E 1988 and Lovstrom Block E 1991.

Name Access: Lovstrom Block E - summary

Subject Access: Archaeology  
Lovstrom locale  
Lovstrom Block E



## Lovstrom Block F - summary

<http://archives.brandonu.ca/en/permalink/descriptions12617>

Part Of: RG 7 Beverley Nicholson fonds

Description Level: Sub-series

Series Number: 3.7

Accession Number: 1-2010

GMD: multiple media

Date Range: 1988

History /

Biographical:

In 1988 four 1m<sup>2</sup> units were excavated in this Block F. The forest cover is identical to that of Block E, with an open oak forest with a light understory of saskatoon, hazelnut, poison ivy and sarsaparilla.

Underneath the litter mat (Ah) is a shallow, 15-20 cm "A" horizon of dark grey/brown silty loam with a high representation of pebble size clasts. The glacial clays, encountered at 20 cm below surface, consist of a matrix of light tan sandy clays containing rounded pebble to cobble size rocks.

The recoveries from this block consisted of a few ceramics, including Vickers Focus rim sherds, four lithic tools and a number of small bison bone fragments. There was no discernible cultural stratigraphy in the four 1m<sup>2</sup> units and the limited deposits of bone, ceramics and lithics were dispersed randomly throughout the 25 cm of cultural matrix. The lithic materials frequencies were similar to those in Block E with local cherts and KRF being the most abundant categories. A small amount of fire-cracked rock and a few large identifiable bison bones were recovered – all distributed randomly with little evidence for any pattern of clustering.

No RC dates.

Scope and Content:

Sub-sub-sub series contains: Summary information of field methodology, number and co-ordinates of excavations, personnel and their staff position; Field journals are daily records of recoveries, features and activities at the site; Site records include excavation level and unit summaries, feature sheets, profiles; sample records and maps; Artifact catalogues are lists and identifications of all artifacts recovered; Photographs are of excavation units, features, the landscape and personnel.

Name Access: Lovstrom Block F - summary

Subject Access: Archaeology  
Lovstrom locale  
Lovstrom Block F



## Lovstrom Block D 1987 - site co-ordinates

<http://archives.brandonu.ca/en/permalink/descriptions12542>

Part Of:	RG 7 Beverley Nicholson fonds
Description Level:	sub sub sub series
Series Number:	3.5.1.1
Accession Number:	1-2010
GMD:	multiple media
Date Range:	1987
Material Details:	Field journals have been scanned in multi-page PDF files. Artifact catalogues are PDF files in spreadsheet format. Photographs are in jpeg format.

### History /

#### Biographical:

Large scale excavations of five block sites took place in 1987 under the direction of Bev Nicholson with Jane Gibson as crew chief. Block D consisted of 2 excavation units.

#### Scope and Content:

Sub-sub-sub series contains: Summary information of field methodology, number and co-ordinates of excavations, personnel and their staff position.

Name Access:	Lovstrom Block D 1987 - site co-ordinates
Subject Access:	Archaeology Lovstrom locale Lovstrom Block D

## Documents

ABC W & L Lovstrom Locale 1987  
3.5.1.1 Summary Information

Large scale excavations of five block sites took place in 1987 under the direction of Bev Nicholson with Jane Gibson as crew chief.

Block D consisted of 2 excavation units. The initial plan was modified as 1987, a subsequent plan with the co-ordinates of 1987/1988 was used in the field as a complete replacement. The final plan was modified as per unit 1.

Excavation	Original Co-ords	Modified Co-ords	Crew
101-11	541642.21W	154625N	Paul Thompson
101-12	541642.19W	154625N	Paul Thompson

3.5.1.1\_Sum.pdf

Read PDF

Download PDF



## Lovstrom Block D 1988 - site co-ordinates

<http://archives.brandonu.ca/en/permalink/descriptions12555>

Part Of:	RG 7 Beverley Nicholson fonds
Description Level:	sub sub sub series
Series Number:	3.5.2.1
Accession Number:	1-2010
GMD:	multiple media
Date Range:	1988
Material Details:	Field journals have been scanned in multi-page PDF files. Artifact catalogues are PDF files in spreadsheet format. Photographs are in jpeg format.

### History /

#### Biographical:

Large scale excavations of five block sites took place in 1988 under the direction of Bev Nicholson with Ian Kuijt as crew chief. Four excavation units were added to Block D.

#### Scope and Content:

Sub-sub-sub series contains: Summary information of field methodology, number and co-ordinates of excavations, personnel and their staff position.

Name Access:	Lovstrom Block D 1988 - site co-ordinates
Subject Access:	Archaeology Lovstrom locale Lovstrom Block D

## Documents

ABC W & Lovstrom Locals 1988-4  
3.5.2.1 Lovstrom Block D  
3.5.2.1 Summary Information:  
Excavations continued in 1988 under the direction of Bev Nicholson with Ian Kuijt as crew chief.  
Four additional excavation units were excavated at Block D. The total datum was established as 1000.0, a reference datum with the coordinates of 1000.000 was used as further complete referencing. The block was divided into four units (1).

Excavation	Original Co-ords	Calculated Co-ords	Crew
101-88	1010011700	1010011700	Lovstrom Locals
102-88	1010011700	1010011700	Eden Locals
103-88	1010011700	1010011700	Eden Locals
104-88	1010011700	1010011700	Eden Locals

Further located in 101-88 and 102-88

3.5.2.1\_Sum.pdf

 Read PDF

 Download PDF



## Lovstrom Block D 1987 - site record XU 87

<http://archives.brandonu.ca/en/permalink/descriptions12533>

Part Of: RG 7 Beverley Nicholson fonds

Description Level: File

Series Number: 3.5.1.3

File Number: 1

Accession Number: 1-2010

Physical Description: 10 pages

Material Details: PDF

History /

Biographical:

Record of site excavation unit 87 at Lovstrom Block D.

Scope and Content:

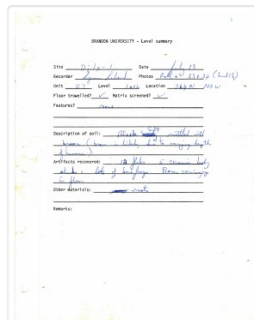
Site records of excavation units may include: level summaries, floor plans, feature sheets, wall profiles, unit summaries and any other additional information relating to the unit.

Name Access: Lovstrom Block D 1987 - site record XU 87

Subject Access: Archaeology  
Lovstrom locale  
Lovstrom Block D

## Documents

---



3.5.1.3.1\_Lov\_XU87.pdf

 Read PDF

 Download PDF



## Lovstrom Block D 1987 - Bev Nicholson field journal

<http://archives.brandonu.ca/en/permalink/descriptions12543>

Part Of: RG 7 Beverley Nicholson fonds

Description Level: File

Series Number: 3.5.1.2

File Number: 1

Accession Number: 1-2010

GMD: textual records

Date Range: 1987

Physical Description: 8 pp.

Material Details: PDF

History /

Biographical:

Bev Nicholson directed the excavations at the Lovstrom locale in 1987.

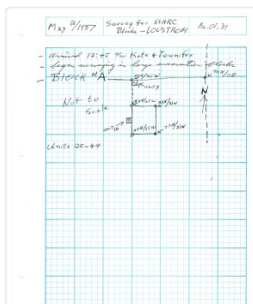
Scope and Content:

Record of excavation methods, items recovered, features, local environment and weather noted by teaching assistant.

Name Access: Lovstrom Block D 1987 - Bev Nicholson field journal

Subject Access: Archaeology  
Lovstrom locale  
Lovstrom Block D

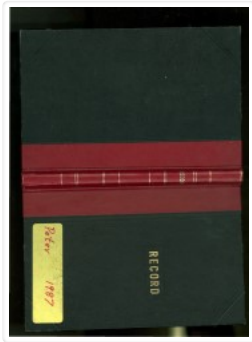
## Documents



3.5.1.2.1\_B\_Nicholson.  
pdf

 Read PDF

 Download PDF



## Lovstrom Block D 1987 - Peter Filopoulos field journal

<http://archives.brandonu.ca/en/permalink/descriptions12546>

Part Of: RG 7 Beverley Nicholson fonds

Description Level: File

Series Number: 3.5.1.2

File Number: 4

Accession Number: 1-2010

GMD: textual records

Date Range: 1987

Physical Description: 29 pp.

Material Details: PDF

History /

Biographical:

Peter Filopoulos excavated units 87 and 93 in Block D. Pages 19-29 in his journal.

Scope and Content:

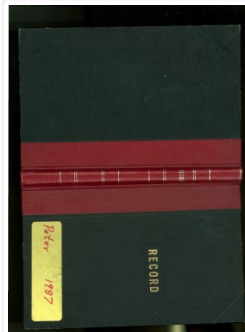
Record of excavation methods, items recovered, features, local environment and weather noted by teaching assistant.

Name Access: Lovstrom Block D 1987 - Peter Filopoulos field journal

Subject Access: Archaeology  
Lovstrom locale  
Lovstrom Block D

### Documents

---



3.5.1.2.4\_P\_Filopoulos.  
pdf

 Read PDF

 Download PDF