

# S. J. McKee Archives



## Bethel Church (1895) on Highways 2 & 21 west of Deleau, Manitoba.

<http://archives.brandonu.ca/en/permalink/descriptions10892>

Part Of: RG 11 Lawrence Stuckey fonds  
Creator: L.A. Stuckey  
Description Level: Item  
Series Number: 3.3  
Item Number: 1-2002.3.3.BSW[349a]  
Accession Number: 1-2002  
GMD: graphic  
Date Range: Aug 25, 1979  
Physical Description: 2.5" x 2.5" (b/w)  
Material Details: Negative

### History /

#### Biographical:

Mr. Stuckey's notes: 2 exterior and 3 windows.

#### Custodial History:

For custodial history see the collection level description of the Lawrence Stuckey collection.

#### Scope and Content:

Image of Bethel Church (1895) on Highways 2 & 21 west of Deleau, Manitoba.

Notes: [Brandon SW includes communities south of Trans-Canada #1 highway and west of PTH #10.] [Images 349a and 349b are images of the exterior of the church, and images 349c-349-e are images of the stained glass windows.]

Name Access: Bethel Church  
Deleau, Manitoba

Subject Access: churches

Repro Restriction: The McKee Archives is the copyright holder of the Stuckey materials.

Storage Location: Lawrence Stuckey collection

#### Arrangement:

Mr. Stuckey put five negatives in the same envelope. We have separated them and numbered them (349a) to (349e)].

## Images



## Bethel Church (1895) on Highways 2 & 21 west of Deleau, Manitoba.

<http://archives.brandonu.ca/en/permalink/descriptions10897>

Part Of: RG 11 Lawrence Stuckey fonds  
Creator: L.A. Stuckey  
Description Level: Item  
Series Number: 3.3  
Item Number: 1-2002.3.3.BSW[349b]  
Accession Number: 1-2002  
GMD: graphic  
Date Range: Aug 25, 1979  
Physical Description: 2.5" x 2.5" (b/w)  
Material Details: Negative

### History /

### Biographical:

Mr. Stuckey's notes: 2 exterior and 3 windows.

### Custodial History:

For custodial history see the collection level description of the Lawrence Stuckey collection.

### Scope and Content:

Image of Bethel Church (1895) on Highways 2 & 21 west of Deleau, Manitoba.

Notes: [Brandon SW includes communities south of Trans-Canada #1 highway and west of PTH #10.] [Images 349a and 349b are images of the exterior of the church, and images 349c-349-e are images of the stained glass windows.]

Name Access: Bethel Church  
Deleau, Manitoba

Subject Access: churches

Repro Restriction: The McKee Archives is the copyright holder of the Stuckey materials.

Storage Location: Lawrence Stuckey collection

### Arrangement:

Mr. Stuckey put five negatives in the same envelope. We have separated them and numbered them (349a) to (349e)].



**Bethel Church (1895) on Highways 2 & 21 west of Deleau, Manitoba.**

<http://archives.brandonu.ca/en/permalink/descriptions10901>

Part Of: RG 11 Lawrence Stuckey fonds  
Creator: L.A. Stuckey  
Description Level: Item  
Series Number: 3.3  
Item Number: 1-2002.3.3.BSW[349c]  
Accession Number: 1-2002  
GMD: graphic  
Date Range: Aug 25, 1979  
Physical Description: 2.5" x 2.5" (b/w)  
Material Details: Negative

History /

Biographical:

Mr. Stuckey's notes: 2 exterior and 3 windows.

Custodial History:

For custodial history see the collection level description of the Lawrence Stuckey collection.

Scope and Content:

Image of Bethel Church (1895) on Highways 2 & 21 west of Deleau, Manitoba.

Notes: [Brandon SW includes communities south of Trans-Canada #1 highway and west of PTH #10.] [Images 349a and 349b are images of the exterior of the church, and images 349c-349-e are images of the stained glass windows.]

Name Access: Bethel Church  
Deleau, Manitoba

Subject Access: churches

Repro Restriction: The McKee Archives is the copyright holder of the Stuckey materials.

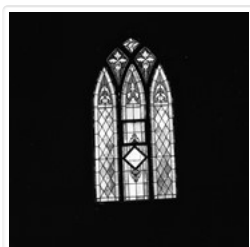
Storage Location: Lawrence Stuckey collection

Arrangement:

Mr. Stuckey put five negatives in the same envelope. We have separated them and numbered them (349a) to (349e)].

## Images

---



### Bethel Church (1895) on Highways 2 & 21 west of Deleau, Manitoba.

<http://archives.brandonu.ca/en/permalink/descriptions10904>

Part Of: RG 11 Lawrence Stuckey fonds  
Creator: L.A. Stuckey  
Description Level: Item  
Series Number: 3.3  
Item Number: 1-2002.3.3.BSW[349e]  
Accession Number: 1-2002  
GMD: graphic  
Date Range: Aug 25, 1979  
Physical Description: 2.5" x 2.5" (b/w)  
Material Details: Negative

History /

Biographical:

Mr. Stuckey's notes: 2 exterior and 3 windows.

Custodial History:

For custodial history see the collection level description of the Lawrence Stuckey collection.

Scope and Content:

Image of Bethel Church (1895) on Highways 2 & 21 west of Deleau, Manitoba.

Notes: [Brandon SW includes communities south of Trans-Canada #1 highway and west of PTH #10.] [Images 349a and 349b are images of the exterior of the church, and images 349c-349-e are images of the stained glass windows.]

Name Access: Bethel Church  
Deleau, Manitoba  
Subject Access: churches

Repro Restriction: The McKee Archives is the copyright holder of the Stuckey materials.

Storage Location: Lawrence Stuckey collection

Arrangement:

Mr. Stuckey put five negatives in the same envelope. We have separated them and numbered them (349a) to (349e)].

## Images

---





## Bethel Church (1895) on Highway 2-21 near Hartney Junction

<http://archives.brandonu.ca/en/permalink/descriptions10917>

Part Of: RG 11 Lawrence Stuckey fonds

Creator: L.A. Stuckey

Description Level: Item

Series Number: 3.3

Item Number: 1-2002.3.3.BSW[351]

Accession Number: 1-2002

GMD: graphic

Date Range: June 14, 1977

Physical Description: 2.5" x 2.75" (b/w)

Material Details: Negative

Custodial History:

For custodial history see the collection level description of the Lawrence Stuckey collection.

Scope and Content:

Image of Bethel Church (1895) on Highway 2-21 near Hartney Junction.

Notes: [Brandon SW includes communities south of Trans-Canada #1 highway and west of PTH #10.]

Name Access: Bethel Church

Hartney Junction

Subject Access: churches

Repro Restriction: The McKee Archives is the copyright holder of the Stuckey materials.

Storage Location: Lawrence Stuckey collection

### Images

---





## Dunston United Church, built 1895, near Miami, Manitoba

<http://archives.brandonu.ca/en/permalink/descriptions11129>

Part Of: RG 11 Lawrence Stuckey fonds

Creator: L.A. Stuckey

Description Level: Item

Series Number: 3.3

Item Number: 1-2002.3.3.BSE[365a]

GMD: graphic

Date Range: May 1, 1977

Physical Description: 2.5" x 2.25"

Material Details: Negative

Custodial History:

For custodial history see the collection level description of the Lawrence Stuckey collection.

Scope and Content:

Image of Dunston United Church, built 1895, near Miami, Manitoba.

Notes: [Brandon SE includes communities south of Trans-Canada #1 highway and east of PTH #10.]

Name Access: Dunston United Church

Miami, Manitoba

Subject Access: churches

Storage Location: Lawrence Stuckey collection

Arrangement:

[Mr. Stuckey put two negatives in the same envelope. We have separated them and numbered the negatives (365a) and (365b)].

### Images

---





## Anglican Church, Reston, Manitoba

<http://archives.brandonu.ca/en/permalink/descriptions10334>

Part Of: RG 11 Lawrence Stuckey fonds

Creator: L.A. Stuckey

Description Level: Item

Series Number: 3.3

Item Number: 1-2002.3.3.CPR[71]

Accession Number: 1-2002

GMD: graphic

Date Range: July 1, 1986

Physical Description: 2.5" x 2.75" (b/w)

Material Details: Negative

Custodial History:

For custodial history see the collection level description of the Lawrence Stuckey collection.

Scope and Content:

Image of the Anglican Church in Reston, Manitoba. Image was taken along the CPR lines south of the mainline.

Name Access: Reston

Reston Anglican Church

Subject Access: churches

Repro Restriction: The McKee Archives is the copyright holder of the Stuckey materials.

Storage Location: Lawrence Stuckey collection

### Images

---







## Church (stone), Minnedosa, Manitoba.

<http://archives.brandonu.ca/en/permalink/descriptions10673>

Part Of: RG 11 Lawrence Stuckey fonds

Creator: L.A. Stuckey

Description Level: Item

Series Number: 3.3

Item Number: 1-2002.3.3.CPR[106]

Accession Number: 1-2002

GMD: graphic

Date Range: January 29, 1979

Physical Description: 2.5" x 2.5" (b/w)

Material Details: Negative

### Custodial History:

For custodial history see the collection level description of the Lawrence Stuckey collection.

### Scope and Content:

Image of a stone church in Minnedosa, Manitoba. Image was taken along the CPR Minnedosa & Bredenburg subdivision (ex. Manitoba & N.W. Railway).

Notes: [The image appears to be an image of St. Mark's Anglican Church].

Name Access: Minnedosa, Manitoba

St. Mark's Anglican Church

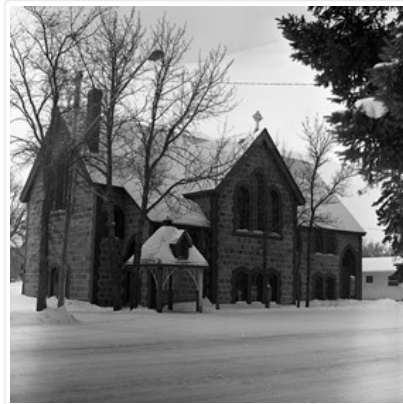
Subject Access: churches

Repro Restriction: The McKee Archives is the copyright holder of the Stuckey materials.

Storage Location: Lawrence Stuckey collection

## Images

---





## Calvary Church, Minnedosa, Manitoba.

<http://archives.brandonu.ca/en/permalink/descriptions10678>

Part Of: RG 11 Lawrence Stuckey fonds

Creator: L.A. Stuckey

Description Level: Item

Series Number: 3.3

Item Number: 1-2002.3.3.CPR[107]

Accession Number: 1-2002

GMD: graphic

Date Range: January 27, 1979

Physical Description: 2.5" x 2.5" (b/w)

Material Details: Negative

### Custodial History:

For custodial history see the collection level description of the Lawrence Stuckey collection.

### Scope and Content:

Image of Calvary Church, Minnedosa, Manitoba. Image was taken along the CPR Minnedosa & Bredenburg subdivision (ex. Manitoba & N.W. Railway).

Name Access: Minnedosa, Manitoba

Calvary Church

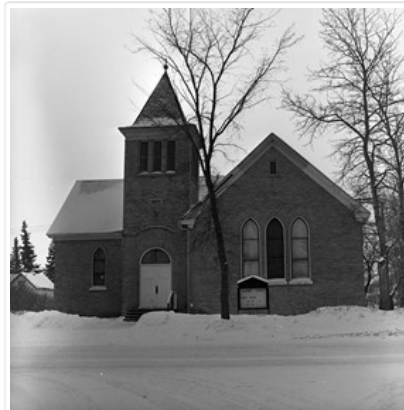
Subject Access: churches

Repro Restriction: The McKee Archives is the copyright holder of the Stuckey materials.

Storage Location: Lawrence Stuckey collection

## Images

---





## Church, Shoal Lake, Manitoba.

<http://archives.brandonu.ca/en/permalink/descriptions10765>

Part Of: RG 11 Lawrence Stuckey fonds

Creator: L.A. Stuckey

Description Level: Item

Series Number: 3.3

Item Number: 1-2002.3.3.CPR[125]

Accession Number: 1-2002

GMD: graphic

Date Range: February 12, 1979

Physical Description: 2.5" x2.5" (b/w)

Material Details: Negative

Custodial History:

For custodial history see the collection level description of the Lawrence Stuckey collection.

Scope and Content:

Image of a church, Shoal Lake, Manitoba. Image was taken along the CPR Minnedosa & Bredenbury subdivision (ex. Manitoba & N.W. Railway).

Name Access: CPR

Shoal Lake, Manitoba

Subject Access: churches

Repro Restriction: The McKee Archives is the copyright holder of the Stuckey materials.

Storage Location: Lawrence Stuckey collection

### Images

---





## Lorne Avenue, looking west from St. Augustine's Church postcard

<http://archives.brandonu.ca/en/permalink/descriptions13937>

Part Of: Fred McGuinness collection

Creator: Photograph by: J.V.

Description Level: Item

Series Number: McG 9

Item Number: 1-2015.9

Accession Number: 1-2015

GMD: graphic

Date Range: 1952

Physical Description: 5.5" x 3.5" (colour)

Material Details: postcard

### Scope and Content:

Photograph shows a western view of the residential area along Lorne Avenue from St. Augustine's Roman Catholic Church. Roof-tops of Central School, First Baptist, Brandon College, Manitoba Power Plant, and Old City Hall are visible.

Notes: Writing on the front of the postcard reads: Lorne Avenue, looking West from St. Augustine's R.C. Church, Brandon, Man. Writing on the back of the postcard reads: The Valentine & Sons Publishing Ltd., Montreal and London, Printed in Great Britain. A cancelled George VI purple Canada 3 cent stamp has been postmarked: Brandon SP 11 52.

Name Access: Lorne Avenue

Subject Access: residential streets

residences

churches

Storage Location: RG 5 photograph storage drawer 2 (hanging photos)

### Arrangement:

McG BR#9 - "Ashgrove Farms CBC"

## Images

---





## Small church, Shoal Lake, Manitoba.

<http://archives.brandonu.ca/en/permalink/descriptions10766>

Part Of: RG 11 Lawrence Stuckey fonds

Creator: L.A. Stuckey

Description Level: Item

Series Number: 3.3

Item Number: 1-2002.3.3.CPR[126]

Accession Number: 1-2002

GMD: graphic

Date Range: February 12, 1979

Physical Description: 2.5" x2.75" (b/w)

Material Details: Negative

Custodial History:

For custodial history see the collection level description of the Lawrence Stuckey collection.

Scope and Content:

Image of a small church, Shoal Lake, Manitoba. Image was taken along the CPR Minnedosa & Bredenbury subdivision (ex. Manitoba & N.W. Railway).

Name Access: CPR

Shoal Lake, Manitoba

Subject Access: churches

Repro Restriction: The McKee Archives is the copyright holder of the Stuckey materials.

Storage Location: Lawrence Stuckey collection

### Images

---





## Ukrainian RC Church, Holy Ascension, Minnedosa, Manitoba.

<http://archives.brandonu.ca/en/permalink/descriptions10668>

Part Of: RG 11 Lawrence Stuckey fonds

Creator: L.A. Stuckey

Description Level: Item

Series Number: 3.3

Item Number: 1-2002.3.3.CPR[105]

Accession Number: 1-2002

GMD: graphic

Date Range: October 27, 1985

Physical Description: 2.5" x 2.75" (b/w)

Material Details: Negative

### Custodial History:

For custodial history see the collection level description of the Lawrence Stuckey collection.

### Scope and Content:

Image of Holy Ascension Ukrainian RC Church, Minnedosa, Manitoba. Image was taken along the CPR Minnedosa & Bredenbury subdivision (ex. Manitoba & N.W. Railway).

Name Access: Minnedosa, Manitoba

Holy Ascension Ukrainian Catholic Church

Subject Access: churches

Repro Restriction: The McKee Archives is the copyright holder of the Stuckey materials.

Storage Location: Lawrence Stuckey collection

## Images

---





## St. Agnes Anglican (1902) Church and manse, Carberry, Manitoba.

<http://archives.brandonu.ca/en/permalink/descriptions10626>

Part Of: RG 11 Lawrence Stuckey fonds

Creator: L.A. Stuckey

Description Level: Item

Series Number: 3.3

Item Number: 1-2002.3.3.CPR[97b]

Accession Number: 1-2002

GMD: graphic

Date Range: December 12, 1978

Physical Description: 2.5"x2.5"

Material Details: Negative

Custodial History:

For custodial history see the collection level description of the Lawrence Stuckey collection.

Scope and Content:

Image of St. Agnes Anglican (1902) Church and manse, Carberry, Manitoba. Image was taken along the CPR Carberry Subdivision track.

Notes: [Mr. Stuckey put four negatives in the same envelope. We have separated them and numbered them (97a) to (97d)].

Name Access: Carberry, Manitoba

St. Agnes Anglican Church

Subject Access: Church buildings  
churches

Repro Restriction: The McKee Archives is the copyright holder of the Stuckey materials.

Storage Location: Lawrence Stuckey collection

### Images

---





## St. Agnes Anglican (1902) Church and manse, Carberry, Manitoba.

<http://archives.brandonu.ca/en/permalink/descriptions10630>

Part Of: RG 11 Lawrence Stuckey fonds

Creator: L.A. Stuckey

Description Level: Item

Series Number: 3.3

Item Number: 1-2002.3.3.CPR[97c]

Accession Number: 1-2002

GMD: graphic

Date Range: December 12, 1978

Physical Description: 2.5"x2.25"

Material Details: Negative

Custodial History:

For custodial history see the collection level description of the Lawrence Stuckey collection.

Scope and Content:

Image of St. Agnes Anglican (1902) Church and manse, Carberry, Manitoba. Image was taken along the CPR Carberry Subdivision track.

Notes: [Mr. Stuckey put four negatives in the same envelope. We have separated them and numbered them (97a) to (97d)].

Name Access: Carberry, Manitoba

St. Agnes Anglican Church

Subject Access: Church buildings  
churches

Repro Restriction: The McKee Archives is the copyright holder of the Stuckey materials.

Storage Location: Lawrence Stuckey collection

### Images

---







## St. Agnes Anglican (1902) Church and manse, Carberry, Manitoba.

<http://archives.brandonu.ca/en/permalink/descriptions10629>

Part Of: RG 11 Lawrence Stuckey fonds  
Creator: L.A. Stuckey  
Description Level: Item  
Series Number: 3.3  
Item Number: 1-2002.3.3.CPR[97a]  
Accession Number: 1-2002  
GMD: graphic  
Date Range: December 12, 1978  
Physical Description: 2.5"x2.5"  
Material Details: Negative  
Custodial History:

For custodial history see the collection level description of the Lawrence Stuckey collection.

### Scope and Content:

Image of St. Agnes Anglican (1902) Church and manse, Carberry, Manitoba. Image was taken along the CPR Carberry Subdivision track.

Notes: [Mr. Stuckey put four negatives in the same envelope. We have separated them and numbered them (97a) to (97d)].

Name Access: Carberry, Manitoba

St. Agnes Anglican Church

Subject Access: Church buildings

churches

houses

Repro Restriction: The McKee Archives is the copyright holder of the Stuckey materials.

Storage Location: Lawrence Stuckey collection

## Images

---





## English Church, Killarney

<http://archives.brandonu.ca/en/permalink/descriptions13910>

Part Of: Fred McGuinness collection  
Creator: Photographer: Winnipeg Photo Company  
Description Level: Item  
Series Number: McG 9  
Item Number: 20-2009.220  
Accession Number: 20-2009  
GMD: graphic  
Date Range: 1908  
Physical Description: 5.5" x 3.5" (b/w)  
Material Details: postcard  
Physical Condition: Photocard has been mailed  
Scope and Content:

Photograph shows the English Church in Killarney, Manitoba. The entrance to the brick structure is obscured by trees.

Notes: Writing on the front of the postcard reads: English Church, Killarney, Copyright Canada 1908 by Winnipeg Photo Company, No. 3. Writing on the back of the postcard reads: Photo Post Card by Winnipeg Photo Co., Napinka, Man. The postcard is addressed to Miss Annie Pope of 638 Pacific Avenue, Brandon. A green one cent King George stamp is postmarked Killarney Manitoba 22 July 1908.

Name Access: Killarney, Manitoba  
Church of England

Subject Access: churches

Storage Location: RG 5 photograph storage drawer 2 (hanging photos)

Arrangement:

From 20-2009 #4 plastic envelope #2

### Images

---





## Hornerite Church, southwest of Carnduff, Saskatchewan

<http://archives.brandonu.ca/en/permalink/descriptions10856>

Part Of: RG 11 Lawrence Stuckey fonds

Creator: L.A. Stuckey

Description Level: Item

Series Number: 3.3

Item Number: 1-2002.3.3.BSW[340a]

Accession Number: 1-2002

GMD: graphic

Date Range: Aug 26, 1979

Physical Description: 2.5" x 2.75" (b/w)

Material Details: Negative

### History /

#### Biographical:

Mr. Stuckey's notes: Built 1901. This sect has apparently died out (a Holy Roller sect).

#### Custodial History:

For custodial history see the collection level description of the Lawrence Stuckey collection.

#### Scope and Content:

Image of Homerite Church, southwest of Carnduff, Saskatchewan.

Notes: [Brandon SW includes communities south of Trans-Canada #1 highway and west of PTH #10.]

Name Access: Hornerite Church  
Carnduff, Saskatchewan

Subject Access: churches

Repro Restriction: The McKee Archives is the copyright holder of the Stuckey materials.

Storage Location: Lawrence Stuckey collection

#### Arrangement:

[Mr. Stuckey put two negatives in the same envelope. We have separated them and numbered them (340a) to (340b)].

## Images

---





## Hornerite Church, southwest of Carnduff, Saskatchewan

<http://archives.brandonu.ca/en/permalink/descriptions10857>

Part Of: RG 11 Lawrence Stuckey fonds

Creator: L.A. Stuckey

Description Level: Item

Series Number: 3.3

Item Number: 1-2002.3.3.BSW[340b]

Accession Number: 1-2002

GMD: graphic

Date Range: Aug 26, 1979

Physical Description: 2.5" x 2.5" (b/w)

Material Details: Negative

### History /

#### Biographical:

Mr. Stuckey's notes: Built 1901. This sect has apparently died out (a Holy Roller sect).

#### Custodial History:

For custodial history see the collection level description of the Lawrence Stuckey collection.

#### Scope and Content:

Image of Homerite Church, southwest of Carnduff, Saskatchewan.

Notes: [Brandon SW includes communities south of Trans-Canada #1 highway and west of PTH #10.]

Name Access: Hornerite Church  
Carnduff, Saskatchewan

Subject Access: churches

Repro Restriction: The McKee Archives is the copyright holder of the Stuckey materials.

Storage Location: Lawrence Stuckey collection

#### Arrangement:

[Mr. Stuckey put two negatives in the same envelope. We have separated them and numbered them (340a) to (340b)].

## Images

---





## Christmas at St. Matthews Church

<http://archives.brandonu.ca/en/permalink/descriptions10201>

Part Of: RG 12 Brandon and Area Photograph Collection

Description Level: Item

Series Number: 6

Item Number: BAPC 6.3

Accession Number: 4-1997

GMD: graphic

Date Range: 1886

Physical Description: 4.5" x 7" (b/w)

Material Details: On matting

Custodial History:

Donated to the Brandon College Library by Hilda Hesson in 1967.

Scope and Content:

Christmas 1886. St. Matthews Church in Brandon, MB

Notes: Writing on the back of the photo reads: Rector, Rev. E.P. Flewelling. The name W. Peters and other illegible words are also written.

Name Access: St. Matthews Church

Subject Access: Christmas  
churches

Storage Location: BAPC photograph drawer

### Images

---

