

S. J. McKee Archives



Assiniboine Ave. Ramp to First Street Bridge

<http://archives.brandonu.ca/en/permalink/descriptions9159>

Part Of: RG 11 Lawrence Stuckey fonds

Creator: Geo. Harris

Description Level: Item

Series Number: 3.1

Item Number: 1-2002.3.1BA4

Accession Number: 1-2002

GMD: graphic

Date Range: November 1937

Physical Description: 3 1/2" x 5"

Material Details: Negative

Custodial History:

For custodial history see the collection level description of the Lawrence Stuckey collection.

Scope and Content:

Assiniboine Avenue ramp to First Street bridge, including CPR Extra 5178 West

Notes: Copy: LAS

Name Access: Assiniboine Ave. Ramp to First Street Bridge

Subject Access: manmade geographic features

bridges

Transportation

rail transportation

railways

trains

Brandon Second First-Street Bridge

Repro Restriction: The McKee Archives is the copyright holder for the Stuckey materials.

Location Copy: 1-2002.3.9.103

Storage Location: Lawrence Stuckey collection

Images





Stockton Ferry, Stockton, Manitoba

<http://archives.brandonu.ca/en/permalink/descriptions11022>

Part Of: RG 11 Lawrence Stuckey fonds

Creator: L.A. Stuckey

Description Level: Item

Series Number: 3.3

Item Number: 1-2002.3.3.BSE[361]

GMD: graphic

Date Range: May 23, 1981

Physical Description: 2.5" x 2.5"

Material Details: Negative

Custodial History:

For custodial history see the collection level description of the Lawrence Stuckey collection.

Notes: [Brandon SE includes communities south of Trans-Canada #1 highway and east of PTH #10.]

Name Access: Assiniboine River
Stockton, Manitoba
Stockton Ferry

Subject Access: ferries
Transportation
water transportation
ferry services
Rivers

Storage Location: Lawrence Stuckey collection

Images



Assiniboine River; Treesbank Ferry - Stockton Ferry

<http://archives.brandonu.ca/en/permalink/descriptions11023>

Part Of: RG 11 Lawrence Stuckey fonds

Creator: L.A. Stuckey



Description Level: Item
Series Number: 3.3
Item Number: 1-2002.3.3.BSE[362a]
GMD: graphic
Date Range: May 23, 1981
Physical Description: 2.5" x 2.5"
Material Details: Negative

History /
Biographical:

Mr. Stuckey's notes: Jacques Wendover and Errol Bredin.

Custodial History:

For custodial history see the collection level description of the Lawrence Stuckey collection.

Scope and Content:

Image of Assiniboine River; Treesbank Ferry - Stockton Ferry.

Notes: [Brandon SE includes communities south of Trans-Canada #1 highway and east of PTH #10.]

Name Access: Assiniboine River
Stockton, Manitoba
Stockton Ferry
Treesbank Ferry
Jacques Wendover
Errol Bredin

Subject Access: ferries
Transportation
water transportation
ferry services
Rivers

Storage Location: Lawrence Stuckey collection

Arrangement:

[Mr. Stuckey put four negatives in the same envelope. We have separated them and numbered the negatives (362a) to (362d)].

Images





Assiniboine River; Treesbank Ferry - Stockton Ferry

<http://archives.brandonu.ca/en/permalink/descriptions11024>

Part Of: RG 11 Lawrence Stuckey fonds

Creator: L.A. Stuckey

Description Level: Item

Series Number: 3.3

Item Number: 1-2002.3.3.BSE[362b]

GMD: graphic

Date Range: May 23, 1981

Physical Description: 2.5" x 2.5"

Material Details: Negative

History /

Biographical:

Mr. Stuckey's notes: Jacques Wendover and Errol Bredin.

Custodial History:

For custodial history see the collection level description of the Lawrence Stuckey collection.

Scope and Content:

Image of Assiniboine River; Treesbank Ferry - Stockton Ferry.

Notes: [Brandon SE includes communities south of Trans-Canada #1 highway and east of PTH #10.]

Name Access: Assiniboine River
Stockton, Manitoba
Stockton Ferry
Treesbank Ferry
Jacques Wendover
Errol Bredin

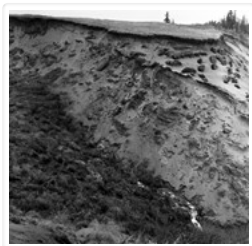
Subject Access: ferries
Transportation
water transportation
ferry services
Rivers

Storage Location: Lawrence Stuckey collection

Arrangement:

[Mr. Stuckey put four negatives in the same envelope. We have separated them and numbered the negatives (362a) to (362d)].

Images



Assiniboine River; Treesbank Ferry - Stockton Ferry

<http://archives.brandonu.ca/en/permalink/descriptions11025>

Part Of: RG 11 Lawrence Stuckey fonds
Creator: L.A. Stuckey
Description Level: Item
Series Number: 3.3
Item Number: 1-2002.3.3.BSE[362c]
GMD: graphic
Date Range: May 23, 1981
Physical Description: 2.5" x 2.5"
Material Details: Negative

History /

Biographical:

Mr. Stuckey's notes: Jacques Wendover and Errol Bredin.

Custodial History:

For custodial history see the collection level description of the Lawrence Stuckey collection.

Scope and Content:

Image of Assiniboine River; Treesbank Ferry - Stockton Ferry.

Notes: [Brandon SE includes communities south of Trans-Canada #1 highway and east of PTH #10.]

Name Access: Assiniboine River
Stockton, Manitoba
Stockton Ferry
Treesbank Ferry
Jacques Wendover
Errol Bredin

Subject Access: ferries
Transportation
water transportation
ferry services
Rivers

Storage Location: Lawrence Stuckey collection

Arrangement:

[Mr. Stuckey put four negatives in the same envelope. We have separated them and numbered the negatives (362a) to (362d)].

Images



Assiniboine River; Treesbank Ferry - Stockton Ferry

<http://archives.brandonu.ca/en/permalink/descriptions11026>

Part Of: RG 11 Lawrence Stuckey fonds
Creator: L.A. Stuckey
Description Level: Item
Series Number: 3.3
Item Number: 1-2002.3.3.BSE[362d]
GMD: graphic
Date Range: May 23, 1981
Physical Description: 2.5" x 2.5"
Material Details: Negative

History /

Biographical:

Mr. Stuckey's notes: Jacques Wendover and Errol Bredin.

Custodial History:

For custodial history see the collection level description of the Lawrence Stuckey collection.

Scope and Content:

Image of Assiniboine River; Treesbank Ferry - Stockton Ferry.

Notes: [Brandon SE includes communities south of Trans-Canada #1 highway and east of PTH #10.]

Name Access: Assiniboine River
Stockton, Manitoba
Stockton Ferry
Treesbank Ferry
Jacques Wendover
Errol Bredin

Subject Access: ferries
Transportation
water transportation
ferry services
Rivers

Storage Location: Lawrence Stuckey collection

Arrangement:

[Mr. Stuckey put four negatives in the same envelope. We have separated them and numbered the negatives (362a) to (362d)].

Images



Lawrence Stuckey slide collection

<http://archives.brandonu.ca/en/permalink/descriptions9512>

Part Of: RG 11 Lawrence Stuckey fonds
Description Level: Series
Series Number: 2
Accession Number: 1-2002
GMD: graphic
Date Range: 1954-1982
Physical Description: approximately 3838 colour slides

History /

Biographical:

For history/bio information see the collection level description of the Lawrence Stuckey collection.

Custodial History:

For custodial history see the collection level description of the Lawrence Stuckey collection.

Scope and Content:

Series consists of slides created from photographs taken by Lawrence Stuckey during his travels throughout Manitoba, other parts of Canada and the United States. Although Lawrence and his wife Mavis travelled for pleasure, their destinations were often chosen deliberately to enable Lawrence to explore and photograph specific landscapes, flora and fauna.

Name Access: Glendenning
 Assiniboine River
 Souris River
 Sidney
 Manitoba
 Whiteshell
 Carberry Hills
 Baldhead Hills
 Sprucewoods
 Duck Mountains
 Rossgburn
 Thompson
 Kelsey Trail
 E.T. Seton Park
 Steeprock Bay
 Steeprock River
 Flin Flon
 Rocky Lake
 Lake Winnipegosis
 Turtle Mountains
 Riding Mountain National Park
 Moon Lake
 Lake Katherine
 Clear Lake
 Arrowhead Trail
 B&B Trail
 Ominik Trail
 Gorge Creek
 Scarborough
 Ontario
 Edwards Gardens
 Royal Botanical Gardens
 Prince Albert
 Saskatoon
 Lake Madge
 Winnipeg
 Saskatchewan
 International Peace Gardens
 South Dakota

Black Hills
North Dakota
Quebec
Kenora
Qu'Appelle Valley
Theodore Roosevelt National Monument
Toronto
Point Pelee
Port Dover
Windsor
Yellowstone National Park
Wyoming
Ottawa
Scotsbluff
Nebraska
Mt. Evans Road
Colorado
Berthoud Pass
Milner Pass
Dinosaur Park
Trail Ridge
Rollins Pass
Grand Teton
Beartooth Pass
Craters of the Moon
Idaho
Medicine Bow National Fort
Michigan
Wisconsin
Quebec City
Mont. Tremblant Park
Sugar Camp
Satine-Anne-de-Bellevue Canal
Montreal
Banff National Park
Larch Valley
Sentinel Pass
Lake Louise
Moraine Lake
Athabaska River
Plain of Six
Columbia Icefields
Bow River
Victoria Glacier
Yoho Pass

Yoho National Park
Wapta Falls
Hoodoo Park
Waterfall Valley
Highline Trail
Burgess Pass
Takakaw Falls
Kicking Horse
Skyline Trail
Waterton Lakes National Park
Emerald Lake
Yoho Valley
Twin Falls Creek
Trans Canada Highway

Subject Access:	<p>geographic features</p> <p>manmade geographic features</p> <p>natural geographic features</p> <p>political geographic features</p> <p>natural phenomena</p> <p>natural waterways</p> <p>bridges</p> <p>canals</p> <p>mines</p> <p>roads</p> <p>trails</p> <p>monuments</p> <p>historical markers</p> <p>lakes</p> <p>mountains</p> <p>national parks</p> <p>parks</p> <p>hills</p> <p>valleys</p> <p>Rivers</p> <p>cities</p> <p>towns</p> <p>landscapes</p> <p>creeks</p> <p>gardens</p> <p>Plants</p> <p>trees</p> <p>badlands</p> <p>glaciers</p> <p>icefields</p> <p>hoodoos</p> <p>waterfalls</p> <p>beaches</p> <p>forests</p>
Accruals:	Additional slides of flora and fauna taken by Stuckey during his travels are housed in the McKee Archives. Those slides are unprocessed at present.
Repro Restriction:	The McKee Archives is the copyright holder for the Stuckey materials.
Storage Location:	Lawrence Stuckey collection