

# S. J. McKee Archives



## Lawrence Stuckey photograph collection - Brandon history

<http://archives.brandonu.ca/en/permalink/descriptions9030>

Part Of: RG 11 Lawrence Stuckey fonds

Creator: Many of the images presented were captured by Mr. Stuckey himself. However being a well known and accomplished photographer and amateur historian, he also bought, sold and traded negatives with other collectors. Therefore the viewer is reminded that many images, although part of his collection, were created and/or provided for Mr. Stuckey by other collectors. In addition, it is believed that some images contained within his collection were created by photographing a pre-existing negative or print. We have attempted to note the authorship of all images when possible.

Description Level: Sub-series

Series Number: 3.1

Accession Number: 1-2002

GMD: graphic

History /

Biographical:

For history/bio information see the collection level description of the Lawrence Stuckey collection.

Custodial History:

For custodial history see the collection level description of the Lawrence Stuckey collection.

Scope and Content:

This sub-series consists of photographic negatives related to the history of Brandon, Manitoba.

All of the images contained within this sub-series were part of Mr. Stuckey's lifelong personal collection of photographic negatives and prints. Images include those related to people, street scenes, buildings, various city departments and so forth.

Notes:

All of the images from Mr. Stuckey's collection of negatives and prints were reproduced and digitized using an Epson scanner and software suite. All attempts have been made to reproduce the images in such a manner that balances our desire to portray the negatives and photographs as they originally appear, with the need to create an optimal digital image for viewing. Therefore it is noted that minor alterations to image size and contrast have occurred.

With few exceptions, all digitizing and database entry of images and descriptions was conducted during the summer of 2009 at Brandon University by Patrick Elves.

Repro Restriction: The McKee Archives is the copyright holder for the Stuckey materials.

Storage Location:      Lawrence Stuckey collection

Arrangement:

Unless otherwise noted, the arrangement of these images was drawn from the original classification scheme used by Mr. Stuckey.

The information specific to each image, for the most part, was gained from Mr. Stuckey's personal notes regarding that particular photograph or similar photograph. Observations or notes contained within square brackets are explanatory or missing materials that have been added by someone other than Mr. Stuckey.

We have attempted to present the information that accompanies each image in the same format as was used by Mr. Stuckey himself.

Subseries 1 - Brandon History

- A. People
- B. Bridges
- C. Streets
- D. Buildings
- E. Business
- F. Fire Dept.
- G. Hospitals
- H. Industries
- I. Streetcars
- J. Utilities
- K. Construction
- L. Transportation (other than rail)
- M. Exhibition
- N. Misc. History
- O. Environs
- P. Railroads



## Brandon University campus

<http://archives.brandonu.ca/en/permalink/descriptions7998>

Part Of: Brandon University Photograph collection

Description Level: Item

Series Number: 2.1

Item Number: BUPC 2.1.64

GMD: graphic

Date Range: c. 1993

Physical Description: 6" x 4" (colour)

Scope and Content:

Photograph was taken from the roof of the Library and shows the walkway and flower bed on the southeast corner of the George T. Richardson Centre. The Physical Plant H-Hut is visible in the top right hand corner.

Subject Access: campus photographs

### Images

---





## Brandon University campus

<http://archives.brandonu.ca/en/permalink/descriptions7999>

Part Of: Brandon University Photograph collection

Description Level: Item

Series Number: 2.1

Item Number: BUPC 2.1.65

GMD: graphic

Date Range: c. 1993

Physical Description: 4" x 6" (colour)

Scope and Content:

View is southwest from the roof of the George T. Richardson Centre. Photograph shows the curved glass wall of the John E. Robbins Library, the walkway between the Library and the Dining Hall, the Dining Hall and Darrach Hall.

Subject Access: campus photographs  
campus buildings

### Images

---



## Lawrence Stuckey photograph collection

<http://archives.brandonu.ca/en/permalink/descriptions4796>

Part Of: RG 11 Lawrence Stuckey fonds

Description Level: Series

Series Number: 3

Accession Number: 1-2002

GMD: graphic

Date Range: ca. 1885 to 1991; predominantly 1960-1991

Physical Description: c. 2700 photograph negatives;  
c. 100 b/w prints

History /

Biographical:

For history/bio information see the fonds level description of the Lawrence Stuckey collection.

Custodial History:

The entire collection was housed in Mr. Stuckey's residence at 658 11th St. Brandon, Manitoba, prior to its transfer to the McKee Archives. The balance of the materials, including the photograph negative collection, was deposited in the Archives following Mr. Stuckey's death. Some of the negatives came into Mr. Stuckey's possession when he acquired the Clark J. Smith Studio, Brandon, Man.

Scope and Content:

Created by Lawrence A. Stuckey, the collection includes some of his own photography. Stuckey took many of the photos during his travels in Southwestern Manitoba and further afield. As well, he acquired copies of negatives that fit his interest from friends, contemporaries, and other professional photographers. The majority of these copies are of photographs that predate Stuckey's era.

The collection includes various subjects from Brandon's history (including people, buildings, transportation, railways, and institutions) 1879 to 1992; surrounding communities, railway lines and trains 1925 to 1989; agriculture ca. 1890 to 1983; railway photographs including the Prairie Dog Central, grain cars and various railways, including Canadian Pacific, Canadian National, Great Northern, and Brandon, Saskatchewan & Hudson's Bay, ca. 1900 to 1992; vehicles, planes, and ships ca. 1940 to 1981; personal photographs including friends, travel and other personal interests.

The series has been divided into nine sub-series, including: (1) Brandon history; (2) Westbran project parks; (3) Rural archives; (4) History - miscellaneous (including Walker collection); (5) Grain cars; (6) The prairie dog; (7) Personal interests; (8) Lawrence Stuckey; and (9) Unsorted.

Notes: Funding for series three level descriptions and digitizing of the Lawrence Stuckey fonds has been provided courtesy of a generous grant from the Heritage Grants Advisory Council of the Manitoba Government 2009.

Repro Restriction: The McKee Archives is the copyright holder for the Stuckey materials.

Finding Aid: A copy of the photograph inventory is in the blue binder on the reference shelf in the reading room.

Storage Location: Lawrence Stuckey collection

Arrangement:

Subseries 1 - Brandon History

- A. People
- B. Bridges
- C. Streets
- D. Buildings
- E. Business
- F. Fire Dept.
- G. Hospitals
- H. Industries
- I. Streetcars
- J. Utilities
- K. Construction
- L. Transportation (other than rail)
- M. Exhibition
- N. Misc. History
- O. Environs

C. L. McKee  
P. Railroads

Subseries 2 - Westbran Project Parks

Subseries 3 - Rural Archives

1. CPR

- North branches
- Broadview Sub. (Brandon-Broadview)
- CPR lines south of mainline
- Carberry Sub. (Winnipeg-Brandon)
- Minnedosa & Bredenbury Sub's (Ex. Man. & N.W. Ry.) (Portage la Prairie-Minnedosa-Bredenbury)

2. CNR

- Mainline, Rivers Sub. (Winnipeg-Melville)
- Gladstone Sub. (Portage-Neepawa)
- Wawanesa Sub. (Brandon [M&B Jct]-Belmont)
- Rapid City Sub. (Hallboro-Beulah)
- Rossburn Sub. (Neepawa-Russell)

3. Surrounding Communities

- Brandon NW
- Brandon NE
- Brandon SW
- Brandon SE

4. Agriculture (Steam)

5. Agriculture (Horse & Misc)

6. Agriculture (Miscellaneous)

Subseries 4 - History - Miscellaneous (inc. Walker Collection)

Subseries 5 - Grain Cars

Subseries 6 - The Prairie Dog

Subseries 7 - Personal Interests

Subseries 8 - Lawrence Stuckey

- Friends & Personal 1975-
- Travel
- Cars & Planes
- Ships
- Ships & Boats
- Great Lakes Seaway
- Ships & Canal, Duluth, Minn. Sept. 1980
- Windsor & Toronto 1980, 1981
- Welland Canal 1981



## Aerial view - Brandon University campus

<http://archives.brandonu.ca/en/permalink/descriptions7989>

Part Of: Brandon University Photograph collection  
Creator: Photograph commissioned by Brandon University and taken by Yourview Aerial Scenics Ltd.

Description Level: Item  
Series Number: 2.1  
Item Number: BUPC 2.1.55  
GMD: graphic  
Date Range: c. 2000  
Physical Description: 6" x 4" (colour)

### Scope and Content:

View is southwest from approximately 16th Street between Princess and Rosser Avenues. Photograph shows the Brandon University campus, as well as surrounding residential blocks, including Flemming, J.R. Reid and Vincent Massey schools.

Subject Access: aerial photographs  
campus photographs  
campus buildings  
Brandon streets

## Images

---





## Aerial view - Brandon University campus

<http://archives.brandonu.ca/en/permalink/descriptions7990>

Part Of: Brandon University Photograph collection  
Creator: Photograph commissioned by Brandon University and taken by Yourview Aerial Scenics Ltd.

Description Level: Item  
Series Number: 2.1  
Item Number: BUPC 2.1.56  
GMD: graphic  
Date Range: c. 2000  
Physical Description: 6" x 4" (colour)

### Scope and Content:

View is west southwest from approximately 16th Street between Princess and Lorne Avenues. Photograph shows the Brandon University campus, as well as surrounding residential blocks between 16th and 23rd Streets, Princess and Louise Avenues..

Subject Access: aerial photographs  
campus photographs  
campus buildings  
Brandon streets

## Images

---





## Aerial view - Brandon University campus

<http://archives.brandonu.ca/en/permalink/descriptions7991>

Part Of: Brandon University Photograph collection  
Creator: Photograph commissioned by Brandon University and taken by Yourview Aerial Scenics Ltd.

Description Level: Item  
Series Number: 2.1  
Item Number: BUPC 2.1.57  
GMD: graphic  
Date Range: c. 2000  
Physical Description: 6" x 4" (colour)

### Scope and Content:

View is west from approximately 17th Street between Lorne and Louise Avenues. Photograph shows a portion of the Brandon University campus (excluding the Education Building and anything north of it), as well as surrounding residential blocks from approximately 17th Street to 22nd Street.

Subject Access: aerial photographs  
campus photographs  
campus buildings  
Brandon streets

## Images

---





## Aerial view - Brandon University campus

<http://archives.brandonu.ca/en/permalink/descriptions7992>

Part Of: Brandon University Photograph collection

Description Level: Item

Series Number: 2.1

Item Number: BUPC 2.1.58

GMD: graphic

Date Range: c. 1990

Physical Description: 5" x 3.5" (colour)

Scope and Content:

View is west northwest from approximately 16th Street and Louise Avenue. Photograph shows the Brandon University campus, prior to the Library Extension, and a large portion of the city to the west of the campus.

Subject Access:

- aerial photographs
- campus photographs
- campus buildings
- Brandon streets

### Images

---





## Aerial view - Brandon University campus

<http://archives.brandonu.ca/en/permalink/descriptions7993>

Part Of: Brandon University Photograph collection

Description Level: Item

Series Number: 2.1

Item Number: BUPC 2.1.59

GMD: graphic

Date Range: c. 1990

Physical Description: 5" x 3.5" (colour)

### Scope and Content:

View is northwest from approximately 16th Street and Louise Avenue. Photograph shows the Brandon University campus, prior to the Library Extension, and a large portion of the city to the west of the campus.

Subject Access: aerial photographs  
campus photographs  
campus buildings  
Brandon streets



## Brandon University campus construction

<http://archives.brandonu.ca/en/permalink/descriptions8007>

Part Of: Brandon University Photograph collection

Description Level: Item

Series Number: 2.1

Item Number: BUPC 2.1.73

GMD: graphic

Date Range: c. 1996

Physical Description: 6" x 4" (colour)

Scope and Content:

View is southeast from the roof of Clark Hall. Photograph shows some of the scaffolding and materials, as well as the construction trailer (Bird Construction) located on the driveway during the restoration of Clark Hall and the Brandon College Building.

Subject Access: campus photographs

campus construction

### Images

---





## Brandon University campus construction

<http://archives.brandonu.ca/en/permalink/descriptions8008>

Part Of: Brandon University Photograph collection

Description Level: Item

Series Number: 2.1

Item Number: BUPC 2.1.74

GMD: graphic

Date Range: c. 1996

Physical Description: 6" x 4" (colour)

Scope and Content:

View is southwest from Clark Hall. Photograph shows the construction of the foundation of the extension of Clark Hall and various construction materials located in the courtyard.

Subject Access: campus photographs

campus construction

### Images

---





## Brandon University campus construction

<http://archives.brandonu.ca/en/permalink/descriptions8009>

Part Of: Brandon University Photograph collection

Description Level: Item

Series Number: 2.1

Item Number: BUPC 2.1.75

GMD: graphic

Date Range: c. 1996

Physical Description: 6" x 4" (colour)

Scope and Content:

View is west from Clark Hall. Photograph shows the construction of the foundation of the extension of Clark Hall.

Subject Access: campus photographs

campus construction

### Images

---





## Brandon University campus construction

<http://archives.brandonu.ca/en/permalink/descriptions8013>

Part Of: Brandon University Photograph collection

Description Level: Item

Series Number: 2.1

Item Number: BUPC 2.1.79

GMD: graphic

Date Range: c. 1996

Physical Description: 4" x 6" (colour)

Scope and Content:

View is north from the courtyard looking underneath the skywalk. Photograph shows the grading of the road between the Clark Hall extension and the A.E. McKenzie Building.

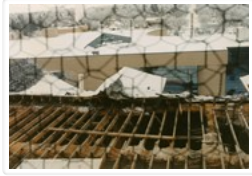
Subject Access: campus photographs

campus construction

### Images

---





## Brandon University campus construction

<http://archives.brandonu.ca/en/permalink/descriptions8015>

Part Of: Brandon University Photograph collection

Description Level: Item

Series Number: 2.1

Item Number: BUPC 2.1.81

GMD: graphic

Date Range: c. 1996

Physical Description: 6" x 4" (colour)

### Scope and Content:

View is west from the roof of the Brandon College Building. Photograph was taken through wire fencing and shows roof beams during construction on the roof of the Brandon College Building during winter. Part of the George T. Richardson Centre and the second steam plant are visible in the background, as well as a few houses.

Subject Access: campus photographs

campus construction

### Images

---





## Brandon University campus landscaping

<http://archives.brandonu.ca/en/permalink/descriptions8017>

Part Of: Brandon University Photograph collection

Description Level: Item

Series Number: 2.1

Item Number: BUPC 2.1.83

GMD: graphic

Date Range: c. 1993

Physical Description: 6" x 4" (colour)

Scope and Content:

Photograph shows a backhoe and a dump truck on the north side of McMaster Hall during the landscaping of the flower bed on the southeast corner of the George T. Richardson Centre (John E. Robbins Library). The Dining Hall is in the background.

Subject Access: campus photographs

campus buildings

### Images

---





## Brandon University campus construction

<http://archives.brandonu.ca/en/permalink/descriptions8024>

Part Of: Brandon University Photograph collection

Description Level: Item

Series Number: 2.1

Item Number: BUPC 2.1.90

GMD: graphic

Date Range: c. 1996

Physical Description: 6" x 4" (colour)

Scope and Content:

Image is looking north along the driveway in front of Clark Hall and the Brandon College Building, and shows building materials, equipment and debris. The photograph was taken during the renovations of the Brandon College Building and Clark Hall.

Subject Access: campus photographs

campus construction

### Images

---





## Brandon University campus construction

<http://archives.brandonu.ca/en/permalink/descriptions8025>

Part Of: Brandon University Photograph collection

Description Level: Item

Series Number: 2.1

Item Number: BUPC 2.1.91

GMD: graphic

Date Range: c. 1996

Physical Description: 4" x 6" (colour)

Scope and Content:

View is west from the sidewalk between the Brandon College Building and the Citizens' Science Building. Photograph shows an H-Hut, two trailers and general construction mayhem.

Subject Access: campus photographs

campus construction

### Images

---





## Brandon University campus

<http://archives.brandonu.ca/en/permalink/descriptions7997>

Part Of: Brandon University Photograph collection

Creator: Photographer: Sandy Black

Description Level: Item

Series Number: 2.1

Item Number: BUPC 2.1.63

GMD: graphic

Date Range: c. 1996

Physical Description: 6" x 4" (colour)

Scope and Content:

View is northwest from the roof of the John R. Brodie Science Centre. Photograph shows the roof of the Knowles Douglas Students' Union Centre, the Citizens' Science Building, and the Brandon College Building and Clark Hall during renovation.

Subject Access: campus photographs

campus buildings

campus construction

### Images

---





## Brandon University campus construction

<http://archives.brandonu.ca/en/permalink/descriptions8000>

Part Of: Brandon University Photograph collection

Creator: Photographer: Sandy Black

Description Level: Item

Series Number: 2.1

Item Number: BUPC 2.1.66

GMD: graphic

Date Range: c. 1996

Physical Description: 6" x 4" (colour)

Scope and Content:

View is southeast from the roof of the A.E. McKenzie Building. Photograph shows the construction of the extension of Clark Hall and the skywalk.

Subject Access: campus photographs

campus buildings

campus construction

### Images

---





## Brandon University campus construction

<http://archives.brandonu.ca/en/permalink/descriptions8001>

Part Of: Brandon University Photograph collection

Creator: Photographer: Sandy Black

Description Level: Item

Series Number: 2.1

Item Number: BUPC 2.1.67

GMD: graphic

Date Range: c. 1996

Physical Description: 6" x 4" (colour)

Scope and Content:

View is north probably from the roof of McMaster Hall. Photograph shows the construction of the extension of Clark Hall and the skywalk.

Subject Access: campus photographs

campus buildings

campus construction

### Images

---

