

# S. J. McKee Archives



## Crepeelee site 2008 - photographs

<http://archives.brandonu.ca/en/permalink/descriptions11964>

Part Of: RG 7 Beverley Nicholson fonds

Description Level: sub sub sub series

Series Number: 1.2.5.5

Accession Number: 1-2010

GMD: graphic

Date Range: 2008

Physical Description: 11 photographs

Material Details: JPEGs

### History /

### Biographical:

Numerous photographs were taken during the excavation of the Crepeelee site 2008. A selection of photographs of features and personnel performing usual field tasks such as surveying, measuring, excavating, and taking photographs were selected for the archive.

### Scope and Content:

Sub sub sub series consists of photographs taken during excavation of the Crepeelee site 2008.

Name Access: Crepeelee site 2008 - photographs

Subject Access: Archaeology  
Crepeelee locale  
Crepeelee site DiMe-29  
Crepeelee site 2008



## Crepeelee site 2008 - field journals

<http://archives.brandonu.ca/en/permalink/descriptions11808>

Part Of: RG 7 Beverley Nicholson fonds  
Description Level: sub sub sub series  
Series Number: 1.2.5.2  
Accession Number: 1-2010  
GMD: multiple media  
Date Range: 2007  
Material Details: Field journals have been scanned in multi-page PDF files.  
History /  
Biographical:

The Crepeelee site was identified from the results of the Casselman survey and excavated in 2003, 2004, 2005 and 2007.

In 2008 a small crew under the direction of Bev Nicholson returned to the site to gather further samples and verify profiles. Three units (XU 50, 51 and 52) were excavated. As well the Graham site 2008 was also excavated.

The field journals contain information about both the Crepeelee and Graham sites.

### Scope and Content:

Record of daily observations at the site including: excavation methods, items recovered, features, local environment and weather.

Name Access: Crepeelee site 2008 - field journals  
Subject Access: Archaeology  
Crepeelee locale  
Crepeelee site DiMe-29  
Crepeelee site 2008



## Crepeelee site 2008 - summary information

<http://archives.brandonu.ca/en/permalink/descriptions11773>

Part Of: RG 7 Beverley Nicholson fonds  
Description Level: sub sub sub series  
Series Number: 1.2.5.1  
Accession Number: 1-2010  
GMD: multiple media  
Date Range: 2008  
Material Details: Field journals have been scanned in multi-page PDF files. Artifact catalogues are PDF files in spreadsheet format. Photographs are in jpeg format.

History /

Biographical:

The Crepeelee site was identified from the results of the Casselman survey and excavated in 2003, 2004, 2005 and 2007.

In 2005 and 2007 the Brandon University Archaeology Field School was held at the Crepeelee site in the Crepeelee locale.

In 2008 a small crew returned to the site to gather further samples and verify profiles. Three units (XU 50, 51 and 52) were excavated with faunal (animal bone), lithics, fire cracked rock, diagnostic lithics and ceramics recovered from the site. There are 455 records in the artifact catalogue.

Scope and Content:

Sub-sub-sub series contains: Summary information of field methodology, number and co-ordinates of excavations, personnel and their staff position.

Name Access: Crepeelee site 2008 - summary information

Subject Access: Archaeology  
Crepeelee locale  
Crepeelee site DiMe-29  
Crepeelee site 2008

## Documents

ABR 30 U. Crepeelee Locale  
1.2.5 Crepeelee Site DiMe-29  
1.2.5.1 Crepeelee 2008  
1.2.5.1.1 Summary Information

Director: Bev Nicholson with Co-ord of Bill Fay, Andrew Lums & Kim Thornton

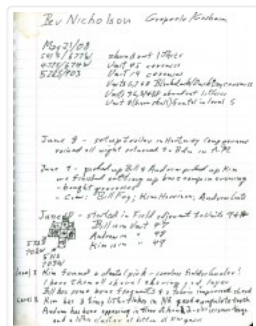
Excavation Unit	Contingent Coordinator	Excavator
XU 50	111005/500	Kim Thornton & Bill Fay
XU 51	111005/510	Andrew Lums & Bev Nicholson
XU 52	111005/520	Andrew Lums

Gridlines D100-90, units 17-49 & 51 were also excavated in 2008

1.2.5.1\_C08\_summary.pdf

Read PDF

Download PDF



## Crepeelee site 2008 - Bev Nicholson field journal

<http://archives.brandonu.ca/en/permalink/descriptions11809>

Part Of: RG 7 Beverley Nicholson fonds

Description Level: sub sub sub series

Series Number: 1.2.5.2

File Number: 1

Accession Number: 1-2010

GMD: multiple media

Date Range: 2008

Physical Description: 6 pages

Material Details: Field journals have been scanned in multi-page PDF files.

History /

Biographical:

The Crepeele site was identified from the results of the Casselman survey and excavated in 2003, 2004, 2005 and 2007.

In 2008 a small crew under the direction of Bev Nicholson returned to the site to gather further samples and verify profiles. Three units (XU 50, 51 and 52) were excavated. As well the Graham site 2008 was also excavated.

The field journals contain information about both the Crepeele and Graham sites 2008.

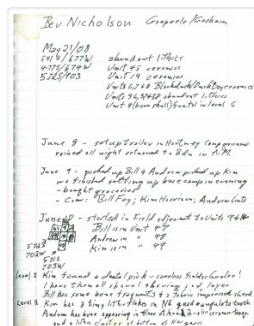
Scope and Content:

Record of daily observations at the site including: excavation methods, items recovered, features, local environment and weather.

Name Access: Crepeele site 2008 - Bev Nicholson field journal

Subject Access: Archaeology  
Crepeele locale  
Crepeele site DiMe-29  
Crepeele site 2008

## Documents



1.2.5.2.1\_C08\_BNichol  
son.pdf

 Read PDF

 Download PDF

## Crepeele site 2008 - Bill Foy field journal

<http://archives.brandonu.ca/en/permalink/descriptions11812>

Part Of: RG 7 Beverley Nicholson fonds

Description Level: sub sub sub series

Series Number: 1.2.5.2



File Number: 4  
Accession Number: 1-2010  
GMD: multiple media  
Date Range: 2008  
Physical Description: 20 pages  
Material Details: Field journals have been scanned in multi-page PDF files.  
History /  
Biographical:

The Crepeelee site was identified from the results of the Casselman survey and excavated in 2003, 2004, 2005 and 2007.

In 2008 a small crew under the direction of Bev Nicholson returned to the site to gather further samples and verify profiles. Three units (XU 50, 51 and 52) were excavated. As well the Graham site 2008 was also excavated.

The field journals contain information about both the Crepeelee and Graham sites 2008.

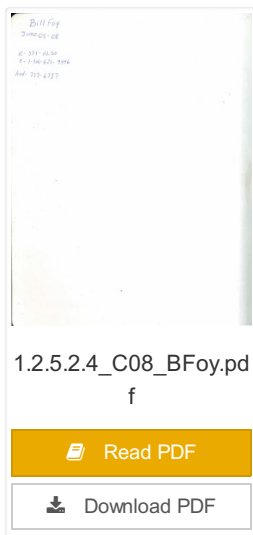
#### Scope and Content:

Record of daily observations at the site including: excavation methods, items recovered, features, local environment and weather.

Name Access: Crepeelee site 2008 - Bill Foy field journal  
Subject Access: Archaeology  
Crepeelee locale  
Crepeelee site DiMe-29  
Crepeelee site 2008

## Documents

---



1.2.5.2.4\_C08\_BFoy.pdf

 Read PDF

 Download PDF

Crepeelee site 2008 - Andrew Lints field journal

<http://archives.brandonu.ca/en/permalink/descriptions11963>



Part Of: RG 7 Beverley Nicholson fonds

Description Level: sub sub sub series

Series Number: 1.2.5.2

File Number: 2

Accession Number: 1-2010

GMD: multiple media

Date Range: 2008

Physical Description: 13 pages

Material Details: Field journals have been scanned in multi-page PDF files.

History /  
Biographical:

The Crepeelee site was identified from the results of the Casselman survey and excavated in 2003, 2004, 2005 and 2007.

In 2008 a small crew under the direction of Bev Nicholson returned to the site to gather further samples and verify profiles. Three units (XU 50, 51 and 52) were excavated. As well the Graham site 2008 was also excavated.

The field journals contain information about both the Crepeelee and Graham sites 2008.

#### Scope and Content:

Record of daily observations at the site including: excavation methods, items recovered, features, local environment and weather.

Name Access: Crepeelee site 2008 - Andrew Lints field journal

Subject Access: Archaeology  
Crepeelee locale  
Crepeelee site DiMe-29  
Crepeelee site 2008

## Documents

---



1.2.5.2.2\_C08\_ALints.pdf

 Read PDF

 Download PDF



## Graham site 2008 - photographs

<http://archives.brandonu.ca/en/permalink/descriptions11958>

Part Of: RG 7 Beverley Nicholson fonds

Description Level: sub sub sub series

Series Number: 1.4.4.5

Accession Number: 1-2010

GMD: graphic

Date Range: 2008

Physical Description: 8 photographs

Material Details: JPEGs

History /

Biographical:

Numerous photographs were taken during the excavation of the Graham site 2008. A selection of photographs of features and personnel performing usual field tasks such as surveying, measuring, excavating, and taking photographs were selected for the archive.

Scope and Content:

Sub sub sub series consists of photographs taken during excavation of the Graham site 2008.

Name Access: Graham site 2008 - photographs

Subject Access: Archaeology  
Crepeele locale  
Graham site DiMe-30  
Graham site 2008 - photographs



## Crepeelee site 2007 - photographs

<http://archives.brandonu.ca/en/permalink/descriptions11779>

Part Of: RG 7 Beverley Nicholson fonds

Description Level: sub sub sub series

Series Number: 1.2.4.5

Accession Number: 1-2010

GMD: graphic

Date Range: 2007

Physical Description: 9 photographs

Material Details: JPEGs

History /

Biographical:

Numerous photographs were taken during the excavation of the Crepeelee site 2007. A selection of photographs of features and personnel performing usual field tasks such as surveying, measuring, excavating, and taking photographs were selected for the archive.

Scope and Content:

Sub sub sub series consists of photographs taken during excavation of the Crepeelee site 2007.

Name Access: Crepeelee site 2007 - photographs

Subject Access: Archaeology  
Crepeelee locale  
Crepeelee site DiMe-29  
Crepeelee site 2007





## Crepeelee site 2004 - photographs

<http://archives.brandonu.ca/en/permalink/descriptions11730>

Part Of: RG 7 Beverley Nicholson fonds

Description Level: sub sub sub series

Series Number: 1.2.2.5

Accession Number: 1-2010

GMD: graphic

Date Range: 2004

Physical Description: 6 photographs

Material Details: JPEGs

History /

Biographical:

Numerous photographs were taken during the excavation of the Crepeelee site 2004. A selection of photographs of features and personnel performing usual field tasks such as surveying, measuring, excavating, and taking photographs were selected for the archive.

Scope and Content:

Sub sub sub series consists of photographs taken during excavation of the Crepeelee site 2004.

Name Access: Crepeelee site 2004 - photographs

Subject Access: Archaeology  
Crepeelee locale  
Crepeelee site DiMe-29  
Crepeelee site 2004



## Crepeelee site 2005 - photographs

<http://archives.brandonu.ca/en/permalink/descriptions11762>

Part Of: RG 7 Beverley Nicholson fonds

Description Level: sub sub sub series

Series Number: 1.2.3.5

Accession Number: 1-2010

GMD: graphic

Date Range: 2005

Physical Description: 7 photographs

Material Details: JPEGs

History /

Biographical:

Numerous photographs were taken during the excavation of the Crepeelee site 2005. A selection of photographs of features and personnel performing usual field tasks such as surveying, measuring, excavating, and taking photographs were selected for the archive.

Scope and Content:

Sub sub sub series consists of photographs taken during excavation of the Crepeelee site 2005.

Name Access: Crepeelee site 2005 - photographs

Subject Access: Archaeology  
Crepeelee locale  
Crepeelee site DiMe-29  
Crepeelee site 2005



## Crepeelee site 2003 - photographs

<http://archives.brandonu.ca/en/permalink/descriptions11714>

Part Of: RG 7 Beverley Nicholson fonds

Description Level: sub sub sub series

Series Number: 1.2.1.5

Accession Number: 1-2010

GMD: graphic

Date Range: 2003

Physical Description: 5 photographs

Material Details: JPEGs

History /

Biographical:

Numerous photographs were taken during the excavation of the Crepeelee site 2003. A selection of photographs of personnel performing usual field tasks such as surveying, measuring, excavating, and taking photographs were selected for the archive.

Scope and Content:

Sub sub sub series consists of photographs taken during excavation of the Crepeelee site 2003.

Name Access: Crepeelee site 2003 - photographs

Subject Access: Archaeology  
Crepeelee locale  
Crepeelee site DiMe-29  
Crepeelee site 2003



## Crepeelee site 2004 - site records

<http://archives.brandonu.ca/en/permalink/descriptions11728>

Part Of: RG 7 Beverley Nicholson fonds  
Description Level: sub sub sub series  
Series Number: 1.2.2.3  
Accession Number: 1-2010  
GMD: multiple media  
Date Range: 2004  
Material Details: Site records have been scanned in multi-page PDF files.

### History /

#### Biographical:

The Crepeelee site was identified from the results of the Casselman survey and excavated in 2003. In 2004 the site was funded through the SCAPE project, directed by Bev Nicholson. The units were excavated by Crew Chief Tomasin Playford and crew.

Eight units were excavated in 2004, XU 1 to XU 8. Each unit has a separate pdf file.

#### Scope and Content:

Site records of excavation units may include: level summaries, floor plans, feature sheets, wall profiles, unit summaries and any other additional information relating to the unit.

Name Access: Crepeelee site 2004 - site records  
Subject Access: Archaeology  
Crepeelee locale  
Crepeelee site DiMe-29  
Crepeelee site 2004



## Crepeelee site 2005 - site records

<http://archives.brandonu.ca/en/permalink/descriptions11752>

Part Of: RG 7 Beverley Nicholson fonds  
Description Level: sub sub sub series  
Series Number: 1.2.3.3  
Accession Number: 1-2010  
GMD: multiple media  
Date Range: 2005  
Material Details: Site records have been scanned in multi-page PDF files.

### History /

#### Biographical:

In 2005 the Brandon University Field School was held at both the Crepeelee and Graham sites in the Crepeelee locale.

Denise Ens instructed the school and James Graham was teaching assistant.

At the Crepeelee site nine units were excavated (XU10-16 & 20, 21). Units 20 & 21 were referred to as Meadow in the notes but are considered part of the larger site based on recoveries

#### Scope and Content:

Site records of excavation units may include: level summaries, floor plans, feature sheets, wall profiles, unit summaries and any other additional information relating to the unit.

Name Access: Crepeelee site 2005 - site records  
Subject Access: Archaeology  
Crepeelee locale  
Crepeelee site DiMe-29  
Crepeelee site 2005



## Crepeelee site 2003 - site records

<http://archives.brandonu.ca/en/permalink/descriptions11715>

Part Of: RG 7 Beverley Nicholson fonds

Description Level: sub sub sub series

Series Number: 1.2.1.3

Accession Number: 1-2010

GMD: multiple media

Date Range: 2003

Material Details: Site records have been scanned in multi-page PDF files.

History /

Biographical:

The Crepeelee site was excavated in 2003 as Crepeelee 3. Standard archaeological methods were used to excavate the units. Site records of excavation units XU 110 – 113 are in separate pdf files.

Scope and Content:

Site records of excavation units may include: level summaries, floor plans, feature sheets, wall profiles, unit summaries and any other additional information relating to the unit.

Name Access: Crepeelee site 2003 - site records

Subject Access: Archaeology  
Crepeelee locale  
Crepeelee site DiMe-29  
Crepeelee site 2003



## Crepeele site 2007 - summary information

<http://archives.brandonu.ca/en/permalink/descriptions11813>

Part Of: RG 7 Beverley Nicholson fonds

Description Level: sub sub sub series

Series Number: 1.2.4.1

Accession Number: 1-2010

GMD: multiple media

Date Range: 2007

Material Details: Field journals have been scanned in multi-page PDF files. Artifact catalogues are PDF files in spreadsheet format. Photographs are in jpeg format.

### History /

#### Biographical:

In 2007 the Brandon University Field School was held at both the Crepeele site in the Crepeele locale. Denise Ens instructed the school with Jessica McKenzie and Kate Decter as teaching assistants.

Seventeen units were excavated (XU3 - 46). Faunal (animal bone), lithics, fire cracked rock, diagnostic lithics and ceramics were recovered from the site.

#### Scope and Content:


Sub-sub-sub series contains: Summary information of field methodology, number and co-ordinates of excavations, personnel and their staff position.


Name Access: Crepeele site 2007 - summary information

Subject Access: Archaeology  
Crepeele locale  
Crepeele site DiMe-29  
Crepeele site 2007

## Documents

1.2.4.1\_C07\_summary.pdf

 Read PDF

 Download PDF



## Crepeelee site 2004 - summary information

<http://archives.brandonu.ca/en/permalink/descriptions11726>

Part Of: RG 7 Beverley Nicholson fonds

Description Level: sub sub sub series

Series Number: 1.2.2.1

Accession Number: 1-2010

GMD: multiple media

Date Range: 2004

Material Details: Field journals have been scanned in multi-page PDF files. Artifact catalogues are PDF files in spreadsheet format. Photographs are in jpeg format.

History /

Biographical:

The Crepeelee site was identified from the results of the Casselman survey and excavated in 2003. Further units 1 to 8 were excavated in 2004. Funding was through the SCAPE project, directed by Dr. Bev Nicholson. The site was excavated by Crew Chief Tomasin Playford and crew.

Scope and Content:

Sub-sub-sub series contains: Summary information of field methodology, number and co-ordinates of excavations, personnel and their staff position.

Name Access: Crepeelee site 2004 - summary information

Subject Access: Archaeology  
Crepeelee locale  
Crepeelee site DiMe-29  
Crepeelee site 2004

## Documents

ARCH 1.1 Crepeele Locale  
1.2 Crepeele Site DiMe-29  
1.2.2 Crepeele 2004  
1.2.2.1 Summary Information

Crew Chief: Tomasin Playford with Crew of: Andrea Richards, Sarah Gordon, Sherry Lefebvre, Eric Cross

Excavation Unit	Coordinates	Excavator
Unit 1	4550N 315W	Andrea Richards
Unit 2	4550N 315W	Sarah Gordon
Unit 3	4550N 315W	Tomasin Playford
Unit 4	4550N 315W	Sherry Lefebvre
Unit 5	4550N 315W	Andrea Richards
Unit 6	4550N 315W	Eric Cross
Unit 7	4550N 315W	Tomasin Playford
Unit 8	4550N 315W	Sherry Lefebvre
Unit 9	4750N 315W	Tomasin Playford
Unit 10	4750N 315W	Sherry Lefebvre

After excavation the units 1 and 2 were consolidated together from the Crepeele site and were re-excavated by Gordon in 2004. The Crepeele site was re-excavated by Gordon in 2004. The Crepeele site was re-excavated by Gordon in 2004. The Crepeele site was re-excavated by Gordon in 2004.

1.2.2.1\_C04\_Summary.pdf

Read PDF

Download PDF





## Crepeelee site 2005 - field journals

<http://archives.brandonu.ca/en/permalink/descriptions11727>

Part Of: RG 7 Beverley Nicholson fonds

Description Level: sub sub sub series

Series Number: 1.2.3.2

Accession Number: 1-2010

GMD: multiple media

Date Range: 2005

Material Details: Field journals have been scanned in multi-page PDF files.

History /  
Biographical:

In 2005 the Brandon University Field School was held at both the Crepeelee and Graham sites in the Crepeelee locale.

At the Crepeelee site nine units were excavated (XU10-16 & 20, 21). Units 20 & 21 were referred to as Meadow in the notes but are considered part of the larger site based on recoveries.

Denise Ens instructed the school and James Graham was teaching assistant. Field journals were kept by both instructors.

### Scope and Content:

Record of daily observations at the site including: excavation methods, items recovered, features, local environment and weather.

Name Access: Crepeelee site 2005 - field journals

Subject Access: Archaeology  
Crepeelee locale  
Crepeelee site DiMe-29  
Crepeelee site 2005



## Crepeelee site 2005 - summary information

<http://archives.brandonu.ca/en/permalink/descriptions11749>

Part Of: RG 7 Beverley Nicholson fonds

Description Level: sub sub sub series

Series Number: 1.2.3.1

Accession Number: 1-2010

GMD: multiple media

Date Range: 2005

Material Details: Field journals have been scanned in multi-page PDF files. Artifact catalogues are PDF files in spreadsheet format. Photographs are in jpeg format.

History /

Biographical:

In 2005 the Brandon University Field School was held at both the Crepeele and Graham sites in the Crepeele locale. Denise Ens instructed the school and James Graham was teaching assistant.

Nine units were excavated (XU10-16 & 20, 21). Units 20 & 21 were referred to as Meadow in the notes but are considered part of the larger site based on recoveries

Faunal (animal bone), lithics, fire cracked rock, diagnostic lithics and ceramics were recovered from the site.

Scope and Content:

Sub-sub-sub series contains: Summary information of field methodology, number and co-ordinates of excavations, personnel and their staff position.

- Name Access:
- Crepeele site 2005 - summary information
- Subject Access:
- Archaeology
- Crepeele locale
- Crepeele site DiMe-29
- Crepeele site 2005

Documents

ABC 10.1.1 Crepeele Locale  
1.2.1 Crepeele Site DiMe-29  
1.2.2 Crepeele 2005  
1.2.3.1 Summary Information

In 2005 the Brandon University Field School was held at both the Crepeele and Graham sites in the Crepeele locale.  
At the Crepeele site nine units were excavated. Denise Ens instructed the school and James Graham was teaching assistant.  
XU 10-16 and XU 20 & 21 were excavated.  

Excavation Unit	Coordinates	Excavator
XU 10	517045N	Denise Ens
XU 11	517045N	Denise Ens
XU 12	517045N	Denise Ens
XU 13	517045N	Denise Ens
XU 14	517045N	Denise Ens
XU 15	517045N	Denise Ens
XU 16	517045N	Denise Ens
XU 20	517045N	Denise Ens
XU 21	517045N	Denise Ens

  
XU 20 & 21 was referred to as Meadow in the notes but is considered part of the larger site based on recoveries.

1.2.3.1\_C05\_summary.pdf

Read PDF

Download PDF



## Crepeelee site 2007 - field journals

<http://archives.brandonu.ca/en/permalink/descriptions11774>

Part Of: RG 7 Beverley Nicholson fonds  
Description Level: sub sub sub series  
Series Number: 1.2.4.2  
Accession Number: 1-2010  
GMD: multiple media  
Date Range: 2007  
Material Details: Field journals have been scanned in multi-page PDF files.

### History /

#### Biographical:

In 2007 the Brandon University Archaeology Field School was held at the Crepeelee site in the Crepeelee locale. Denise Ens instructed the school with Kate Decter & Jessica MacKenzie assistants.

Seventeen units were excavated XU30 - 46. Faunal (animal bone), lithics, fire cracked rock, diagnostic lithics and ceramics were recovered from the site. There are over 3050 records in the catalogue.

#### Scope and Content:

Record of daily observations at the site including: excavation methods, items recovered, features, local environment and weather.

Name Access: Crepeelee site 2007 - field journals  
Subject Access: Archaeology  
Crepeelee locale  
Crepeelee site DiMe-29  
Crepeelee site 2007



## Crepeelee site 2003 - field journals

<http://archives.brandonu.ca/en/permalink/descriptions10217>

Part Of: RG 7 Beverley Nicholson fonds  
Description Level: sub sub sub series  
Series Number: 1.2.1.2  
Accession Number: 1-2010  
GMD: multiple media  
Date Range: 2003  
Material Details: Field journals have been scanned in multi-page PDF files.

### History /

#### Biographical:

The Crepeelee site was excavated in 2003 as Crepeelee 3. Standard archaeological methods were used to excavate the units. Excavation units were initially numbered as units 10, 11, 12 & 13. These numbers have been changed on the catalogue to XU 110 – 113, due to duplication in 2005. Corresponding documents have been changed to reflect the amended excavation unit numbers, however the field journals may contain the initial numbers.

#### Scope and Content:

Record of daily observations at the site including: excavation methods, items recovered, features, local environment and weather.

Name Access: Crepeelee site 2003 - field journals  
Subject Access: Archaeology  
Crepeelee locale  
Crepeelee site DiMe-29  
Crepeelee site 2003