

# S. J. McKee Archives



## Crepeelee site 2005 - field journals

<http://archives.brandonu.ca/en/permalink/descriptions11727>

Part Of: RG 7 Beverley Nicholson fonds  
 Description Level: sub sub sub series  
 Series Number: 1.2.3.2  
 Accession Number: 1-2010  
 GMD: multiple media  
 Date Range: 2005  
 Material Details: Field journals have been scanned in multi-page PDF files.

History /

Biographical:

In 2005 the Brandon University Field School was held at both the Crepeelee and Graham sites in the Crepeelee locale.

At the Crepeelee site nine units were excavated (XU10-16 & 20, 21). Units 20 & 21 were referred to as Meadow in the notes but are considered part of the larger site based on recoveries.

Denise Ens instructed the school and James Graham was teaching assistant. Field journals were kept by both instructors.

Scope and Content:

Record of daily observations at the site including: excavation methods, items recovered, features, local environment and weather.

Name Access: Crepeelee site 2005 - field journals

Subject Access: Archaeology  
 Crepeelee locale  
 Crepeelee site DiMe-29  
 Crepeelee site 2005



## Crepeelee site 2005 - summary information

<http://archives.brandonu.ca/en/permalink/descriptions11749>

Part Of: RG 7 Beverley Nicholson fonds  
 Description Level: sub sub sub series  
 Series Number: 1.2.3.1  
 Accession Number: 1-2010  
 GMD: multiple media  
 Date Range: 2005

Material Details: Field journals have been scanned in multi-page PDF files. Artifact catalogues are PDF files in spreadsheet format. Photographs are in jpeg format.

History /  
Biographical:

In 2005 the Brandon University Field School was held at both the Crepeelee and Graham sites in the Crepeelee locale. Denise Ens instructed the school and James Graham was teaching assistant.  
Nine units were excavated (XU10-16 & 20, 21). Units 20 & 21 were referred to as Meadow in the notes but are considered part of the larger site based on recoveries

Faunal (animal bone), lithics, fire cracked rock, diagnostic lithics and ceramics were recovered from the site.

Scope and Content:  
Sub-sub-sub series contains: Summary information of field methodology, number and co-ordinates of excavations, personnel and their staff position.

Name Access: Crepeelee site 2005 - summary information  
Subject Access: Archaeology  
Crepeelee locale  
Crepeelee site DiMe-29  
Crepeelee site 2005


Documents


ABC M & L Crepeelee Locals  
1.2.3 Crepeelee Site DiMe-29  
1.2.3.1 Crepeelee 2005  
1.2.3.1 Summary Information  
In 2005 the Brandon University Field School was held at both the Crepeelee and Graham sites in the Crepeelee locale.  
At the Crepeelee site nine units were excavated. Denise Ens instructed the school and James Graham was teaching assistant.  
XU 10 - 16 and XU 20 & 21 (Meadow).

Excavation Unit	Coordinates	Excavator
XU 10	537965 N 10	Lauren Miller
XU 11	537965 N 10	Emily Smith
XU 12	537965 N 10	Denise Ens
XU 13	537965 N 10	James Graham
XU 14	537965 N 10	Chris Thompson
XU 15	537965 N 10	Emily Smith
XU 16	537965 N 10	Lauren Miller
XU 20	542581 N 10	James Graham, Michael O'Connell, & Lauren Thompson
XU 21	542581 N 10	

XU 20 & 21 was referred to as Meadow in the notes but is considered part of the larger site based on recoveries.

1.2.3.1\_C05\_summary.pdf

 Read PDF

 Download PDF



## Crepeelee site 2003 - site records

<http://archives.brandonu.ca/en/permalink/descriptions11715>

Part Of: RG 7 Beverley Nicholson fonds

Description Level: sub sub sub series

Series Number: 1.2.1.3

Accession Number: 1-2010

GMD: multiple media

Date Range: 2003

Material Details: Site records have been scanned in multi-page PDF files.

History /

Biographical:

The Crepeelee site was excavated in 2003 as Crepeelee 3. Standard archaeological methods were used to excavate the units. Site records of excavation units XU 110 – 113 are in separate pdf files.

Scope and Content:

Site records of excavation units may include: level summaries, floor plans, feature sheets, wall profiles, unit summaries and any other additional information relating to the unit.

Name Access: Crepeelee site 2003 - site records

Subject Access: Archaeology  
Crepeelee locale  
Crepeelee site DiMe-29  
Crepeelee site 2003



## Crepeelee site 2004 - site records

<http://archives.brandonu.ca/en/permalink/descriptions11728>

Part Of: RG 7 Beverley Nicholson fonds  
Description Level: sub sub sub series  
Series Number: 1.2.2.3  
Accession Number: 1-2010  
GMD: multiple media  
Date Range: 2004  
Material Details: Site records have been scanned in multi-page PDF files.

### History /

#### Biographical:

The Crepeelee site was identified from the results of the Casselman survey and excavated in 2003. In 2004 the site was funded through the SCAPE project, directed by Bev Nicholson. The units were excavated by Crew Chief Tomasin Playford and crew.

Eight units were excavated in 2004, XU 1 to XU 8. Each unit has a separate pdf file.

#### Scope and Content:

Site records of excavation units may include: level summaries, floor plans, feature sheets, wall profiles, unit summaries and any other additional information relating to the unit.

Name Access: Crepeelee site 2004 - site records  
Subject Access: Archaeology  
Crepeelee locale  
Crepeelee site DiMe-29  
Crepeelee site 2004



# Crepeele site 2004 - summary information

<http://archives.brandonu.ca/en/permalink/descriptions11726>

Part Of: RG 7 Beverley Nicholson fonds

Description Level: sub sub sub series

Series Number: 1.2.2.1

Accession Number: 1-2010

GMD: multiple media

Date Range: 2004

Material Details: Field journals have been scanned in multi-page PDF files. Artifact catalogues are PDF files in spreadsheet format. Photographs are in jpeg format.

History /

Biographical:

The Crepeele site was identified from the results of the Casselman survey and excavated in 2003. Further units 1 to 8 were excavated in 2004. Funding was through the SCAPE project, directed by Dr. Bev Nicholson. The site was excavated by Crew Chief Tomasin Playford and crew.

Scope and Content:

Sub-sub-sub series contains: Summary information of field methodology, number and co-ordinates of excavations, personnel and their staff position.

Name Access: Crepeele site 2004 - summary information

Subject Access: Archaeology  
Crepeele locale  
Crepeele site DiMe-29  
Crepeele site 2004

## Documents

ARCH 1.1 Crepeele Locale  
1.2 Crepeele Site DiMe-29  
1.2.2 Crepeele 2004  
1.2.2.1 Summary Information

Crew Chief: Tomasin Playford with Crew of: Andrea Richards, Sarah Gordon, Sherry Lefebvre, Eric Cross

Excavation Unit	Coordinates	Excavator
Unit 1	4504N 73W	Andrea Richards
Unit 2	4504N 73W	Sarah Gordon
Unit 3	4504N 73W	Tomasin Playford
Unit 4	4504N 73W	Sherry Lefebvre
Unit 5	4504N 73W	Andrea Richards
Unit 6	4504N 73W	Eric Cross
Unit 7	4504N 73W	Tomasin Playford
Unit 8	4504N 73W	Sherry Lefebvre
Unit 9	4504N 73W	Tomasin Playford
Unit 10	4504N 73W	Sherry Lefebvre

After excavation the units 1 and 2 were consolidated together from the Crepeele site and were re-named the Gordon site (DiMe-29). The units 3-10 were re-named the Lefebvre site (DiMe-30).

1.2.2.1\_C04\_Summary.pdf

Read PDF

Download PDF



## Crepeelee site 2008 - summary information

<http://archives.brandonu.ca/en/permalink/descriptions11773>

Part Of:	RG 7 Beverley Nicholson fonds
Description Level:	sub sub sub series
Series Number:	1.2.5.1
Accession Number:	1-2010
GMD:	multiple media
Date Range:	2008
Material Details:	Field journals have been scanned in multi-page PDF files. Artifact catalogues are PDF files in spreadsheet format. Photographs are in jpeg format.

### History /

#### Biographical:

The Crepeelee site was identified from the results of the Casselman survey and excavated in 2003, 2004, 2005 and 2007.

In 2005 and 2007 the Brandon University Archaeology Field School was held at the Crepeelee site in the Crepeelee locale.

In 2008 a small crew returned to the site to gather further samples and verify profiles. Three units (XU 50, 51 and 52) were excavated with faunal (animal bone), lithics, fire cracked rock, diagnostic lithics and ceramics recovered from the site. There are 455 records in the artifact catalogue.

#### Scope and Content:

Sub-sub-sub series contains: Summary information of field methodology, number and co-ordinates of excavations, personnel and their staff position.

Name Access:	Crepeelee site 2008 - summary information
Subject Access:	Archaeology Crepeelee locale Crepeelee site DiMe-29 Crepeelee site 2008

## Documents

ABR 10.1.1 Crepeelee Locale  
1.2.5 Crepeelee Site DiMe-29  
1.2.5.1 Crepeelee 2008  
1.2.5.1.1 Summary Information

Excavation Unit: Crepeelee Coordinates: Excavator:  
XU 50: 111000 N 5000 E: Kim Harrison & Bill Fay  
XU 51: 111000 N 5000 E: Andrew Lums & Ben Nicholson  
XU 52: 111000 N 5000 E: Andrew Lums

Graben DiMe-29, units 17-19 & 51 were also excavated in 2008

1.2.5.1\_C08\_summary.pdf

 Read PDF

 Download PDF



## Crepeelee site 2007 - field journals

<http://archives.brandonu.ca/en/permalink/descriptions11774>

Part Of: RG 7 Beverley Nicholson fonds

Description Level: sub sub sub series

Series Number: 1.2.4.2

Accession Number: 1-2010

GMD: multiple media

Date Range: 2007

Material Details: Field journals have been scanned in multi-page PDF files.

History /

Biographical:

In 2007 the Brandon University Archaeology Field School was held at the Crepeelee site in the Crepeelee locale. Denise Ens instructed the school with Kate Decter & Jessica MacKenzie assistants.

Seventeen units were excavated XU30 - 46. Faunal (animal bone), lithics, fire cracked rock, diagnostic lithics and ceramics were recovered from the site. There are over 3050 records in the catalogue.

Scope and Content:

Record of daily observations at the site including: excavation methods, items recovered, features, local environment and weather.

Name Access: Crepeelee site 2007 - field journals

Subject Access: Archaeology  
Crepeelee locale  
Crepeelee site DiMe-29  
Crepeelee site 2007



## Crepeelee site 2008 - field journals

<http://archives.brandonu.ca/en/permalink/descriptions11808>

Part Of: RG 7 Beverley Nicholson fonds  
Description Level: sub sub sub series  
Series Number: 1.2.5.2  
Accession Number: 1-2010  
GMD: multiple media  
Date Range: 2007  
Material Details: Field journals have been scanned in multi-page PDF files.

### History /

#### Biographical:

The Crepeelee site was identified from the results of the Casselman survey and excavated in 2003, 2004, 2005 and 2007.

In 2008 a small crew under the direction of Bev Nicholson returned to the site to gather further samples and verify profiles. Three units (XU 50, 51 and 52) were excavated. As well the Graham site 2008 was also excavated.

The field journals contain information about both the Crepeelee and Graham sites.

#### Scope and Content:

Record of daily observations at the site including: excavation methods, items recovered, features, local environment and weather.

Name Access: Crepeelee site 2008 - field journals  
Subject Access: Archaeology  
Crepeelee locale  
Crepeelee site DiMe-29  
Crepeelee site 2008





## Crepeele site 2007 - summary information

<http://archives.brandonu.ca/en/permalink/descriptions11813>

Part Of: RG 7 Beverley Nicholson fonds

Description Level: sub sub sub series

Series Number: 1.2.4.1

Accession Number: 1-2010

GMD: multiple media

Date Range: 2007

Material Details: Field journals have been scanned in multi-page PDF files. Artifact catalogues are PDF files in spreadsheet format. Photographs are in jpeg format.

### History /

#### Biographical:

In 2007 the Brandon University Field School was held at both the Crepeele site in the Crepeele locale. Denise Ens instructed the school with Jessica McKenzie and Kate Decter as teaching assistants.

Seventeen units were excavated (XU3 - 46). Faunal (animal bone), lithics, fire cracked rock, diagnostic lithics and ceramics were recovered from the site.

#### Scope and Content:


Sub-sub-sub series contains: Summary information of field methodology, number and co-ordinates of excavations, personnel and their staff position.


Name Access: Crepeele site 2007 - summary information

Subject Access: Archaeology  
Crepeele locale  
Crepeele site DiMe-29  
Crepeele site 2007

## Documents

1.2.4.1\_C07\_summary.  
pdf

 Read PDF

 Download PDF



## Crepeelee site 2003 - field journals

<http://archives.brandonu.ca/en/permalink/descriptions10217>

Part Of: RG 7 Beverley Nicholson fonds  
Description Level: sub sub sub series  
Series Number: 1.2.1.2  
Accession Number: 1-2010  
GMD: multiple media  
Date Range: 2003  
Material Details: Field journals have been scanned in multi-page PDF files.  
History /  
Biographical:

The Crepeelee site was excavated in 2003 as Crepeelee 3. Standard archaeological methods were used to excavate the units. Excavation units were initially numbered as units 10, 11, 12 & 13. These numbers have been changed on the catalogue to XU 110 – 113, due to duplication in 2005. Corresponding documents have been changed to reflect the amended excavation unit numbers, however the field journals may contain the initial numbers.

### Scope and Content:

Record of daily observations at the site including: excavation methods, items recovered, features, local environment and weather.

Name Access: Crepeelee site 2003 - field journals  
Subject Access: Archaeology  
Crepeelee locale  
Crepeelee site DiMe-29  
Crepeelee site 2003



## Crepeelee site 2008 - Andrew Lints field journal

<http://archives.brandonu.ca/en/permalink/descriptions11963>

Part Of: RG 7 Beverley Nicholson fonds  
Description Level: sub sub sub series  
Series Number: 1.2.5.2  
File Number: 2  
Accession Number: 1-2010  
GMD: multiple media  
Date Range: 2008  
Physical Description: 13 pages  
Material Details: Field journals have been scanned in multi-page PDF files.

## History /

### Biographical:

The Crepee site was identified from the results of the Casselman survey and excavated in 2003, 2004, 2005 and 2007.

In 2008 a small crew under the direction of Bev Nicholson returned to the site to gather further samples and verify profiles. Three units (XU 50, 51 and 52) were excavated. As well the Graham site 2008 was also excavated.

The field journals contain information about both the Crepee and Graham sites 2008.

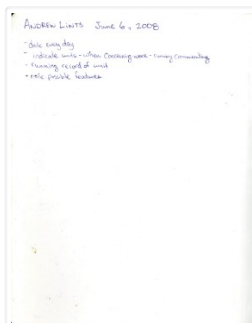
### Scope and Content:

Record of daily observations at the site including: excavation methods, items recovered, features, local environment and weather.

Name Access: Crepee site 2008 - Andrew Lints field journal

Subject Access: Archaeology  
Crepee locale  
Crepee site DiMe-29  
Crepee site 2008

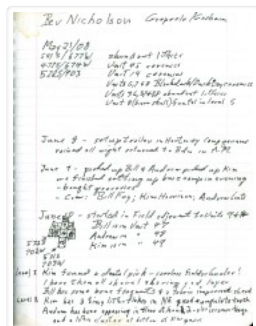
## Documents



1.2.5.2.2\_C08\_ALints.pdf

 Read PDF

 Download PDF



## Crepee site 2008 - Bev Nicholson field journal

<http://archives.brandonu.ca/en/permalink/descriptions11809>

Part Of: RG 7 Beverley Nicholson fonds

Description Level: sub sub sub series

Series Number: 1.2.5.2

File Number: 1

Accession Number: 1-2010

GMD: multiple media

Date Range: 2008

Physical Description: 6 pages

Material Details: Field journals have been scanned in multi-page PDF files.

History /

Biographical:

The Crepeele site was identified from the results of the Casselman survey and excavated in 2003, 2004, 2005 and 2007.

In 2008 a small crew under the direction of Bev Nicholson returned to the site to gather further samples and verify profiles. Three units (XU 50, 51 and 52) were excavated. As well the Graham site 2008 was also excavated.

The field journals contain information about both the Crepeele and Graham sites 2008.

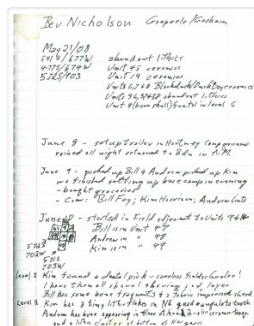
Scope and Content:

Record of daily observations at the site including: excavation methods, items recovered, features, local environment and weather.

Name Access: Crepeele site 2008 - Bev Nicholson field journal

Subject Access: Archaeology  
Crepeele locale  
Crepeele site DiMe-29  
Crepeele site 2008

## Documents



1.2.5.2.1\_C08\_BNichol  
son.pdf

 Read PDF

 Download PDF

## Crepeele site 2008 - Bill Foy field journal

<http://archives.brandonu.ca/en/permalink/descriptions11812>

Part Of: RG 7 Beverley Nicholson fonds

Description Level: sub sub sub series

Series Number: 1.2.5.2



File Number: 4  
Accession Number: 1-2010  
GMD: multiple media  
Date Range: 2008  
Physical Description: 20 pages  
Material Details: Field journals have been scanned in multi-page PDF files.  
History /  
Biographical:

The Crepeele site was identified from the results of the Casselman survey and excavated in 2003, 2004, 2005 and 2007.

In 2008 a small crew under the direction of Bev Nicholson returned to the site to gather further samples and verify profiles. Three units (XU 50, 51 and 52) were excavated. As well the Graham site 2008 was also excavated.

The field journals contain information about both the Crepeele and Graham sites 2008.

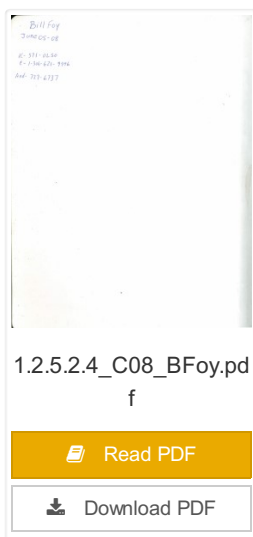
#### Scope and Content:

Record of daily observations at the site including: excavation methods, items recovered, features, local environment and weather.

Name Access: Crepeele site 2008 - Bill Foy field journal  
Subject Access: Archaeology  
Crepeele locale  
Crepeele site DiMe-29  
Crepeele site 2008

## Documents

---



1.2.5.2.4\_C08\_BFoy.pdf

 Read PDF

 Download PDF

## Crepeele site 2003 - summary information

<http://archives.brandonu.ca/en/permalink/descriptions11965>



Part Of:

RG 7 Beverley Nicholson fonds

Description Level:

sub sub sub series

Series Number:

1.2.1.1

Accession Number:

1-2010

GMD:

multiple media

Date Range:

2003

Material Details:

Field journals have been scanned in multi-page PDF files. Artifact catalogues are PDF files in spreadsheet format. Photographs are in jpeg format.

History /

Biographical:

The Crepeele site was identified from the results of the Casselman survey. The site is located within the Crepeele locale approximately 400 meters to the west of the Sarah site. The units were excavated by Crew Chief James Graham and the crew from the survey.

The Crepeele site was excavated in 2003 as Crepeele 3 with the units numbered as units 10, 11, 12 & 13. These numbers have been changed on the catalogue to XU 110 – 113, due to duplication in 2005. Corresponding documents have been changed but there may be some reference to the initial numbers in the field journals.

The artifacts recovered from these four excavations are faunal (animal bone), mainly bison, lithic materials (stone tools and flakes) and some ceramic (pottery). The artifact catalogue has over 600 records.

Scope and Content:

Sub-sub-sub series contains: Summary information of field methodology, number and co-ordinates of excavations, personnel and their staff position; Field journals are daily records of recoveries, features and activities at the site; Site records include excavation level and unit summaries, feature sheets, profiles; sample records and maps; Artifact catalogues are lists and identifications of all artifacts recovered; Photographs are of excavation units, features, the landscape and personnel.

Name Access:

Crepeele site 2003 - summary information

Subject Access:

Archaeology

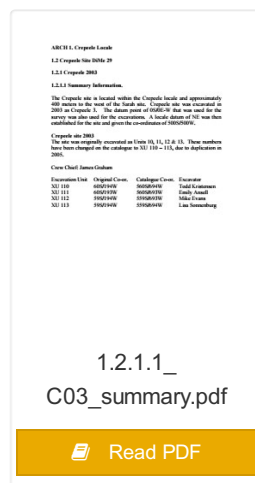
Crepeele locale

Crepeele site DiMe-29

Crepeele site 2003

Crepeele site 2003 - summary information

## Documents





## Graham site 2005 - summary information

<http://archives.brandonu.ca/en/permalink/descriptions11905>

Part Of: RG 7 Beverley Nicholson fonds

Description Level: sub sub sub series

Series Number: 1.4.2.1

Accession Number: 1-2010

GMD: multiple media

Date Range: 2005

Material Details: Field journals have been scanned in multi-page PDF files. Artifact catalogues are PDF files in spreadsheet format. Photographs are in jpeg format.

### History /

#### Biographical:

The Graham site is located south of the Crepeele site. Due to the close proximity the Graham and Crepeele sites have both been the site of the Brandon University Archaeological Field School.

In 2005 both sites were excavated as part of the Field School experience instructed by Denise Ens with teaching assistant James Graham Six units (XU 1-6) were excavated at the Graham site.

Recoveries included faunal (mostly bison), lithics (points, scrapers), and ceramics.

#### Scope and Content:

Sub-sub-sub series contains: Summary information of field methodology, number and co-ordinates of excavations, personnel and their staff position.

Name Access: Graham site 2005 - summary information

Subject Access: Archaeology  
Crepeele locale  
Graham site DiMe-30  
Graham site 2005

## Documents



 Read PDF

 Download PDF



## Graham site 2005 - field journals

<http://archives.brandonu.ca/en/permalink/descriptions11906>

Part Of: RG 7 Beverley Nicholson fonds

Description Level: sub sub sub series

Series Number: 1.4.2.2

Accession Number: 1-2010

GMD: multiple media

Date Range: 2005

Material Details: Field journals have been scanned in multi-page PDF files.

History /

Biographical:

The Graham site is located south of the Crepeelee site. Due to the close proximity the Graham and Crepeelee sites have both been the site of the Brandon University Archaeological Field School.

In 2005 both sites were excavated as part of the Field School experience instructed by Denise Ens with teaching assistant James Graham. Six units (XU 1-6) were excavated at the Graham site.

Field journals from 2005 contain notes concerning the Graham and Crepeelee sites.

Scope and Content:

Record of daily observations at the site including: excavation methods, items recovered, features, local environment and weather.

Name Access: Graham site 2005 - field journals

Subject Access: Archaeology  
Crepeelee locale  
Graham site DiMe-30  
Graham site 2005





# Sarah site 2003 - summary information

<http://archives.brandonu.ca/en/permalink/descriptions11720>

Part Of: RG 7 Beverley Nicholson fonds

Description Level: sub sub sub series

Series Number: 1.3.1.1

Accession Number: 1-2010

GMD: multiple media

Date Range: 2003

Material Details: Field journals have been scanned in multi-page PDF files. Artifact catalogues are PDF files in spreadsheet format. Photographs are in jpeg format.

## History /

### Biographical:

The Sarah site was initially chosen for excavation based on the results of the Casselman survey. The survey recovered significant amounts of faunal remains, some ceramics and lithics from the test pits. Excavations took place in 2003 at Crepeele West (Units 1-5) and Crepeele East (Units 6-9). The site was subsequently renamed the Sarah site DiMe-28.

Units 1 to 9 were excavated by supervisor James Graham and crew of Sarah Graham, Mike Evans, Todd Kristensen, Shayne Kolesar, Lisa Sonnenburg and Emily Ansell.

### Scope and Content:

Sub-sub-sub series contains: Summary information of field methodology, number and co-ordinates of excavations, personnel and their staff position.

Name Access: Sarah site 2003 - summary information

Subject Access: Archaeology  
Crepeele locale  
Sarah site DiMe-28  
Sarah site 2003

## Documents

ARCH 1.1 Crepeele Locals

1.3 Sarah DiMe-28

1.3.1 Sarah 2003

1.3.1.1 Summary Information

**Sarah site DiMe-28**

The Sarah site was originally Crepeele West (2011-1-5) and Crepeele East (2011-6-9) when excavated in 2003. The datum point of 1000-00 was used for the survey and also used for the excavations. A local datum of 100 was then established for the site and given the co-ordinates of 100000000.

**Excavation Units: 101-109**

Coordinates below are the archaeological co-ordinates from the original and the revised datum point.

Excavation Unit	Original Coordinates	Calculated Coords	Excavator
101-1	10000000	10000000	Lisa Sonnenburg
101-2	10000000	10000000	Lisa Sonnenburg
101-3	10000000	10000000	Lisa Sonnenburg
101-4	10000000	10000000	Lisa Sonnenburg
101-5	10000000	10000000	Lisa Sonnenburg
101-6	10000000	10000000	Lisa Sonnenburg
101-7	10000000	10000000	Lisa Sonnenburg
101-8	10000000	10000000	Lisa Sonnenburg
101-9	10000000	10000000	Lisa Sonnenburg

1.3.1.1\_

Sarah03\_summary.pdf

Read PDF

Download PDF



## Graham site 2004 - summary information

<http://archives.brandonu.ca/en/permalink/descriptions11888>

Part Of:	RG 7 Beverley Nicholson fonds
Description Level:	sub sub sub series
Series Number:	1.4.1.1
Accession Number:	1-2010
GMD:	multiple media
Date Range:	2004
Material Details:	Field journals have been scanned in multi-page PDF files. Artifact catalogues are PDF files in spreadsheet format. Photographs are in jpeg format.

### History /

#### Biographical:

The Graham site was initially designated as a separate site early in the testing of the Crepeele locale due to what appeared to be a distinction between Early and Late Woodland ceramics. Subsequent testing has shown that this distinction was premature and that the cultural mosaic represented in the western section of the Crepeele locale does not readily separate in this manner.

#### Scope and Content:

Sub-sub-sub series contains: Summary information of field methodology, number and co-ordinates of excavations, personnel and their staff position.

Name Access:	Graham site 2004 - summary information
Subject Access:	Archaeology Crepeele locale Graham site DiMe-30 Graham site 2004

## Documents

ARCH 1.1 Crepeele Locale  
1.4 Graham Site 2004-20  
1.4.1 Graham 2004  
1.4.1.1 Summary Information  
Core Unit: Thomas Playford, Cree Wayne Kishner and Andrew Richards  
Graham Site 1.4.1.1  
Excavation Unit: Catalogue Coordinates  
Site ID: 1400000  
Site ID: 1400000  
Excavation: Thomas Playford & Andrew Richards

The units 9 and 11 were excavated with the Crepeele site in 2004 and were re-designated to the Graham site 2004-20 keeping the same unit numbers.

1.4.1.1\_Graham04\_Summary.pdf

Read PDF

Download PDF



## Graham site 2004 - field journals

<http://archives.brandonu.ca/en/permalink/descriptions11890>

Part Of: RG 7 Beverley Nicholson fonds  
Description Level: sub sub sub series  
Series Number: 1.4.1.2  
Accession Number: 1-2010  
GMD: multiple media  
Date Range: 2004  
Material Details: Field journals have been scanned in multi-page PDF files.  
History /  
Biographical:

Graham units 9 and 14 were excavated with the Crepeele site in 2004 and were reassigned to the Graham site DiMe-30 keeping the same unit numbers.

Field journals from 2004 contain notes concerning the Graham, Sarah and Atkinson sites. The relevant page numbers are noted.

### Scope and Content:

Record of daily observations at the site including: excavation methods, items recovered, features, local environment and weather.

Name Access: Graham site 2004 - field journals  
Subject Access: Archaeology  
Crepeele locale  
Graham site DiMe-30  
Graham site 2004



## Graham site 2006 - summary information

<http://archives.brandonu.ca/en/permalink/descriptions11923>

Part Of: RG 7 Beverley Nicholson fonds  
Description Level: sub sub sub series  
Series Number: 1.4.3.1  
Accession Number: 1-2010  
GMD: multiple media  
Date Range: 2006  
Material Details: Field journals have been scanned in multi-page PDF files. Artifact catalogues are PDF files in spreadsheet format. Photographs are in jpeg format.

History /

Biographical:

The Graham site is located south of the Crepeele site. Due to the close proximity the Graham and Crepeele sites have both been the site of the Brandon University Archaeological Field School.

In 2006 a small Brandon University Archaeology Field School was conducted at the Graham site. Four excavations (XU 7, 8 15 & 16) were completed with Denise Ens Instructor and Jessica MacKenzie Teaching Assistant.

Recoveries included faunal (mostly bison), lithics and ceramics Recoveries included faunal (mostly bison), lithics (points, scrapers), and ceramics.

Scope and Content:

Sub-sub-sub series contains: Summary information of field methodology, number and co-ordinates of excavations, personnel and their staff position.

Name Access:               Graham site 2006 - summary information

Subject Access:           Archaeology  
                                  Crepeele locale  
                                  Graham site DiMe-30  
                                  Graham site 2006

## Documents

---

ABCH 1.1 Crepeele Locale  
1.4 Graham Site 2006 - 2007  
1.4.3 Graham 2006/  
1.4.3.1 Summary Information  
Brandon University Archaeology Field School: Denise Ens Instructor,  
Jessica MacKenzie Assistant  
Excavation Unit    Catalogue Coordinates    Excavator  
XU 7                11152127N                                Denise Ens  
XU 8                11152127N                                Denise Ens  
XU 15              11152127N                                Denise Ens  
XU 16              11152127N                                Denise Ens

1.4.3.1\_  
Graham06\_Summary.p  
df

 Read PDF

 Download PDF