

S. J. McKee Archives



Crepeelee site 2005 - site records

<http://archives.brandonu.ca/en/permalink/descriptions11752>

Part Of: RG 7 Beverley Nicholson fonds

Description Level: sub sub sub series

Series Number: 1.2.3.3

Accession Number: 1-2010

GMD: multiple media

Date Range: 2005

Material Details: Site records have been scanned in multi-page PDF files.

History /

Biographical:

In 2005 the Brandon University Field School was held at both the Crepeelee and Graham sites in the Crepeelee locale.

Denise Ens instructed the school and James Graham was teaching assistant.

At the Crepeelee site nine units were excavated (XU10-16 & 20, 21). Units 20 & 21 were referred to as Meadow in the notes but are considered part of the larger site based on recoveries

Scope and Content:

Site records of excavation units may include: level summaries, floor plans, feature sheets, wall profiles, unit summaries and any other additional information relating to the unit.

Name Access: Crepeelee site 2005 - site records

Subject Access: Archaeology
Crepeelee locale
Crepeelee site DiMe-29
Crepeelee site 2005



Crepeelee site 2003 - site records

<http://archives.brandonu.ca/en/permalink/descriptions11715>

Part Of: RG 7 Beverley Nicholson fonds

Description Level: sub sub sub series

Series Number: 1.2.1.3

Accession Number: 1-2010

GMD: multiple media

Date Range: 2003

Material Details: Site records have been scanned in multi-page PDF files.

History /

Biographical:

The Crepeelee site was excavated in 2003 as Crepeelee 3. Standard archaeological methods were used to excavate the units. Site records of excavation units XU 110 – 113 are in separate pdf files.

Scope and Content:

Site records of excavation units may include: level summaries, floor plans, feature sheets, wall profiles, unit summaries and any other additional information relating to the unit.

Name Access: Crepeelee site 2003 - site records

Subject Access: Archaeology
Crepeelee locale
Crepeelee site DiMe-29
Crepeelee site 2003



Crepeele site 2004 - summary information

<http://archives.brandonu.ca/en/permalink/descriptions11726>

Part Of: RG 7 Beverley Nicholson fonds

Description Level: sub sub sub series

Series Number: 1.2.2.1

Accession Number: 1-2010

GMD: multiple media

Date Range: 2004

Material Details: Field journals have been scanned in multi-page PDF files. Artifact catalogues are PDF files in spreadsheet format. Photographs are in jpeg format.

History /

Biographical:

The Crepeele site was identified from the results of the Casselman survey and excavated in 2003. Further units 1 to 8 were excavated in 2004. Funding was through the SCAPE project, directed by Dr. Bev Nicholson. The site was excavated by Crew Chief Tomasin Playford and crew.

Scope and Content:

Sub-sub-sub series contains: Summary information of field methodology, number and co-ordinates of excavations, personnel and their staff position.

Name Access: Crepeele site 2004 - summary information

Subject Access: Archaeology
Crepeele locale
Crepeele site DiMe-29
Crepeele site 2004

Documents

ARCH 1.1 Crepeele Locale
1.2 Crepeele Site DiMe-29
1.2.2 Crepeele 2004
1.2.2.1 Summary Information

Crew Chief: Tomasin Playford with Crew of: Andrea Richards, Sarah Gordon, Sherry Lefebvre, Eric Cross

Excavation Unit	Coordinates	Excavator
Unit 1	4504N 73W	Andrea Richards
Unit 2	4504N 73W	Sarah Gordon
Unit 3	4504N 73W	Tomasin Playford
Unit 4	4504N 73W	Sherry Lefebvre
Unit 5	4504N 73W	Andrea Richards
Unit 6	4504N 73W	Eric Cross
Unit 7	4504N 73W	Tomasin Playford
Unit 8	4504N 73W	Sherry Lefebvre
Unit 9	4504N 73W	Tomasin Playford
Unit 10	4504N 73W	Sherry Lefebvre

After excavation the units 1 and 10 were consolidated separately from the Crepeele site and were re-excavated by Gordon in 2004. The Crepeele site was re-excavated by Gordon in 2004. The Crepeele site was re-excavated by Gordon in 2004. The Crepeele site was re-excavated by Gordon in 2004.

1.2.2.1_C04_Summary.pdf

Read PDF

Download PDF



Crepeele site 2005 - summary information

<http://archives.brandonu.ca/en/permalink/descriptions11749>

Part Of: RG 7 Beverley Nicholson fonds

Description Level: sub sub sub series

Series Number: 1.2.3.1

Accession Number: 1-2010

GMD: multiple media

Date Range: 2005

Material Details: Field journals have been scanned in multi-page PDF files. Artifact catalogues are PDF files in spreadsheet format. Photographs are in jpeg format.

History /

Biographical:

In 2005 the Brandon University Field School was held at both the Crepeele and Graham sites in the Crepeele locale. Denise Ens instructed the school and James Graham was teaching assistant.

Nine units were excavated (XU10-16 & 20, 21). Units 20 & 21 were referred to as Meadow in the notes but are considered part of the larger site based on recoveries

Faunal (animal bone), lithics, fire cracked rock, diagnostic lithics and ceramics were recovered from the site.

Scope and Content:

Sub-sub-sub series contains: Summary information of field methodology, number and co-ordinates of excavations, personnel and their staff position.

Name Access: Crepeele site 2005 - summary information

Subject Access: Archaeology
Crepeele locale
Crepeele site DiMe-29
Crepeele site 2005

Documents

ABC 101.1 Crepeele Locale

1.2.3 Crepeele Site 2005

1.2.3.1 Summary Information

In 2005 the Brandon University Field School was held at both the Crepeele and Graham sites in the Crepeele locale. Denise Ens instructed the school and James Graham was teaching assistant.

At the Crepeele site nine units were excavated. Denise Ens instructed the school and James Graham was teaching assistant.

XU 10-16 and XU 20 & 21 (Meadow)

Excavation Unit	Coordinates	Excavator
XU 10	52°10'N 100°10'W	James Graham
XU 11	52°10'N 100°10'W	Denise Ens
XU 12	52°10'N 100°10'W	Denise Ens
XU 13	52°10'N 100°10'W	Denise Ens
XU 14	52°10'N 100°10'W	Denise Ens
XU 15	52°10'N 100°10'W	Denise Ens
XU 16	52°10'N 100°10'W	Denise Ens
XU 20	52°10'N 100°10'W	Denise Ens
XU 21	52°10'N 100°10'W	Denise Ens

XU 20 & 21 was referred to as Meadow in the notes but is considered part of the larger site based on recoveries.

1.2.3.1_C05_summary.pdf

Read PDF

Download PDF



Crepeelee site 2008 - summary information

<http://archives.brandonu.ca/en/permalink/descriptions11773>

Part Of:	RG 7 Beverley Nicholson fonds
Description Level:	sub sub sub series
Series Number:	1.2.5.1
Accession Number:	1-2010
GMD:	multiple media
Date Range:	2008
Material Details:	Field journals have been scanned in multi-page PDF files. Artifact catalogues are PDF files in spreadsheet format. Photographs are in jpeg format.

History /

Biographical:

The Crepeelee site was identified from the results of the Casselman survey and excavated in 2003, 2004, 2005 and 2007.

In 2005 and 2007 the Brandon University Archaeology Field School was held at the Crepeelee site in the Crepeelee locale.

In 2008 a small crew returned to the site to gather further samples and verify profiles. Three units (XU 50, 51 and 52) were excavated with faunal (animal bone), lithics, fire cracked rock, diagnostic lithics and ceramics recovered from the site. There are 455 records in the artifact catalogue.


Scope and Content:


Sub-sub-sub series contains: Summary information of field methodology, number and coordinates of excavations, personnel and their staff position.

Name Access:	Crepeelee site 2008 - summary information
Subject Access:	Archaeology Crepeelee locale Crepeelee site DiMe-29 Crepeelee site 2008

Documents

1.2.5.1_C08_summary.pdf

 Read PDF

 Download PDF



Crepeelee site 2007 - field journals

<http://archives.brandonu.ca/en/permalink/descriptions11774>

Part Of: RG 7 Beverley Nicholson fonds
Description Level: sub sub sub series
Series Number: 1.2.4.2
Accession Number: 1-2010
GMD: multiple media
Date Range: 2007
Material Details: Field journals have been scanned in multi-page PDF files.

History /

Biographical:

In 2007 the Brandon University Archaeology Field School was held at the Crepeelee site in the Crepeelee locale. Denise Ens instructed the school with Kate Decter & Jessica MacKenzie assistants.

Seventeen units were excavated XU30 - 46. Faunal (animal bone), lithics, fire cracked rock, diagnostic lithics and ceramics were recovered from the site. There are over 3050 records in the catalogue.

Scope and Content:

Record of daily observations at the site including: excavation methods, items recovered, features, local environment and weather.

Name Access: Crepeelee site 2007 - field journals
Subject Access: Archaeology
Crepeelee locale
Crepeelee site DiMe-29
Crepeelee site 2007



Crepeelee site 2008 - field journals

<http://archives.brandonu.ca/en/permalink/descriptions11808>

Part Of: RG 7 Beverley Nicholson fonds
Description Level: sub sub sub series
Series Number: 1.2.5.2
Accession Number: 1-2010
GMD: multiple media
Date Range: 2007
Material Details: Field journals have been scanned in multi-page PDF files.
History /
Biographical:

The Crepeelee site was identified from the results of the Casselman survey and excavated in 2003, 2004, 2005 and 2007.

In 2008 a small crew under the direction of Bev Nicholson returned to the site to gather further samples and verify profiles. Three units (XU 50, 51 and 52) were excavated. As well the Graham site 2008 was also excavated.

The field journals contain information about both the Crepeelee and Graham sites.

Scope and Content:

Record of daily observations at the site including: excavation methods, items recovered, features, local environment and weather.

Name Access: Crepeelee site 2008 - field journals
Subject Access: Archaeology
Crepeelee locale
Crepeelee site DiMe-29
Crepeelee site 2008



Crepeele site 2007 - summary information

<http://archives.brandonu.ca/en/permalink/descriptions11813>

Part Of: RG 7 Beverley Nicholson fonds

Description Level: sub sub sub series

Series Number: 1.2.4.1

Accession Number: 1-2010

GMD: multiple media

Date Range: 2007

Material Details: Field journals have been scanned in multi-page PDF files. Artifact catalogues are PDF files in spreadsheet format. Photographs are in jpeg format.

History /

Biographical:

In 2007 the Brandon University Field School was held at both the Crepeele site in the Crepeele locale. Denise Ens instructed the school with Jessica McKenzie and Kate Decter as teaching assistants.

Seventeen units were excavated (XU3 - 46). Faunal (animal bone), lithics, fire cracked rock, diagnostic lithics and ceramics were recovered from the site.

Scope and Content:

Sub-sub-sub series contains: Summary information of field methodology, number and co-ordinates of excavations, personnel and their staff position.


Name Access: Crepeele site 2007 - summary information

Subject Access: Archaeology
Crepeele locale
Crepeele site DiMe-29
Crepeele site 2007

Documents

1.2.4.1_C07_summary.pdf

 Read PDF

 Download PDF



Crepeelee site 2003 - field journals

<http://archives.brandonu.ca/en/permalink/descriptions10217>

Part Of: RG 7 Beverley Nicholson fonds
Description Level: sub sub sub series
Series Number: 1.2.1.2
Accession Number: 1-2010
GMD: multiple media
Date Range: 2003
Material Details: Field journals have been scanned in multi-page PDF files.

History /

Biographical:

The Crepeelee site was excavated in 2003 as Crepeelee 3. Standard archaeological methods were used to excavate the units. Excavation units were initially numbered as units 10, 11, 12 & 13. These numbers have been changed on the catalogue to XU 110 – 113, due to duplication in 2005. Corresponding documents have been changed to reflect the amended excavation unit numbers, however the field journals may contain the initial numbers.

Scope and Content:

Record of daily observations at the site including: excavation methods, items recovered, features, local environment and weather.

Name Access: Crepeelee site 2003 - field journals
Subject Access: Archaeology
Crepeelee locale
Crepeelee site DiMe-29
Crepeelee site 2003



Crepeelee site 2005 - field journals

<http://archives.brandonu.ca/en/permalink/descriptions11727>

Part Of: RG 7 Beverley Nicholson fonds
Description Level: sub sub sub series
Series Number: 1.2.3.2
Accession Number: 1-2010
GMD: multiple media
Date Range: 2005
Material Details: Field journals have been scanned in multi-page PDF files.
History /
Biographical:

In 2005 the Brandon University Field School was held at both the Crepeelee and Graham sites in the Crepeelee locale.

At the Crepeelee site nine units were excavated (XU10-16 & 20, 21). Units 20 & 21 were referred to as Meadow in the notes but are considered part of the larger site based on recoveries.

Denise Ens instructed the school and James Graham was teaching assistant. Field journals were kept by both instructors.

Scope and Content:

Record of daily observations at the site including: excavation methods, items recovered, features, local environment and weather.

Name Access: Crepeelee site 2005 - field journals
Subject Access: Archaeology
Crepeelee locale
Crepeelee site DiMe-29
Crepeelee site 2005



Crepeelee site 2008 - Bev Nicholson field journal

<http://archives.brandonu.ca/en/permalink/descriptions11809>

Part Of: RG 7 Beverley Nicholson fonds
Description Level: sub sub sub series
Series Number: 1.2.5.2
File Number: 1
Accession Number: 1-2010
GMD: multiple media
Date Range: 2008
Physical Description: 6 pages
Material Details: Field journals have been scanned in multi-page PDF files.

History /

Biographical:

The Crepeelee site was identified from the results of the Casselman survey and excavated in 2003, 2004, 2005 and 2007.

In 2008 a small crew under the direction of Bev Nicholson returned to the site to gather further samples and verify profiles. Three units (XU 50, 51 and 52) were excavated. As well the Graham site 2008 was also excavated.

The field journals contain information about both the Crepeelee and Graham sites 2008.

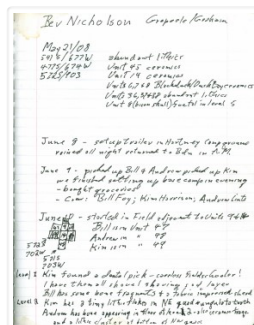
Scope and Content:

Record of daily observations at the site including: excavation methods, items recovered, features, local environment and weather.

Name Access: Crepeelee site 2008 - Bev Nicholson field journal

Subject Access: Archaeology
Crepeelee locale
Crepeelee site DiMe-29
Crepeelee site 2008

Documents



1.2.5.2.1_C08_BNicholson.pdf

Read PDF

Download PDF



Crepeelee site 2008 - Bill Foy field journal

<http://archives.brandonu.ca/en/permalink/descriptions11812>

Part Of: RG 7 Beverley Nicholson fonds

Description Level: sub sub sub series

Series Number: 1.2.5.2

File Number: 4

Accession Number: 1-2010

GMD: multiple media

Date Range: 2008
Physical Description: 20 pages
Material Details: Field journals have been scanned in multi-page PDF files.
History /
Biographical:

The Crepeelee site was identified from the results of the Casselman survey and excavated in 2003, 2004, 2005 and 2007.

In 2008 a small crew under the direction of Bev Nicholson returned to the site to gather further samples and verify profiles. Three units (XU 50, 51 and 52) were excavated. As well the Graham site 2008 was also excavated.

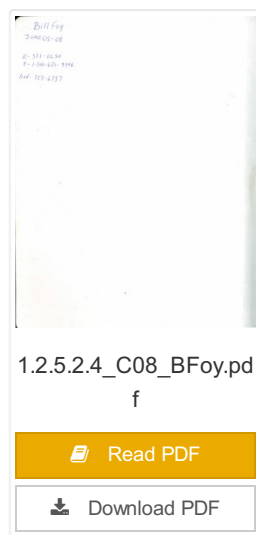
The field journals contain information about both the Crepeelee and Graham sites 2008.

Scope and Content:

Record of daily observations at the site including: excavation methods, items recovered, features, local environment and weather.

Name Access: Crepeelee site 2008 - Bill Foy field journal
Subject Access: Archaeology
Crepeelee locale
Crepeelee site DiMe-29
Crepeelee site 2008

Documents



Crepeelee site 2008 - Andrew Lints field journal

<http://archives.brandonu.ca/en/permalink/descriptions11963>

Part Of: RG 7 Beverley Nicholson fonds
Description Level: sub sub sub series
Series Number: 1.2.5.2



File Number: 2
Accession Number: 1-2010
GMD: multiple media
Date Range: 2008
Physical Description: 13 pages
Material Details: Field journals have been scanned in multi-page PDF files.
History /
Biographical:

The Crepeelee site was identified from the results of the Casselman survey and excavated in 2003, 2004, 2005 and 2007.

In 2008 a small crew under the direction of Bev Nicholson returned to the site to gather further samples and verify profiles. Three units (XU 50, 51 and 52) were excavated. As well the Graham site 2008 was also excavated.

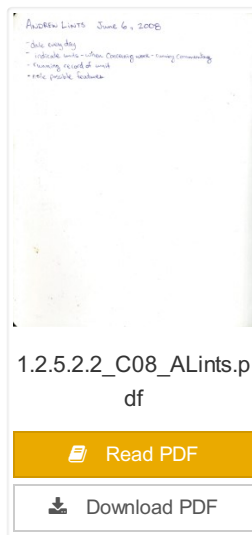
The field journals contain information about both the Crepeelee and Graham sites 2008.

Scope and Content:

Record of daily observations at the site including: excavation methods, items recovered, features, local environment and weather.

Name Access: Crepeelee site 2008 - Andrew Lints field journal
Subject Access: Archaeology
Crepeelee locale
Crepeelee site DiMe-29
Crepeelee site 2008

Documents



1.2.5.2.2_C08_ALints.p
df

 Read PDF

 Download PDF

Crepeelee site 2003 - summary information

<http://archives.brandonu.ca/en/permalink/descriptions11965>



Part Of:

RG 7 Beverley Nicholson fonds

Description Level:

sub sub sub series

Series Number:

1.2.1.1

Accession Number:

1-2010

GMD:

multiple media

Date Range:

2003

Material Details:

Field journals have been scanned in multi-page PDF files. Artifact catalogues are PDF files in spreadsheet format. Photographs are in jpeg format.

History /

Biographical:

The Crepeele site was identified from the results of the Casselman survey. The site is located within the Crepeele locale approximately 400 meters to the west of the Sarah site. The units were excavated by Crew Chief James Graham and the crew from the survey.

The Crepeele site was excavated in 2003 as Crepeele 3 with the units numbered as units 10, 11, 12 & 13. These numbers have been changed on the catalogue to XU 110 – 113, due to duplication in 2005. Corresponding documents have been changed but there may be some reference to the initial numbers in the field journals.

The artifacts recovered from these four excavations are faunal (animal bone), mainly bison, lithic materials (stone tools and flakes) and some ceramic (pottery). The artifact catalogue has over 600 records.

Scope and Content:

Sub-sub-sub series contains: Summary information of field methodology, number and co-ordinates of excavations, personnel and their staff position; Field journals are daily records of recoveries, features and activities at the site; Site records include excavation level and unit summaries, feature sheets, profiles; sample records and maps; Artifact catalogues are lists and identifications of all artifacts recovered; Photographs are of excavation units, features, the landscape and personnel.

Name Access:

Crepeele site 2003 - summary information

Subject Access:

Archaeology

Crepeele locale

Crepeele site DiMe-29

Crepeele site 2003

Crepeele site 2003 - summary information

Documents

1.2.1.1_

C03_summary.pdf

Read PDF



Sarah site 2004 - summary information

<http://archives.brandonu.ca/en/permalink/descriptions11856>

Part Of: RG 7 Beverley Nicholson fonds

Description Level: sub sub sub series

Series Number: 1.3.2.1

Accession Number: 1-2010

GMD: multiple media

Date Range: 2004

Material Details: Field journals have been scanned in multi-page PDF files. Artifact catalogues are PDF files in spreadsheet format. Photographs are in jpeg format.

History /

Biographical:

The Sarah site was initially chosen for excavation based on the results of the Casselman survey. The survey recovered significant amounts of faunal remains, some ceramics and lithics from the test pits. Excavations took place in 2003 at the Sarah site DiMe-28.

In 2004 further excavation took place as part of a Brandon University Archaeology Field School. Units 10 to 18 were excavated with Denise Ens as the instructor and James Graham teaching assistant.

Scope and Content:

Sub-sub-sub series contains: Summary information of field methodology, number and co-ordinates of excavations, personnel and their staff position.

Name Access: Sarah site 2004 - summary information

Subject Access: Archaeology
Crepelee locale
Sarah site DiMe-28
Sarah site 2004

Documents

ABU 11.1 Crepelee Locale
1.3 Sarah DiMe-28
1.3.2.1 Summary Information

In 2004 the Brandon University Field School was held at the Sarah site in the Crepelee locale. Nine units were excavated (10-18).

Denise Ens was the instructor and James Graham the Teaching Assistant.

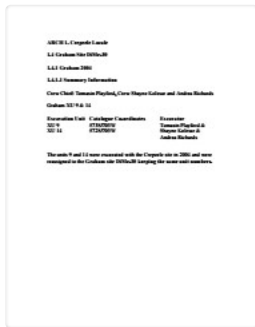
The following units were excavated:

Excavation Unit	Excavator	Recorder
Unit 10	ABU2004	Cathy Patterson
Unit 11	ABU2004	James McCreary
Unit 12	ABU2004	Anthony C. Corney
Unit 13	ABU2004	James Patterson
Unit 14	ABU2004	Eric Enns
Unit 15	ABU2004	Michael Graham
Unit 16	ABU2004	Paul Thompson
Unit 17	ABU2004	James Graham, Denise Ens
Unit 18	ABU2004	James Graham, Denise McCreary

1.3.2.1_Sarah04_Summary.pdf

Read PDF

Download PDF



Graham site 2004 - summary information

<http://archives.brandonu.ca/en/permalink/descriptions11888>

Part Of:	RG 7 Beverley Nicholson fonds
Description Level:	sub sub sub series
Series Number:	1.4.1.1
Accession Number:	1-2010
GMD:	multiple media
Date Range:	2004
Material Details:	Field journals have been scanned in multi-page PDF files. Artifact catalogues are PDF files in spreadsheet format. Photographs are in jpeg format.

History /

Biographical:

The Graham site was initially designated as a separate site early in the testing of the Crepeele locale due to what appeared to be a distinction between Early and Late Woodland ceramics. Subsequent testing has shown that this distinction was premature and that the cultural mosaic represented in the western section of the Crepeele locale does not readily separate in this manner.

Scope and Content:

Sub-sub-sub series contains: Summary information of field methodology, number and co-ordinates of excavations, personnel and their staff position.

Name Access:	Graham site 2004 - summary information
Subject Access:	Archaeology Crepeele locale Graham site DiMe-30 Graham site 2004

Documents

ARCH 1.1 Crepeele Locale
1.4 Graham Site 2004-20
1.4.1 Graham 2004
1.4.1.1 Summary Information
Core Unit: Thomas Playford, Core Wayne Kishner and Andrew Richards
Graham Site 1.4.1.1
Excavation Unit: Catalogue Coordinates
Site 1.4.1.1
Excavation: Thomas Playford & Wayne Kishner & Andrew Richards
The units 1 and 1.1 were excavated with the Crepeele site in 2004 and were re-excavated in the Graham site 2004-20 keeping the same unit numbers.

1.4.1.1_Graham04_Summary.pdf

Read PDF

Download PDF



Graham site 2004 - field journals

<http://archives.brandonu.ca/en/permalink/descriptions11890>

Part Of: RG 7 Beverley Nicholson fonds
Description Level: sub sub sub series
Series Number: 1.4.1.2
Accession Number: 1-2010
GMD: multiple media
Date Range: 2004
Material Details: Field journals have been scanned in multi-page PDF files.
History /
Biographical:

Graham units 9 and 14 were excavated with the Crepeele site in 2004 and were reassigned to the Graham site DiMe-30 keeping the same unit numbers.

Field journals from 2004 contain notes concerning the Graham, Sarah and Atkinson sites. The relevant page numbers are noted.

Scope and Content:

Record of daily observations at the site including: excavation methods, items recovered, features, local environment and weather.

Name Access: Graham site 2004 - field journals
Subject Access: Archaeology
Crepeele locale
Graham site DiMe-30
Graham site 2004



Graham site 2005 - summary information

<http://archives.brandonu.ca/en/permalink/descriptions11905>

Part Of: RG 7 Beverley Nicholson fonds
Description Level: sub sub sub series
Series Number: 1.4.2.1
Accession Number: 1-2010
GMD: multiple media
Date Range: 2005
Material Details: Field journals have been scanned in multi-page PDF files. Artifact catalogues are PDF files in spreadsheet format. Photographs are in jpeg format.

History /

Biographical:

The Graham site is located south of the Crepeele site. Due to the close proximity the Graham and Crepeele sites have both been the site of the Brandon University Archaeological Field School.

In 2005 both sites were excavated as part of the Field School experience instructed by Denise Ens with teaching assistant James Graham Six units (XU 1-6) were excavated at the Graham site.

Recoveries included faunal (mostly bison), lithics (points, scrapers), and ceramics.

Scope and Content:

Sub-sub-sub series contains: Summary information of field methodology, number and co-ordinates of excavations, personnel and their staff position.

- Name Access: Graham site 2005 - summary information
- Subject Access: Archaeology
- Crepeele locale
- Graham site DiMe-30
- Graham site 2005

Documents

ABCH 1.1 Crepeele Locale

1.2 Graham Site 2005 - 207

1.4.2.1 Graham 2005

1.4.2.1 Summary Information

Field School: Instructor Denise Ens, Assistant James Graham

Excavation Unit	Cartographic Coordinates	Excavator
XU 1	1100000N	Michael Stoddard
XU 2	1100000N	Michael Stoddard
XU 3	1100000N	Michael Stoddard
XU 4	1100000N	James Graham
XU 5	1100000N	James Graham
XU 6	1100000N	James Graham

1.4.2.1_Graham05_Summary.pdf

 Read PDF

 Download PDF



Graham site 2005 - field journals

<http://archives.bradonu.ca/en/permalink/descriptions11906>

Part Of: RG 7 Beverley Nicholson fonds
Description Level: sub sub sub series
Series Number: 1.4.2.2
Accession Number: 1-2010
GMD: multiple media
Date Range: 2005
Material Details: Field journals have been scanned in multi-page PDF files.

History /

Biographical:

The Graham site is located south of the Crepeele site. Due to the close proximity the Graham and Crepeele sites have both been the site of the Brandon University Archaeological Field School.

In 2005 both sites were excavated as part of the Field School experience instructed by Denise Ens with teaching assistant James Graham. Six units (XU 1-6) were excavated at the Graham site.

Field journals from 2005 contain notes concerning the Graham and Crepeele sites.

Scope and Content:

Record of daily observations at the site including: excavation methods, items recovered, features, local environment and weather.

Name Access: Graham site 2005 - field journals
Subject Access: Archaeology
Crepeele locale
Graham site DiMe-30
Graham site 2005



Graham site 2006 - summary information

<http://archives.bradonu.ca/en/permalink/descriptions11923>

Part Of: RG 7 Beverley Nicholson fonds
Description Level: sub sub sub series
Series Number: 1.4.3.1
Accession Number: 1-2010
GMD: multiple media
Date Range: 2006
Material Details: Field journals have been scanned in multi-page PDF files. Artifact catalogues are PDF files in spreadsheet format. Photographs are in jpeg format.

History /

Biographical:

The Graham site is located south of the Crepeele site. Due to the close proximity the Graham and Crepeele sites have both been the site of the Brandon University Archaeological Field School.

In 2006 a small Brandon University Archaeology Field School was conducted at the Graham site. Four excavations (XU 7, 8 15 & 16) were completed with Denise Ens Instructor and Jessica MacKenzie Teaching Assistant.

Recoveries included faunal (mostly bison), lithics and ceramics Recoveries included faunal (mostly bison), lithics (points, scrapers), and ceramics.

Scope and Content:

Sub-sub-sub series contains: Summary information of field methodology, number and co-ordinates of excavations, personnel and their staff position.

- Name Access:
- Graham site 2006 - summary information
- Subject Access:
- Archaeology
- Crepeele locale
- Graham site DiMe-30
- Graham site 2006

Documents

ABCH 1.1 Crepeele Locale
1.4 Graham Site 1500- 300
1.4.3 Graham 2006/
1.4.3.1 Summary Information
Brandon University Archaeology Field School: Denise Ens Instructor,
Jessica MacKenzie Assistant

Excavation Unit	Grid/Spot Coordinates	Excavator
XU 7	1510212N	Denise Ens
XU 8	1510212N	Denise Ens
XU 15	1509714W	Denise Ens, Jessica MacKenzie
XU 16	1509714W	Denise Ens, Jessica MacKenzie

1.4.3.1_
Graham06_Summary.p
df

 Read PDF

 Download PDF