

# S. J. McKee Archives



## Crepeelee site 2008 - field journals

<http://archives.brandonu.ca/en/permalink/descriptions11808>

Part Of: RG 7 Beverley Nicholson fonds

Description Level: sub sub sub series

Series Number: 1.2.5.2

Accession Number: 1-2010

GMD: multiple media

Date Range: 2007

Material Details: Field journals have been scanned in multi-page PDF files.

History /

Biographical:

The Crepeelee site was identified from the results of the Casselman survey and excavated in 2003, 2004, 2005 and 2007.

In 2008 a small crew under the direction of Bev Nicholson returned to the site to gather further samples and verify profiles. Three units (XU 50, 51 and 52) were excavated. As well the Graham site 2008 was also excavated.

The field journals contain information about both the Crepeelee and Graham sites.

Scope and Content:

Record of daily observations at the site including: excavation methods, items recovered, features, local environment and weather.

Name Access: Crepeelee site 2008 - field journals

Subject Access: Archaeology  
Crepeelee locale  
Crepeelee site DiMe-29  
Crepeelee site 2008



## Crepeelee site 2007 - field journals

<http://archives.brandonu.ca/en/permalink/descriptions11774>

Part Of: RG 7 Beverley Nicholson fonds  
Description Level: sub sub sub series  
Series Number: 1.2.4.2  
Accession Number: 1-2010  
GMD: multiple media  
Date Range: 2007  
Material Details: Field journals have been scanned in multi-page PDF files.

### History /

#### Biographical:

In 2007 the Brandon University Archaeology Field School was held at the Crepeelee site in the Crepeelee locale. Denise Ens instructed the school with Kate Decter & Jessica MacKenzie assistants.

Seventeen units were excavated XU30 - 46. Faunal (animal bone), lithics, fire cracked rock, diagnostic lithics and ceramics were recovered from the site. There are over 3050 records in the catalogue.

#### Scope and Content:

Record of daily observations at the site including: excavation methods, items recovered, features, local environment and weather.

Name Access: Crepeelee site 2007 - field journals  
Subject Access: Archaeology  
Crepeelee locale  
Crepeelee site DiMe-29  
Crepeelee site 2007



## Crepeelee site 2003 - field journals

<http://archives.brandonu.ca/en/permalink/descriptions10217>

Part Of: RG 7 Beverley Nicholson fonds  
Description Level: sub sub sub series  
Series Number: 1.2.1.2  
Accession Number: 1-2010  
GMD: multiple media  
Date Range: 2003  
Material Details: Field journals have been scanned in multi-page PDF files.

### History /

#### Biographical:

The Crepeelee site was excavated in 2003 as Crepeelee 3. Standard archaeological methods were used to excavate the units. Excavation units were initially numbered as units 10, 11, 12 & 13. These numbers have been changed on the catalogue to XU 110 – 113, due to duplication in 2005. Corresponding documents have been changed to reflect the amended excavation unit numbers, however the field journals may contain the initial numbers.

#### Scope and Content:

Record of daily observations at the site including: excavation methods, items recovered, features, local environment and weather.

Name Access: Crepeelee site 2003 - field journals  
Subject Access: Archaeology  
Crepeelee locale  
Crepeelee site DiMe-29  
Crepeelee site 2003



## Crepeelee site 2005 - photographs

<http://archives.brandonu.ca/en/permalink/descriptions11762>

Part Of: RG 7 Beverley Nicholson fonds

Description Level: sub sub sub series

Series Number: 1.2.3.5

Accession Number: 1-2010

GMD: graphic

Date Range: 2005

Physical Description: 7 photographs

Material Details: JPEGs

History /

Biographical:

Numerous photographs were taken during the excavation of the Crepeelee site 2005. A selection of photographs of features and personnel performing usual field tasks such as surveying, measuring, excavating, and taking photographs were selected for the archive.

Scope and Content:

Sub sub sub series consists of photographs taken during excavation of the Crepeelee site 2005.

Name Access: Crepeelee site 2005 - photographs

Subject Access: Archaeology  
Crepeelee locale  
Crepeelee site DiMe-29  
Crepeelee site 2005



## Crepeelee site 2005 - site records

<http://archives.brandonu.ca/en/permalink/descriptions11752>

Part Of: RG 7 Beverley Nicholson fonds  
Description Level: sub sub sub series  
Series Number: 1.2.3.3  
Accession Number: 1-2010  
GMD: multiple media  
Date Range: 2005  
Material Details: Site records have been scanned in multi-page PDF files.

### History /

#### Biographical:

In 2005 the Brandon University Field School was held at both the Crepeelee and Graham sites in the Crepeelee locale.

Denise Ens instructed the school and James Graham was teaching assistant.

At the Crepeelee site nine units were excavated (XU10-16 & 20, 21). Units 20 & 21 were referred to as Meadow in the notes but are considered part of the larger site based on recoveries

#### Scope and Content:

Site records of excavation units may include: level summaries, floor plans, feature sheets, wall profiles, unit summaries and any other additional information relating to the unit.

Name Access: Crepeelee site 2005 - site records  
Subject Access: Archaeology  
Crepeelee locale  
Crepeelee site DiMe-29  
Crepeelee site 2005



## Graham site 2005 - field journals

<http://archives.brandonu.ca/en/permalink/descriptions11906>

Part Of: RG 7 Beverley Nicholson fonds  
Description Level: sub sub sub series  
Series Number: 1.4.2.2  
Accession Number: 1-2010  
GMD: multiple media  
Date Range: 2005  
Material Details: Field journals have been scanned in multi-page PDF files.  
History /  
Biographical:

The Graham site is located south of the Crepeele site. Due to the close proximity the Graham and Crepeele sites have both been the site of the Brandon University Archaeological Field School.

In 2005 both sites were excavated as part of the Field School experience instructed by Denise Ens with teaching assistant James Graham. Six units (XU 1-6) were excavated at the Graham site.

Field journals from 2005 contain notes concerning the Graham and Crepeele sites.

### Scope and Content:

Record of daily observations at the site including: excavation methods, items recovered, features, local environment and weather.

Name Access: Graham site 2005 - field journals  
Subject Access: Archaeology  
Crepeele locale  
Graham site DiMe-30  
Graham site 2005



## Crepeele site 2005 - summary information

<http://archives.brandonu.ca/en/permalink/descriptions11749>

Part Of: RG 7 Beverley Nicholson fonds  
Description Level: sub sub sub series  
Series Number: 1.2.3.1  
Accession Number: 1-2010  
GMD: multiple media  
Date Range: 2005  
Material Details: Field journals have been scanned in multi-page PDF files. Artifact catalogues are PDF files in spreadsheet format. Photographs are in jpeg format.

History /

Biographical:

In 2005 the Brandon University Field School was held at both the Crepeele and Graham sites in the Crepeele locale. Denise Ens instructed the school and James Graham was teaching assistant.

Nine units were excavated (XU10-16 & 20, 21). Units 20 & 21 were referred to as Meadow in the notes but are considered part of the larger site based on recoveries

Faunal (animal bone), lithics, fire cracked rock, diagnostic lithics and ceramics were recovered from the site.

Scope and Content:

Sub-sub-sub series contains: Summary information of field methodology, number and co-ordinates of excavations, personnel and their staff position.

- Name Access:
- Crepeele site 2005 - summary information
- Subject Access:
- Archaeology
- Crepeele locale
- Crepeele site DiMe-29
- Crepeele site 2005

Documents

ABC 10.1.1 Crepeele Locale  
1.2.1 Crepeele Site DiMe-29  
1.2.2 Crepeele 2005  
1.2.3.1 Summary Information

In 2005 the Brandon University Field School was held at both the Crepeele and Graham sites in the Crepeele locale.  
At the Crepeele site nine units were excavated. Denise Ens instructed the school and James Graham was teaching assistant.

XU 10-16 and XU 20 & 21 history.

Excavation Unit	Latitude Co-ordinates	Excavator
XU 10	51°26'N	James Ens
XU 11	51°26'N	James Ens
XU 12	51°26'N	James Ens
XU 13	51°26'N	James Ens
XU 14	51°26'N	James Ens
XU 15	51°26'N	James Ens
XU 16	51°26'N	James Ens
XU 20	51°26'N	James Ens
XU 21	51°26'N	James Ens

XU 20 & 21 was referred to as Meadow in the notes but is considered part of the larger site based on recoveries.

1.2.3.1\_C05\_summary.pdf

Read PDF

Download PDF



## Crepeelee site 2005 - artifact catalogue

<http://archives.brandonu.ca/en/permalink/descriptions11761>

Part Of: RG 7 Beverley Nicholson fonds

Description Level: sub sub sub series

Series Number: 1.2.3.4

Accession Number: 1-2010

GMD: textual records

Date Range: 2005

Physical Description: 340 pages

Material Details: PDF

History /

Biographical:

Artifact catalogue containing 1573 records from Crepeelee site 2005.

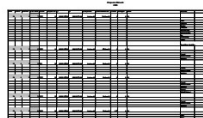
Scope and Content:

Spreadsheet containing information about the artifacts recovered, including: unit, level, artifact number, catalogue number, depth, co-ordinates, entry date, date recovered, count, weight, UTM co-ordinates, notes (excavators initials and comments) and artifact identification.

Name Access: Crepeelee site 2005 - artifact catalogue

Subject Access: Archaeology  
Crepeelee locale  
Crepeelee site DiMe-29  
Crepeelee site 2005

### Documents



1.2.3.4\_C05\_artcat.pdf

 Read PDF

 Download PDF



## Crepeelee site 2008 - Bev Nicholson field journal

<http://archives.brandonu.ca/en/permalink/descriptions11809>

Part Of: RG 7 Beverley Nicholson fonds

Description Level: sub sub sub series

Series Number: 1.2.5.2

File Number: 1

Accession Number: 1-2010

GMD: multiple media

Date Range: 2008

Physical Description: 6 pages

Material Details: Field journals have been scanned in multi-page PDF files.

History /

Biographical:

The Crepeele site was identified from the results of the Casselman survey and excavated in 2003, 2004, 2005 and 2007.

In 2008 a small crew under the direction of Bev Nicholson returned to the site to gather further samples and verify profiles. Three units (XU 50, 51 and 52) were excavated. As well the Graham site 2008 was also excavated.

The field journals contain information about both the Crepeele and Graham sites 2008.

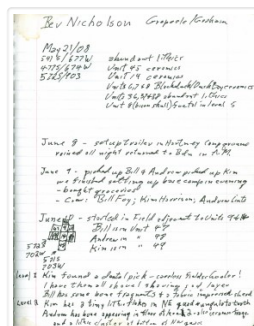
Scope and Content:

Record of daily observations at the site including: excavation methods, items recovered, features, local environment and weather.

Name Access: Crepeele site 2008 - Bev Nicholson field journal

Subject Access: Archaeology  
Crepeele locale  
Crepeele site DiMe-29  
Crepeele site 2008

## Documents



1.2.5.2.1\_C08\_BNichol  
son.pdf

 Read PDF

 Download PDF

## Crepeele site 2008 - Bill Foy field journal

<http://archives.brandonu.ca/en/permalink/descriptions11812>

Part Of: RG 7 Beverley Nicholson fonds

Description Level: sub sub sub series

Series Number: 1.2.5.2



File Number: 4  
Accession Number: 1-2010  
GMD: multiple media  
Date Range: 2008  
Physical Description: 20 pages  
Material Details: Field journals have been scanned in multi-page PDF files.  
History /  
Biographical:

The Crepeelee site was identified from the results of the Casselman survey and excavated in 2003, 2004, 2005 and 2007.

In 2008 a small crew under the direction of Bev Nicholson returned to the site to gather further samples and verify profiles. Three units (XU 50, 51 and 52) were excavated. As well the Graham site 2008 was also excavated.

The field journals contain information about both the Crepeelee and Graham sites 2008.

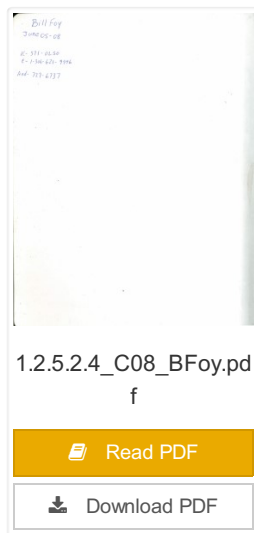
#### Scope and Content:

Record of daily observations at the site including: excavation methods, items recovered, features, local environment and weather.

Name Access: Crepeelee site 2008 - Bill Foy field journal  
Subject Access: Archaeology  
Crepeelee locale  
Crepeelee site DiMe-29  
Crepeelee site 2008

## Documents

---



1.2.5.2.4\_C08\_BFoy.pdf

 Read PDF

 Download PDF

Crepeelee site 2008 - Andrew Lints field journal

<http://archives.brandonu.ca/en/permalink/descriptions11963>



Part Of: RG 7 Beverley Nicholson fonds

Description Level: sub sub sub series

Series Number: 1.2.5.2

File Number: 2

Accession Number: 1-2010

GMD: multiple media

Date Range: 2008

Physical Description: 13 pages

Material Details: Field journals have been scanned in multi-page PDF files.

History /  
Biographical:

The Crepeelee site was identified from the results of the Casselman survey and excavated in 2003, 2004, 2005 and 2007.

In 2008 a small crew under the direction of Bev Nicholson returned to the site to gather further samples and verify profiles. Three units (XU 50, 51 and 52) were excavated. As well the Graham site 2008 was also excavated.

The field journals contain information about both the Crepeelee and Graham sites 2008.

#### Scope and Content:

Record of daily observations at the site including: excavation methods, items recovered, features, local environment and weather.

Name Access: Crepeelee site 2008 - Andrew Lints field journal

Subject Access: Archaeology  
Crepeelee locale  
Crepeelee site DiMe-29  
Crepeelee site 2008

## Documents

---



1.2.5.2.2\_C08\_ALints.pdf

 Read PDF

 Download PDF



## Crepeelee site 2007 - photographs

<http://archives.brandonu.ca/en/permalink/descriptions11779>

Part Of: RG 7 Beverley Nicholson fonds

Description Level: sub sub sub series

Series Number: 1.2.4.5

Accession Number: 1-2010

GMD: graphic

Date Range: 2007

Physical Description: 9 photographs

Material Details: JPEGs

History /

Biographical:

Numerous photographs were taken during the excavation of the Crepeelee site 2007. A selection of photographs of features and personnel performing usual field tasks such as surveying, measuring, excavating, and taking photographs were selected for the archive.

Scope and Content:

Sub sub sub series consists of photographs taken during excavation of the Crepeelee site 2007.

Name Access: Crepeelee site 2007 - photographs

Subject Access: Archaeology  
Crepeelee locale  
Crepeelee site DiMe-29  
Crepeelee site 2007



## Crepeelee site 2008 - photographs

<http://archives.brandonu.ca/en/permalink/descriptions11964>

Part Of: RG 7 Beverley Nicholson fonds

Description Level: sub sub sub series

Series Number: 1.2.5.5

Accession Number: 1-2010

GMD: graphic

Date Range: 2008

Physical Description: 11 photographs

Material Details: JPEGs

History /

Biographical:

Numerous photographs were taken during the excavation of the Crepeelee site 2008. A selection of photographs of features and personnel performing usual field tasks such as surveying, measuring, excavating, and taking photographs were selected for the archive.

Scope and Content:

Sub sub sub series consists of photographs taken during excavation of the Crepeelee site 2008.

Name Access: Crepeelee site 2008 - photographs

Subject Access: Archaeology  
Crepeelee locale  
Crepeelee site DiMe-29  
Crepeelee site 2008



## Crepeelee site 2004 - photographs

<http://archives.brandonu.ca/en/permalink/descriptions11730>

Part Of: RG 7 Beverley Nicholson fonds

Description Level: sub sub sub series

Series Number: 1.2.2.5

Accession Number: 1-2010

GMD: graphic

Date Range: 2004

Physical Description: 6 photographs

Material Details: JPEGs

History /

Biographical:

Numerous photographs were taken during the excavation of the Crepeelee site 2004. A selection of photographs of features and personnel performing usual field tasks such as surveying, measuring, excavating, and taking photographs were selected for the archive.

Scope and Content:

Sub sub sub series consists of photographs taken during excavation of the Crepeelee site 2004.

Name Access: Crepeelee site 2004 - photographs

Subject Access: Archaeology  
Crepeelee locale  
Crepeelee site DiMe-29  
Crepeelee site 2004



## Crepeelee site 2003 - photographs

<http://archives.brandonu.ca/en/permalink/descriptions11714>

Part Of: RG 7 Beverley Nicholson fonds

Description Level: sub sub sub series

Series Number: 1.2.1.5

Accession Number: 1-2010

GMD: graphic

Date Range: 2003

Physical Description: 5 photographs

Material Details: JPEGs

History /

Biographical:

Numerous photographs were taken during the excavation of the Crepeelee site 2003. A selection of photographs of personnel performing usual field tasks such as surveying, measuring, excavating, and taking photographs were selected for the archive.

Scope and Content:

Sub sub sub series consists of photographs taken during excavation of the Crepeelee site 2003.

Name Access: Crepeelee site 2003 - photographs

Subject Access: Archaeology  
Crepeelee locale  
Crepeelee site DiMe-29  
Crepeelee site 2003



## Crepeelee site 2004 - site records

<http://archives.brandonu.ca/en/permalink/descriptions11728>

Part Of: RG 7 Beverley Nicholson fonds  
Description Level: sub sub sub series  
Series Number: 1.2.2.3  
Accession Number: 1-2010  
GMD: multiple media  
Date Range: 2004  
Material Details: Site records have been scanned in multi-page PDF files.

### History /

#### Biographical:

The Crepeelee site was identified from the results of the Casselman survey and excavated in 2003. In 2004 the site was funded through the SCAPE project, directed by Bev Nicholson. The units were excavated by Crew Chief Tomasin Playford and crew.

Eight units were excavated in 2004, XU 1 to XU 8. Each unit has a separate pdf file.

#### Scope and Content:

Site records of excavation units may include: level summaries, floor plans, feature sheets, wall profiles, unit summaries and any other additional information relating to the unit.

Name Access: Crepeelee site 2004 - site records  
Subject Access: Archaeology  
Crepeelee locale  
Crepeelee site DiMe-29  
Crepeelee site 2004



## Crepeelee site 2003 - site records

<http://archives.brandonu.ca/en/permalink/descriptions11715>

Part Of: RG 7 Beverley Nicholson fonds  
Description Level: sub sub sub series  
Series Number: 1.2.1.3  
Accession Number: 1-2010  
GMD: multiple media  
Date Range: 2003  
Material Details: Site records have been scanned in multi-page PDF files.

### History /

### Biographical:

The Crepeelee site was excavated in 2003 as Crepeelee 3. Standard archaeological methods were used to excavate the units. Site records of excavation units XU 110 – 113 are in separate pdf files.

### Scope and Content:

Site records of excavation units may include: level summaries, floor plans, feature sheets, wall profiles, unit summaries and any other additional information relating to the unit.

Name Access: Crepeelee site 2003 - site records

Subject Access: Archaeology  
Crepeelee locale  
Crepeelee site DiMe-29  
Crepeelee site 2003



## Graham site 2004 - field journals

<http://archives.brandonu.ca/en/permalink/descriptions11890>

Part Of: RG 7 Beverley Nicholson fonds  
Description Level: sub sub sub series  
Series Number: 1.4.1.2  
Accession Number: 1-2010  
GMD: multiple media  
Date Range: 2004  
Material Details: Field journals have been scanned in multi-page PDF files.

### History /

#### Biographical:

Graham units 9 and 14 were excavated with the Crepeele site in 2004 and were reassigned to the Graham site DiMe-30 keeping the same unit numbers.

Field journals from 2004 contain notes concerning the Graham, Sarah and Atkinson sites. The relevant page numbers are noted.

### Scope and Content:

Record of daily observations at the site including: excavation methods, items recovered, features, local environment and weather.

Name Access: Graham site 2004 - field journals  
Subject Access: Archaeology  
Crepeele locale  
Graham site DiMe-30  
Graham site 2004



## Graham site 2006 - field journals

<http://archives.brandonu.ca/en/permalink/descriptions11924>

Part Of: RG 7 Beverley Nicholson fonds  
Description Level: sub sub sub series  
Series Number: 1.4.3.2  
Accession Number: 1-2010  
GMD: multiple media  
Date Range: 2006  
Material Details: Field journals have been scanned in multi-page PDF files.

### History /

#### Biographical:

In 2006 a small Brandon University Archaeology Field School was conducted at the Graham site. Four excavations (XU 7, 8 15 & 16) were completed with Denise Ens Instructor and Jessica MacKenzie Teaching Assistant.

Field journals from 2006 contain notes concerning the Graham and Crepeele sites.

#### Scope and Content:

Record of daily observations at the site including: excavation methods, items recovered, features, local environment and weather.

Name Access: Graham site 2006 - field journals  
Subject Access: Archaeology  
Crepeele locale  
Graham site DiMe-30  
Graham site 2006



## Graham site 2008 - field journals

<http://archives.brandonu.ca/en/permalink/descriptions11959>

Part Of: RG 7 Beverley Nicholson fonds  
Description Level: sub sub sub series  
Series Number: 1.4.4.2  
Accession Number: 1-2010  
GMD: multiple media  
Date Range: 2008  
Material Details: Field journals have been scanned in multi-page PDF files.

### History /

#### Biographical:

In 2008 Brandon University Archaeology returned to the Crepeele locale to conduct further testing at the Graham and Crepeele sites. Four units (XU 47-49 & 53) were excavated at Graham 2008 in order to collect samples and add further data to previous excavations. The usual excavation methodology was employed.

The small crew was directed by Bev Nicholson with Crew of Bill Foy, Andrew Lints & Kim Harrison

Recoveries included faunal (mostly bison), lithics and ceramics.

#### Scope and Content:

Record of daily observations at the site including: excavation methods, items recovered, features, local environment and weather.

Name Access: Graham site 2008 - field journals  
Subject Access: Archaeology  
Crepeele locale  
Graham site DiMe-30  
Graham site 2008