

# S. J. McKee Archives

---



## Dominion Exhibition Display Building II|Mercantile Display Building

<http://archives.brandonu.ca/en/permalink/descriptions9806>

Part Of: RG 11 Lawrence Stuckey fonds

Description Level: Item

Series Number: 3.1

Item Number: 1-2002.3.1M19

Accession Number: 1-2002

GMD: graphic

Date Range: [191-?]

Physical Description: 3 1/2" x 5"

Material Details: Negative

History /

Biographical:

[Display Building II, the last surviving building of those constructed for the Dominion Fair held in Brandon in 1913, has been named one of the 10 most endangered historic buildings in the country by the Heritage Canada Foundation. P.E. 10/07/09.]

Custodial History:

For custodial history see the collection level description of the Lawrence Stuckey collection.

Scope and Content:

Dominion Exhibition Display Building II at Brandon fairgrounds

Also known as the Mercantile Display Building

Notes: Architect's drawing

Built for the Dominion Fair of 1913 with some alterations from the proposed design shown.

Name Access: Dominion Exhibition Buildings

Brandon Fairgrounds

Subject Access: fairs

exhibitions

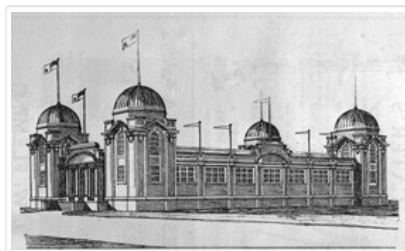
Brandon Exhibitions & Facilities

Repro Restriction: The McKee Archives is the copyright holder for the Stuckey materials.

Storage Location: Lawrence Stuckey collection

### Images

---





## Canadian imperial bank of commerce

<http://archives.brandonu.ca/en/permalink/descriptions8665>

Part Of: RG 11 Lawrence Stuckey fonds

Creator: Lawrence Stuckey

Description Level: Item

Series Number: 3.9

Item Number: 1-2002.3.9.44

Accession Number: 1-2002

GMD: graphic

Date Range: 1967

Physical Description: 4.5" x 3.25" (b/w)

### Scope and Content:

Photograph is looking northwest from approximately the corner of Rosser Avenue and 8th Street and shows the Canadian Imperial Bank of Commerce, Mayfields Ladies Wear, Knowlton's Shoe Shop, Bata Shoe Store and Lucette's Hat Shop.

Repro Restriction: The McKee Archives is the copyright holder for the Stuckey materials.

Location Original: 1-2002.3.1EA10

Storage Location: RG 5 photograph storage drawer

### Images

---





## Canadian Imperial Bank of Commerce

<http://archives.brandonu.ca/en/permalink/descriptions9546>

Part Of: RG 11 Lawrence Stuckey fonds

Creator: L.A. Stuckey

Description Level: Item

Series Number: 3.1

Item Number: 1-2002.3.1EA10

Accession Number: 1-2002

GMD: graphic

Date Range: 1967

Physical Description: 2 1/2" x 2 1/2"

Material Details: Negative

Custodial History:

For custodial history see the collection level description of the Lawrence Stuckey collection.

Scope and Content:

A newly built branch of the Canadian Imperial Bank of Commerce

Notes: Located on the northwest corner of 8th Street and Rosser Ave.

Name Access: Canadian Imperial Bank of Commerce

Subject Access: businesses

banks

Brandon business buildings & facilities after 1940

Repro Restriction: The McKee Archives is the copyright holder for the Stuckey materials.

Location Copy: 1-2002.3.9.44

Storage Location: Lawrence Stuckey collection

### Images

---





## Big Four Sales - furniture

<http://archives.brandonu.ca/en/permalink/descriptions11421>

Part Of: CKX fonds  
 Creator: CKX  
 Description Level: Item  
 Item Number: 11-2010.B29b  
 Accession Number: 11-2010  
 GMD: graphic  
 Date Range: after 1954  
 Physical Description: 5" x 4" (b/w)  
 Material Details: Negative  
 Custodial History:

See fonds level of the CKX records for custodial history.

Scope and Content:

Image show furniture for sale at Big Four Sales.

Name Access: CKX  
 Big Four Sales  
 Subject Access: Buildings  
 commercial buildings  
 stores  
 store interiors  
 Storage Location: CKX fonds - 2010 accessions

### Images

---



## Brandon College Academic III

<http://archives.brandonu.ca/en/permalink/descriptions2540>

Part Of: Brandon University Photograph Collection  
 Creator: Photographer: Davidson Studio  
 Description Level: Item  
 Series Number: 9  
 Item Number: BUPC 9.21  
 GMD: graphic

Date Range: 1921  
Physical Description: 10" x 13" (b/w)  
Physical Condition: Photograph has minor water damage on the bottom left that has resulted in a slight bubbling.

Scope and Content:

Item consists of portraits of the members of the Brandon College Academic 3 class, as well as photographs of H.P. Whidden (Brandon College President), Jennie Turnbull (Honorary President) and J.E. Howes (Principal).

Top Row (L to R): M. Rose; H. Henn; J. Carns; Russel Maxwell; B. Pollock; G. Berquist; and O. Peddicord.

Second Row (L to R): F. Westcott; H. Adolph; D. Bourke; J. Bocskay; M. Gronberg; and V. Philip.

Third Row (L to R): F. Friend; Miss J.M. Turnbull (Hon. President); Dr. Whidden (President); J.E. Howes (Principal); and E. Harkness.

Fourth Row (L to R): J. Kippen; A. Gronberg; G. Magnuson; William Philip; L. Smith; M. Holman; and S. Ledingham.

Fifth Row (L to R): C. Hembling; M. Young; M. Hall; and R. McLean.

Sixth Row (L to R): A. MacPherson; C. Lindbow; E. Rand; V. Robinson; C. McNeil; and W. Cranston.

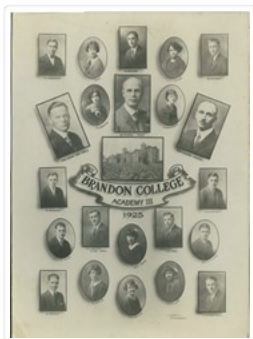
Bottom Row (L to R): C.H. Henderson; R. Whidden; J. Robertson; and F. Adolph.

Subject Access: class portraits  
Storage Range: Oversize drawer 4

## Images

---





## Brandon College Academy III

<http://archives.brandonu.ca/en/permalink/descriptions2543>

Part Of: Brandon University Photograph Collection  
 Creator: Photographer: F. Weekes  
 Description Level: Item  
 Series Number: 9  
 Item Number: BUPC 9.30  
 GMD: graphic  
 Date Range: 1925  
 Physical Description: 10" x 14" (b/w)

### Scope and Content:

Item consists of portraits of the members of Brandon College Academy III class of 1925.

Top Row (L to R): A. Thomson; D. Hill; R. Wicklund; E. Allen; and S. Mitchell.

Second Row (L to R): Professor Jones (Honorary President); V. Lissaman; Dr. MacNeill (Dean); R. Kingshott; and Professor Dennison (Principal).

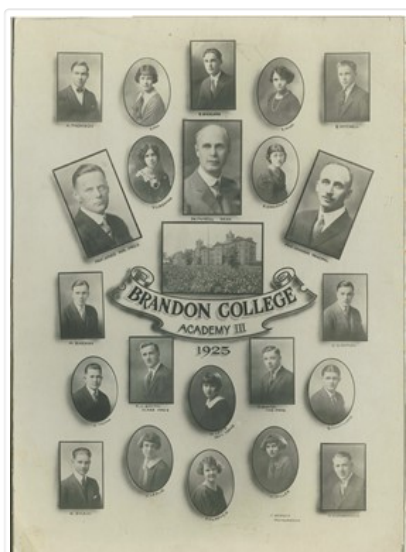
Third Row (L to R): M. Shewan and C. Gammon.

Fourth Row (L to R): J. Young; C.J. Smith (Class Pres.); H. Lewis (Sect. Treas); H. Booth (Vice Pres.); and B. Manthorne.

Bottom Row (L to R): G. Shaw; J. Leslie; F. McKenzie; M. Miller; and H. Clendenning.

Subject Access: class portraits  
 Storage Range: Oversize drawer 4

### Images



## Brandon College Academic III



<http://archives.brandonu.ca/en/permalink/descriptions2544>

Part Of: Brandon University Photograph Collection  
Creator: Photographer: Clark J. Smith  
Description Level: Item  
Series Number: 9  
Item Number: BUPC 9.31  
GMD: graphic  
Date Range: 1926  
Physical Description: 10.5" x 13" (b/w)  
Physical Condition: There are a few small tears around the edges of the photograph and one ink stain in the bottom right corner.

Scope and Content:

Items consists of portraits for the members of Brandon College's Academic III class in 1926 and their motto "Ad Astra Per Aspera"

Top Row (L to R): W.C. Clark; R.O. Shuttleworth; R. W. Rederburg; M. Sopp; M.F. Windrim; F. Stade; K.J. Higgins; and J. Winstock.

Second Row (L to R): M. Bromley; A.D. Stade; Miss I. Osborne (Hon. Pres.); L. Leigh; and M. McCowan.

Third Row (L to R): J. G. Marshall; E. Powell; G. Gooden; Mr. E. D. Renaud (Ac' Principal); Dr. H.P. Whidden (Principal); A. Turnbull; E.E. King; and M. Pollock.

Fourth Row (L to R): J. McLellan; J.A. Strahl; D.H. Stromgren; and M. Mischfeter.

Fifth Row (L to R): E. Barr; R.D. Matthews; K. McNaught; C.E. Erickson; B. Archer; and T.W. Willey.

Bottom Row (L to R): L. King; C.A. Bearisto; W. Phelp; E. Calverly; F.E. Adolph; J.E. Hembling; E. Hinsley; and W.M. McLellan.

Subject Access: class portraits  
Storage Range: Oversize drawer 4

## Images







## Old hand pump, public well by road, Lavinia, Manitoba

<http://archives.brandonu.ca/en/permalink/descriptions10545>

Part Of: RG 11 Lawrence Stuckey fonds

Creator: L.A. Stuckey

Description Level: Item

Series Number: 3.3

Item Number: 1-2002.3.3.CNR[200]

Accession Number: 1-2002

GMD: graphic

Date Range: February 28, 1979

Physical Description: 2.25" x 2.25" (b/w)

Material Details: Negative

Custodial History:

For custodial history see the collection level description of the Lawrence Stuckey collection.

Scope and Content:

Image of an old hand pump, public well by road, at Lavinia, Manitoba, taken along the CNR line, Rapid City substation.

Name Access: CNR

Lavinia, Manitoba

Subject Access: railways

water

Repro Restriction: The McKee Archives is the copyright holder of the Stuckey materials.

Storage Location: Lawrence Stuckey collection

### Images

---





## Atkinson site 2004 - measuring hearth

<http://archives.brandonu.ca/en/permalink/descriptions12206>

Part Of: RG 7 Beverley Nicholson fonds

Description Level: Item

Series Number: 2.1.2.5

Item Number: 2.1.2.5.1

Accession Number: 1-2010

GMD: graphic

Date Range: 2004

Physical Description: 2048 x1536 (1428)

Material Details: JPEG

History /

Biographical:

Photograph taken during 2004 Brandon University Archaeology excavations at Atkinson site.

Scope and Content:

Andrea Richards and Sarah Graham measuring a hearth.

Name Access: Atkinson site 2004 - measuring a hearth

Subject Access: Archaeology  
North lauder locale  
Atkinson site DiMe-27  
Atkinson site 2004 photographs

### Images

---





## Who Am I?

<http://archives.brandonu.ca/en/permalink/descriptions12860>

Part Of: CKX fonds  
Creator: CKX  
Description Level: Item  
Series Number: W  
Item Number: 11-2010.W12  
Accession Number: 11-2010  
GMD: graphic  
Date Range: after 1954  
Physical Description: 5" x 4" (b/w)  
Material Details: Negative  
Custodial History:

See fonds level of the CKX records for custodial history.

### Scope and Content:

Image of people part of a game show.

Name Access: CKX  
Subject Access: persons  
contests  
television segments  
on set  
television broadcasting

Storage Location: CKX fonds - 2010 accessions

## Images

---





## Crepeelee site 2003 - Todd Kristensen measuring

<http://archives.brandonu.ca/en/permalink/descriptions11719>

Part Of: RG 7 Beverley Nicholson fonds

Description Level: Item

Series Number: 1.2.1.5

Item Number: 1.2.1.5.3

Accession Number: 1-2010

GMD: graphic

Date Range: 2003

Physical Description: 432x576 (195 KB )

Material Details: JPEG

Scope and Content:

Todd Kristensen measuring at the Crepeelee site.

Name Access: Crepeelee site 2003 - Todd Kristensen measuring

Subject Access: Archaeology  
Crepeelee locale  
Crepeelee site DiMe-29  
Crepeelee site 2003  
Crepeelee site 2003 - photographs

### Images

---





## Great Northern Railway depot

<http://archives.brandonu.ca/en/permalink/descriptions6436>

Part Of:	Alf Fowler collection
Description Level:	Item
Item Number:	6-1999.11
Accession Number:	6-1999
Physical Description:	9.5" x 7" (b/w)
Storage Range:	RG 5 Western Manitoba Manuscript collection - photograph storage drawer

### Images

---



## Great Northern Engine 538

<http://archives.brandonu.ca/en/permalink/descriptions9997>

Part Of:	RG 11 Lawrence Stuckey fonds
Description Level:	Item
Series Number:	3.1
Item Number:	1-2002.3.1PE20
Accession Number:	1-2002
GMD:	graphic
Date Range:	[19-?]
Physical Description:	1 1/2" x 3"
Material Details:	Negative

History /

Biographical:

According to Stuckey and Bain (1996), "The Brandon, Saskatchewan & Hudson's Bay Railway was built and operated as a totally owned subsidiary of the Great Northern Railway. Construction commenced in late 1905 and by the end of 1905, less than a mile of track had been laid north of the boundary at St. John. In 1906, the remaining 68.6 miles to Brandon were laid and service commenced that year. During the Depression of the 1930s, traffic declined significantly and the entire branch was abandoned in 1936. Over much of the branch's length, the ties and rails were laid on the prairie without ballast and today little remains of the line apart from traces where there were cuts and bridges." (p. 18)

Stuckey, L. A., & Bain, D. M. (1996). The Great Northern and Northern Pacific railways in Canada. Calgary, Alberta: British Railway Modellers of North America.

Custodial History:

For custodial history see the collection level description of the Lawrence Stuckey collection.

Scope and Content:

Great Northern Railway engine 538

Notes:	Great Northern Railway engine 538 was a class F-1 2-8-0 ["Consolidation" type], and often worked freight trains to Brandon.
Name Access:	Brandon, Saskatchewan & Hudson's Bay Railway Great Northern Railway
Subject Access:	railroads railways locomotives Great Northern Railway from Church's Ferry ND to Brandon MB
Repro Restriction:	The McKee Archives is the copyright holder for the Stuckey materials.
Storage Location:	Lawrence Stuckey collection

## Images

---



## Great Northern Engine 716

<http://archives.brandonu.ca/en/permalink/descriptions9998>

Part Of:	RG 11 Lawrence Stuckey fonds
Description Level:	Item
Series Number:	3.1
Item Number:	1-2002.3.1PE21
Accession Number:	1-2002
GMD:	graphic
Date Range:	[19-?]
Physical Description:	1 1/2" x 3"
Material Details:	Negative

## History /

### Biographical:

According to Stuckey and Bain (1996), "The Brandon, Saskatchewan & Hudson's Bay Railway was built and operated as a totally owned subsidiary of the Great Northern Railway. Construction commenced in late 1905 and by the end of 1905, less than a mile of track had been laid north of the boundary at St. John. In 1906, the remaining 68.6 miles to Brandon were laid and service commenced that year. During the Depression of the 1930s, traffic declined significantly and the entire branch was abandoned in 1936. Over much of the branch's length, the ties and rails were laid on the prairie without ballast and today little remains of the line apart from traces where there were cuts and bridges." (p. 18)

Stuckey, L. A., & Bain, D. M. (1996). The Great Northern and Northern Pacific railways in Canada. Calgary, Alberta: British Railway Modellers of North America.

### Custodial History:

For custodial history see the collection level description of the Lawrence Stuckey collection.

### Scope and Content:

Great Northern Railway engine 716

Notes:	Great Northern Railway 4-8-0 class G-3 locomotives were known to have worked freight trains to Brandon.
Name Access:	Brandon, Saskatchewan & Hudson's Bay Railway Great Northern Railway
Subject Access:	railroads railways locomotives Great Northern Railway from Church's Ferry ND to Brandon MB
Repro Restriction:	The McKee Archives is the copyright holder for the Stuckey materials.
Storage Location:	Lawrence Stuckey collection

## Images

---



## Great Northern Station at Brandon

<http://archives.brandonu.ca/en/permalink/descriptions10001>

Part Of:	RG 11 Lawrence Stuckey fonds
Description Level:	Item
Series Number:	3.1
Item Number:	1-2002.3.1PE24
Accession Number:	1-2002
GMD:	graphic

Date Range: 1919  
Physical Description: 3 1/2" x 5"  
Material Details: Negative

History /

Biographical:

According to Stuckey and Bain (1996), "The Brandon, Saskatchewan & Hudson's Bay Railway was built and operated as a totally owned subsidiary of the Great Northern Railway. Construction commenced in late 1905 and by the end of 1905, less than a mile of track had been laid north of the boundary at St. John. In 1906, the remaining 68.6 miles to Brandon were laid and service commenced that year. During the Depression of the 1930s, traffic declined significantly and the entire branch was abandoned in 1936. Over much of the branch's length, the ties and rails were laid on the prairie without ballast and today little remains of the line apart from traces where there were cuts and bridges." (p. 18)

Stuckey, L. A., & Bain, D. M. (1996). The Great Northern and Northern Pacific railways in Canada. Calgary, Alberta: British Railway Modellers of North America.

Custodial History:

For custodial history see the collection level description of the Lawrence Stuckey collection.

Scope and Content:

View of the Great Northern Railway's station in Brandon, Manitoba.

Notes: [Looking southeast; Pacific Avenue was located directly north (left) of the station and tracks. P.E. 30/07/09]

Name Access: Brandon Skyline  
Brandon, Saskatchewan & Hudson's Bay Railway  
Great Northern Railway  
Great Northern Railway stations

Subject Access: railroads  
railways  
railway stations  
Great Northern Railway from Church's Ferry ND to Brandon MB

Repro Restriction: The McKee Archives is the copyright holder for the Stuckey materials.

Storage Location: Lawrence Stuckey collection

## Images

---



## Great Northern Station at Boissevain

<http://archives.brandonu.ca/en/permalink/descriptions10009>





Part Of: RG 11 Lawrence Stuckey fonds  
Creator: George H. Harris  
Description Level: Item  
Series Number: 3.1  
Item Number: 1-2002.3.1PE29  
Accession Number: 1-2002  
GMD: graphic  
Date Range: July 17, 1938  
Physical Description: 2 1/2" x 3 1/2"  
Material Details: Negative

History /

Biographical:

According to Stuckey and Bain (1996), "The Brandon, Saskatchewan & Hudson's Bay Railway was built and operated as a totally owned subsidiary of the Great Northern Railway. Construction commenced in late 1905 and by the end of 1905, less than a mile of track had been laid north of the boundary at St. John. In 1906, the remaining 68.6 miles to Brandon were laid and service commenced that year. During the Depression of the 1930s, traffic declined significantly and the entire branch was abandoned in 1936. Over much of the branch's length, the ties and rails were laid on the prairie without ballast and today little remains of the line apart from traces where there were cuts and bridges." (p. 18)

Stuckey, L. A., & Bain, D. M. (1996). The Great Northern and Northern Pacific railways in Canada. Calgary, Alberta: British Railway Modellers of North America.

Custodial History:

For custodial history see the collection level description of the Lawrence Stuckey collection.

Scope and Content:

View of the Great Northern Railway's station at Boissevain, Manitoba.

Notes: Copy negative.  
Name Access: Brandon, Saskatchewan & Hudson's Bay Railway  
Great Northern Railway  
Great Northern Railway stations  
Subject Access: railroads  
railways  
railway stations  
Great Northern Railway from Church's Ferry ND to Brandon MB  
Repro Restriction: The McKee Archives is the copyright holder for the Stuckey materials.  
Storage Location: Lawrence Stuckey collection

## Images

---





## Great Northern Railway construction

<http://archives.brandonu.ca/en/permalink/descriptions10150>

Part Of: RG 12 Brandon and Area Photograph Collection

Description Level: Item

Series Number: 3

Item Number: BAPC 3.4

GMD: graphic

Date Range: [19--]

Physical Description: 5.5" x 3.25" (b/w)

History /

Biographical:

Bunclody, MB was located near Souris, MB. The bridge in question crossed the Souris River.

Custodial History:

Photograph was donated by a "Mrs. Wilson" in 1989.

Scope and Content:

Photograph shows the Great Northern Railway bridge or trestle at Bunclody, MB in winter.

Name Access: Great Northern Railway

Bunclody, MB

Souris River

Subject Access: rail transportation

bridges

Rivers

manmade geographic features

construction of railroads

Storage Location: BAPC photograph drawer

### Images

---





## Great Northern Railway construction

<http://archives.brandonu.ca/en/permalink/descriptions10151>

Part Of: RG 12 Brandon and Area Photograph Collection

Description Level: Item

Series Number: 3

Item Number: BAPC 3.5

GMD: graphic

Date Range: [19--]

Physical Description: 5.5" x 3.25" (b/w)

History /

Biographical:

Bunclody, MB was located near Souris, MB. The bridge in question crossed the Souris River.

Custodial History:

Photograph was donated by a "Mrs. Wilson" in 1989.

Scope and Content:

Photograph shows the Great Northern Railway bridge or trestle at Bunclody, MB in spring or fall.

Name Access: Great Northern Railway

Bunclody, MB

Souris River

Subject Access: rail transportation

bridges

Rivers

manmade geographic features

Storage Location: BAPC photograph drawer

### Images

---





## Shoal Lake merchants - Marshall Wells Stores

<http://archives.brandonu.ca/en/permalink/descriptions13039>

Part Of: CKX fonds  
Creator: CKX  
Description Level: Item  
Series Number: S  
Item Number: 11-2010.S143  
Accession Number: 11-2010  
GMD: graphic  
Date Range: 196?  
Physical Description: 2.5" x 2.5" (b/w)  
Material Details: Negative

### Custodial History:

See fonds level of the CKX records for custodial history.

### Scope and Content:

Image of the Marshall Wells Stores building.

Name Access: CKX  
Marshall Wells Stores  
Subject Access: building exteriors  
store exteriors  
cars  
retail trade  
signs and signboards  
store displays

Storage Location: CKX fonds - 2010 accessions

## Images

---





## Fred McGuinness with Queen Elizabeth II

<http://archives.brandonu.ca/en/permalink/descriptions13899>

Part Of: Fred McGuinness collection  
Creator: Photographer: Towne Studios  
Description Level: Item  
Series Number: McG 9  
Item Number: 20-2009.210  
Accession Number: 20-2009  
GMD: graphic  
Date Range: 1984  
Physical Description: 3" x 4" (colour)

### Scope and Content:

Photograph shows a group of individuals posing with Queen Elizabeth II. Fred McGuinness is standing behind the Queen.

Notes: Behind the photograph is a letter dated 15 November 1984 to Fred McGuinness, Brandon, Manitoba, from Michael B. Decter, Clerk of the Executive Council, Cabinet Secretary, re: Her Majesty's Visit to Manitoba

Name Access: Fred McGuinness  
Queen Elizabeth II

Subject Access: portraits

Storage Location: McGuinness oversize storage drawer (1-2015)

### Arrangement:

From 20-2009 #4 plastic envelope #1

## Images

---

