

S. J. McKee Archives



Baldur, MB from south

<http://archives.brandonu.ca/en/permalink/descriptions14399>

Part Of: James Wall collection

Description Level: Item

Series Number: Box 2

Item Number: 12-2004.6

Accession Number: 12-2004

GMD: graphic

Date Range: 1903

Physical Description: 6.75" x 4.75" (b/w)

Material Details: On matting (9" x 7")

Physical Condition: good

Custodial History:

See collection level description for the James Douglas Wall collection.

Scope and Content:

Image of the town of Baldur, MB. Looking south a body of water is in the foreground.

Subject Access: rural images

Storage Location: 2004 accessions

Images





Baldur, Manitoba from southwest

<http://archives.brandonu.ca/en/permalink/descriptions14407>

Part Of: James Wall collection

Description Level: Item

Series Number: Box 1

Item Number: 12-2004.14

Accession Number: 12-2004

GMD: graphic

Date Range: 1903

Physical Description: 6.6" x 4.75" (b/w)

Material Details: On matting (8.75" x 7")

Physical Condition: good

Custodial History:

See collection level description for the James Douglas Wall collection.

Scope and Content:

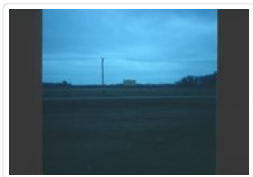
Image of Baldur, MB, including grain elevators.

Subject Access: rural images

Storage Location: 2004 accessions

Images





New Pool from #1

<http://archives.brandonu.ca/en/permalink/descriptions14617>

Part Of: John Everitt collection

Description Level: Item

Item Number: JCE-0011

GMD: graphic

Date Range: April 1984

Material Details: Kodachrome slide

History /

Biographical:

Operated as Pool A, this wooden grain elevator was built by Manitoba Pool Elevators between 1983 and 1984. It was closed by 2007 and demolished by 2008.

Custodial History:

Slide was in the possession of John Everitt before its donation to the SJ McKee Archives in 2007.

Scope and Content:

Item is an image of the new Manitoba Pool Elevator at Brandon, MB as seen from #1 highway.

Notes: History/bio

information:<http://www.mhs.mb.ca/docs/sites/brandonelevator2.shtml>

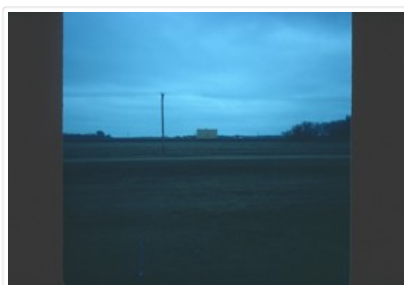
Repro Restriction:

The SJ McKee Archives is the copyright holder for the John Everitt collection and as such is providing access to the John Everitt slide collection for educational and research purposes only. To publish, copy or otherwise use these images, written permission must be obtained from the SJ McKee Archives. Any issues arising from the use of an item is the responsibility of the persons desiring to use the item, as is the securing of any necessary permissions for use.

Arrangement:

Original order. Box 1 - Section Man Pool 1

Images





Three classes from Simpson School - Baldur, MB

<http://archives.brandonu.ca/en/permalink/descriptions14426>

Part Of: James Wall collection
Description Level: Item
Series Number: Box 1
Item Number: 12-2004.33
Accession Number: 12-2004
GMD: graphic
Date Range: 1902
Physical Description: 9.5" x 7.25" (b/w)
Material Details: On matting (10.75" x 9")
Physical Condition: Some discoloration in the bottom left corner

Custodial History:

See collection level description for the James Douglas Wall collection.

Scope and Content:

Image of three classes from Simpson School. The photo was taken at the home of Alex Fowler in Baldur, MB.

Subject Access: rural images
Storage Location: 2004 accessions

Images





Front Street, west end of Baldur, MB

<http://archives.brandonu.ca/en/permalink/descriptions14405>

Part Of: James Wall collection

Description Level: Item

Series Number: Box 2

Item Number: 12-2004.12

Accession Number: 12-2004

GMD: graphic

Date Range: [1900-1904]

Physical Description: 6.6" x 4.75" (b/w)

Material Details: On matting (9" x 7")

Custodial History:

See collection level description for the James Douglas Wall collection.

Scope and Content:

Image of the west end of Front Street in Baldur, MB. Business and buildings in the photo include (L-R): Cleghorn's drug store, Fowlers, Tom Johnson's John Deer Shop, barber shop, Royal Bank (Odd Fellows Hall upstairs), Lee's Chinese Cafe, Hunters Hardware, Folwer Block, L. Curtis Block, Sexsmith Block - boarding house and sample room.

Subject Access: rural images

Storage Location: 2004 accessions

Images

