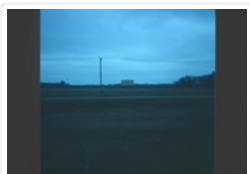


S. J. McKee Archives



New Pool from #1

<http://archives.brandonu.ca/en/permalink/descriptions14617>

Part Of: John Everitt collection

Description Level: Item

Item Number: JCE-0011

GMD: graphic

Date Range: April 1984

Material Details: Kodachrome slide

History /

Biographical:

Operated as Pool A, this wooden grain elevator was built by Manitoba Pool Elevators between 1983 and 1984. It was closed by 2007 and demolished by 2008.

Custodial History:

Slide was in the possession of John Everitt before its donation to the SJ McKee Archives in 2007.

Scope and Content:

Item is an image of the new Manitoba Pool Elevator at Brandon, MB as seen from #1 highway.

Notes: History/bio

information:<http://www.mhs.mb.ca/docs/sites/brandonelevator2.shtml>

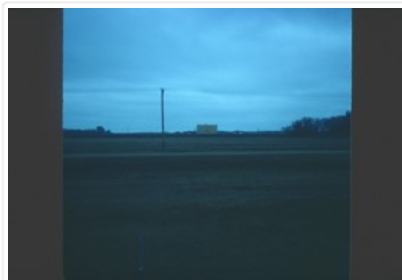
Repro Restriction:

The SJ McKee Archives is the copyright holder for the John Everitt collection and as such is providing access to the John Everitt slide collection for educational and research purposes only. To publish, copy or otherwise use these images, written permission must be obtained from the SJ McKee Archives. Any issues arising from the use of an item is the responsibility of the persons desiring to use the item, as is the securing of any necessary permissions for use.

Arrangement:

Original order. Box 1 - Section Man Pool 1

Images





Park Street School

<http://archives.brandonu.ca/en/permalink/descriptions14316>

Part Of: Brandon and Area Photograph Collection

Description Level: Item

Series Number: 2

Item Number: BAPC 2.42

GMD: graphic

Date Range: [after 1905]

Physical Description: 5.5" x 3.5" (color)

Material Details: Postcard

History /

Biographical:

Located south of Stanley Park along the 1400 block of Lorne Avenue, Park School was constructed in 1904. Designed by W.A. Elliot and built by the Brandon Construction Company the structure measured 71 x 107 feet and cost approximately \$38,000.

The school featured a principal's office, reception room, staff rooms, an assembly hall for eight hundred, and ten class rooms. The interior walls were lined with mahogany while the floors were made of western pine. The interior of the basement was constructed from Tyndall stone, while Crookston brick trimmed with Bedford stone made up the exterior.

The building was razed in September 1978. Hobbes Manor was built on the location.

Scope and Content:

Item is a postcard showing Park School in Brandon, MB.

Name Access: Park School

Subject Access: schools

Education

Storage Location: BAPC photograph drawer

Images

