

S. J. McKee Archives



Brandon Sun Building

<http://archives.brandonu.ca/en/permalink/descriptions9551>

Part Of: RG 11 Lawrence Stuckey fonds

Creator: L.A. Stuckey

Description Level: Item

Series Number: 3.1

Item Number: 1-2002.3.1EA15

Accession Number: 1-2002

GMD: graphic

Date Range: April 13, 1975

Physical Description: 2 1/2" x 2 1/2"

Material Details: Negative

History /

Biographical:

Built by the John Deere farm implement company (late 1940's?).

Custodial History:

For custodial history see the collection level description of the Lawrence Stuckey collection.

Scope and Content:

Brandon Sun Building

Name Access: Brandon Sun

Subject Access: businesses

newspaper buildings

Brandon business buildings & facilities after 1940

Repro Restriction: The McKee Archives is the copyright holder for the Stuckey materials.

Location Copy: 1-2002.3.9.38

Storage Location: Lawrence Stuckey collection

Images





Street scene 8th Street in winter

<http://archives.brandonu.ca/en/permalink/descriptions13704>

Part Of: Fred McGuinness collection

Description Level: Item

Series Number: McG 9

Item Number: 20-2009.14

Accession Number: 20-2009

GMD: graphic

Date Range: 1906

Physical Description: 4.25" x 3.25" (b/w)

Material Details: on matting

Physical Condition: Photograph has been glued to a backing board that has warped over time

History /

Biographical:

On 16 November 1906, Manitoba was hit by a severe winter storm that began that Thursday evening and extended through the weekend. The Brandon Daily Sun ("Storm Extends Over a Large Territory," 17 Nov. 1906, 1) reported that rail and telegraph services had been disrupted, country roads were impassable, and business in town was at a stand still. Following the weekend, the daily reported the blizzard was one of the greatest in recent memory. CPR trains had been caught in drifts by Carberry and an express car had caught fire and was destroyed ("Worst Storm in Many Years," Brandon Daily Sun, 19 Nov. 1906, 1).

Scope and Content:

Photograph shows street view of intersection of the 000 block of 8th Street and Rosser Avenue in the winter. Businesses on the east side of 8th Street from Pacific to Rosser Avenues are clearly visible and include: a Lunch Room (likely Aagaard's Lunch Counter), the Hotel Imperial Annex, Liverpool House (a boarding house), R.S. Thompson and Company Real Estate Office (Land Office), a barber shop (likely J. Coulter's), Frank Gowen photography studio. Fleming's Drug Store on the corner of 8th Street and Rosser Avenue has been replaced by the Bank of Hamilton. The Imperial Hotel is visible on the west side of 8th Street. The 8th Street Bridge is visible in the background. Men in winter coats and hats are crossing the street at the intersection. A horse-drawn sleigh is parked on 8th Street.

Notes: Writing on the front of the photograph matting reads: 340, after the storm November 1906. Page appears to be from a photo album. The photograph appears to be taken from the interior of a building on the southwest corner of 8th Street and Rosser Avenue.

Name Access: Fleming Block

Frank Gowen Photographer

Liverpool House

Hotel Imperial Annex

8th Street

Rosser Avenue

Aagaard's

R.S. Thompson

8th Street Bridge

Bank of Hamilton

Imperial Hotel

Subject Access: Street scene
 downtown
 storefronts
 store exteriors
 hotels
 boarding houses
 barber shops
 restaurants
 druggists
 photographers
 bridges
 banks
 winter
 Transportation
 sleighs
 storms
 land agents

Storage Location: RG 5 photograph storage drawer 2 (hanging photos)

Images



8th Street and Rosser Avenue intersection

<http://archives.brandonu.ca/en/permalink/descriptions13768>

Part Of: Fred McGuinness collection

Description Level: Item

Series Number: McG 9

Item Number: 20-2009.79

Accession Number: 20-2009

GMD: graphic

Date Range: [1906]

Physical Description: 4.25" x 3.25" (b/w)

Material Details: on matting

Physical Condition: Photograph is scratched and has been glued to a backing board that has warped over time

Scope and Content:

Photograph shows street view of the northeast intersection of the 000 block of 8th Street and Rosser Avenue. Horse and buggies are parked along the east side of 8th Street. Businesses on the east side of 8th Street from Pacific to Rosser Avenues are clearly visible and include: a Lunch Room (likely Aagaard's Lunch Counter), the Hotel Imperial Annex, Liverpool House (a boarding house), R.S. Thompson and Company Real Estate Office (Land Office), a barber shop (likely J. Coulter's), Frank Gowen photography studio, and Fleming's Drug Store. A possible street fair is in progress on Rosser Avenue. One man is standing on a soap box and is surrounded by a crowd in the middle of 8th Street. Another man can be seen standing behind a booth on the northwest street corner. Building construction appears to be happening on the west corner of 8th Street and Rosser Avenue.

Notes: Writing on the front of the photograph matting reads: 297. One photograph (20-2009.80) is glued below the photograph. Another photograph is glued on the reverse side. Page appears to be from a photo album.

Name Access: Fleming Block
Fleming's Drug Store
Frank Gowen Photographer
Liverpool House
Hotel Imperial Annex
8th Street
Rosser Avenue
Aagaard's
R.S. Thompson
8th Street Bridge

Subject Access: Street scene
Transportation
downtown
storefronts
store exteriors
hotels
boarding houses
barber shops
restaurants
druggists
photographers
bridge
horses
dogs
buggies

Storage Location: RG 5 photograph storage drawer 2 (hanging photos)

Images



8th Street and Rosser Avenue intersection

<http://archives.brandonu.ca/en/permalink/descriptions13701>

Part Of:	Fred McGuinness collection
Description Level:	Item
Series Number:	McG 9
Item Number:	20-2009.11
Accession Number:	20-2009
GMD:	graphic
Date Range:	[1906]
Physical Description:	6.5" x 4.25" (b/w)
Material Details:	on matting
Physical Condition:	Photograph is scratched and has been glued to a backing board that has warped over time

Scope and Content:

Photograph shows street view of intersection of the 000 block of 8th Street and Rosser Avenue. Horse and buggies are travelling on both roads. Businesses on the east side of 8th Street from Pacific to Rosser Avenues are clearly visible and include: a Lunch Room (likely Aagaard's Lunch Counter), the Hotel Imperial Annex, Liverpool House (a boarding house), R.S. Thompson and Company Real Estate Office (Land Office), a barber shop (likely J. Coulter's), Frank Gowen photography studio, and Fleming's Drug Store. A possible street fair is in progress on Rosser Avenue. One man is surrounded by a crowd adjacent to the Fleming Block, another man stands on a soap box in the middle of the intersection, while a third man is standing behind a booth. Building construction appears to be happening on the west corner of 7th Street and Rosser Avenue.

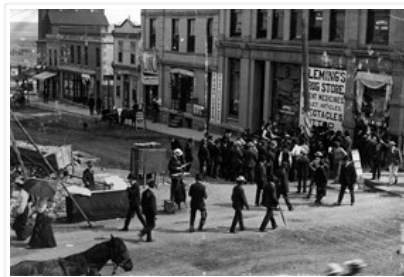
Notes:	Writing on the front of the photograph matting reads: 296. One photograph (20-2009.12) is glued above and two others are glued on the reverse side. Page appears to be from a photo album.
--------	--------------------------------------------------------------------------------------------------------------------------------------------------------------------------------------------

Name Access: Fleming Block
Fleming's Drug Store
Frank Gowen Photographer
Liverpool House
Hotel Imperial Annex
8th Street
Rosser Avenue
Aagaard's
R.S. Thompson
8th Street Bridge

Subject Access: Street scene
Transportation
downtown
storefronts
store exteriors
hotels
boarding houses
barber shops
restaurants
druggists
photographers
bridge
horses
dogs
land agents

Storage Location: RG 5 photograph storage drawer 2 (hanging photos)

Images





Brandon train station

<http://archives.brandonu.ca/en/permalink/descriptions14273>

Part Of: Joseph H. Hughes collection
Creator: Photographer: Frank Gowen
Description Level: Item
Series Number: 3-1997.1
Item Number: 3-1997.1.75
Accession Number: 3-1997
Other Numbers: Hughes #71
GMD: graphic
Date Range: [1905-1911]
Physical Description: 9.5" x 7.5" (b/w)
Material Details: on matting
Physical Condition: Photograph is stained

Scope and Content:

Photograph shows a CPR passenger trains at the old Brandon train station. Carts/trolleys appear to be loaded with wooden crates and metal milk containers. Photograph was likely taken from the 8th Street Bridge. The ramp to the 8th Street Bridge can be seen on the ride of the photograph, where residences line Assiniboine Avenue.

Name Access: Assiniboine Avenue - Early Scene
8th Street Bridge
Subject Access: residences
building exteriors
residential streets
railway stations
railroads
Storage Location: Hughes oversize drawer

Images

