

S. J. McKee Archives



Manitoba winter fair news releases

<http://archives.brandonu.ca/en/permalink/descriptions4370>

Part Of: RG 2 Provincial Exhibition of Manitoba Association fonds

Description Level: Series

Fonds Number: RG2SF2

Series Number: 2.6

GMD: textual records

Date Range: 1984-1989

Physical Description: 6.5 cm

History /

Biographical:

This series was created by the Publicity committee attached to the Board of Directors. There are no records of this committee, but it is possible to find mention of it in the prize lists and programs for the winter fair. See Appendix 2 in the printed finding aid.

Custodial History:

The records were housed at the MEA until c1986 when they were transferred to the S.J. McKee Archives at Brandon University on a continuing basis.

Scope and Content:

The series include the news releases that were sent out to various media to promote the fair.

The series includes the years 1984, 1985, 1987, and 1989.

Notes: Part of RG2SF2. Inventory of the documents in the series is available in the printed finding aid.

Storage Location: RG 2 Provincial Exhibition of Manitoba Association fonds
RG2SF2 Manitoba Winter Fair



AgEx news releases

<http://archives.brandonu.ca/en/permalink/descriptions4379>

Part Of: RG 2 Provincial Exhibition of Manitoba Association fonds

Description Level: Series

Fonds Number: RG2SF3

Series Number: 3.6

GMD: textual records

Date Range: 1984-1990

Physical Description: 13 cm

History /

Biographical:

The series was created by a committee attached to the Board of Directors of the Provincial Exhibition of Manitoba.

Custodial History:

See sous-fonds RG2SF3 for custodial history.

Scope and Content:

The series includes the news releases regarding events and competitions of AgEx from 1983 to 1990. The series was more than likely attached to a larger group of administrative files, but before they were transferred to the archives they were removed from the original files, and a new series was created.

Notes: Inventory of documents in the series is available in the printed finding aid.

Storage Location: RG 2 Provincial Exhibition of Manitoba Association fonds
RG2SF3 AgEx



Provincial exhibition of Manitoba documents

<http://archives.brandonu.ca/en/permalink/descriptions4353>

Part Of: RG 2 Provincial Exhibition of Manitoba Association fonds

Description Level: Series

Fonds Number: RG2SF1

Series Number: 1.1

GMD: textual records

Date Range: 1910-1972

Physical Description: 25 cm

History /

Biographical:

These documents were created between 1910 and 1972 by the administration of the Provincial Exhibition of Manitoba.

Custodial History:

See sous-fonds RG2SF1 for custodial history.

Scope and Content:

This series includes various contracts and agreements between the Provincial Exhibition of Manitoba and companies hired for the fair. These companies include musicians, entertainment, stage hands, concessions and more. The series also includes inventories, by laws, the 1920 Act of Incorporation. Most of the documents are from 1957 to 1962.

Notes: Inventory of documents in the series is available in the printed finding aid.

Storage Location: RG 2 Provincial Exhibition of Manitoba Association fonds
RG2SF1 Provincial Exhibition of Manitoba



Provincial exhibition of Manitoba minutes

<http://archives.brandonu.ca/en/permalink/descriptions4354>

Part Of: RG 2 Provincial Exhibition of Manitoba Association fonds

Description Level: Series

Fonds Number: RG2SF1

Series Number: 1.2

GMD: textual records

Date Range: 1903-1981

Physical Description: 1.17 m

History /

Biographical:

The minutes were created by the summer fair Board of Directors and the various committees and sub-committees associated with the Board.

There is ample evidence in the minutes of the Provincial Exhibition of Manitoba that the administrative structure was largely one by committee. By 1903, there were at least nine separate committees. These committees were Grounds and Buildings, Sports and Attractions, Public Comfort, Advertising and Printing, Privileges, Gates, Finance, Excursion and Transportation, and Prize List. Of these committees only Public Comfort, Privileges, and Excursion and Transportation were comparatively short-lived. These committees are not mentioned after 1903, 1920, and 1925, respectively. The remaining six committees all survive

in various forms to this day.

In 1908 there is mention of a Speed committee, which dealt with the racetrack at the fairgrounds. This committee was in existence until the early 1970s, when racing, along with the condemned grandstand, was discontinued. By 1915 there is mention of a Reception committee that continues on until the mid-1970s.

In the 1920 minutes several committees are mentioned. The committees included Concessions, Grandstand, Accommodation, Police/Security, and Wild Birds and Animals. The Wild Birds and Animals is not mentioned in further minutes, but Grandstand and Accommodation are mentioned into the mid 1950s. Both the Concessions and Police/Security are mentioned until the late 1970s.

In 1925, there are several new committees mentioned. They include Heavy Horse, Light Horse, Beef Cattle, Dairy Cattle, Sheep, Swine, Farm Boy's Camp, Poultry, Grains and Grasses, Horticulture, Dairy Competition, Machinery Row, Natural History, Fine Arts and School Exhibits, and Livestock Parade. The enormous expansion of committees is a reflection of the expansion of the exhibition. Almost all aspects of farming now had its own committee, and an effort to help young people continue in farming was made with the forming of camps for farm boys. All of these committees were long lived, although not necessarily with the original title. From approximately 1930 to 1940, all of the Cattle were lumped together, but by 1950 a Commercial Cattle committee was mentioned, and by 1974 there was also a Special Agriculture Display and Exotic Breeds. By 1979 there were Steer Show and Bull Sale committees. Around 1930, a Calf and Colt Competition committee was also added.

In 1930 there is mention of a Dining Room committee, but it is not mentioned again. In response to changing society, a Car Parking committee was created around 1935. This committee remained under various titles through to today. Another short-lived committee, Grandstand Gates, is mentioned from about 1935 to 1940. For some time there was also a Band Competition committee. It is mentioned from 1940 to 1945, and then not again until 1979.

In 1950 there was a Dogs committee, but no further mention is made of this committee. From 1955 to 1960 there was a separate Fire committee, until it was amalgamated with Police/Security. In 1955 two new committees are mentioned. These are the Trade Fair and Homecraft committees. While the Trade Fair is not mentioned after about 1960, the Homecraft committee seems to have been in existence until the mid 1970s.

A 4-H and Junior Activities committee was formed around 1960 to take the place of the Farm Boy's Camp. This committee continued the exhibition's attempts to keep young rural people interested in farming.

In the minutes for 1970, two more committees are mentioned. They are the Food and Beverage and the Bees and Honey committees. While one would suppose that the Food and Beverage Services committee was a new title for the Concessions committee, the Concessions committee is also mentioned. The Bees and Honey committee is mentioned until about 1974 in committee minutes.

By 1974 three more committees are mentioned in the minutes. They were the Baby Fair committee, which was a petting zoo, the Expansion, Project and Grants committee and the Midway committee. While the Midway and Baby Fair committees lasted until at least the late 1970s, the Expansion, Projects and Grants committee is not mentioned past the mid 1970s. Also mentioned in 1979 are the Pork Congress, Family Fair, Entertainment, and Exhibitor's Lounge committees.

Custodial History:

See sous-fonds RG2SF1 for custodial history.

Scope and Content:

The records consist of minutes created by the Board of Directors, Shareholders, and various committees and subcommittees of the Provincial Exhibition. It should be noted that while the minutes are extensive, they are not organized according to committee. Rather, they are organized by the year in which they were created.

Notes: Inventory of documents in the series is available in the printed finding aid.

Storage Location: RG 2 Provincial Exhibition of Manitoba Association fonds
RG2SF1 Provincial Exhibition of Manitoba



Provincial exhibition of Manitoba tickets

<http://archives.brandonu.ca/en/permalink/descriptions4360>

Part Of: RG 2 Provincial Exhibition of Manitoba Association fonds

Description Level: Series

Fonds Number: RG2SF1

Series Number: 1.8

GMD: multiple media

Date Range: 1951, 1955-1973

Physical Description: 13 cm textual records
tickets, badges, ribbons

History /

Biographical:

The records are a product of the administrative staff of the Provincial Exhibition of Manitoba.

Custodial History:

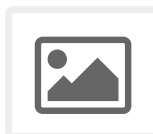
The records were housed with the PEM and the MEA until c1986 when they were transferred to the S.J. McKee Archives at Brandon University.

Scope and Content:

The series contains letters regarding complimentary tickets in 1951 and 1955. As well, the series contains examples of tickets, badges, and ribbons used or worn by guests and exhibitors to the provincial exhibitions from 1955 to 1973. There is also a pin from the 1909 Inter-Provincial Fair.

Notes: Part of RG2SF1. Inventory of documents in the series is available in the printed finding aid.

Storage Location: RG 2 Provincial Exhibition of Manitoba Association fonds
RG2SF1 Provincial Exhibition of Manitoba



Provincial exhibition of Manitoba photographs

<http://archives.brandonu.ca/en/permalink/descriptions4361>

Part Of: RG 2 Provincial Exhibition of Manitoba Association fonds

Creator:

Known creators of the records include:

PHOTOGRAPHERS AND PHOTO SERVICES

Ayers Photographs
Bob Evans
Donald Huskins
Earl Kennedy Specialized Photographic Services, Winnipeg, Manitoba
Ernie Tayler, Brandon, Manitoba
Frank Gowen, Brandon, Manitoba
H. M. Salisbury, Brandon, Manitoba
H. R. Hoffman Ltd., Brandon, Manitoba
Harold K. White
Hildebrand
Hungry I. Agency
Jerrett's Photo
Lawrence Stuckey, Brandon, Manitoba
Mid-Co.
Pugh Mfg. Co. Ltd., Toronto, Ontario
R. M. Coleman, Brandon, Manitoba
Smith K. C. Mo.
Stovel Co.
Turofsky, Toronto, Ontario
Western Engravings
Wilkinson Photography, Newmarket, Ontario

NEWSPAPERS

Brandon Sun, Brandon, Manitoba
Winnipeg Free Press, Winnipeg, Manitoba

PRINTING SERVICES

Leech Printing Ltd., Brandon, Manitoba
Crawford Drug Store, Brandon, Manitoba

GOVERNMENT

Department of Industry and Commerce, Manitoba
Frank Royal of the National Film Board

Description Level:	Series
Fonds Number:	RG2SF1
Series Number:	1.9
GMD:	graphic
Date Range:	1885-1988
Physical Description:	793 photographs and other graphic materials

History /

Biographical:

Many of these records were donated to the Board by exhibitors and participants in the fairs. Some are advertisements sent to the Provincial Exhibition Board by businesses such as Conklin Shows. Professional photographers, who were likely hired by the Board, generated others. As well, Brandon Sun photographers took a large number of the photos throughout the century. In the 1980s, the Sun photos were reprinted and then the reprints were added to the Exhibition's collection. Privately owned photos were also reprinted and added. Publishing houses generated some photographs, probably as services to participants and organizers of the fairs. Finally, the Canadian and Manitoba governments created a few of the photos.

Custodial History:

Exhibitors and participants in activities at the summer fair donated many of these records to the Provincial Exhibition Board. The Manitoba Provincial Archives in Winnipeg housed other records, of which the McKee Archives acquired copies. Most of the records were stored in the offices of the Provincial Exhibition Association of Manitoba until they were brought to the McKee Archives ca. 1986.

Scope and Content:

Series consists primarily of black and white photographs pertaining to the Provincial Exhibition. Subjects of the records vary over the century, but overall subjects included are buildings and grounds, horses, livestock, exhibits, youth activities, entertainment, and dignitaries. Almost all of the materials are in excellent condition.

BUILDINGS AND GROUNDS

The graphics that depict the buildings and grounds of the summer fair are both ground and aerial photos. From the records generated between 1900 and 1930, there are pictures of the Crystal Palace, the Wheat City Arena, the Experimental Farm, the horse barns, the racetrack, and the grandstand. The pictures dating from the forties through the sixties are of the racetrack, the grandstand, the Provincial Display Building, the Trade Fair Building, and the Main Gate. The records from the 1970s and the 1980s feature the Keystone Centre, cattle buildings, and horse stables.

HORSES

Graphics from the 1890s through the 1980s feature various light and heavy horses, from single horses to eight-horse teams. Pictures dating from the first fifty years of the fair are of stallion and purebred shows. Also depicted are racing events such as chuck wagon, bike, and single rider races. Graphics of equestrian events like jumping and hackney classes date from World War II until the 1980s. Dating from the fifties to the seventies are photos of children's events like costume classes and pony competitions. Finally, pictures of barrel racing and horse pulling competitions date from the 1970s and 1980s.

LIVESTOCK

Livestock photos, which date throughout the twentieth century, are mostly of cattle and swine, but there are a few pictures of buffalo and sheep. Cattle photos depict purebreds such as Holstein, Jersey, Hereford, and Angus. Swine pictures are of Yorkshire sows and boars, as well as of market hogs.

POULTRY AND EGGS

Graphics depicting poultry and egg shows date between 1950 and 1985.

EXHIBITS

Photos of exhibits taken throughout the century feature home craft displays such as clothes

Photos or exhibits taken throughout the century feature home-craft displays such as clothes and quilts. Tack rooms, farm implement shows, and club displays, like those of the Brandon Lion's Club, are also consistent throughout the period. Other graphics of exhibits are particular to certain years: in the late 1940s through the 1950s auto shows are featured; and from the fifties to the eighties commercial exhibits are prominent.

YOUTH ACTIVITIES

Graphics of children and teens' activities form a large part of MG 1. From the 1920s and 1930s, there are pictures of boys and teens who attended the Farm Boys' Camp. Photos taken at the Agricultural and Homemaking School in the late 1940s and early 1950s depict male teens learning about mechanics, welding, and electricity. Photos of female teens at the camp depict weaving, sewing, and cooking classes. In the records dating from 1957 to the 1980s, photos feature both pig and calf scrambles. As well, some pictures are of male teens participating in seed, poultry, and judging courses. Photos of female teens during these years show them participating in such activities as clothes-making, 4-H Queen contests, and fashion shows.

ENTERTAINMENT

Entertainment pictures include graphics of the midway, the carnival and travelling acts, parades, and miscellaneous events. Pictures of the midway are both aerial and ground photos, and date from 1913 to the 1970s. Ferris wheels and carousels are the main rides featured until the 1960s, after which many motorized rides like the Wild Mouse and the Tidal Wave are prominent.

Carnival pictures throughout the century include shots of aisles along which several attractions are set up. Photos of clowns and other costumed people are numerous. Graphics of travelling acts depict parachutists (1920s), follies (1950s), exotic dancers (1950s), trained animals (1950s-1970s), singers and bands (1970s-1980s), and trapeze artists (1970s).

Parade photos date throughout the century, and feature pipers, horses pulling carriages, people riding horses, clowns, soldiers, floats, and members of various clubs.

Miscellaneous events graphics include pictures of horseshoe throwing competitions, square dancing shows (1950s), fiddling contests (1970s), smash-up derbies (1980s), and tractor pulls (1980s).

FIRST NATIONS PEOPLE

There are seven photos of First Nations people at the summer fair. In all but one of the pictures, they are in traditional costume. Depicted are pow-wows, parades, a female teen sewing a mukluk, and tee-pees. These records date from 1914 to 1969.

DIGNITARIES

Pictures of dignitaries are of members of the Provincial Exhibition committees and boards; federal, provincial, and municipal politicians who attended the summer fair; and various business, medical, and judicial representatives. Especially notable are the group photos of the Board of Directors for the years 1894, 1900, 1941, 1949, 1951, 1952, and 1968.

The graphic materials of RG2SF1 are useful for many purposes. For one, they offer a rich visual history of the fair. Agricultural historians will find poultry, horse, livestock, horticultural, and farm implement images informative. Such images describe how farming has changed through the last century. The records offer many clues into the cultural history of Brandon and surrounding area. The nature of the carnival, for instance, changes. At the turn of the century, attractions of various booths were not advertised overtly; one had to pay before they were

given hints as to what they were going to view. By the Second World War, however, attractions' exteriors were more garish. Because the carnival was more open in its advertisements, one can determine that the boundaries between the private and public shifted in the first forty years of the twentieth century.

The pictorial history of the exhibits at the fair reveals much about the city's culture. The pictures from the post-World War II era, for example, are indicative of the period's climate of consumerism: a commercial display building was built and commercial exhibits were added to the displays of the fair. Also signified in the postwar photos is the emphasis upon family values that pervaded the fifties; for instance displays of home-crafts became prominent in these years.

Social historians will find in these records a vibrant portrait of the social composition of twentieth-century Brandon. The community's leaders, for example, are represented in the pictures of the Boards of Directors. From these photos, one can ascertain the social characteristics of Board members: white, male, and middle class. Parade photos are also indicative of social composition, as organizations from all classes of society participated in parades. Agricultural clubs, unions, women's organizations, and church groups are just a few of the entries featured in the parade pictures.

Historians of gender will find that throughout the fairs' years definitions of femininity changed. In the early fairs, women are shown in their booths at home shows, demonstrating their association with the private sphere. During the Second World War, some photos start to appear of women doing secretarial work. After World War II, however, gender norms constricted. Pictures of female teens taking classes at the Agricultural and Homemaking School depict them learning about how to run a well maintained home: they learn about sewing, cooking, and weaving. In the seventies, gender boundaries again shifted: for example, female teens began to participate in the previously male-only calf scramble events.

Finally, these records are useful for any historian of Brandon and area history. There are thousands of people from the region featured in these records. Different places and buildings in Brandon are also a prominent part of the collection. Together, the pictures of RG2SF1 offer a vivid history of both Brandon and the Provincial Exhibition.

Storage Location:	RG 2 Provincial Exhibition of Manitoba Association fonds RG2SF1 Provincial Exhibition of Manitoba
Related Material:	Pictures of the Provincial Exhibition may also be found on the National Archives of Canada website. The Western Canadian Pictorial Index in Winnipeg, Manitoba, houses additional graphic records of the summer fair.

Arrangement:

Item-level descriptions of the graphics of RG2SF1 through RG2SF4 are located on a searchable database. This database is entitled "Brandon Photographs" and can be read using Microsoft Access. "Brandon Photographs" is located on a 3½ floppy disk entitled "Provincial Exhibition Association of Manitoba fonds Series 9" included in this finding aid. The description of each photograph on this database includes the following information: accession number, title, date, place, physical description, scope and content, notes, creator, and copyright. By searching the database, individual photographs can be located easily. See the printed finding aid for instructions on how to use the photograph database.

Graphics for RG2SF1 through RG2SF4 are located in boxes. Graphics larger than 24 x 35 cm are located in the image mapcase, which is located in the reading room. The graphics are filed chronologically by accession number. The arrangement is as follows:

Provincial Exhibition of Manitoba Association fonds; RG2SF1-RG2SF4, Series 9
Boxes 1 through 15, as follows:

Box 1 EX0001 to EX0125
Box 2 EX0157 to EX0263
Box 3 EX0265 to EX0399
Box 4 EX0400 to EX0499
Box 5 EX0500 to EX0599
Box 6 EX0600 to EX0699
Box 7 EX0700 to EX0799
Box 8 EX0800 to EX0899
Box 9 EX0900 to EX0921
Box 10 EX1000 to EX1099
Box 11 EX1100 to EX1199
Box 12 EX1200 to EX1299
Box 13 EX1300 to EX1399
Box 14 EX1400 to EX1499
Box 15 EX1549 to EX1859



Provincial exhibition of Manitoba scrapbooks

<http://archives.brandonu.ca/en/permalink/descriptions4362>

Part Of: RG 2 Provincial Exhibition of Manitoba Association fonds

Description Level: Series

Fonds Number: RG2SF1

Series Number: 1.10

GMD: textual records

Date Range: 1968, 1969, 1971, 1972, 1975

Physical Description: 8 cm

History /

Biographical:

The records were created by a member of the administrative staff of the Provincial Exhibition of Manitoba.

Custodial History:

The scrapbooks were housed at the PEM and MEA until c1986 when they were transferred to the S.J. McKee Archives at Brandon University.

Scope and Content:

The scrapbooks mainly contain newspaper clippings that deal with the Provincial Exhibitions of various years. Most pictures and articles that appeared in various newspapers during this time are included in the scrapbooks.

Notes: Part of RG2SF1. Inventory of the documents in the series is available in the printed finding aid.

Storage Location: RG 2 Provincial Exhibition of Manitoba Association fonds
RG2SF1 Provincial Exhibition of Manitoba



Provincial exhibition of Manitoba miscellaneous

<http://archives.brandonu.ca/en/permalink/descriptions4363>

Part Of: RG 2 Provincial Exhibition of Manitoba Association fonds

Description Level: Series

Fonds Number: RG2SF1

Series Number: 1.11

GMD: textual records

Date Range: 1920, 1966-1980

Physical Description: 6.5 cm

History /

Biographical:

See Administrative History RG2SF1 Provincial Exhibition of Manitoba.

Custodial History:

The scrapbooks were housed at the PEM and MEA until c1986 when they were transferred to the S.J. McKee Archives at Brandon University.

Scope and Content:

The file consists of various records that in some way involve the Provincial Exhibition of Manitoba, but do not belong to a specific series. There are newspaper clippings, a cartoon, a file believed to have originated with the Schidlof family, and some letters.

Notes: Inventory of the documents in the series is available in the printed finding aid.

Storage Location: RG 2 Provincial Exhibition of Manitoba Association fonds
RG2SF1 Provincial Exhibition of Manitoba



Provincial exhibition of Manitoba financial records

<http://archives.brandonu.ca/en/permalink/descriptions4355>

Part Of: RG 2 Provincial Exhibition of Manitoba Association fonds

Description Level: Series

Fonds Number: RG2SF1

Series Number: 1.3

GMD: textual records

Date Range: 1903-1939, 1963-1969

Physical Description: 9 cm

History /

Biographical:

See Administrative History for RG2SF1 Provincial Exhibition of Manitoba.

Custodial History:

See sous-fonds RG2SF1 for custodial history.

Scope and Content:

The series consists of the financial records, transfer ledgers and prize money lists created by the Provincial Exhibition.

Notes: Inventory of documents in the series is available in the printed finding aid.

Storage Location: RG 2 Provincial Exhibition of Manitoba Association fonds
RG2SF1 Provincial Exhibition of Manitoba



Provincial exhibition of Manitoba administrative files

<http://archives.brandonu.ca/en/permalink/descriptions4356>

Part Of: RG 2 Provincial Exhibition of Manitoba Association fonds

Description Level: Series

Fonds Number: RG2SF1

Series Number: 1.4

GMD: textual records

Date Range: 1980, 1982

Physical Description: 71 cm

History /

Biographical:

See Administrative History for RG2SF1 Provincial Exhibition of Manitoba.

Custodial History:

The records were housed with the MEA until c1986 when they were transferred to the S.J. McKee Archives at Brandon University.

Scope and Content:

The series include various files from the Provincial Exhibition from 1980 and 1982. The contents include staff meetings, mailing lists, insurance, contracts, tenders, trophies and ribbons, animal events and shows, exhibits, results, etc.

Notes: Inventory of documents in the series is available in the printed finding aid.

Storage Location: RG 2 Provincial Exhibition of Manitoba Association fonds
RG2SF1 Provincial Exhibition of Manitoba



Provincial exhibition of Manitoba original results

<http://archives.brandonu.ca/en/permalink/descriptions4359>

Part Of: RG 2 Provincial Exhibition of Manitoba Association fonds

Description Level: Series

Fonds Number: RG2SF1

Series Number: 1.7

GMD: textual records

Date Range: 1935-1949, 1984, 1985

Physical Description: 13 cm

History /

Biographical:

See Administrative History RG2SF1 Provincial Exhibition of Manitoba.

Custodial History:

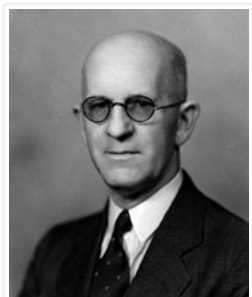
The records were housed with the PEM and the MEA until c1986 when they were transferred to the S.J. McKee Archives at Brandon University.

Scope and Content:

This series contains records from the horse races from 1935 to 1949. These ledgers contain information regarding the horse, the horse's owner, who entered the horse, who is riding or driving the horse, where the horse is from, the color, sex, gait and age of the horse, what race he is entered in, and what prize money is to be won. As well, the series contains the original results files from 1984 and 1985. These files include the results of several different events and competitions, and include information on the exhibitor and exhibit, as well as the prize money to be collected.

Notes: Inventory of documents in the series is available in the printed finding aid.

Storage Location: RG 2 Provincial Exhibition of Manitoba Association fonds
RG2SF1 Provincial Exhibition of Manitoba



President of Provincial Exhibition (?)

<http://archives.brandonu.ca/en/permalink/descriptions9857>

Part Of: RG 11 Lawrence Stuckey fonds

Description Level: Item

Series Number: 3.1

Item Number: 1-2002.3.1M30(32)

Accession Number: 1-2002

GMD: graphic

Date Range: [19-?]

Physical Description: 3 1/2" x 5"

Material Details: Negative

Custodial History:

For custodial history see the collection level description of the Lawrence Stuckey collection.

Scope and Content:

Unidentified

Notes: Mr. Stuckey originally placed 32 negatives in one envelope labeled "M – Presidents of Fair Boards 1882 – 1972"; We have separated and renumbered these negatives as M30(1) to M30(32) inclusively; Records of the Provincial Exhibition Association are held in the S.J. McKee Archives (RG2) including photos of board members.

Name Access: Presidents of Fair Boards

Subject Access: fairs

exhibitions

Provincial Exhibitions

officials

Brandon Exhibitions & Facilities

Repro Restriction: The McKee Archives is the copyright holder for the Stuckey materials.

Storage Location: Lawrence Stuckey collection

Images





Provincial exhibition of Manitoba prize lists and programs

<http://archives.brandonu.ca/en/permalink/descriptions4357>

Part Of: RG 2 Provincial Exhibition of Manitoba Association fonds

Description Level: Series

Fonds Number: RG2SF1

Series Number: 1.5

GMD: textual records

Date Range: 1910-1991

Physical Description: 62.5 cm

History /

Biographical:

The Prize Lists and Programs are products of the Prize List Committees and the Programs Committees respectively. The committees were attached to the Board of Directors. The history of the committees can be traced from 1903 to 1979 by using Appendix 1 in the printed finding aid.

Custodial History:

See sous-fonds RG2SF1 for custodial history.

Scope and Content:

The series consists of five boxes containing the prize lists and programs from the summer fairs. The prize lists and programs encompass virtually all events held at the summer fair. The programs include daily programs, as well as the programs for specific events and competitions. The competitors for each class are also listed. The prize lists include all classes and list the amount of prize money or the prize to be won in each class.

Notes: Inventory of documents in the series is available in the printed finding aid.

Storage Location: RG 2 Provincial Exhibition of Manitoba Association fonds
RG2SF1 Provincial Exhibition of Manitoba



Ed Schreyer - on Provincial Exhibition trolley

<http://archives.brandonu.ca/en/permalink/descriptions13159>

Part Of: CKX fonds
Creator: CKX
Description Level: Item
Series Number: S
Item Number: 11-2010.S84
Accession Number: 11-2010
GMD: graphic
Date Range: 1969
Physical Description: 2.5" x 2.5" (b/w)
Material Details: Negative

Custodial History:

See fonds level of the CKX records for custodial history.

Scope and Content:

Image of Ed Schreyer.

Name Access: CKX
Ed Schreyer
Subject Access: business and professional people
persons
members of the Legislative Assembly
Storage Location: CKX fonds - 2010 accessions

Images





Machine exhibit at the Inter-Provincial Fair

<http://archives.brandonu.ca/en/permalink/descriptions6483>

Part Of: Alf Fowler collection

Creator: Davidson & Gowen

Description Level: Item

Item Number: 6-1999.58

Accession Number: 6-1999

GMD: graphic

Date Range: ca. 1911

Physical Description: 9.5" x 7.5" (b/w)

Custodial History:

See fonds level description of the Alf Fowler collection for custodial history.

Scope and Content:

Photo shows part of the machine exhibit at the Inter-Provincial Fair, held on the Brandon Fair Grounds (now the Keystone Grounds) in 1912.

Storage Range: RG 5 Western Manitoba Manuscript collection - photograph storage drawer

Images





New Grandstand at Exhibition Grounds

<http://archives.brandonu.ca/en/permalink/descriptions9809>

Part Of: RG 11 Lawrence Stuckey fonds

Creator: L.A. Stuckey

Description Level: Item

Series Number: 3.1

Item Number: 1-2002.3.1M21(2)

Accession Number: 1-2002

GMD: graphic

Date Range: [ca. 1910]

Physical Description: 3 1/2" x 5"

Material Details: Negative

History /

Biographical:

Demolished in July of 1975 (Brandon Sun).

Custodial History:

For custodial history see the collection level description of the Lawrence Stuckey collection.

Scope and Content:

Second Grandstand at Exhibition grounds

Name Access: Brandon Fairgrounds

Subject Access: fairs

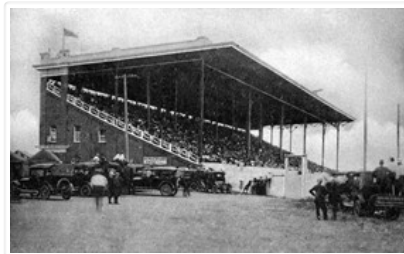
exhibitions

Brandon Exhibitions & Facilities

Repro Restriction: The McKee Archives is the copyright holder for the Stuckey materials.

Storage Location: Lawrence Stuckey collection

Images





Provincial Summer Fair

<http://archives.brandonu.ca/en/permalink/descriptions13134>

Part Of: CKX fonds
Creator: CKX
Description Level: Item
Series Number: S
Item Number: 11-2010.S94k
Accession Number: 11-2010
GMD: graphic
Date Range: 1962
Physical Description: 2.5" x 2.5" (b/w)
Material Details: Negative

Custodial History:

See fonds level of the CKX records for custodial history.

Scope and Content:

Image of a ferris wheel.

Name Access: CKX
Provincial Summer Fair
Subject Access: persons
fairs
on location
fair rides
entertainment
Storage Location: CKX fonds - 2010 accessions

Images





Provincial Summer Fair

<http://archives.brandonu.ca/en/permalink/descriptions13135>

Part Of: CKX fonds
Creator: CKX
Description Level: Item
Series Number: S
Item Number: 11-2010.S94j
Accession Number: 11-2010
GMD: graphic
Date Range: 1962
Physical Description: 2.5" x 2.5" (b/w)
Material Details: Negative

Custodial History:

See fonds level of the CKX records for custodial history.

Scope and Content:

Image of the fair grounds.

Name Access: CKX
Provincial Summer Fair
Subject Access: persons
fairs
on location
fair rides
entertainment
Storage Location: CKX fonds - 2010 accessions

Images





Provincial Summer Fair

<http://archives.brandonu.ca/en/permalink/descriptions13136>

Part Of: CKX fonds
Creator: CKX
Description Level: Item
Series Number: S
Item Number: 11-2010.S94i
Accession Number: 11-2010
GMD: graphic
Date Range: 1962
Physical Description: 2.5" x 2.5" (b/w)
Material Details: Negative

Custodial History:

See fonds level of the CKX records for custodial history.

Scope and Content:

Image of a vendor in the fair grounds.

Name Access: CKX
Provincial Summer Fair

Subject Access: persons
fairs
on location
retail trade

Storage Location: CKX fonds - 2010 accessions

Images





Provincial Summer Fair

<http://archives.brandonu.ca/en/permalink/descriptions13137>

Part Of: CKX fonds
Creator: CKX
Description Level: Item
Series Number: S
Item Number: 11-2010.S94h
Accession Number: 11-2010
GMD: graphic
Date Range: 1962
Physical Description: 2.5" x 2.5" (b/w)
Material Details: Negative

Custodial History:

See fonds level of the CKX records for custodial history.

Scope and Content:

Image of the fair grounds.

Name Access: CKX
Provincial Summer Fair

Subject Access: persons
fairs
on location
retail trade
Food

Storage Location: CKX fonds - 2010 accessions

Images

