

S. J. McKee Archives



Crepeelee site 2003 - field journals

<http://archives.brandonu.ca/en/permalink/descriptions10217>

Part Of: RG 7 Beverley Nicholson fonds

Description Level: sub sub sub series

Series Number: 1.2.1.2

Accession Number: 1-2010

GMD: multiple media

Date Range: 2003

Material Details: Field journals have been scanned in multi-page PDF files.

History /

Biographical:

The Crepeelee site was excavated in 2003 as Crepeelee 3. Standard archaeological methods were used to excavate the units. Excavation units were initially numbered as units 10, 11, 12 & 13. These numbers have been changed on the catalogue to XU 110 – 113, due to duplication in 2005. Corresponding documents have been changed to reflect the amended excavation unit numbers, however the field journals may contain the initial numbers.

Scope and Content:

Record of daily observations at the site including: excavation methods, items recovered, features, local environment and weather.

Name Access: Crepeelee site 2003 - field journals

Subject Access: Archaeology
Crepeelee locale
Crepeelee site DiMe-29
Crepeelee site 2003



Sarah site 2003 - photographs

<http://archives.brandonu.ca/en/permalink/descriptions11845>

Part Of: RG 7 Beverley Nicholson fonds

Description Level: sub sub sub series

Series Number: 1.3.1.5

Accession Number: 1-2010

GMD: graphic

Date Range: 2003

Physical Description: 9 photographs

Material Details: JPEGs

History /

Biographical:

Numerous photographs were taken during the excavation of the Sarah site 2003. A selection of photographs of features and personnel performing usual field tasks such as surveying, measuring, excavating, and taking photographs were selected for the archive.

Scope and Content:

Sub sub sub series consists of photographs taken during excavation of the Sarah site 2003.

Name Access: Sarah site 2003 - photographs

Subject Access: Archaeology
Crepeele locale
Sarah site DiMe-28
Sarah site 2003



Sarah site 2003 - artifact catalogue

<http://archives.brandonu.ca/en/permalink/descriptions11833>

Part Of: RG 7 Beverley Nicholson fonds

Description Level: sub sub sub series

Series Number: 1.3.1.4

Accession Number: 1-2010

GMD: textual records

Date Range: 2003

Physical Description: 312 pages

Material Details: PDF

History /

Biographical:

Artifact catalogue containing 1319 records from Sarah site 2003.

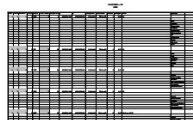
Scope and Content:

Spreadsheet containing information about the artifacts recovered, including: unit, level, artifact number, catalogue number, depth, co-ordinates, entry date, date recovered, count, weight, UTM co-ordinates, notes (excavators initials and comments) and artifact identification.

Name Access: Sarah site 2003 - artifact catalogue

Subject Access: Archaeology
Crepeele locale
Sarah site DiMe-28
Sarah site 2003

Documents



1.3.1.4_Sarah03_ArtCa
t.pdf

 Read PDF

 Download PDF



Sarah site 2003 - summary information

<http://archives.brandonu.ca/en/permalink/descriptions11720>

Part Of: RG 7 Beverley Nicholson fonds

Description Level: sub sub sub series

Series Number: 1.3.1.1

Accession Number: 1-2010

GMD: multiple media

Date Range: 2003

Material Details: Field journals have been scanned in multi-page PDF files. Artifact catalogues are PDF files in spreadsheet format. Photographs are in jpeg format.

History /

Biographical:

The Sarah site was initially chosen for excavation based on the results of the Casselman survey. The survey recovered significant amounts of faunal remains, some ceramics and lithics from the test pits. Excavations took place in 2003 at Crepeele West (Units 1-5) and Crepeele East (Units 6-9). The site was subsequently renamed the Sarah site DiMe-28.

Units 1 to 9 were excavated by supervisor James Graham and crew of Sarah Graham, Mike Evans, Todd Kristensen, Shayne Kolesar, Lisa Sonnenburg and Emily Ansell.

Scope and Content:

Sub-sub-sub series contains: Summary information of field methodology, number and co-ordinates of excavations, personnel and their staff position.

Name Access: Sarah site 2003 - summary information

Subject Access: Archaeology
Crepeele locale
Sarah site DiMe-28
Sarah site 2003

Documents

AB0101.1 Crepeele Locals

1.3 Sarah DiMe-28

1.3.1 Sarah 2003

1.3.1.1 Summary Information

Sarah Site DiMe-28

The Sarah site was originally Crepeele West (SW 1/4 - 2) and Crepeele East (NE 1/4) when recorded in 2003. The datum point of 585040N was used for the survey and also used for the excavations. A local datum of 585 was then established for the site and given the co-ordinates of 585040N.

Excavation Units: NE 1/4

Coordinates below are the archeology co-ordinates from the original and the revised datum point.

Excavation Unit	Original Coordinates	Calculated Coords	Excavator
NE 1	110200N	5850250N	Lisa Sonnenburg
NE 2	111100N	5850100N	Sarah Graham
NE 3	111200N	5850100N	James Graham
NE 4	111200N	5850100N	Todd Kristensen
NE 5	111200N	5850100N	Shayne Kolesar
NE 6	111200N	5850100N	Lisa Sonnenburg
NE 7	111200N	5850100N	Emily Ansell
NE 8	111200N	5850100N	Emily Ansell
NE 9	111200N	5850100N	Emily Ansell

1.3.1.1_
Sarah03_summary.pdf

Read PDF

Download PDF



Crepeelee site 2005 - field journals

<http://archives.brandonu.ca/en/permalink/descriptions11727>

Part Of: RG 7 Beverley Nicholson fonds
Description Level: sub sub sub series
Series Number: 1.2.3.2
Accession Number: 1-2010
GMD: multiple media
Date Range: 2005
Material Details: Field journals have been scanned in multi-page PDF files.

History /

Biographical:

In 2005 the Brandon University Field School was held at both the Crepeelee and Graham sites in the Crepeelee locale.

At the Crepeelee site nine units were excavated (XU10-16 & 20, 21). Units 20 & 21 were referred to as Meadow in the notes but are considered part of the larger site based on recoveries.

Denise Ens instructed the school and James Graham was teaching assistant. Field journals were kept by both instructors.

Scope and Content:

Record of daily observations at the site including: excavation methods, items recovered, features, local environment and weather.

Name Access: Crepeelee site 2005 - field journals
Subject Access: Archaeology
Crepeelee locale
Crepeelee site DiMe-29
Crepeelee site 2005



Crepeelee site 2007 - field journals

<http://archives.brandonu.ca/en/permalink/descriptions11774>

Part Of: RG 7 Beverley Nicholson fonds
Description Level: sub sub sub series
Series Number: 1.2.4.2
Accession Number: 1-2010
GMD: multiple media
Date Range: 2007
Material Details: Field journals have been scanned in multi-page PDF files.

History /

Biographical:

In 2007 the Brandon University Archaeology Field School was held at the Crepeelee site in the Crepeelee locale. Denise Ens instructed the school with Kate Decter & Jessica MacKenzie assistants.

Seventeen units were excavated XU30 - 46. Faunal (animal bone), lithics, fire cracked rock, diagnostic lithics and ceramics were recovered from the site. There are over 3050 records in the catalogue.

Scope and Content:

Record of daily observations at the site including: excavation methods, items recovered, features, local environment and weather.

Name Access: Crepeelee site 2007 - field journals
Subject Access: Archaeology
Crepeelee locale
Crepeelee site DiMe-29
Crepeelee site 2007



Crepeelee site 2008 - field journals

<http://archives.brandonu.ca/en/permalink/descriptions118o8>

Part Of: RG 7 Beverley Nicholson fonds
Description Level: sub sub sub series
Series Number: 1.2.5.2
Accession Number: 1-2010
GMD: multiple media
Date Range: 2007
Material Details: Field journals have been scanned in multi-page PDF files.
History /
Biographical:

The Crepeelee site was identified from the results of the Casselman survey and excavated in 2003, 2004, 2005 and 2007.

In 2008 a small crew under the direction of Bev Nicholson returned to the site to gather further samples and verify profiles. Three units (XU 50, 51 and 52) were excavated. As well the Graham site 2008 was also excavated.

The field journals contain information about both the Crepeelee and Graham sites.

Scope and Content:

Record of daily observations at the site including: excavation methods, items recovered, features, local environment and weather.

Name Access: Crepeelee site 2008 - field journals
Subject Access: Archaeology
Crepeelee locale
Crepeelee site DiMe-29
Crepeelee site 2008



Sarah site 2004 - photographs

<http://archives.brandonu.ca/en/permalink/descriptions11870>

Part Of: RG 7 Beverley Nicholson fonds

Description Level: sub sub sub series

Series Number: 1.3.2.5

Accession Number: 1-2010

GMD: graphic

Date Range: 2004

Physical Description: 7 photographs

Material Details: JPEGs

History /

Biographical:

Numerous photographs were taken during the excavation of the Sarah site 2004. A selection of photographs of features and personnel performing usual field tasks such as surveying, measuring, excavating, and taking photographs were selected for the archive.

Scope and Content:

Sub sub sub series consists of photographs taken during excavation of the Sarah site 2004.

Name Access: Sarah site 2004 - photographs

Subject Access: Archaeology
Crepeele locale
Sarah site DiMe-28
Sarah site 2004



Sarah site 2004 - summary information

<http://archives.brandonu.ca/en/permalink/descriptions11856>

Part Of: RG 7 Beverley Nicholson fonds

Description Level: sub sub sub series

Series Number: 1.3.2.1

Accession Number: 1-2010

GMD: multiple media

Date Range: 2004

Material Details: Field journals have been scanned in multi-page PDF files. Artifact catalogues are PDF files in spreadsheet format. Photographs are in jpeg format.

History /

Biographical:

The Sarah site was initially chosen for excavation based on the results of the Casselman survey. The survey recovered significant amounts of faunal remains, some ceramics and lithics from the test pits. Excavations took place in 2003 at the Sarah site DiMe-28.

In 2004 further excavation took place as part of a Brandon University Archaeology Field School. Units 10 to 18 were excavated with Denise Ens as the instructor and James Graham teaching assistant.

Scope and Content:

Sub-sub-sub series contains: Summary information of field methology, number and co-ordinates of excavations, personnel and their staff position.

Name Access: Sarah site 2004 - summary information

Subject Access: Archaeology

Crepeele locale

Sarah site DiMe-28

Sarah site 2004

Documents

1.3.2.1 Sarah 2004-28

1.3.2.1 Sarah 2004

1.3.2.1 Summary Information

In 2004 the Brandon University Field School was held at the Sarah site in the Crepeele locale. This site was excavated in 2004.

Donna Lee was the Instructor and James Graham the Teaching Assistant

The following units were excavated:

Excavation Unit	Coordinates	Excavator
SU 01	45°12'N 79°12'W	Carla Thompson
SU 02	45°12'N 79°12'W	James McLeone
SU 03	45°12'N 79°12'W	James McLeone
SU 04	45°12'N 79°12'W	James McLeone
SU 05	45°12'N 79°12'W	James McLeone
SU 06	45°12'N 79°12'W	James McLeone
SU 07	45°12'N 79°12'W	James McLeone
SU 08	45°12'N 79°12'W	James McLeone
SU 09	45°12'N 79°12'W	James McLeone
SU 10	45°12'N 79°12'W	James McLeone
SU 11	45°12'N 79°12'W	James McLeone
SU 12	45°12'N 79°12'W	James McLeone
SU 13	45°12'N 79°12'W	James McLeone
SU 14	45°12'N 79°12'W	James McLeone
SU 15	45°12'N 79°12'W	James McLeone
SU 16	45°12'N 79°12'W	James McLeone
SU 17	45°12'N 79°12'W	James McLeone
SU 18	45°12'N 79°12'W	James McLeone
SU 19	45°12'N 79°12'W	James McLeone
SU 20	45°12'N 79°12'W	James McLeone
SU 21	45°12'N 79°12'W	James McLeone
SU 22	45°12'N 79°12'W	James McLeone
SU 23	45°12'N 79°12'W	James McLeone
SU 24	45°12'N 79°12'W	James McLeone
SU 25	45°12'N 79°12'W	James McLeone
SU 26	45°12'N 79°12'W	James McLeone
SU 27	45°12'N 79°12'W	James McLeone
SU 28	45°12'N 79°12'W	James McLeone
SU 29	45°12'N 79°12'W	James McLeone
SU 30	45°12'N 79°12'W	James McLeone
SU 31	45°12'N 79°12'W	James McLeone
SU 32	45°12'N 79°12'W	James McLeone
SU 33	45°12'N 79°12'W	James McLeone
SU 34	45°12'N 79°12'W	James McLeone
SU 35	45°12'N 79°12'W	James McLeone
SU 36	45°12'N 79°12'W	James McLeone
SU 37	45°12'N 79°12'W	James McLeone
SU 38	45°12'N 79°12'W	James McLeone
SU 39	45°12'N 79°12'W	James McLeone
SU 40	45°12'N 79°12'W	James McLeone
SU 41	45°12'N 79°12'W	James McLeone
SU 42	45°12'N 79°12'W	James McLeone
SU 43	45°12'N 79°12'W	James McLeone
SU 44	45°12'N 79°12'W	James McLeone
SU 45	45°12'N 79°12'W	James McLeone
SU 46	45°12'N 79°12'W	James McLeone
SU 47	45°12'N 79°12'W	James McLeone
SU 48	45°12'N 79°12'W	James McLeone
SU 49	45°12'N 79°12'W	James McLeone
SU 50	45°12'N 79°12'W	James McLeone
SU 51	45°12'N 79°12'W	James McLeone
SU 52	45°12'N 79°12'W	James McLeone
SU 53	45°12'N 79°12'W	James McLeone
SU 54	45°12'N 79°12'W	James McLeone
SU 55	45°12'N 79°12'W	James McLeone
SU 56	45°12'N 79°12'W	James McLeone
SU 57	45°12'N 79°12'W	James McLeone
SU 58	45°12'N 79°12'W	James McLeone
SU 59	45°12'N 79°12'W	James McLeone
SU 60	45°12'N 79°12'W	James McLeone
SU 61	45°12'N 79°12'W	James McLeone
SU 62	45°12'N 79°12'W	James McLeone
SU 63	45°12'N 79°12'W	James McLeone
SU 64	45°12'N 79°12'W	James McLeone
SU 65	45°12'N 79°12'W	James McLeone
SU 66	45°12'N 79°12'W	James McLeone
SU 67	45°12'N 79°12'W	James McLeone
SU 68	45°12'N 79°12'W	James McLeone
SU 69	45°12'N 79°12'W	James McLeone
SU 70	45°12'N 79°12'W	James McLeone
SU 71	45°12'N 79°12'W	James McLeone
SU 72	45°12'N 79°12'W	James McLeone
SU 73	45°12'N 79°12'W	James McLeone
SU 74	45°12'N 79°12'W	James McLeone
SU 75	45°12'N 79°12'W	James McLeone
SU 76	45°12'N 79°12'W	James McLeone
SU 77	45°12'N 79°12'W	James McLeone
SU 78	45°12'N 79°12'W	James McLeone
SU 79	45°12'N 79°12'W	James McLeone
SU 80	45°12'N 79°12'W	James McLeone
SU 81	45°12'N 79°12'W	James McLeone
SU 82	45°12'N 79°12'W	James McLeone
SU 83	45°12'N 79°12'W	James McLeone
SU 84	45°12'N 79°12'W	James McLeone
SU 85	45°12'N 79°12'W	James McLeone
SU 86	45°12'N 79°12'W	James McLeone
SU 87	45°12'N 79°12'W	James McLeone
SU 88	45°12'N 79°12'W	James McLeone
SU 89	45°12'N 79°12'W	James McLeone
SU 90	45°12'N 79°12'W	James McLeone
SU 91	45°12'N 79°12'W	James McLeone
SU 92	45°12'N 79°12'W	James McLeone
SU 93	45°12'N 79°12'W	James McLeone
SU 94	45°12'N 79°12'W	James McLeone
SU 95	45°12'N 79°12'W	James McLeone
SU 96	45°12'N 79°12'W	James McLeone
SU 97	45°12'N 79°12'W	James McLeone
SU 98	45°12'N 79°12'W	James McLeone
SU 99	45°12'N 79°12'W	James McLeone
SU 100	45°12'N 79°12'W	James McLeone

1.3.2.1_Sarah04_Summary.pdf

Read PDF

Download PDF



Sarah site 2004 - artifact catalogue

<http://archives.brandonu.ca/en/permalink/descriptions11860>

Part Of: RG 7 Beverley Nicholson fonds

Description Level: sub sub sub series

Series Number: 1.3.2.4

Accession Number: 1-2010

GMD: textual records

Date Range: 2004

Physical Description: 3372 pages

Material Details: PDF

History /

Biographical:

Artifact catalogue containing 2910 records from Sarah site 2004.

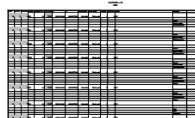
Scope and Content:

Spreadsheet containing information about the artifacts recovered, including: unit, level, artifact number, catalogue number, depth, co-ordinates, entry date, date recovered, count, weight, UTM co-ordinates, notes (excavators initials and comments) and artifact identification.

Name Access: Sarah site 2004 - artifact catalogue

Subject Access: Archaeology
Crepeele locale
Sarah site DiMe-28
Sarah site 2004

Documents



1.3.2.4_Sarah04_ArtiC
at.pdf

 Read PDF

 Download PDF



Graham site 2005 - field journals

<http://archives.brandonu.ca/en/permalink/descriptions11906>

Part Of: RG 7 Beverley Nicholson fonds
Description Level: sub sub sub series
Series Number: 1.4.2.2
Accession Number: 1-2010
GMD: multiple media
Date Range: 2005
Material Details: Field journals have been scanned in multi-page PDF files.

History /

Biographical:

The Graham site is located south of the Crepeele site. Due to the close proximity the Graham and Crepeele sites have both been the site of the Brandon University Archaeological Field School.

In 2005 both sites were excavated as part of the Field School experience instructed by Denise Ens with teaching assistant James Graham. Six units (XU 1-6) were excavated at the Graham site.

Field journals from 2005 contain notes concerning the Graham and Crepeele sites.

Scope and Content:

Record of daily observations at the site including: excavation methods, items recovered, features, local environment and weather.

Name Access: Graham site 2005 - field journals
Subject Access: Archaeology
Crepeele locale
Graham site DiMe-30
Graham site 2005



Graham site 2006 - field journals

<http://archives.brandonu.ca/en/permalink/descriptions11924>

Part Of: RG 7 Beverley Nicholson fonds
Description Level: sub sub sub series
Series Number: 1.4.3.2
Accession Number: 1-2010
GMD: multiple media
Date Range: 2006
Material Details: Field journals have been scanned in multi-page PDF files.

History /

Biographical:

In 2006 a small Brandon University Archaeology Field School was conducted at the Graham site. Four excavations (XU 7, 8 15 & 16) were completed with Denise Ens Instructor and Jessica MacKenzie Teaching Assistant.

Field journals from 2006 contain notes concerning the Graham and Crepeele sites.

Scope and Content:

Record of daily observations at the site including: excavation methods, items recovered, features, local environment and weather.

Name Access: Graham site 2006 - field journals
Subject Access: Archaeology
Crepeele locale
Graham site DiMe-30
Graham site 2006



Graham site 2008 - field journals

<http://archives.brandonu.ca/en/permalink/descriptions11959>

Part Of: RG 7 Beverley Nicholson fonds
Description Level: sub sub sub series
Series Number: 1.4.4.2
Accession Number: 1-2010
GMD: multiple media
Date Range: 2008
Material Details: Field journals have been scanned in multi-page PDF files.

History /

Biographical:

In 2008 Brandon University Archaeology returned to the Crepeele locale to conduct further testing at the Graham and Crepeele sites. Four units (XU 47-49 & 53) were excavated at Graham 2008 in order to collect samples and add further data to previous excavations. The usual excavation methodology was employed.

The small crew was directed by Bev Nicholson with Crew of Bill Foy, Andrew Lints & Kim Harrison

Recoveries included faunal (mostly bison), lithics and ceramics.

Scope and Content:

Record of daily observations at the site including: excavation methods, items recovered, features, local environment and weather.

Name Access: Graham site 2008 - field journals
Subject Access: Archaeology
Crepeele locale
Graham site DiMe-30
Graham site 2008



Graham site 2004 - field journals

<http://archives.brandonu.ca/en/permalink/descriptions11890>

Part Of: RG 7 Beverley Nicholson fonds
Description Level: sub sub sub series
Series Number: 1.4.1.2
Accession Number: 1-2010
GMD: multiple media
Date Range: 2004
Material Details: Field journals have been scanned in multi-page PDF files.

History /

Biographical:

Graham units 9 and 14 were excavated with the Crepeele site in 2004 and were reassigned to the Graham site DiMe-30 keeping the same unit numbers.

Field journals from 2004 contain notes concerning the Graham, Sarah and Atkinson sites. The relevant page numbers are noted.

Scope and Content:

Record of daily observations at the site including: excavation methods, items recovered, features, local environment and weather.

Name Access: Graham site 2004 - field journals
Subject Access: Archaeology
Crepeele locale
Graham site DiMe-30
Graham site 2004



Crepeelee site 2003 - site records

<http://archives.brandonu.ca/en/permalink/descriptions11715>

Part Of: RG 7 Beverley Nicholson fonds
Description Level: sub sub sub series
Series Number: 1.2.1.3
Accession Number: 1-2010
GMD: multiple media
Date Range: 2003
Material Details: Site records have been scanned in multi-page PDF files.

History /

Biographical:

The Crepeelee site was excavated in 2003 as Crepeelee 3. Standard archaeological methods were used to excavate the units. Site records of excavation units XU 110 – 113 are in separate pdf files.

Scope and Content:

Site records of excavation units may include: level summaries, floor plans, feature sheets, wall profiles, unit summaries and any other additional information relating to the unit.

Name Access: Crepeelee site 2003 - site records

Subject Access: Archaeology
Crepeelee locale
Crepeelee site DiMe-29
Crepeelee site 2003



Crepeelee site 2003 - photographs

<http://archives.brandonu.ca/en/permalink/descriptions11714>

Part Of: RG 7 Beverley Nicholson fonds

Description Level: sub sub sub series

Series Number: 1.2.1.5

Accession Number: 1-2010

GMD: graphic

Date Range: 2003

Physical Description: 5 photographs

Material Details: JPEGs

History /

Biographical:

Numerous photographs were taken during the excavation of the Crepeelee site 2003. A selection of photographs of personnel performing usual field tasks such as surveying, measuring, excavating, and taking photographs were selected for the archive.

Scope and Content:

Sub sub sub series consists of photographs taken during excavation of the Crepeelee site 2003.

Name Access: Crepeelee site 2003 - photographs

Subject Access: Archaeology
Crepeelee locale
Crepeelee site DiMe-29
Crepeelee site 2003



Crepeelee site 2003 - artifact catalogue

<http://archives.brandonu.ca/en/permalink/descriptions10220>

Part Of: RG 7 Beverley Nicholson fonds

Description Level: sub sub sub series

Series Number: 1.2.1.4

Accession Number: 1-2010

GMD: textual records

Date Range: 2003

Physical Description: 127 pages

Material Details: PDF

History /

Biographical:

Artifact catalogue containing 636 records from Crepeelee site 2003.

Scope and Content:

Spreadsheet containing information about the artifacts recovered, including: unit, level, artifact number, catalogue number, depth, co-ordinates, entry date, date recovered, count, weight, UTM co-ordinates, notes (excavators initials and comments) and artifact identification.

Name Access: Crepeelee site 2003 - artifact catalogue

Subject Access: Archaeology
Crepeelee locale
Crepeelee site DiMe-29
Crepeelee site 2003

Documents



1.2.1.4_C03_artcat.pdf

 Read PDF

 Download PDF



Crepeelee site 2003 - summary information

<http://archives.brandonu.ca/en/permalink/descriptions11965>

Part Of: RG 7 Beverley Nicholson fonds

Description Level: sub sub sub series

Series Number: 1.2.1.1

Accession Number: 1-2010

GMD: multiple media

Date Range: 2003

Material Details: Field journals have been scanned in multi-page PDF files. Artifact catalogues are PDF files in spreadsheet format. Photographs are in jpeg format.

History /

Biographical:

The Crepeele site was identified from the results of the Casselman survey. The site is located within the Crepeele locale approximately 400 meters to the west of the Sarah site. The units were excavated by Crew Chief James Graham and the crew from the survey.

The Crepeele site was excavated in 2003 as Crepeele 3 with the units numbered as units 10, 11, 12 & 13. These numbers have been changed on the catalogue to XU 110 – 113, due to duplication in 2005. Corresponding documents have been changed but there may be some reference to the initial numbers in the field journals.

The artifacts recovered from these four excavations are faunal (animal bone), mainly bison, lithic materials (stone tools and flakes) and some ceramic (pottery). The artifact catalogue has over 600 records.

Scope and Content:

Sub-sub-sub series contains: Summary information of field methodology, number and co-ordinates of excavations, personnel and their staff position; Field journals are daily records of recoveries, features and activities at the site; Site records include excavation level and unit summaries, feature sheets, profiles; sample records and maps; Artifact catalogues are lists and identifications of all artifacts recovered; Photographs are of excavation units, features, the landscape and personnel.

Name Access: Crepeele site 2003 - summary information

Subject Access: Archaeology
Crepeele locale
Crepeele site DiMe-29
Crepeele site 2003
Crepeele site 2003 - summary information

Documents

ARCH 1.1 Crepeele Locals

1.2.1 Crepeele Site 2003 - 20

1.2.1.1 Crepeele 2003

1.2.1.1.1 Summary Information

The Crepeele site is located within the Crepeele locale and approximately 400 meters to the west of the Sarah site. Crepeele site was excavated in 2003 as Crepeele 3. The above plot of 110m x 110m was used for the survey was above and for the excavation. A locale above of 110m was then established for the site and given the coordinates of 500000000.


Crepeele site 2003


The site was originally recorded as Units 10, 11, 12 & 13. These numbers have been changed on the catalogue to XU 110 – 113, due to duplication in 2005.

Crew Chief James Graham

Excavation Unit	Original Crew	Catalogue Crew	Excavator
XU 110	40001910	50000000	Local Crew
XU 111	40001910	50000000	Local Crew
XU 112	40001910	50000000	Local Crew
XU 113	40001910	50000000	Local Crew

1.2.1.1_
C03_summary.pdf

 Read PDF

 Download PDF



Crepeelee site 2008 - Andrew Lints field journal

<http://archives.brandonu.ca/en/permalink/descriptions11963>

Part Of:	RG 7 Beverley Nicholson fonds
Description Level:	sub sub sub series
Series Number:	1.2.5.2
File Number:	2
Accession Number:	1-2010
GMD:	multiple media
Date Range:	2008
Physical Description:	13 pages
Material Details:	Field journals have been scanned in multi-page PDF files.

History /

Biographical:

The Crepeelee site was identified from the results of the Casselman survey and excavated in 2003, 2004, 2005 and 2007.

In 2008 a small crew under the direction of Bev Nicholson returned to the site to gather further samples and verify profiles. Three units (XU 50, 51 and 52) were excavated. As well the Graham site 2008 was also excavated.

The field journals contain information about both the Crepeelee and Graham sites 2008.

Scope and Content:

Record of daily observations at the site including: excavation methods, items recovered, features, local environment and weather.

Name Access:	Crepeelee site 2008 - Andrew Lints field journal
Subject Access:	Archaeology Crepeelee locale Crepeelee site DiMe-29 Crepeelee site 2008

Documents



1.2.5.2.2_C08_ALints.p
df

 Read PDF

 Download PDF



Crepeelee site 2008 - Bev Nicholson field journal

<http://archives.brandonu.ca/en/permalink/descriptions11809>

Part Of:	RG 7 Beverley Nicholson fonds
Description Level:	sub sub sub series
Series Number:	1.2.5.2
File Number:	1
Accession Number:	1-2010
GMD:	multiple media
Date Range:	2008
Physical Description:	6 pages
Material Details:	Field journals have been scanned in multi-page PDF files.
History /	
Biographical:	

The Crepeelee site was identified from the results of the Casselman survey and excavated in 2003, 2004, 2005 and 2007.

In 2008 a small crew under the direction of Bev Nicholson returned to the site to gather further samples and verify profiles. Three units (XU 50, 51 and 52) were excavated. As well the Graham site 2008 was also excavated.

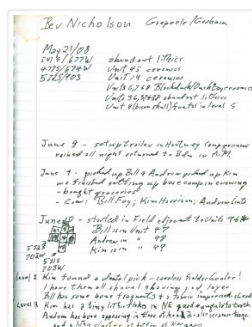
The field journals contain information about both the Crepeelee and Graham sites 2008.

Scope and Content:

Record of daily observations at the site including: excavation methods, items recovered, features, local environment and weather.

Name Access:	Crepeelee site 2008 - Bev Nicholson field journal
Subject Access:	Archaeology
	Crepeelee locale
	Crepeelee site DiMe-29
	Crepeelee site 2008

Documents



1.2.5.2.1_C08_BNicholson.pdf

Read PDF

Download PDF

