

S. J. McKee Archives



Lovstrom Block H 1988

<http://archives.brandonu.ca/en/permalink/descriptions12639>

Part Of: RG 7 Beverley Nicholson fonds
Description Level: Sub sub series
Series Number: 3.9.1
Accession Number: 1-2010
GMD: multiple media
Date Range: 1988
Material Details: Field journals have been scanned in multi-page PDF files. Artifact catalogues are PDF files in spreadsheet format. Photographs are in jpeg format.

History / Biographical:

Directed by Dr. Nicholson and with Ian Kuijt as crew chief, eight units were excavated in Block H in 1988. The vegetation is similar to other areas in the locale with an open oak forest with a light understory of saskatoon, hazelnut, poison ivy and sarsaparilla.

Radiocarbon dates from this block indicate two occupations separated in time by some 300 years. The excavation of the eight 1m² units resulted in the recovery of over 650 ceramic fragments including 20 rim sherds from at least four vessels, a grooved maul, fire-cracked rock, lithic debitage and a reworked Avonlea projectile point. A large amount of bison bone, including a number of axial elements and a fragmented skull were also recovered.

The 650 ceramics recovered are of two kinds, representing at least four vessels. Stylistically, two of these vessels appear to be from the Vickers Focus and the third vessel may be Mortlach ware. The fourth vessel appears to be Blackduck and probably comes from the lower occupation. Also encountered were what is possibly a thin ash deposit in unit 180. The presence of a large number of bison axial elements is suggestive of primary butchering activities. Several canid bones were recovered scattered among the bison bone. Although there is no visible stratigraphic evidence, the 14C dates and the different ceramic types indicate more than one occupation in this area and it is likely that several types of behavior and use of space are represented.

High numbers of ceramic fragments are often assumed to be associated with activities characteristic of habitation areas, rather than hunting or butchering behavior. The lithic material assemblage is intermediate between Blocks G and E with KRF being the most frequent material category followed by local cherts.

Scope and Content:

Sub-sub-sub series contains: Summary information of field methodology, number and co-ordinates of excavations, personnel and their staff position; Field journals are daily records of recoveries, features and activities at the site; Site records include excavation level and unit summaries, feature sheets, profiles; sample records and maps; Artifact catalogues are lists and identifications of all artifacts recovered; Photographs are of excavation units, features, the landscape and personnel.

Name Access: Lovstrom Block H 1988
Subject Access: Archaeology
Lovstrom locale
Lovstrom Block H



Lovstrom Block E 1991

<http://archives.brandonu.ca/en/permalink/descriptions12655>

Part Of: RG 7 Beverley Nicholson fonds
Description Level: Sub sub series
Series Number: 3.6.3
Accession Number: 1-2010
GMD: multiple media
Date Range: 1991
Material Details: Field journals have been scanned in multi-page PDF files. Artifact catalogues are PDF files in spreadsheet format. Photographs are in jpeg format.

History /

Biographical:

Excavations took place in block E in 1987 and 1988 with 21 units opened. Ten further units were excavated in 1991 as part of the Brandon University Archaeological Field School, directed by Dr. Nicholson with Brett Waddell as crew chief and Theresa Hill as field assistant.

In 1991 a hearth was identified in Block E as well as a cluster of spoil dirt piles believed to represent material from a pit feature identified in the 1988 excavations. The pit feature is believed to be related to the recovery of clay that may have been used to build ceramic vessels.

Stratigraphic evidence of distinct activity areas at successive depths and radiocarbon dates indicate at least three occupations (380 BP, 700 BP and 860 B P). Three identified activity clusters occur stratigraphically, supporting these dated occupations.

Large numbers of lithics were recovered, forming an assemblage dominated by SRC and KRF with lesser amounts of porcellanite and quartzite. The upper occupation contained some Tongue River Silicified Sediment (TRSS). Eight Prairie Side-Notched points were recovered as well as a lunate biface and an end scraper. Fragments from a grey soapstone tube were also recovered.

Scope and Content:

Sub-sub-sub series contains: Summary information of field methodology, number and co-ordinates of excavations, personnel and their staff position; Field journals are daily records of recoveries, features and activities at the site; Site records include excavation level and unit summaries, feature sheets, profiles; sample records and maps; Artifact catalogues are lists and identifications of all artifacts recovered; Photographs are of excavation units, features, the landscape and personnel.

Name Access: Lovstrom Block E 1991
Subject Access: Archaeology
Lovstrom locale
Lovstrom Block E



Lovstrom Block H 1991

<http://archives.brandonu.ca/en/permalink/descriptions12671>

Part Of: RG 7 Beverley Nicholson fonds
Description Level: Sub sub series
Series Number: 3.9.2
Accession Number: 1-2010
GMD: multiple media
Date Range: 1991
Material Details: Field journals have been scanned in multi-page PDF files. Artifact catalogues are PDF files in spreadsheet format. Photographs are in jpeg format.

History /

Biographical:

Based on the recoveries at the Block H in 1988, further excavations took place in 1991. Nine excavation units were opened next to the previous excavations. Another 250 ceramic sherds were recovered in 1991. Nine vessels have been identified based on rim sherds. Vickers Focus and Woodland vessels have been identified and two vessels similar to Scattered Village Complex were recovered.

The lithic material assemblage is intermediate primarily KRF followed by local cherts. Two features, a hearth and a curvilinear arrangement of rock were recovered during the 1991 excavations.

The high numbers of ceramic fragments suggests a habitation area, rather than hunting or butchering behavior. However, the separation of occupations at the site is difficult to establish and there may be different uses of the site by successive occupations.

Scope and Content:

Sub-sub-sub series contains: Summary information of field methodology, number and co-ordinates of excavations, personnel and their staff position; Field journals are daily records of recoveries, features and activities at the site; Site records include excavation level and unit summaries, feature sheets, profiles; sample records and maps; Artifact catalogues are lists and identifications of all artifacts recovered; Photographs are of excavation units, features, the landscape and personnel.

Name Access: Lovstrom Block H 1991
Subject Access: Archaeology
Lovstrom locale
Lovstrom Block H



Casselman survey - artifact catalogue

<http://archives.brandonu.ca/en/permalink/descriptions11722>

Part Of: RG 7 Beverley Nicholson fonds

Description Level: Sub sub series

Series Number: 1.1.4

Accession Number: 1-2010

GMD: textual records

Date Range: 2003

Physical Description: 264 pages

Material Details: PDF

History /

Biographical:

Artifact catalogue containing 597 records from the Casselman survey 2003.

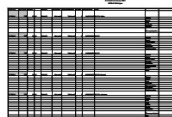
Scope and Content:

Spreadsheet containing information about the artifacts recovered, including: unit, level, artifact number, catalogue number, depth, co-ordinates, entry date, date recovered, count, weight, UTM co-ordinates, notes (excavators initials and comments) and artifact identification.

Name Access: Casselman survey - artifact catalogue

Subject Access: Archaeology
Crepeele locale
Casselman survey

Documents



1.1.4_Ca03_artcat.pdf

 Read PDF

 Download PDF



Casselman survey - summary information

<http://archives.brandonu.ca/en/permalink/descriptions11724>

Part Of: RG 7 Beverley Nicholson fonds
Description Level: Sub sub series
Series Number: 1.1.1
GMD: multiple media
Date Range: 2003
Material Details: Field journals have been scanned in multi-page PDF files. Artifact catalogues are PDF files in spreadsheet format. Photographs are in jpeg format.

History /

Biographical:

Archaeological testing began in the Crepeele locale in May 2003 with a field crew of four members. James Graham supervised the crew and was assisted by Sarah Graham, Jollana Bishop, and Lisa Sonnenburg. Later additions to the testing team were Todd Kristensen, Michael Evans, and Emily Ansell.

The methodology for this survey used an arbitrary datum and a transit to establish a grid of 30 m intervals and a shovel test every 20 m. Materials were removed and screened to a minimum depth of 50 cm below surface. All recovered materials were bagged and removed to the lab for further analysis. All information including: test pit grid co-ordinates; UTM co-ordinates for each test pit; artifact presence; excavator; vegetation; aspect; paleosol; paleosol depth; and notes, were entered into a GIS database.

Approximately 600 shovel test pits were excavated and recorded in this fashion. Of the 600 shovel test pits, over 300 contained cultural materials. Based on the results of the Casselman survey several areas were designed for further testing and excavation. Crepeele West and Crepeele East were renamed the Sarah site DiMe-28) and Crepeele 3 which became the Crepeele site DiMe- 29.

Scope and Content:

Sub-sub-sub series contains: Summary information of field methodology, number and co-ordinates of excavations, personnel and their staff position; Field journals are daily records of recoveries, features and activities at the site; Site records include excavation level and unit summaries, feature sheets, profiles; sample records and maps; Artifact catalogues are lists and identifications of all artifacts recovered; Photographs are of excavation units, features, the landscape and personnel.

Name Access: Casselman survey - summary information
Subject Access: Archaeology
Crepeele locale
Casselman survey
Casselman survey - summary information



Crepeelee site 2004

<http://archives.brandonu.ca/en/permalink/descriptions11725>

Part Of: RG 7 Beverley Nicholson fonds
Description Level: Sub sub series
Series Number: 1.2.2
Accession Number: 1-2010
GMD: multiple media
Date Range: 2004
Material Details: Field journals have been scanned in multi-page PDF files. Artifact catalogues are PDF files in spreadsheet format. Photographs are in jpeg format.

History /

Biographical:

The Crepeelee site was identified from the results of the Casselman survey and excavated in 2003. In 2004 the site was funded through the SCAPE project, directed by Bev Nicholson. The units were excavated by Crew Chief Tomasin Playford and crew.

Eight units were excavated in 2004, XU 1 to XU 8

The artifacts recovered from these eight excavations are faunal (animal bone), mainly bison, lithic materials (stone tools and flakes) and some ceramic (pottery). The artifact catalogue has 1258 records.

Scope and Content:

Sub-sub-sub series contains: Summary information of field methodology, number and co-ordinates of excavations, personnel and their staff position; Field journals are daily records of recoveries, features and activities at the site; Site records include excavation level and unit summaries, feature sheets, profiles; sample records and maps; Artifact catalogues are lists and identifications of all artifacts recovered; Photographs are of excavation units, features, the landscape and personnel.

Name Access: Crepeelee site 2004
Subject Access: Archaeology
Crepeelee locale
Crepeelee site DiMe-29
Crepeelee site 2004



Crepeelee site 2005

<http://archives.brandonu.ca/en/permalink/descriptions11748>

Part Of: RG 7 Beverley Nicholson fonds
Description Level: Sub sub series
Series Number: 1.2.3
Accession Number: 1-2010
GMD: multiple media
Date Range: 2005
Material Details: Field journals have been scanned in multi-page PDF files. Artifact catalogues are PDF files in spreadsheet format. Photographs are in jpeg format.

History /

Biographical:

The Crepeelee site was identified from the results of the Casselman survey and excavated in 2003 and 2004.

In 2005 the Brandon University Field School was held at both the Crepeelee and Graham sites in the Crepeelee locale. Denise Ens instructed the school and James Graham was teaching assistant.

At the Crepeelee site nine units were excavated (XU10-16 & 20, 21). Units 20 & 21 were referred to as Meadow in the notes but is considered part of the larger site based on recoveries. There are over 1,570 records in the catalogue. Faunal (animal bone), lithics, fire cracked rock, diagnostic lithics and ceramics were recovered from the site

The weather conditions during the field school were particularly difficult due to the rainfall and flooding of the roads and sites.

Scope and Content:

Sub-sub-sub series contains: Summary information of field methodology, number and co-ordinates of excavations, personnel and their staff position; Field journals are daily records of recoveries, features and activities at the site; Site records include excavation level and unit summaries, feature sheets, profiles; sample records and maps; Artifact catalogues are lists and identifications of all artifacts recovered; Photographs are of excavation units, features, the landscape and personnel.

Name Access: Crepeelee site 2005
Subject Access: Archaeology
Crepeelee locale
Crepeelee site DiMe-29
Crepeelee site 2005



Crepeelee site 2007

<http://archives.brandonu.ca/en/permalink/descriptions11772>

Part Of: RG 7 Beverley Nicholson fonds
Description Level: Sub sub series
Series Number: 1.2.4
Accession Number: 1-2010
GMD: multiple media
Date Range: 2007
Material Details: Field journals have been scanned in multi-page PDF files. Artifact catalogues are PDF files in spreadsheet format. Photographs are in jpeg format.

History /

Biographical:

The Crepeelee site was identified from the results of the Casselman survey and excavated in 2003, 2004 and 2005.

In 2007 the Brandon University Archaeology Field School was held at the Crepeelee site in the Crepeelee locale. Denise Ens instructed the school with Kate Decter & Jessica MacKenzie assistants.

Seventeen units were excavated XU30 - 46. Faunal (animal bone), lithics, fire cracked rock, diagnostic lithics and ceramics were recovered from the site. There are over 3050 records in the catalogue.

Scope and Content:

Sub-sub-sub series contains: Summary information of field methodology, number and co-ordinates of excavations, personnel and their staff position; Field journals are daily records of recoveries, features and activities at the site; Site records include excavation level and unit summaries, feature sheets, profiles; sample records and maps; Artifact catalogues are lists and identifications of all artifacts recovered; Photographs are of excavation units, features, the landscape and personnel.

Name Access: Crepeelee site 2007
Subject Access: Archaeology
Crepeelee locale
Crepeelee site DiMe-29
Crepeelee site 2007



Graham site 2005

<http://archives.brandonu.ca/en/permalink/descriptions11904>

Part Of: RG 7 Beverley Nicholson fonds
Description Level: Sub sub series
Series Number: 1.4.2
Accession Number: 1-2010
GMD: multiple media
Date Range: 2005
Material Details: Field journals have been scanned in multi-page PDF files. Artifact catalogues are PDF files in spreadsheet format. Photographs are in jpeg format.

History /

Biographical:

The Graham site is located south of the Crepeele site. Due to the close proximity the Graham and Crepeele sites have both been the site of the Brandon University Archaeological Field School.

In 2005 both sites were excavated as part of the Field School experience instructed by Denise Ens with teaching assistant James Graham Six units (XU 1-6) were excavated at the Graham site.

Recoveries included faunal (mostly bison), lithics (points, scrapers), and ceramics.

The Graham site was initially designated as a separate site early in the testing of the Crepeele locale due to what appeared to be a distinction between Early and Late Woodland ceramics. Subsequent testing has shown that this distinction was premature and that the cultural mosaic represented in the western section of the Crepeele locale does not readily separate in this manner.

Scope and Content:

Sub-sub-sub series contains: Summary information of field methodology, number and co-ordinates of excavations, personnel and their staff position; Field journals are daily records of recoveries, features and activities at the site; Site records include excavation level and unit summaries, feature sheets, profiles; sample records and maps; Artifact catalogues are lists and identifications of all artifacts recovered; Photographs are of excavation units, features, the landscape and personnel.

Name Access: Graham site 2005
Subject Access: Archaeology
Crepeele locale
Graham site DiMe-30
Graham site 2005



Graham site 2006

<http://archives.brandonu.ca/en/permalink/descriptions11922>

Part Of: RG 7 Beverley Nicholson fonds
Description Level: Sub sub series
Series Number: 1.4.3
Accession Number: 1-2010
GMD: multiple media
Date Range: 2006
Material Details: Field journals have been scanned in multi-page PDF files. Artifact catalogues are PDF files in spreadsheet format. Photographs are in jpeg format.

History /

Biographical:

The Graham site is located south of the Crepeele site. Due to the close proximity the Graham and Crepeele sites have both been the site of the Brandon University Archaeological Field School.

In 2006 a small Brandon University Archaeology Field School was conducted at the Graham site. Four excavations (XU 7, 8 15 & 16) were completed with Denise Ens Instructor and Jessica MacKenzie Teaching Assistant.

Recoveries included faunal (mostly bison), lithics and ceramics

The Graham site was initially designated as a separate site early in the testing of the Crepeele locale due to what appeared to be a distinction between Early and Late Woodland ceramics. Subsequent testing has shown that this distinction was premature and that the cultural mosaic represented in the western section of the Crepeele locale does not readily separate in this manner.

Scope and Content:

Sub-sub-sub series contains: Summary information of field methodology, number and co-ordinates of excavations, personnel and their staff position; Field journals are daily records of recoveries, features and activities at the site; Site records include excavation level and unit summaries, feature sheets, profiles; sample records and maps; Artifact catalogues are lists and identifications of all artifacts recovered; Photographs are of excavation units, features, the landscape and personnel.

Name Access: Graham site 2006
Subject Access: Archaeology
Crepeele locale
Graham site DiMe-30
Graham site 2006



Graham site 2008

<http://archives.brandonu.ca/en/permalink/descriptions11957>

Part Of: RG 7 Beverley Nicholson fonds
Description Level: Sub sub series
Series Number: 1.4.4
Accession Number: 1-2010
GMD: multiple media
Date Range: 2008
Material Details: Field journals have been scanned in multi-page PDF files. Artifact catalogues are PDF files in spreadsheet format. Photographs are in jpeg format.

History /

Biographical:

In 2008 Brandon University Archaeology returned to the Crepeelee locale to conduct further testing at the Graham and Crepeelee sites. Four units (XU 47-49 & 53) were excavated at Graham 2008 in order to collect samples and add further data to previous excavations. The usual excavation methodology was employed.

The small crew was directed by Bev Nicholson with Crew of Bill Foy, Andrew Lints & Kim Harrison

Recoveries included faunal (mostly bison), lithics and ceramics.

Scope and Content:

Sub-sub-sub series contains: Summary information of field methodology, number and co-ordinates of excavations, personnel and their staff position; Field journals are daily records of recoveries, features and activities at the site; Site records include excavation level and unit summaries, feature sheets, profiles; sample records and maps; Artifact catalogues are lists and identifications of all artifacts recovered; Photographs are of excavation units, features, the landscape and personnel.

Name Access: Graham site 2008
Subject Access: Archaeology
Crepeelee locale
Graham site DiMe-30
Graham site 2008



Graham site 2004

<http://archives.brandonu.ca/en/permalink/descriptions11967>

Part Of: RG 7 Beverley Nicholson fonds
Description Level: Sub sub series
Series Number: 1.4.1
Accession Number: 1-2010
GMD: multiple media
Date Range: 2004
Material Details: Field journals have been scanned in multi-page PDF files. Artifact catalogues are PDF files in spreadsheet format. Photographs are in jpeg format.

History /

Biographical:

Graham units 9 and 14 were excavated with the Crepeele site in 2004 and were reassigned to the Graham site DiMe-30 keeping the same unit numbers. Tomasin Playford was crew chief in 2004.

The Graham site was initially designated as a separate site early in the testing of the Crepeele locale due to what appeared to be a distinction between Early and Late Woodland ceramics. Subsequent testing has shown that this distinction was premature and that the cultural mosaic represented in the western section of the Crepeele locale does not readily separate in this manner.

Scope and Content:

Sub-sub-sub series contains: Summary information of field methodology, number and co-ordinates of excavations, personnel and their staff position; Field journals are daily records of recoveries, features and activities at the site; Site records include excavation level and unit summaries, feature sheets, profiles; sample records and maps; Artifact catalogues are lists and identifications of all artifacts recovered; Photographs are of excavation units, features, the landscape and personnel.

Name Access: Graham site 2004
Subject Access: Archaeology
Crepeele locale
Graham site DiMe-30
Graham site 2004



Crepeele locale Radiocarbon Report I

<http://archives.brandonu.ca/en/permalink/descriptions11968>

Part Of: RG 7 Beverley Nicholson fonds
Description Level: Sub sub series
Series Number: 1.5.1
Accession Number: 1-2010
GMD: multiple media
Date Range: 2003-2008
Physical Description: 3 pages
Material Details: Radiocarbon date reports have been scanned in multi-page PDF files.

History /

Biographical:

Crepeele locale Radiocarbon Dates. C14 report by IsoTrace Laboratory for Crepeele site 2005 XU 8.

From 2003 to 2008 field work took place at the Crepeele locale with 75 - 1m x1m units excavated.

To help establish the cultural sequence at the locale Radiocarbon dates were obtained from the three sites in the Crepeele locale.

Radiocarbon dating

The technique of radiocarbon dating was developed by Willard Libby and his colleagues at the University of Chicago in 1949.

Radiocarbon dating is used to estimate the age of organic remains from archaeological sites. Organic matter has a radioactive form of carbon (C14) that begins to decay upon death. C14 decays at a steady, known rate of a half life of 5,730 years. The technique is useful for material up to 50,000 years. Fluctuations of C14 in the atmosphere can affect results so dates are calibrated against dendrochronology. Radiocarbon dates are calibrated to calendar years.

Dates are reported in radiocarbon years or Before Present. Before Present refers to dates before 1950. The introduction of massive amounts of C14, due to atomic bomb and surface testing of atomic weapons, has widely increased the standard deviation on all dates after A.D. 1700 causing these dates to be unreliable.

Accelerated mass spectrometry can more accurately measure C14 with smaller samples and can date materials to 80,000 years.

Scope and Content:

Sub sub series contains radiocarbon dates from: Crepeele, Sarah and Graham sites.

Name Access: Crepeele locale Radiocarbon Report I

Subject Access: Archaeology
Crepeele locale
Crepeele locale Radiocarbon Dates

Documents

IsoTrace Radiocarbon Laboratory
Accelerator Mass Spectrometry Facility
at the University of Toronto

Sample ID: 2005 XU 8
Date: 2008-05-01

*Crepeele Black D suspension surrounding
extensive bison skull features*

Radiocarbon Analysis Report
Edition 20, 2008

Method: 14C/12C Ratio, Date of Sample: 2008-05-01, Sample ID: 2005 XU 8
The report is a summary of the results of the analysis of the sample. The sample was analyzed for 14C/12C ratio and the results are reported in the table below. The sample was analyzed for 14C/12C ratio and the results are reported in the table below. The sample was analyzed for 14C/12C ratio and the results are reported in the table below.

Sample	14C/12C Ratio	Age (BP)	1σ Error	2σ Error
2005 XU 8	0.0001234	1234 ± 50	1234 ± 50	1234 ± 50

The precision of the age of the sample is ±50 years. In a normal, this date may not be reliable if the sample is not properly calibrated.

[Signature]
Dr. R. S. Bradley

1.5.1_Crepeele05_RC1
4.pdf

 Read PDF

 Download PDF



Crepeele locale Radiocarbon Report II

<http://archives.brandonu.ca/en/permalink/descriptions11969>

Part Of: RG 7 Beverley Nicholson fonds

Description Level: Sub sub series

Series Number: 1.5.2

Accession Number: 1-2010

GMD: multiple media

Date Range: 2003-2008

Physical Description: 8 pages

Material Details: Radiocarbon date reports have been scanned in multi-page PDF files.

History /

Biographical:

Crepeele locale Radiocarbon Dates. C14 report by Beta Analytic Inc. for Crepeele site XU 48 and Graham site XU 54.

From 2003 to 2008 field work took place at the Crepeele locale with 75 - 1m x1m units excavated.

To help establish the cultural sequence at the locale Radiocarbon dates were obtained from the three sites in the Crepeele locale.

Radiocarbon dating

The technique of radiocarbon dating was developed by Willard Libby and his colleagues at the University of Chicago in 1949.

Radiocarbon dating is used to estimate the age of organic remains from archaeological sites. Organic matter has a radioactive form of carbon (C14) that begins to decay upon death. C14 decays at a steady, known rate of a half life of 5,730 years. The technique is useful for material up to 50,000 years. Fluctuations of C14 in the atmosphere can affect results so dates are calibrated against dendrochronology. Radiocarbon dates are calibrated to calendar years.

Dates are reported in radiocarbon years or Before Present. Before Present refers to dates before 1950. The introduction of massive amounts of C14, due to atomic bomb and surface testing of atomic weapons, has widely increased the standard deviation on all dates after A.D. 1700 causing these dates to be unreliable.

Accelerated mass spectrometry can more accurately measure C14 with smaller samples and can date materials to 80,000 years.

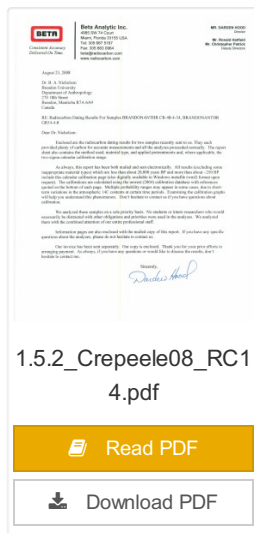
Scope and Content:

Sub sub series contains radiocarbon dates from: Crepeele, Sarah and Graham sites.

Name Access: Crepeele locale Radiocarbon Report II

Subject Access: Archaeology
Crepeele locale
Crepeele locale Radiocarbon Dates

Documents



Crepeele locale Radiocarbon Report III

<http://archives.brandonu.ca/en/permalink/descriptions11970>

Part Of: RG 7 Beverley Nicholson fonds

Description Level: Sub sub series

Series Number: 1.5.3

Accession Number: 1-2010

GMD: multiple media

Date Range: 2003-2008

Physical Description: 9 pages

Material Details: Radiocarbon date reports have been scanned in multi-page PDF files.

History /

Biographical:

Crepeele locale Radiocarbon Dates. C14 report by Beta Analytic Inc. for Crepeele site XUs 8, 30, 50.

From 2003 to 2008 field work took place at the Crepeele locale with 75 - 1m x1m units excavated.

To help establish the cultural sequence at the locale Radiocarbon dates were obtained from the three sites in the Crepeele locale.

Radiocarbon dating

The technique of radiocarbon dating was developed by Willard Libby and his colleagues at the University of Chicago in 1949.

Radiocarbon dating is used to estimate the age of organic remains from archaeological sites. Organic matter has a radioactive form of carbon (C14) that begins to decay upon death. C14 decays at a steady, known rate of a half life of 5,730 years. The technique is useful for material up to 50,000 years. Fluctuations of C14 in the atmosphere can affect results so dates are calibrated against dendrochronology. Radiocarbon dates are calibrated to calendar years.

Dates are reported in radiocarbon years or Before Present. Before Present refers to dates before 1950. The introduction of massive amounts of C14, due to atomic bomb and surface testing of atomic weapons, has widely increased the standard deviation on all dates after A.D. 1700 causing these dates to be unreliable.

Accelerated mass spectrometry can more accurately measure C14 with smaller samples and can date materials to 80,000 years.


Scope and Content:

Sub sub series contains radiocarbon dates from: Crepeele, Sarah and Graham sites.

Name Access: Crepeele locale Radiocarbon Report III

Subject Access: Archaeology
Crepeele locale
Crepeele locale Radiocarbon Dates

Documents





BETA ANALYTIC INC.
13600 W. 31st Ave., Suite 100
Westminster, CO 80040
Tel: 303.440.7400 Fax: 303.440.7401
www.betainc.com

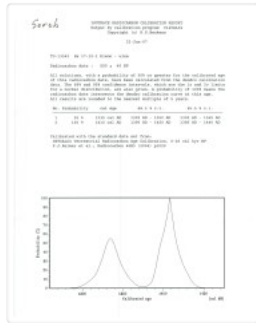
REPORT OF RADIOCARBON DATING ANALYSES
Dr. R. A. Nicholson Report No. 10112008
Boulder University Material Received: 10/11/2008

Sample ID	Material	13C (‰)	Conventional
	Batch/Location	Result	14C Age (BP)
10112008-001	10112008-001	-26.1‰	100 ± 40 BP
10112008-002	10112008-002	-26.1‰	100 ± 40 BP
10112008-003	10112008-003	-26.1‰	100 ± 40 BP
10112008-004	10112008-004	-26.1‰	100 ± 40 BP
10112008-005	10112008-005	-26.1‰	100 ± 40 BP
10112008-006	10112008-006	-26.1‰	100 ± 40 BP
10112008-007	10112008-007	-26.1‰	100 ± 40 BP
10112008-008	10112008-008	-26.1‰	100 ± 40 BP
10112008-009	10112008-009	-26.1‰	100 ± 40 BP
10112008-010	10112008-010	-26.1‰	100 ± 40 BP

1.5.3_Crepeele08_RC1
4.pdf

 Read PDF

 Download PDF



Crepeelee locale Radiocarbon Report IV

<http://archives.brandonu.ca/en/permalink/descriptions11971>

Part Of: RG 7 Beverley Nicholson fonds
 Description Level: Sub sub series
 Series Number: 1.5.4
 Accession Number: 1-2010
 GMD: multiple media
 Date Range: 2003-2008
 Physical Description: 2 pages
 Material Details: Radiocarbon date reports have been scanned in multi-page PDF files.

History /

Biographical:

Crepeelee locale Radiocarbon Dates. C14 report by IsoTrace Analytic Laboratory for Sarah site XU17.

From 2003 to 2008 field work took place at the Crepeelee locale. The Crepeelee, Graham and Sarah sites were excavated with 75 - 1m x1m units excavated

To help establish the cultural sequence at the locale Radiocarbon dates were obtained from the three sites in the Crepeelee locale.

Radiocarbon dating

The technique of radiocarbon dating was developed by Willard Libby and his colleagues at the University of Chicago in 1949.

Radiocarbon dating is used to estimate the age of organic remains from archaeological sites. Organic matter has a radioactive form of carbon (C14) that begins to decay upon death. C14 decays at a steady, known rate of a half life of 5,730 years. The technique is useful for material up to 50,000 years. Fluctuations of C14 in the atmosphere can affect results so dates are calibrated against dendrochronology. Radiocarbon dates are calibrated to calendar years.

Dates are reported in radiocarbon years or Before Present. Before Present refers to dates before 1950. The introduction of massive amounts of C14, due to atomic bomb and surface testing of atomic weapons, has widely increased the standard deviation on all dates after A.D. 1700 causing these dates to be unreliable.

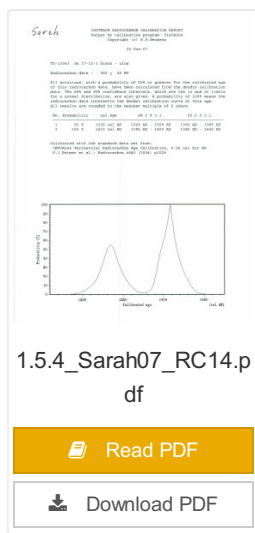
Accelerated mass spectrometry can more accurately measure C14 with smaller samples and can date materials to 80,000 years.

Scope and Content:

Sub sub series contains radiocarbon dates from: Crepeelee, Sarah and Graham sites.

Name Access: Crepeelee locale Radiocarbon Report IV
 Subject Access: Archaeology
 Crepeelee locale
 Crepeelee locale Radiocarbon Dates

Documents



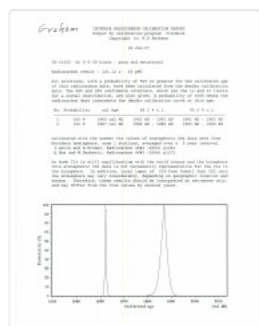
1.5.4_Sarah07_RC14.p
df



Read PDF



Download PDF



Crepeelee locale Radiocarbon Report V

<http://archives.brandonu.ca/en/permalink/descriptions11972>

Part Of: RG 7 Beverley Nicholson fonds

Description Level: Sub sub series

Series Number: 1.5.5

Accession Number: 1-2010

GMD: multiple media

Date Range: 2003-2008

Physical Description: 2 pages

Material Details: Radiocarbon date reports have been scanned in multi-page PDF files.

Biographical:

Crepeele locale Radiocarbon Dates. C14 report by IsoTrace Analytic Laboratory for Graham site XUs 5 and 8.

From 2003 to 2008 field work took place at the Crepeele locale. The Crepeele, Graham and Sarah sites were excavated with 75 - 1m x1m units excavated

To help establish the cultural sequence at the locale Radiocarbon dates were obtained from the three sites in the Crepeele locale.

Radiocarbon dating

The technique of radiocarbon dating was developed by Willard Libby and his colleagues at the University of Chicago in 1949.

Radiocarbon dating is used to estimate the age of organic remains from archaeological sites. Organic matter has a radioactive form of carbon (C14) that begins to decay upon death. C14 decays at a steady, known rate of a half life of 5,730 years. The technique is useful for material up to 50,000 years. Fluctuations of C14 in the atmosphere can affect results so dates are calibrated against dendrochronology. Radiocarbon dates are calibrated to calendar years.

Dates are reported in radiocarbon years or Before Present. Before Present refers to dates before 1950. The introduction of massive amounts of C14, due to atomic bomb and surface testing of atomic weapons, has widely increased the standard deviation on all dates after A.D. 1700 causing these dates to be unreliable.

Accelerated mass spectrometry can more accurately measure C14 with smaller samples and can date materials to 80,000 years.

Scope and Content:

Sub sub series contains radiocarbon dates from: Crepeele, Sarah and Graham sites.

Name Access: Crepeele locale Radiocarbon Report V

Subject Access: Archaeology
Crepee locale
Crepee locale Radiocarbon Dates

Documents

[illegible]



Atkinson site DiMe-27 2003

<http://archives.brandonu.ca/en/permalink/descriptions12081>

Part Of:	RG 7 Beverley Nicholson fonds
Description Level:	Sub sub series
Series Number:	2.1.1
Accession Number:	1-2010
GMD:	multiple media
Date Range:	2003
Material Details:	Field journals have been scanned in multi-page PDF files. Artifact catalogues are PDF files in spreadsheet format. Photographs are in jpeg format.

History /

Biographical:

Based on the results of the testing in 2002 and the radiocarbon date of 6,500 years before present, further excavation was warranted at the Atkinson site. In 2003 Field Chief Holly Alston and crew Shayne Kolesar and Andrea Richards opened a 42m test excavation (units 1 - 4) that included the hearth area.

The site area was covered with a huge sand dune that was slowly sliding into the river as the supporting bank eroded away. As the dune was removed a late woodland camp was found at the dune interface and a large chunk of charcoal dated this occupation to 440+/-60 B.P. cal.1440A.D. This indicated that the dune was a relatively late incursion over the site. This occupation is likely connected to subsequent testing to the east in 2005 that came to be known as Atkinson II.

Methodology:

The crew began shovel shaving the upper strata with the intention of establishing an arbitrary datum when artifacts were encountered or when a level 25cm above the hearth was reached. At 25cm above the hearth an arbitrary surface datum was established and excavation in 5cm levels began. The overbank deposited matrix was a dense, compacted silt clay and it was necessary to soak the excavated materials in buckets and then water screen the material with a high pressure pump over ¼ inch hardware cloth.

Lithic flakes were found at 10cm below datum, above the hearth level. In the next level, large bone, a broken projectile point and additional flakes were found. Increasing amounts of bone and lithic flakes were found as the excavation continued through levels 3 to 5. The top of the hearth was identified at 28cm below datum, below a 2cm layer of well-sorted sand. This sand layer was confined to a small area directly overlying the hearth. It was considered to be a deliberate quenching of the hearth.

After the conclusion of excavating level 6 the hearth was profiled and photographed. The charcoal and ash layer of the hearth was shown to be directly below the sand layer. Levels 6 and 7 revealed a bison bone bed that was consistent with primary and secondary butchering including elements from the vertebral column and appendicular skeleton. Two additional Gowen (Mummy Cave Series) projectile points were also recovered adjacent to the hearth. Level 8 continued to produce larger amounts of bone and many lithic flakes. Level 9 produced a few bone fragments and a small number of lithic flakes. At the conclusion of the excavations, the crew shoveled sand down from the dune to protect the site over winter and through any subsequent spring flooding.

Scope and Content:

Sub-sub-sub series contains: Summary information of field methodology, number and co-ordinates of excavations, personnel and their staff position; Field journals are daily records of recoveries, features and activities at the site; Site records include excavation level and unit summaries, feature sheets, profiles; sample records and maps; Artifact catalogues are lists and identifications of all artifacts recovered; Photographs are of excavation units, features, the landscape and personnel.

Name Access: Atkinson site 2003
Subject Access: Archaeology
North Lauder locale
Atkinson site DiMe-27
Atkinson site 2003



Atkinson site DiMe-27 2004

<http://archives.brandonu.ca/en/permalink/descriptions12190>

Part Of: RG 7 Beverley Nicholson fonds
Description Level: Sub sub series
Series Number: 2.1.2
Accession Number: 1-2010
GMD: multiple media
Date Range: 2004
Material Details: Field journals have been scanned in multi-page PDF files. Artifact catalogues are PDF files in spreadsheet format. Photographs are in jpeg format.

In 2004 Tomasin Playford and her crew of Andrea Richards, Sarah Graham and Shane Kolesar cleared sand cover from over the 2003 excavations and extended sand clearing back from the north edge of the 2003 units to permit implementation of four additional units. During this sand clearing a hearth was identified together with small numbers of lithics and pottery body sherds. This occupation had been noted during sand clearing in 2003 and a charcoal sample was collected and radiocarbon dated to 1440 A.D. This hearth was assigned to Atkinson II, a later occupation.

Four units (5, 6, 7, & 8) were surveyed in adjacent to the 2003 units. Excavation proceeded by means of shovel shaving until the datum pegs from the previous year were located. The new units were then given datum pegs and string boundaries and the high pressure pump was set up for water screening of silt/clay matrix.

Continued to shovel shave levels 1 - 4 and recovered small burned and unburned bone fragments. Level 5 produced a projectile point, an end scraper and a large heat-treated Swan River Chert (SRC) flake. Other SRC flakes were also recovered. Levels 6 and 7 yielded large numbers of flake debitage. The matrix in levels 5-7 contained a scatter of small, bright red ochre particles. The river began to rise on the ninth of June and the site was sandbagged on June 11th, temporarily bringing an end to excavation for Atkinson 1. Tomasin and her crew were relocated to the Crepeelee site, west of Lauder.

On July 20th, Tomasin and her crew returned to the Atkinson site and commenced cleaning up the earlier excavation following the flooding. Following the clean up, excavations were resumed on the units that had been opened. An additional Gowen point was recovered from level 8 as well as some poorly preserved bison bone. A lot flakes and small amounts of bone were recovered on west side of block and larger bone and flakes in bone bed along the east side in levels 8 - 10. Two bifaces were recovered in level 11 and a third in level 13. The excavations were terminated at level 18 when water started coming up through the unit floors.

Scope and Content:

Sub-sub-sub series contains: Summary information of field methodology, number and co-ordinates of excavations, personnel and their staff position; Field journals are daily records of recoveries, features and activities at the site; Site records include excavation level and unit summaries, feature sheets, profiles; sample records and maps; Artifact catalogues are lists and identifications of all artifacts recovered; Photographs are of excavation units, features, the landscape and personnel.

Name Access: Atkinson site 2004
Subject Access: Archaeology
North Lauder locale
Atkinson site DiMe-27
Atkinson site 2004



Atkinson II site DiMe-27 2004

<http://archives.brandonu.ca/en/permalink/descriptions12223>

Part Of: RG 7 Beverley Nicholson fonds
Description Level: Sub sub series
Series Number: 2.1.3

Accession Number: 1-2010
GMD: multiple media
Date Range: 2004
Material Details: Field journals have been scanned in multi-page PDF files. Artifact catalogues are PDF files in spreadsheet format. Photographs are in jpeg format.

History /

Biographical:

After the flooding of the Souris River in 2004 receded, Tomasin Playford and her crew of Andrea Richards, Sarah Graham and Shane Kolesar returned to the Atkinson site and commenced cleaning up the earlier excavation of Atkinson.

An area east of the Atkinson excavations was also opened for testing in 2004. This area was designated as Atkinson II. In some of the field notes it is referred to as Atkinson East. A test block was opened and fenced off from the cattle with snow fence. A 4m2 block was surveyed in (units 13 - 16) and two partial units that were truncated by the riverbank (units 11 & 12) were also placed to the south of the 4m2 block.

Three of the students who had completed the recent field school were hired as crew. Jessica McKenzie, Evie Fevez and Emily Ansell joined the crew at the Atkinson II site.

Recoveries from XU 13 - 16:

Large bison bone was recovered from units 11 and 12 and a metal tobacco box seal was recovered from unit 12. More small pieces of metal found in levels 2 and three together with small bone fragments. A bone fragment with butchering marks from a metal tool was recovered from level 6 and pottery was found in level 9. A few lithic flakes were found in level 13 and in a trench at the bottom of unit 13 above a calcite cemented layer. Recoveries from these tests were sparse and diminished as the excavation series became more distant from the river. It is likely that the remains that were recovered represent the northern edge of these occupations.

The upper occupation at Atkinson II appears to be an early historic occupation with a sparse scatter of bone and a few pieces of metal. The lower layers, below level 7 are likely precontact. Units 9 and 10 were dug as test pits and produced very little in the way of cultural materials.

Scope and Content:

Sub-sub-sub series contains: Summary information of field methodology, number and co-ordinates of excavations, personnel and their staff position; Field journals are daily records of recoveries, features and activities at the site; Site records include excavation level and unit summaries, feature sheets, profiles; sample records and maps; Artifact catalogues are lists and identifications of all artifacts recovered; Photographs are of excavation units, features, the landscape and personnel.

Name Access: Atkinson II site DiMe-27 2004

Subject Access: Archaeology
North Lauder locale
Atkinson site DiMe-27
Atkinson II site 2004