

S. J. McKee Archives



Sarah site 2004 - Jessica McKenzie and crew ...



Sarah site 2004 - Students and crew at ...



Sarah site 2004 - lab lecture



Sarah site 2004 - Bev Nicholson and students ...



Sarah site 2004 - Jessica McKenzie and students ...



Sarah site 2004 - Denise Ens checking bone ...



Sarah site 2004 - photographs



Crepeele site 2004 - Crew in camp



Sarah site 2003 - projectile point in rib



Sarah site 2003 - XU 9 vertebrae



Sarah site 2003 - bone bed in XU ...



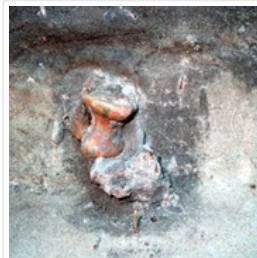
Sarah site 2003 - Excavating a mandible with ...



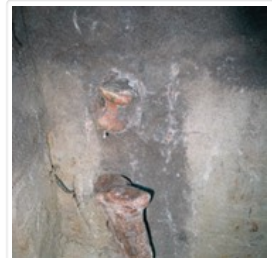
Sarah site 2003 - XU 6 - 9 ...



Sarah site 2003 - Emily Ansell excavating XU ...



Sarah site 2003 - XU 9 bone in ...



Sarah site 2003 - Excavated vertical pit in ...



Sarah site 2003 - Lisa Sonnenburg and Emily ...



Sarah site 2003 - photographs



Atkinson II site 2004 - crew celebrating the ...



Crepeele site 2003 - Sarah Graham, Todd Kristensen ...