

S. J. McKee Archives



Great Northern Station at Boissevain

<http://archives.brandonu.ca/en/permalink/descriptions10009>

Part Of: RG 11 Lawrence Stuckey fonds

Creator: George H. Harris

Description Level: Item

Series Number: 3.1

Item Number: 1-2002.3.1PE29

Accession Number: 1-2002

GMD: graphic

Date Range: July 17, 1938

Physical Description: 2 1/2" x 3 1/2"

Material Details: Negative

History /

Biographical:

According to Stuckey and Bain (1996), "The Brandon, Saskatchewan & Hudson's Bay Railway was built and operated as a totally owned subsidiary of the Great Northern Railway.

Construction commenced in late 1905 and by the end of 1905, less than a mile of track had been laid north of the boundary at St. John. In 1906, the remaining 68.6 miles to Brandon were laid and service commenced that year. During the Depression of the 1930s, traffic declined significantly and the entire branch was abandoned in 1936. Over much of the branch's length, the ties and rails were laid on the prairie without ballast and today little remains of the line apart from traces where there were cuts and bridges." (p. 18)

Stuckey, L. A., & Bain, D. M. (1996). The Great Northern and Northern Pacific railways in Canada. Calgary, Alberta: British Railway Modellers of North America.

Custodial History:

For custodial history see the collection level description of the Lawrence Stuckey collection.

Scope and Content:

View of the Great Northern Railway's station at Boissevain, Manitoba.

Notes: Copy negative.

Name Access: Brandon, Saskatchewan & Hudson's Bay Railway

Great Northern Railway

Great Northern Railway stations

Subject Access: railroads

railways

railway stations

Great Northern Railway from Church's Ferry ND to Brandon MB

Repro Restriction: The McKee Archives is the copyright holder for the Stuckey materials.

Storage Location: Lawrence Stuckey collection

Images



Great Northern wedge snowplow at Minot, ND

<http://archives.brandonu.ca/en/permalink/descriptions10004>

Part Of: RG 11 Lawrence Stuckey fonds

Creator: George H. Harris

Description Level: Item

Series Number: 3.1

Item Number: 1-2002.3.1PE27

Accession Number: 1-2002

GMD: graphic

Date Range: July 1938

Physical Description: 2" x 2 3/4"

Material Details: Negative

History /

Biographical:

According to Stuckey and Bain (1996), "The Brandon, Saskatchewan & Hudson's Bay Railway was built and operated as a totally owned subsidiary of the Great Northern Railway. Construction commenced in late 1905 and by the end of 1905, less than a mile of track had been laid north of the boundary at St. John. In 1906, the remaining 68.6 miles to Brandon were laid and service commenced that year. During the Depression of the 1930s, traffic declined significantly and the entire branch was abandoned in 1936. Over much of the branch's length, the ties and rails were laid on the prairie without ballast and today little remains of the line apart from traces where there were cuts and bridges." (p. 18)

Stuckey, L. A., & Bain, D. M. (1996). *The Great Northern and Northern Pacific railways in Canada*. Calgary, Alberta: British Railway Modellers of North America.

Custodial History:

For custodial history see the collection level description of the Lawrence Stuckey collection.

Scope and Content:

Great Northern wedge snowplow on ore gondola, Minot, ND.

Notes: From the collection of George H. Harris, Winnipeg, Manitoba.

Stuckey and Bain (1996, p. 21) note that "Built in the company shops, simply by adding a plow to an ore jenny which was filled with rocks, these vehicles were quite effective at removing snow from single tracks."

Name Access: Brandon, Saskatchewan & Hudson's Bay Railway
Great Northern Railway

Subject Access: railroads
 railways
 freight trains
 Great Northern Railway from Church's Ferry ND to Brandon MB

Repro Restriction: The McKee Archives is the copyright holder for the Stuckey materials.

Storage Location: Lawrence Stuckey collection

Images





Original Brandon City Hall

<http://archives.brandonu.ca/en/permalink/descriptions9285>

Part Of: RG 11 Lawrence Stuckey fonds

Creator: Martel

Description Level: Item

Series Number: 3.1

Item Number: 1-2002.3.1D1

Accession Number: 1-2002

GMD: graphic

Date Range: [before 1904]

Physical Description: 3 1/2" x 5"

Material Details: Negative

History /

Biographical:

Opened Feb. 15, 1892; Contained opera house on second floor; Area under canopy east side held butchers' stalls.

Custodial History:

For custodial history see the collection level description of the Lawrence Stuckey collection.

Scope and Content:

Brandon City Hall, front and east side

Notes: This and several other pix by Martel c. 1904 from a book of photos by Wm. Martel & Sons, Photographers, Brandon, printed by Warner's Book Store, Brandon. Have seen this book inscribed Feb. 1905. As no publishers or copyright date printed in it we know pix taken 1904 or earlier. L.A.S.

Name Access: Brandon City Hall

Subject Access: public buildings

city halls

Brandon Public Buildings

Repro Restriction: The McKee Archives is the copyright holder for the Stuckey materials.

Storage Location: Lawrence Stuckey collection

Images





Original Brandon City Hall

<http://archives.brandonu.ca/en/permalink/descriptions9286>

Part Of: RG 11 Lawrence Stuckey fonds

Creator: Martel

Description Level: Item

Series Number: 3.1

Item Number: 1-2002.3.1D1a

Accession Number: 1-2002

GMD: graphic

Date Range: [before 1904]

Physical Description: 3 1/2" x 5"

Material Details: Negative

History /

Biographical:

Opened Feb. 15, 1892; Contained opera house on second floor; Area under canopy east side held butchers' stalls.

Custodial History:

For custodial history see the collection level description of the Lawrence Stuckey collection.

Scope and Content:

Brandon City Hall, front and west side

Notes:

This and several other pix by Martel c. 1904 from a book of photos by Wm. Martel & Sons, Photographers, Brandon, printed by Warner's Book Store, Brandon. Have seen this book inscribed Feb. 1905. As no publishers or copyright date printed in it we know pix taken 1904 or earlier. L.A.S.

Name Access: Brandon City Hall

Subject Access: public buildings

city halls

Brandon Public Buildings

Repro Restriction: The McKee Archives is the copyright holder for the Stuckey materials.

Storage Location: Lawrence Stuckey collection

Images





Original Brandon City Hall

<http://archives.brandonu.ca/en/permalink/descriptions9287>

Part Of: RG 11 Lawrence Stuckey fonds

Creator: L.A. Stuckey

Description Level: Item

Series Number: 3.1

Item Number: 1-2002.3.1D2

Accession Number: 1-2002

GMD: graphic

Date Range: June 21, 1965

Physical Description: 2 1/2" x 2 1/2"

Material Details: Negative

Custodial History:

For custodial history see the collection level description of the Lawrence Stuckey collection.

Scope and Content:

City Hall, Brandon

Name Access: Brandon City Hall

Subject Access: public buildings

city halls

Brandon Public Buildings

Repro Restriction: The McKee Archives is the copyright holder for the Stuckey materials.

Location Copy: 1-2002.3.9.26

Storage Location: Lawrence Stuckey collection

Images





Original Brandon City Hall

<http://archives.brandonu.ca/en/permalink/descriptions9288>

Part Of: RG 11 Lawrence Stuckey fonds

Creator: D.L. Bottley

Description Level: Item

Series Number: 3.1

Item Number: 1-2002.3.1D2a

Accession Number: 1-2002

GMD: graphic

Date Range: [196-?]

Physical Description: 2 1/2" x 2 1/2"

Material Details: Negative

Custodial History:

For custodial history see the collection level description of the Lawrence Stuckey collection.

Scope and Content:

City Hall, Brandon

Notes: Including CKX studio & Prince Edward Hotel sign.

[Mr. Stuckey did not file or number this negative. We have integrated it into the collection.]

Name Access: Brandon City Hall

Prince Edward Hotel

CKX Television

Subject Access: public buildings

city halls

hotels

television stations

Brandon Public Buildings

Repro Restriction: The McKee Archives is the copyright holder for the Stuckey materials.

Storage Location: Lawrence Stuckey collection

Images





Prince Edward Hotel - Railway Station

<http://archives.brandonu.ca/en/permalink/descriptions9419>

Part Of: RG 11 Lawrence Stuckey fonds

Creator: George H. Harris

Description Level: Item

Series Number: 3.1

Item Number: 1-2002.3.1DC6f(2)

Accession Number: 1-2002

GMD: graphic

Date Range: June 1940

Physical Description: 3 1/2" x 5"

Material Details: Negative

Custodial History:

For custodial history see the collection level description of the Lawrence Stuckey collection.

Scope and Content:

[East side of Prince Edward Hotel railway station; facing Ninth Street]

Notes: [Mr. Stuckey put six negatives (3 combined negatives) in one envelope. We have separated them and numbered them DC6f(1) through DC6f(6). From a combined negative.]

Name Access: Prince Edward Hotel
Canadian Northern Railway
Canadian National Railway

Subject Access: railway stations
hotels
Brandon hotels

Repro Restriction: The McKee Archives is the copyright holder for the Stuckey materials.

Storage Location: Lawrence Stuckey collection

Images





Streetcar Bodies in Tourist Park

<http://archives.brandonu.ca/en/permalink/descriptions9732>

Part Of: RG 11 Lawrence Stuckey fonds

Creator: George H. Harris

Description Level: Item

Series Number: 3.1

Item Number: 1-2002.3.119

Accession Number: 1-2002

GMD: graphic

Date Range: 1937

Physical Description: 2 1/2" x 3 1/2"

Material Details: Negative

History /

Biographical:

Due to the increasing volume of long-distance auto traffic in the 1920's, the city designated the block between Hill & Queen's Avenues and 9th & 10th streets as a "Tourist Camp" with a few basic facilities. After the demise of the Brandon Municipal Railway, several of the old car bodies were placed in the Tourist Camp to be used as cooking & eating shelters. Some may have had sleeping accommodations. Later (ca. 1938?) several were placed in a row along the south side of Victoria Avenue, approximately 28th or 29th St, and were used as the city's first drive-in hamburger place, "The Train Drive-in". This, I believe, only lasted one or two summer seasons. LAS.

Custodial History:

For custodial history see the collection level description of the Lawrence Stuckey collection.

Scope and Content:

Streetcar Bodies in Tourist Park

Name Access: Brandon Municipal Railway

Subject Access: public transit

streetcars

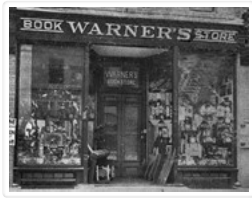
Brandon Street Railway

Repro Restriction: The McKee Archives is the copyright holder for the Stuckey materials.

Storage Location: Lawrence Stuckey collection

Images





Warner's Book Store

<http://archives.brandonu.ca/en/permalink/descriptions9489>

Part Of: RG 11 Lawrence Stuckey fonds

Creator: George H. Harris

Description Level: Item

Series Number: 3.1

Item Number: 1-2002.3.1E16

Accession Number: 1-2002

GMD: graphic

Date Range: [ca. 1904]

Physical Description: 3 1/2" x 5"

Material Details: Negative

Custodial History:

For custodial history see the collection level description of the Lawrence Stuckey collection.

Scope and Content:

Warner's Book Store

Notes: Located in Syndicate Block

Name Access: Warner's Book Store

Subject Access: businesses

bookselling

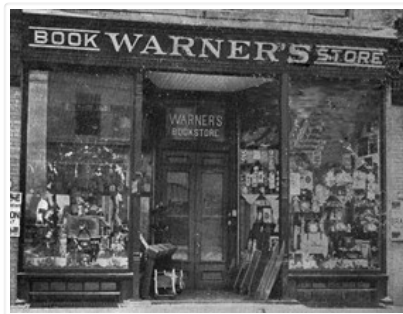
booksellers

Brandon business buildings & facilities before 1940

Repro Restriction: The McKee Archives is the copyright holder for the Stuckey materials.

Storage Location: Lawrence Stuckey collection

Images





Wheat City Arena

<http://archives.brandonu.ca/en/permalink/descriptions9306>

Part Of: RG 11 Lawrence Stuckey fonds

Creator: George H. Harris

Description Level: Item

Series Number: 3.1

Item Number: 1-2002.3.1D17

Accession Number: 1-2002

GMD: graphic

Date Range: 1938

Physical Description: 2 1/2" x 4 1/2"

Material Details: Negative

History /

Biographical:

Razed January 1970.

Custodial History:

For custodial history see the collection level description of the Lawrence Stuckey collection.

Scope and Content:

Wheat City Arena (Winter Fair Building)

Notes: Southeast corner of 11th Street & Victoria Ave.

From the collection of George H. Harris, Winnipeg, Man.

Creator provided by the Fred McGuinness collection (20-2009).

Name Access: Wheat City Arena

Royal Manitoba Winter Fair

Subject Access: Arenas

exhibitions

fairs

Brandon Public Buildings

Repro Restriction: The McKee Archives is the copyright holder for the Stuckey materials.

Storage Location: Lawrence Stuckey collection

Images

