

S. J. McKee Archives



Brandon Municipal Railway Construction

<http://archives.brandonu.ca/en/permalink/descriptions9768>

Part Of: RG 11 Lawrence Stuckey fonds

Description Level: Item

Series Number: 3.1

Item Number: 1-2002.3.1K6

Accession Number: 1-2002

GMD: graphic

Date Range: 1912

Physical Description: 3 1/2" x 5"

Material Details: Negative

Custodial History:

For custodial history see the collection level description of the Lawrence Stuckey collection.

Scope and Content:

Brandon Municipal Railway construction

Notes: Looking south at the intersection of 10th Street and Rosser Avenue.

From Brandon Sun

Name Access: Brandon Municipal Railway

Subject Access: public transit

streetcars

Brandon Street Railway

Brandon Early Construction Scenes

Repro Restriction: The McKee Archives is the copyright holder for the Stuckey materials.

Storage Location: Lawrence Stuckey collection

Images





Brandon Municipal Railway Streetcars

<http://archives.brandonu.ca/en/permalink/descriptions9722>

Part Of: RG 11 Lawrence Stuckey fonds

Description Level: Item

Series Number: 3.1

Item Number: 1-2002.3.112

Accession Number: 1-2002

GMD: graphic

Date Range: 1913

Physical Description: 3 1/2" x 5"

Material Details: Negative

History /

Biographical:

Opening of the Brandon Municipal Railway.

Custodial History:

For custodial history see the collection level description of the Lawrence Stuckey collection.

Scope and Content:

Brandon Municipal Railway streetcars on 10th Street

Notes: Note Winter Fair building (located on the 500 block of 10th Street) in background.

Name Access: Brandon Municipal Railway

Subject Access: public transit

streetcars

Brandon Street Railway

Repro Restriction: The McKee Archives is the copyright holder for the Stuckey materials.

Storage Location: Lawrence Stuckey collection

Images





Sewer Line Construction

<http://archives.brandonu.ca/en/permalink/descriptions9770>

Part Of: RG 11 Lawrence Stuckey fonds

Description Level: Item

Series Number: 3.1

Item Number: 1-2002.3.1K8

Accession Number: 1-2002

GMD: graphic

Date Range: 1912

Physical Description: 3 1/2" x 5"

Material Details: Negative

History /

Biographical:

Excavated earth was loaded into a hopper, which itself was on a rail running a half block back. It was then dumped back to fill the trench where pipe installation had already been completed - Art Baker (of Art's Confectionery, NE 15th St. & Princess Ave.). This information was provided in response to a request in the Brandon Sun (Fred McGuinness) for further information.

Custodial History:

For custodial history see the collection level description of the Lawrence Stuckey collection.

Scope and Content:

Brandon sewer line construction

Notes: View of Pacific Avenue, looking east from 5th Street
Courtesy of Mrs. E. Harden.

Name Access: Sewer Line Construction

Subject Access: public transit
streetcars

Brandon Street Railway

Brandon Early Construction Scenes

Repro Restriction: The McKee Archives is the copyright holder for the Stuckey materials.

Storage Location: Lawrence Stuckey collection

Images





Brandon Municipal Railway Map

<http://archives.brandonu.ca/en/permalink/descriptions9721>

Part Of: RG 11 Lawrence Stuckey fonds

Description Level: Item

Series Number: 3.1

Item Number: 1-2002.3.111

Accession Number: 1-2002

GMD: graphic

Date Range: [19-]

Physical Description: 3 1/2" x 5"

Material Details: Negative

Custodial History:

For custodial history see the collection level description of the Lawrence Stuckey collection.

Scope and Content:

Brandon Municipal Railway Map

Notes: From Canadian Railroad Historical Association

Name Access: Brandon Municipal Railway

Subject Access: public transit

maps

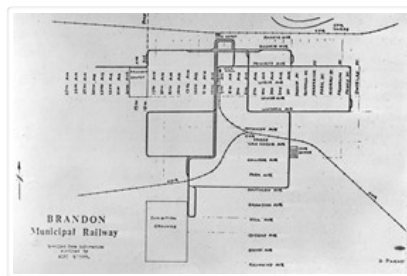
streetcars

Brandon Street Railway

Repro Restriction: The McKee Archives is the copyright holder for the Stuckey materials.

Storage Location: Lawrence Stuckey collection

Images





Brandon Streetcar Passing Winter Fair Building

<http://archives.brandonu.ca/en/permalink/descriptions9723>

Part Of: RG 11 Lawrence Stuckey fonds

Description Level: Item

Series Number: 3.1

Item Number: 1-2002.3.113

Accession Number: 1-2002

GMD: graphic

Date Range: 1913

Physical Description: 3 1/2" x 5"

Material Details: Negative

Custodial History:

For custodial history see the collection level description of the Lawrence Stuckey collection.

Scope and Content:

Brandon Municipal Railway streetcar passing the Winter Fair building (located on the 500 block of 10th Street).

Notes: JM 57.

[This negative was produced using a previously published image. P.E. 03/07/09.]

Name Access: Brandon Municipal Railway

Subject Access: public transit
streetcars

Brandon Street Railway

Repro Restriction: The McKee Archives is the copyright holder for the Stuckey materials.

Storage Location: Lawrence Stuckey collection

Images





Construction of Parkview Apartments

<http://archives.brandonu.ca/en/permalink/descriptions9772>

Part Of: RG 11 Lawrence Stuckey fonds

Creator: Wm. Martel

Description Level: Item

Series Number: 3.1

Item Number: 1-2002.3.1K10

Accession Number: 1-2002

GMD: graphic

Date Range: 1915

Physical Description: 3 1/2" x 5"

Material Details: Negative

Custodial History:

For custodial history see the collection level description of the Lawrence Stuckey collection.

Scope and Content:

Construction of Parkview Apartments

Notes: Located at 14th St. and Princess Avenue
Contractor E.C. "Ted" Higgens
Courtesy of Mrs. Millen Dunbar nee May (Higgens) Dunbar

Name Access: Parkview Apartments

Subject Access: apartment buildings
construction

Brandon Early Construction Scenes

Repro Restriction: The McKee Archives is the copyright holder for the Stuckey materials.

Storage Location: Lawrence Stuckey collection

Images





Prince Edward Hotel Construction

<http://archives.brandonu.ca/en/permalink/descriptions9765>

Part Of: RG 11 Lawrence Stuckey fonds

Description Level: Item

Series Number: 3.1

Item Number: 1-2002.3.1K3

Accession Number: 1-2002

GMD: graphic

Date Range: 1911

Physical Description: 3 1/2" x 5"

Material Details: Negative

Custodial History:

For custodial history see the collection level description of the Lawrence Stuckey collection.

Scope and Content:

View of Prince Edward Hotel under construction.

Notes: For details regarding construction negotiations between the City of Brandon and Canadian Northern Railway, see *Brandon: A City*, by G.F. Barker, page 126.

Name Access: Prince Edward Hotel

Subject Access: construction

hotels

Brandon hotels

Brandon Early Construction Scenes

Repro Restriction: The McKee Archives is the copyright holder for the Stuckey materials.

Storage Location: Lawrence Stuckey collection

Images





Streetcar on Rosser Avenue

<http://archives.brandonu.ca/en/permalink/descriptions9724>

Part Of: RG 11 Lawrence Stuckey fonds

Creator: Clark J. Smith

Description Level: Item

Series Number: 3.1

Item Number: 1-2002.3.114

Accession Number: 1-2002

GMD: graphic

Date Range: 1913

Physical Description: 3 1/2" x 5"

Material Details: Negative

History /

Biographical:

This negative provides an excellent view of Rosser Avenue (looking east from 10th Street) in the early 20th century, and shows one of the first runs for Brandon's streetcar system.

This image was used as the cover image for Lee Clark's *Brandon's Politics & Politicians*.

Custodial History:

For custodial history see the collection level description of the Lawrence Stuckey collection.

Scope and Content:

Streetcar on Rosser Avenue

Notes: Negative is a copy made from a 8" x 10" negative.

Name Access: Brandon Municipal Railway

Subject Access: public transit

streetcars

Brandon Street Railway

Repro Restriction: The McKee Archives is the copyright holder for the Stuckey materials.

Storage Location: Lawrence Stuckey collection

Images





Streetcar by Clements Drug Store

<http://archives.brandonu.ca/en/permalink/descriptions9725>

Part Of: RG 11 Lawrence Stuckey fonds

Description Level: Item

Series Number: 3.1

Item Number: 1-2002.3.115

Accession Number: 1-2002

GMD: graphic

Date Range: [191-?]

Physical Description: 3 1/2" x 5"

Material Details: Negative

Custodial History:

For custodial history see the collection level description of the Lawrence Stuckey collection.

Scope and Content:

Streetcar by Clements Drug Store

Notes: [View of Rosser Avenue looking west from 9th Street. P.E. 03/07/09.]

Name Access: Brandon Municipal Railway

Subject Access: public transit

streetcars

Brandon Street Railway

Repro Restriction: The McKee Archives is the copyright holder for the Stuckey materials.

Storage Location: Lawrence Stuckey collection

Images





Streetcar on Rosser Avenue

<http://archives.brandonu.ca/en/permalink/descriptions9726>

Part Of: RG 11 Lawrence Stuckey fonds

Description Level: Item

Series Number: 3.1

Item Number: 1-2002.3.116

Accession Number: 1-2002

GMD: graphic

Date Range: [191-?]

Physical Description: 3 1/2" x 5"

Material Details: Negative

Custodial History:

For custodial history see the collection level description of the Lawrence Stuckey collection.

Scope and Content:

Streetcar on Rosser Avenue

Notes: [View of Rosser Avenue looking west from 7th Street.

Note the Syndicate Block on left side of photo. P.E. 06/07/09.]

Name Access: Brandon Municipal Railway

Subject Access: public transit

streetcars

Brandon Street Railway

Repro Restriction: The McKee Archives is the copyright holder for the Stuckey materials.

Storage Location: Lawrence Stuckey collection

Images





Dismantling of Streetcar No. 8

<http://archives.brandonu.ca/en/permalink/descriptions9731>

Part Of: RG 11 Lawrence Stuckey fonds

Creator: George H. Harris

Description Level: Item

Series Number: 3.1

Item Number: 1-2002.3.118

Accession Number: 1-2002

GMD: graphic

Date Range: October 1937

Physical Description: 2 1/2" x 3 1/2"

Material Details: Negative

Custodial History:

For custodial history see the collection level description of the Lawrence Stuckey collection.

Scope and Content:

Dismantling of Streetcar No. 8

Notes: Photo was taken outside the car barn, located at the corner of First Street and College Avenue

Name Access: Brandon Municipal Railway

Subject Access: public transit

streetcars

Brandon Street Railway

Repro Restriction: The McKee Archives is the copyright holder for the Stuckey materials.

Storage Location: Lawrence Stuckey collection

Images





Streetcar Bodies in Tourist Park

<http://archives.brandonu.ca/en/permalink/descriptions9732>

Part Of: RG 11 Lawrence Stuckey fonds

Creator: George H. Harris

Description Level: Item

Series Number: 3.1

Item Number: 1-2002.3.119

Accession Number: 1-2002

GMD: graphic

Date Range: 1937

Physical Description: 2 1/2" x 3 1/2"

Material Details: Negative

History /

Biographical:

Due to the increasing volume of long-distance auto traffic in the 1920's, the city designated the block between Hill & Queen's Avenues and 9th & 10th streets as a "Tourist Camp" with a few basic facilities. After the demise of the Brandon Municipal Railway, several of the old car bodies were placed in the Tourist Camp to be used as cooking & eating shelters. Some may have had sleeping accommodations. Later (ca. 1938?) several were placed in a row along the south side of Victoria Avenue, approximately 28th or 29th St, and were used as the city's first drive-in hamburger place, "The Train Drive-in". This, I believe, only lasted one or two summer seasons. LAS.

Custodial History:

For custodial history see the collection level description of the Lawrence Stuckey collection.

Scope and Content:

Streetcar Bodies in Tourist Park

Name Access: Brandon Municipal Railway

Subject Access: public transit

streetcars

Brandon Street Railway

Repro Restriction: The McKee Archives is the copyright holder for the Stuckey materials.

Storage Location: Lawrence Stuckey collection

Images





Streetcar at 10th Street and Rosser Avenue

<http://archives.brandonu.ca/en/permalink/descriptions9733>

Part Of: RG 11 Lawrence Stuckey fonds

Description Level: Item

Series Number: 3.1

Item Number: 1-2002.3.1110

Accession Number: 1-2002

GMD: graphic

Date Range: [191-?]

Physical Description: 3 1/2" x 5"

Material Details: Negative

Custodial History:

For custodial history see the collection level description of the Lawrence Stuckey collection.

Scope and Content:

Streetcar at 10th Street and Rosser Avenue

Notes: Route sign (above streetcar door): 6th St. & Victoria Ave.

Note city policemen (in helmet) directing traffic.

From Daly House Museum.

Name Access: Brandon Municipal Railway

Subject Access: public transit

streetcars

Brandon Street Railway

Repro Restriction: The McKee Archives is the copyright holder for the Stuckey materials.

Storage Location: Lawrence Stuckey collection

Images





Streetcar - with Advertisements

<http://archives.brandonu.ca/en/permalink/descriptions9734>

Part Of: RG 11 Lawrence Stuckey fonds

Creator: Wm. Craig

Description Level: Item

Series Number: 3.1

Item Number: 1-2002.3.1111

Accession Number: 1-2002

GMD: graphic

Date Range: May 9, 1922

Physical Description: 2 1/2" x 3 1/2"

Material Details: Negative

Custodial History:

For custodial history see the collection level description of the Lawrence Stuckey collection.

Scope and Content:

Brandon Municipal Railway streetcar with advertisements

Notes: Route: Southern Ave.

Fender Advertisements: Allen (Theatre) Today - Will Rogers in "Doubling for Romeo"; Ben Turpin in "Step Forward"

From Mrs. D. Gerdung

Name Access: Brandon Municipal Railway

Subject Access: public transit

streetcars

Brandon Street Railway

Repro Restriction: The McKee Archives is the copyright holder for the Stuckey materials.

Storage Location: Lawrence Stuckey collection

Images





Streetcar with Advertising for Knowlton's Boot Shop

<http://archives.brandonu.ca/en/permalink/descriptions9730>

Part Of: RG 11 Lawrence Stuckey fonds

Description Level: Item

Series Number: 3.1

Item Number: 1-2002.3.117

Accession Number: 1-2002

GMD: graphic

Date Range: 1921

Physical Description: 2 1/2" x 3 1/2"

Material Details: Negative

Custodial History:

For custodial history see the collection level description of the Lawrence Stuckey collection.

Scope and Content:

Streetcar on Rosser Avenue

Notes: Note the sign advertising a Spring sale of shoes at Knowlton's Boot Shop

Name Access: Brandon Municipal Railway

Knowlton's Shoe Store

Subject Access: public transit

streetcars

shoe stores

Brandon Street Railway

Repro Restriction: The McKee Archives is the copyright holder for the Stuckey materials.

Storage Location: Lawrence Stuckey collection

Images





Methodist Church Under Construction

<http://archives.brandonu.ca/en/permalink/descriptions9763>

Part Of: RG 11 Lawrence Stuckey fonds

Description Level: Item

Series Number: 3.1

Item Number: 1-2002.3.1K1

Accession Number: 1-2002

GMD: graphic

Date Range: [ca. 1905]

Physical Description: 3 1/2" x 5"

Material Details: Negative

Custodial History:

For custodial history see the collection level description of the Lawrence Stuckey collection.

Scope and Content:

Methodist Church under construction

Notes: Laying cornerstone
From the Brandon Sun.

Name Access: Methodist Church

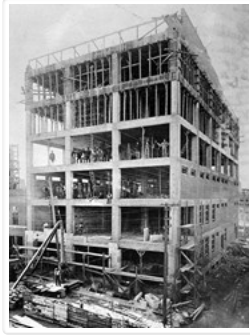
Subject Access: Christianity
Church buildings
Brandon Churches
Brandon Early Construction Scenes

Repro Restriction: The McKee Archives is the copyright holder for the Stuckey materials.

Storage Location: Lawrence Stuckey collection

Images





A.E. McKenzie Building Under Construction

<http://archives.brandonu.ca/en/permalink/descriptions9764>

Part Of: RG 11 Lawrence Stuckey fonds

Description Level: Item

Series Number: 3.1

Item Number: 1-2002.3.1K2

Accession Number: 1-2002

GMD: graphic

Date Range: [1909 or 1910]

Physical Description: 3 1/2" x 5"

Material Details: Negative

Custodial History:

For custodial history see the collection level description of the Lawrence Stuckey collection.

Scope and Content:

A.E. McKenzie Building under construction

Notes: From the Brandon Sun.

Name Access: A.E. McKenzie Building

A.E. McKenzie & Co.

Subject Access: businesses

seeds

agricultural companies

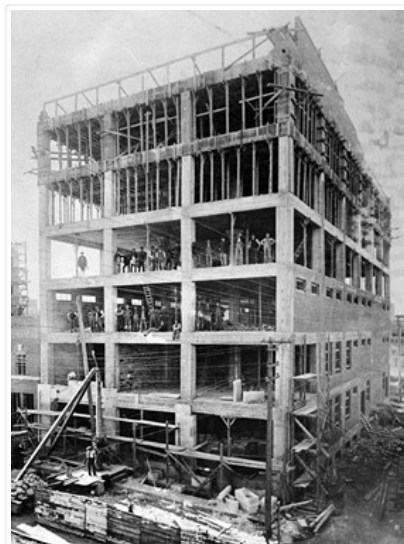
Brandon Early Construction Scenes

Repro Restriction: The McKee Archives is the copyright holder for the Stuckey materials.

Location Copy: 1-2002.3.9.106

Storage Location: Lawrence Stuckey collection

Images





Construction of St. Mary's Ukrainian Catholic Church

<http://archives.brandonu.ca/en/permalink/descriptions9773>

Part Of: RG 11 Lawrence Stuckey fonds

Creator: L.A. Stuckey

Description Level: Item

Series Number: 3.1

Item Number: 1-2002.3.1K11

Accession Number: 1-2002

GMD: graphic

Date Range: [between 1939 and 1941]

Physical Description: 2 1/2" x 2 1/2"

Material Details: Negative

History /

Biographical:

Construction began in 1939 and was completed in 1941.

Custodial History:

For custodial history see the collection level description of the Lawrence Stuckey collection.

Scope and Content:

Construction of St. Mary's Ukrainian Catholic Church

Notes: The small building is a shoe shop; sign by pole reads "Harry's Shoe Shop"

From the collection of Harry Pasklivich (the shoemaker)

Name Access: St. Mary's Ukrainian Catholic Church

Subject Access: shoe stores

Christianity

Church buildings

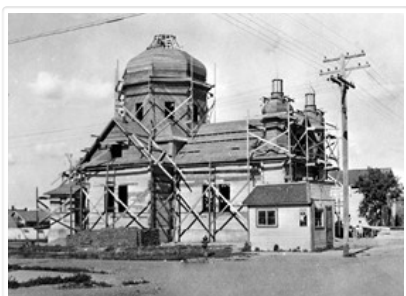
Brandon Churches

Brandon Early Construction Scenes

Repro Restriction: The McKee Archives is the copyright holder for the Stuckey materials.

Storage Location: Lawrence Stuckey collection

Images



Construction of Great Northern (BS&HB) Railway Bridge at



Bunclody - Grade

<http://archives.brandonu.ca/en/permalink/descriptions9977>

Part Of: RG 11 Lawrence Stuckey fonds
Description Level: Item
Series Number: 3.1
Item Number: 1-2002.3.1PE1
Accession Number: 1-2002
GMD: graphic
Date Range: [1905 or 1906]
Physical Description: 3 1/2" x 5"
Material Details: Negative

History /

Biographical:

According to Stuckey and Bain (1996), "The Brandon, Saskatchewan & Hudson's Bay Railway was built and operated as a totally owned subsidiary of the Great Northern Railway. Construction commenced in late 1905 and by the end of 1905, less than a mile of track had been laid north of the boundary at St. John. In 1906, the remaining 68.6 miles to Brandon were laid and service commenced that year. During the Depression of the 1930s, traffic declined significantly and the entire branch was abandoned in 1936. Over much of the branch's length, the ties and rails were laid on the prairie without ballast and today little remains of the line apart from traces where there were cuts and bridges." (p. 18)

Stuckey, L. A., & Bain, D. M. (1996). *The Great Northern and Northern Pacific railways in Canada*. Calgary, Alberta: British Railway Modellers of North America.

Custodial History:

For custodial history see the collection level description of the Lawrence Stuckey collection.

Scope and Content:

View of the Great Northern (BS&HB) Railway building a grade [to their bridge] at Bunclody, Manitoba.

Notes: [This railway bridge crossed the Souris River. P.E.]
From the collection of Gilford Copeland of Bunclody, Manitoba
Copy negative LAS.

Name Access: Construction of Great Northern (BS&HB) Railway
Brandon, Saskatchewan & Hudson's Bay Railway
Great Northern Railway

Subject Access: railroads
railways
manmade geographic features
construction
construction of bridges
bridges
Great Northern Railway from Church's Ferry ND to Brandon MB

Repro Restriction: The McKee Archives is the copyright holder for the Stuckey materials.

Storage Location: Lawrence Stuckey collection

Images



Construction of Great Northern (BS&HB) Railway Bridge at Bunclody - Grading Station

<http://archives.brandonu.ca/en/permalink/descriptions9978>

Part Of: RG 11 Lawrence Stuckey fonds

Description Level: Item

Series Number: 3.1

Item Number: 1-2002.3.1PE2

Accession Number: 1-2002

GMD: graphic

Date Range: [1905 or 1906]

Physical Description: 3 1/2" x 5"

Material Details: Negative

History /

Biographical:

According to Stuckey and Bain (1996), "The Brandon, Saskatchewan & Hudson's Bay Railway was built and operated as a totally owned subsidiary of the Great Northern Railway. Construction commenced in late 1905 and by the end of 1905, less than a mile of track had been laid north of the boundary at St. John. In 1906, the remaining 68.6 miles to Brandon were laid and service commenced that year. During the Depression of the 1930s, traffic declined significantly and the entire branch was abandoned in 1936. Over much of the branch's length, the ties and rails were laid on the prairie without ballast and today little remains of the line apart from traces where there were cuts and bridges." (p. 18)

Stuckey, L. A., & Bain, D. M. (1996). *The Great Northern and Northern Pacific railways in Canada*. Calgary, Alberta: British Railway Modellers of North America.

Custodial History:

For custodial history see the collection level description of the Lawrence Stuckey collection.

Scope and Content:

View of the Great Northern (BS&HB) Railway building a grade [to their bridge] at Bunclody, Manitoba.

Notes: Grading station site

From the collection of Gifford Copeland of Bunclody, Manitoba

Copy negative LAS.

Name Access: Construction of Great Northern (BS&HB) Railway
Brandon, Saskatchewan & Hudson's Bay Railway
Great Northern Railway

Subject Access: railroads
 railways
 manmade geographic features
 construction
 construction of bridges
 bridges
 Great Northern Railway from Church's Ferry ND to Brandon MB

Repro Restriction: The McKee Archives is the copyright holder for the Stuckey materials.

Storage Location: Lawrence Stuckey collection

Images

