

S. J. McKee Archives



Baldur, MB

<http://archives.brandonu.ca/en/permalink/descriptions14400>

Part Of: James Wall collection

Description Level: Item

Series Number: Box 2

Item Number: 12-2004.7

Accession Number: 12-2004

GMD: graphic

Date Range: [1900-1904]

Physical Description: 5.6" x 4" (b/w)

Material Details: On matting (7.5" x 5.6")

Physical Condition: good

Custodial History:

See collection level description for the James Douglas Wall collection.

Scope and Content:

Image of the town of Baldur, MB. Visible is the L. Curtis Block. Canadian Northern rail cars are in the foreground with horse drawn carts and men working on road and town buildings behind.

Subject Access: rural images

Storage Location: 2004 accessions

Images





Methodist Church - Baldur, MB

<http://archives.brandonu.ca/en/permalink/descriptions14396>

Part Of: James Wall collection
Description Level: Item
Series Number: Box 2
Item Number: 12-2004.3
Accession Number: 12-2004
GMD: graphic
Date Range: October 17, 1904
Physical Description: 8" x 6" (b/w)
Material Details: On matting (12" x 10")
Physical Condition: Bright spot in lower lefthand corner

Custodial History:

See collection level description for the James Douglas Wall collection.

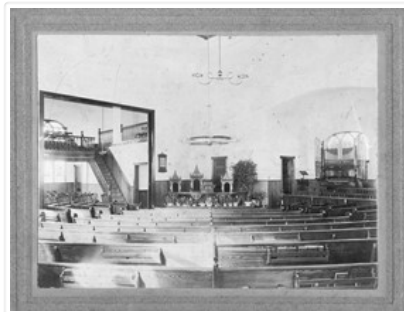
Scope and Content:

Image of the interior of the Methodist Church in Baldur, MB. The view is from the back of the church, looking over pews towards the pulpit.

Subject Access: rural images

Storage Location: 2004 accessions

Images





Baldur, MB from south

<http://archives.brandonu.ca/en/permalink/descriptions14399>

Part Of: James Wall collection

Description Level: Item

Series Number: Box 2

Item Number: 12-2004.6

Accession Number: 12-2004

GMD: graphic

Date Range: 1903

Physical Description: 6.75" x 4.75" (b/w)

Material Details: On matting (9" x 7")

Physical Condition: good

Custodial History:

See collection level description for the James Douglas Wall collection.

Scope and Content:

Image of the town of Baldur, MB. Looking south a body of water is in the foreground.

Subject Access: rural images

Storage Location: 2004 accessions

Images





Curtis block - Baldur, MB

<http://archives.brandonu.ca/en/permalink/descriptions14401>

Part Of: James Wall collection

Description Level: Item

Series Number: Box 2

Item Number: 12-2004.8

Accession Number: 12-2004

GMD: graphic

Date Range: [1900-1904]

Physical Description: 5.6" x 4" (b/w)

Material Details: On matting (7.5" x 5.6")

Physical Condition: good

History /

Biographical:

The Curtis Block was built in 1900, possibly by Fred Stevens.

Custodial History:

See collection level description for the James Douglas Wall collection.

Scope and Content:

Image of the Curtis Block in Baldur, MB. The Victoria Hall, for public performances, was located on the upper floor. A group of men, one holding a hockey stick, and a dog are standing in front of the street entrance to the building.

Subject Access: rural images

Storage Location: 2004 accessions

Images





Fowler block - Baldur, MB

<http://archives.brandonu.ca/en/permalink/descriptions14402>

Part Of: James Wall collection
Description Level: Item
Series Number: Box 2
Item Number: 12-2004.9
Accession Number: 12-2004
GMD: graphic
Date Range: [1900-1904]
Physical Description: 5.5" x 4" (b/w)
Material Details: On matting (6.4" x 4.25")
Physical Condition: good

History /

Biographical:

The Fowler Block in Baldur, MB was built in 1899 by Alex Fowler.

Custodial History:

See collection level description for the James Douglas Wall collection.

Scope and Content:

Image of the Fowler Block in Baldur, MB. On the left is a shoe and harness shop owned and operated by the Fowlers from 1899-1978. On the right is J. Smith & Co. Merchants, a grocery and dry goods store. As of 2000, a grocery store still occupied the premises. Men are standing in front of the entrance to the two stores.

Subject Access: rural images

Storage Location: 2004 accessions

Images





Cleghorn Pharmacy - Baldur, MB

<http://archives.brandonu.ca/en/permalink/descriptions14404>

Part Of: James Wall collection
Description Level: Item
Series Number: Box 2
Item Number: 12-2004.11
Accession Number: 12-2004
GMD: graphic
Date Range: [1900-1904]
Physical Description: 5.5" x 4" (b/w)
Material Details: On matting (6.44" x 4.1")
Physical Condition: Tiny piece of the photo is missing from the bottom edge and there are a few hairline cracks along the top of the photo

Custodial History:

See collection level description for the James Douglas Wall collection.

Scope and Content:

Image of three men standing in front of a building that appears to be Cleghorn's drug store.

Subject Access: rural images

Storage Location: 2004 accessions

Images





Mildred Bateman - Baldur, MB

<http://archives.brandonu.ca/en/permalink/descriptions14411>

Part Of: James Wall collection
Description Level: Item
Series Number: Box 2
Item Number: 12-2004.18
Accession Number: 12-2004
GMD: graphic
Date Range: [1900-1904]
Physical Description: 5.5" x 4" (b/w)
Material Details: On matting (6.4" x 4.25")
Physical Condition: good

History /

Biographical:

Mildred Bateman was born in 1897.

Custodial History:

See collection level description for the James Douglas Wall collection.

Scope and Content:

Image of Mildred Bateman in the front yard of Bateman house in Baldur, MB.

Subject Access: rural images

Storage Location: 2004 accessions

Images





Group portrait - Baldur, MB

<http://archives.brandonu.ca/en/permalink/descriptions14416>

Part Of: James Wall collection
Description Level: Item
Series Number: Box 1
Item Number: 12-2004.24
Accession Number: 12-2004
GMD: graphic
Date Range: [1900-1904]
Physical Description: 7.5" x 5" (b/w)
Material Details: On matting (8.75" x 6.75")
Physical Condition: good

Custodial History:

See collection level description for the James Douglas Wall collection.

Scope and Content:

Studio portrait of a group of men from Baldur, MB. Seated front (L-R): Jack Snyder, Tom Johnson?, Earl Preston?. Back row (L-R): unknown, Simon Desrocher?, Harold Bateman, unknown.

Subject Access: rural images

Storage Location: 2004 accessions

Images





Group portrait - Baldur, MB

<http://archives.brandonu.ca/en/permalink/descriptions14418>

Part Of: James Wall collection
Description Level: Item
Series Number: Box 2
Item Number: 12-2004.26
Accession Number: 12-2004
GMD: graphic
Date Range: [1900-1904]
Physical Description: 3" x 4" (b/w)
Material Details: On matting (4.25" x 6")
Physical Condition: Discoloration mark between the two men in the back row

Custodial History:

See collection level description for the James Douglas Wall collection.

Scope and Content:

Studio portrait of four men from Baldur, MB. Standing (L-R): Harold Bateman, Tom Johnson.
Seated (L-R): Jack Snydal, R. ?.

Notes: May have been taken at the same time as 12-2004.24

Subject Access: rural images

Storage Location: 2004 accessions

Images





Benedict Anderson - Baldur, MB

<http://archives.brandonu.ca/en/permalink/descriptions14422>

Part Of: James Wall collection
Creator: Photographer: E.L. Lane, Glenboro, MB
Description Level: Item
Series Number: Box 2
Item Number: 12-2004.29
Accession Number: 12-2004
GMD: graphic
Date Range: [1903-1904]
Physical Description: 3.5" x 5.1" (b/w)
Material Details: On matting (5.25" x 7.25")
Physical Condition: good

History /

Biographical:

Benedict Anderson married Millie Goodman on February 21, 1929 (Grund District info from Baldur book, page 435, RM of Argyle)

Custodial History:

See collection level description for the James Douglas Wall collection.

Scope and Content:

Studio portrait of a man, probably Benedict Anderson, from Baldur, MB.

Subject Access: rural images

Storage Location: 2004 accessions

Images





Snydal sisters - Baldur, MB

<http://archives.brandonu.ca/en/permalink/descriptions14423>

Part Of: James Wall collection
Description Level: Item
Series Number: Box 2
Item Number: 12-2004.30
Accession Number: 12-2004
GMD: graphic
Date Range: [1900-1904]
Physical Description: 2.5" x 3.5" (b/w)
Material Details: On matting (4.25" x 6.5")
Physical Condition: Some fading on the photo, centre right

History /

Biographical:

Ella Snydal married Clyde Playfair. Jennie Snydal married Percival Bond.

Custodial History:

See collection level description for the James Douglas Wall collection.

Scope and Content:

Studio portrait of the Snydal sisters - Ella, Jennie and Lil - of Baldur, MB.

Subject Access: rural images

Storage Location: 2004 accessions

Images





Unknown man - Baldur, MB

<http://archives.brandonu.ca/en/permalink/descriptions14425>

Part Of: James Wall collection
Creator: Photographer: E.L. Lane, Glenboro, MB
Description Level: Item
Series Number: Box 2
Item Number: 12-2004.32
Accession Number: 12-2004
GMD: graphic
Date Range: [1903-1904]
Physical Description: 3.9" x 5.5" (b/w)
Material Details: On matting (5.75" x 7.75")

Custodial History:

See collection level description for the James Douglas Wall collection.

Scope and Content:

Studio portrait of an unknown man from Baldur, MB.

Notes: Writing on the back reads: "P.F. Curtis?"

Subject Access: rural images

Storage Location: 2004 accessions

Images





Family gathering - Baldur, MB

<http://archives.brandonu.ca/en/permalink/descriptions14428>

Part Of: James Wall collection

Description Level: Item

Series Number: Box 1

Item Number: 12-2004.35

Accession Number: 12-2004

GMD: graphic

Date Range: [1900-1904]

Physical Description: 6.75" x 4.9" (b/w)

Material Details: On matting (9.9" x 8")

Physical Condition: good

Custodial History:

See collection level description for the James Douglas Wall collection.

Scope and Content:

Group portrait of what may be a family reunion or wedding anniversary celebration. There are some potted plants and a couple of photographs placed in front of the group. The woman seated in the wooden chair towards the centre of the image is wearing a corsage.

Subject Access: rural images

Storage Location: 2004 accessions

Images





Methodist Church construction in Baldur, MB

<http://archives.brandonu.ca/en/permalink/descriptions14395>

Part Of: James Wall collection

Description Level: Item

Series Number: Box 1

Item Number: 12-2004.2

Accession Number: 12-2004

GMD: graphic

Date Range: [1900-1904]

Physical Description: 8" x 6" (b/w)

Material Details: On matting (12" x 10")

Physical Condition: good

Custodial History:

See collection level description for the James Douglas Wall collection.

Scope and Content:

Image of a group of people standing

Subject Access: rural images

Storage Location: 2004 accessions

Images



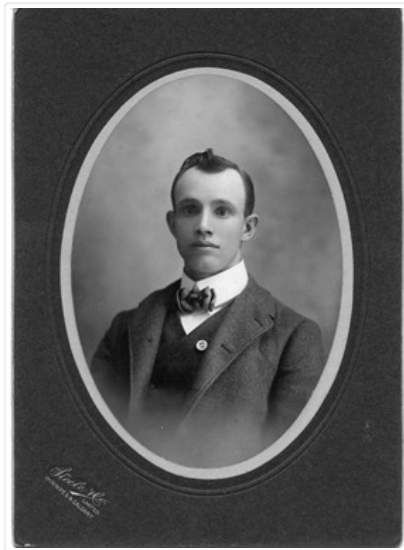


Percy F. Curtis - Baldur, MB

<http://archives.brandonu.ca/en/permalink/descriptions14412>

Part Of: James Wall collection
Creator: Photographer: Steele & Co. Limited, Winnipeg & Calgary
Description Level: Item
Series Number: Box 2
Item Number: 12-2004.19
Accession Number: 12-2004
GMD: graphic
Date Range: [1900-1904]
Physical Description: 3.5" x 5.1" (b/w)
Material Details: On matting (5" x 7")
Physical Condition: Discoloration along the bottom of the photo
Custodial History:
See collection level description for the James Douglas Wall collection.
Scope and Content:
Studio portrait of a man identified as possibly Percy F. Curtis of Baldur, MB.
Subject Access: rural images
Storage Location: 2004 accessions

Images





Interior of Cleghorn Pharmacy - Baldur, MB

<http://archives.brandonu.ca/en/permalink/descriptions14413>

Part Of: James Wall collection
Description Level: Item
Series Number: Box 2
Item Number: 12-2004.21
Accession Number: 12-2004
GMD: graphic
Date Range: 1901
Physical Description: 6.5" x 4.9" (b/w)
Material Details: On matting (9.25" x 7.25")
Physical Condition: good
Custodial History:

See collection level description for the James Douglas Wall collection.

Scope and Content:

Image of two men standing in the interior of Cleghorn Pharmacy in Baldur, MB.

Subject Access: rural images

Storage Location: 2004 accessions

Images



Dr. L.M. Cleghorn - Baldur, MB

<http://archives.brandonu.ca/en/permalink/descriptions14417>

Part Of: James Wall collection
Creator: Photographer: J.G. Macdonald, Moosomin, Assa.
Description Level: Item
Series Number: Box 2
Item Number: 12-2004.25
Accession Number: 12-2004
GMD: graphic
Date Range: [1900-1904]
Physical Description: 2.25" x 5.5" (b/w)
Material Details: On matting (5" x 8.75")

Physical Condition: Photo is faded and has some discoloration dots throughout

History /

Biographical:

Dr. L.M. Cleghorn was born in 1863 and died in 1926.

Custodial History:

See collection level description for the James Douglas Wall collection.

Scope and Content:

Studio portrait of Dr. L.M. Cleghorn, who owned the pharmacy in Baldur, MB.

Subject Access: rural images

Storage Location: 2004 accessions

Images





Group portrait of Baldur, MB residents

<http://archives.brandonu.ca/en/permalink/descriptions14421>

Part Of: James Wall collection
Description Level: Item
Series Number: Box 1
Item Number: 12-2004.20
Accession Number: 12-2004
GMD: graphic
Date Range: [1900-1904]
Physical Description: 5.25" x 3.25" (b/w)
Material Details: On matting (7.5" x 5.25")
Physical Condition: good

Custodial History:

See collection level description for the James Douglas Wall collection.

Scope and Content:

Portrait of a group of Baldur residents standing in a field

Notes: Writing on the back reads: "Xmas 1906 Wishing you all the greetings of the season."

Subject Access: rural images

Storage Location: 2004 accessions

Images





Bateman house - Baldur, MB

<http://archives.brandonu.ca/en/permalink/descriptions14410>

Part Of: James Wall collection
Description Level: Item
Series Number: Box 2
Item Number: 12-2004.17
Accession Number: 12-2004
GMD: graphic
Date Range: [1900-1904]
Physical Description: 4" x 3" (b/w)
Material Details: On matting (6" x 5")
Physical Condition: Some bright spots/discoloration along the top and right side of the photo

Custodial History:

See collection level description for the James Douglas Wall collection.

Scope and Content:

Image of the Bateman house, located in Baldur, MB, in winter.

Subject Access: rural images

winter

Storage Location: 2004 accessions

Images





Alex Fowler in his store - Baldur, MB

<http://archives.brandonu.ca/en/permalink/descriptions14403>

Part Of: James Wall collection
Description Level: Item
Series Number: Box 2
Item Number: 12-2004.10
Accession Number: 12-2004
GMD: graphic
Date Range: [1900-1904]
Physical Description: 5.5" x 4" (b/w)
Material Details: On matting (6.44" x 4.1")
Physical Condition: good

History /

Biographical:

The Fowler Block in Baldur, MB was built in 1899 by Alex Fowler.

Custodial History:

See collection level description for the James Douglas Wall collection.

Scope and Content:

Image of Alex Fowler standing at the counter in his store. The shelves behind him are stacked with tins of dry good, while the shelves to his side are stacked with china and glass items. The post office operated out of the back of the store.

Subject Access: rural images

Storage Location: 2004 accessions

Images

