

S. J. McKee Archives



St. Agnes Anglican (1902) Church and manse, Carberry, Manitoba.

<http://archives.brandonu.ca/en/permalink/descriptions10630>

Part Of: RG 11 Lawrence Stuckey fonds

Creator: L.A. Stuckey

Description Level: Item

Series Number: 3.3

Item Number: 1-2002.3.3.CPR[97c]

Accession Number: 1-2002

GMD: graphic

Date Range: December 12, 1978

Physical Description: 2.5"x2.25"

Material Details: Negative

Custodial History:

For custodial history see the collection level description of the Lawrence Stuckey collection.

Scope and Content:

Image of St. Agnes Anglican (1902) Church and manse, Carberry, Manitoba. Image was taken along the CPR Carberry Subdivision track.

Notes: [Mr. Stuckey put four negatives in the same envelope. We have separated them and numbered them (97a) to (97d)].

Name Access: Carberry, Manitoba

St. Agnes Anglican Church

Subject Access: Church buildings
churches

Repro Restriction: The McKee Archives is the copyright holder of the Stuckey materials.

Storage Location: Lawrence Stuckey collection

Images





St. Agnes Anglican (1902) Church and manse, Carberry, Manitoba.

<http://archives.brandonu.ca/en/permalink/descriptions10629>

Part Of: RG 11 Lawrence Stuckey fonds
Creator: L.A. Stuckey
Description Level: Item
Series Number: 3.3
Item Number: 1-2002.3.3.CPR[97a]
Accession Number: 1-2002
GMD: graphic
Date Range: December 12, 1978
Physical Description: 2.5"x2.5"
Material Details: Negative
Custodial History:

For custodial history see the collection level description of the Lawrence Stuckey collection.

Scope and Content:

Image of St. Agnes Anglican (1902) Church and manse, Carberry, Manitoba. Image was taken along the CPR Carberry Subdivision track.

Notes: [Mr. Stuckey put four negatives in the same envelope. We have separated them and numbered them (97a) to (97d)].

Name Access: Carberry, Manitoba

St. Agnes Anglican Church

Subject Access: Church buildings

churches

houses

Repro Restriction: The McKee Archives is the copyright holder of the Stuckey materials.

Storage Location: Lawrence Stuckey collection

Images





Anglican Church, Reston, Manitoba

<http://archives.brandonu.ca/en/permalink/descriptions10334>

Part Of: RG 11 Lawrence Stuckey fonds

Creator: L.A. Stuckey

Description Level: Item

Series Number: 3.3

Item Number: 1-2002.3.3.CPR[71]

Accession Number: 1-2002

GMD: graphic

Date Range: July 1, 1986

Physical Description: 2.5" x 2.75" (b/w)

Material Details: Negative

Custodial History:

For custodial history see the collection level description of the Lawrence Stuckey collection.

Scope and Content:

Image of the Anglican Church in Reston, Manitoba. Image was taken along the CPR lines south of the mainline.

Name Access: Reston

Reston Anglican Church

Subject Access: churches

Repro Restriction: The McKee Archives is the copyright holder of the Stuckey materials.

Storage Location: Lawrence Stuckey collection

Images





St. Paul's Presbyterian Church interior

<http://archives.brandonu.ca/en/permalink/descriptions10117>

Part Of: RG 12 Brandon and Area Photograph Collection

Description Level: Item

Series Number: 2

Item Number: BAPC 2.4

GMD: graphic

Date Range: [1900-1901]

Physical Description: 4" x 6" (b/w)

History /

Biographical:

St. Paul's Presbyterian Church, which became St. Paul's United Church, and then Central United Church was located at 327 8th Street in Brandon, MB. The original church was destroyed by fire in 1986.

Scope and Content:

Photograph shows the interior of the St. Paul's Presbyterian Church in Brandon, MB.

Notes: History/Bio information provided by Jim Stettner, Organ Historical Society Database (2022).

Name Access: St. Paul's Presbyterian Church

Subject Access: Church buildings

churches

public buildings

Storage Location: BAPC photograph drawer

Images





Christmas at St. Matthews Church

<http://archives.brandonu.ca/en/permalink/descriptions10201>

Part Of: RG 12 Brandon and Area Photograph Collection

Description Level: Item

Series Number: 6

Item Number: BAPC 6.3

Accession Number: 4-1997

GMD: graphic

Date Range: 1886

Physical Description: 4.5" x 7" (b/w)

Material Details: On matting

Custodial History:

Donated to the Brandon College Library by Hilda Hesson in 1967.

Scope and Content:

Christmas 1886. St. Matthews Church in Brandon, MB

Notes: Writing on the back of the photo reads: Rector, Rev. E.P. Flewelling. The name W. Peters and other illegible words are also written.

Name Access: St. Matthews Church

Subject Access: Christmas
churches

Storage Location: BAPC photograph drawer

Images





Church (stone), Minnedosa, Manitoba.

<http://archives.brandonu.ca/en/permalink/descriptions10673>

Part Of: RG 11 Lawrence Stuckey fonds

Creator: L.A. Stuckey

Description Level: Item

Series Number: 3.3

Item Number: 1-2002.3.3.CPR[106]

Accession Number: 1-2002

GMD: graphic

Date Range: January 29, 1979

Physical Description: 2.5" x 2.5" (b/w)

Material Details: Negative

Custodial History:

For custodial history see the collection level description of the Lawrence Stuckey collection.

Scope and Content:

Image of a stone church in Minnedosa, Manitoba. Image was taken along the CPR Minnedosa & Bredenbury subdivision (ex. Manitoba & N.W. Railway).

Notes: [The image appears to be an image of St. Mark's Anglican Church].

Name Access: Minnedosa, Manitoba

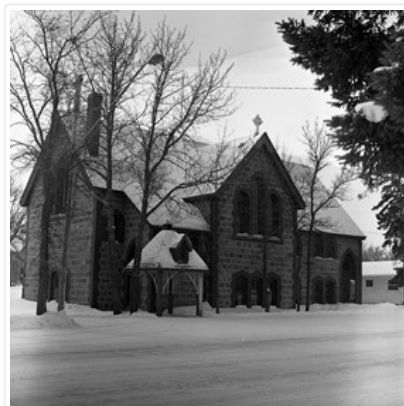
St. Mark's Anglican Church

Subject Access: churches

Repro Restriction: The McKee Archives is the copyright holder of the Stuckey materials.

Storage Location: Lawrence Stuckey collection

Images





Calvary Church, Minnedosa, Manitoba.

<http://archives.brandonu.ca/en/permalink/descriptions10678>

Part Of: RG 11 Lawrence Stuckey fonds

Creator: L.A. Stuckey

Description Level: Item

Series Number: 3.3

Item Number: 1-2002.3.3.CPR[107]

Accession Number: 1-2002

GMD: graphic

Date Range: January 27, 1979

Physical Description: 2.5" x 2.5" (b/w)

Material Details: Negative

Custodial History:

For custodial history see the collection level description of the Lawrence Stuckey collection.

Scope and Content:

Image of Calvary Church, Minnedosa, Manitoba. Image was taken along the CPR Minnedosa & Bredenburg subdivision (ex. Manitoba & N.W. Railway).

Name Access: Minnedosa, Manitoba

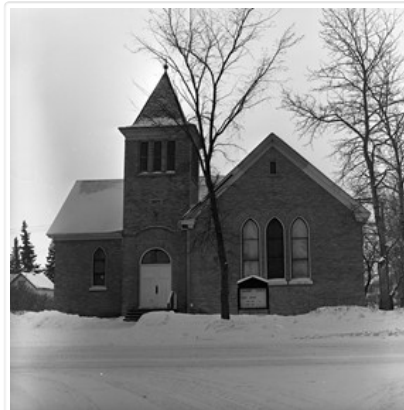
Calvary Church

Subject Access: churches

Repro Restriction: The McKee Archives is the copyright holder of the Stuckey materials.

Storage Location: Lawrence Stuckey collection

Images





Church, Shoal Lake, Manitoba.

<http://archives.brandonu.ca/en/permalink/descriptions10765>

Part Of: RG 11 Lawrence Stuckey fonds

Creator: L.A. Stuckey

Description Level: Item

Series Number: 3.3

Item Number: 1-2002.3.3.CPR[125]

Accession Number: 1-2002

GMD: graphic

Date Range: February 12, 1979

Physical Description: 2.5" x2.5" (b/w)

Material Details: Negative

Custodial History:

For custodial history see the collection level description of the Lawrence Stuckey collection.

Scope and Content:

Image of a church, Shoal Lake, Manitoba. Image was taken along the CPR Minnedosa & Bredenbury subdivision (ex. Manitoba & N.W. Railway).

Name Access: CPR

Shoal Lake, Manitoba

Subject Access: churches

Repro Restriction: The McKee Archives is the copyright holder of the Stuckey materials.

Storage Location: Lawrence Stuckey collection

Images





Lorne Avenue, looking west from St. Augustine's Church postcard

<http://archives.brandonu.ca/en/permalink/descriptions13937>

Part Of: Fred McGuinness collection

Creator: Photograph by: J.V.

Description Level: Item

Series Number: McG 9

Item Number: 1-2015.9

Accession Number: 1-2015

GMD: graphic

Date Range: 1952

Physical Description: 5.5" x 3.5" (colour)

Material Details: postcard

Scope and Content:

Photograph shows a western view of the residential area along Lorne Avenue from St. Augustine's Roman Catholic Church. Roof-tops of Central School, First Baptist, Brandon College, Manitoba Power Plant, and Old City Hall are visible.

Notes: Writing on the front of the postcard reads: Lorne Avenue, looking West from St. Augustine's R.C. Church, Brandon, Man. Writing on the back of the postcard reads: The Valentine & Sons Publishing Ltd., Montreal and London, Printed in Great Britain. A cancelled George VI purple Canada 3 cent stamp has been postmarked: Brandon SP 11 52.

Name Access: Lorne Avenue

Subject Access: residential streets

residences

churches

Storage Location: RG 5 photograph storage drawer 2 (hanging photos)

Arrangement:

McG BR#9 - "Ashgrove Farms CBC"

Images





Small church, Shoal Lake, Manitoba.

<http://archives.brandonu.ca/en/permalink/descriptions10766>

Part Of: RG 11 Lawrence Stuckey fonds

Creator: L.A. Stuckey

Description Level: Item

Series Number: 3.3

Item Number: 1-2002.3.3.CPR[126]

Accession Number: 1-2002

GMD: graphic

Date Range: February 12, 1979

Physical Description: 2.5" x2.75" (b/w)

Material Details: Negative

Custodial History:

For custodial history see the collection level description of the Lawrence Stuckey collection.

Scope and Content:

Image of a small church, Shoal Lake, Manitoba. Image was taken along the CPR Minnedosa & Bredenbury subdivision (ex. Manitoba & N.W. Railway).

Name Access: CPR

Shoal Lake, Manitoba

Subject Access: churches

Repro Restriction: The McKee Archives is the copyright holder of the Stuckey materials.

Storage Location: Lawrence Stuckey collection

Images





Ukrainian RC Church, Holy Ascension, Minnedosa, Manitoba.

<http://archives.brandonu.ca/en/permalink/descriptions10668>

Part Of: RG 11 Lawrence Stuckey fonds

Creator: L.A. Stuckey

Description Level: Item

Series Number: 3.3

Item Number: 1-2002.3.3.CPR[105]

Accession Number: 1-2002

GMD: graphic

Date Range: October 27, 1985

Physical Description: 2.5" x 2.75" (b/w)

Material Details: Negative

Custodial History:

For custodial history see the collection level description of the Lawrence Stuckey collection.

Scope and Content:

Image of Holy Ascension Ukrainian RC Church, Minnedosa, Manitoba. Image was taken along the CPR Minnedosa & Bredenburg subdivision (ex. Manitoba & N.W. Railway).

Name Access: Minnedosa, Manitoba

Holy Ascension Ukrainian Catholic Church

Subject Access: churches

Repro Restriction: The McKee Archives is the copyright holder of the Stuckey materials.

Storage Location: Lawrence Stuckey collection

Images





Dunston United Church, built 1895, near Miami, Manitoba

<http://archives.brandonu.ca/en/permalink/descriptions11129>

Part Of: RG 11 Lawrence Stuckey fonds

Creator: L.A. Stuckey

Description Level: Item

Series Number: 3.3

Item Number: 1-2002.3.3.BSE[365a]

GMD: graphic

Date Range: May 1, 1977

Physical Description: 2.5" x 2.25"

Material Details: Negative

Custodial History:

For custodial history see the collection level description of the Lawrence Stuckey collection.

Scope and Content:

Image of Dunston United Church, built 1895, near Miami, Manitoba.

Notes: [Brandon SE includes communities south of Trans-Canada #1 highway and east of PTH #10.]

Name Access: Dunston United Church

Miami, Manitoba

Subject Access: churches

Storage Location: Lawrence Stuckey collection

Arrangement:

[Mr. Stuckey put two negatives in the same envelope. We have separated them and numbered the negatives (365a) and (365b)].

Images



Bethel Church (1895) on Highways 2 & 21 west of Deleau, Manitoba.

<http://archives.brandonu.ca/en/permalink/descriptions10892>

Part Of: RG 11 Lawrence Stuckey fonds



Creator: L.A. Stuckey
Description Level: Item
Series Number: 3.3
Item Number: 1-2002.3.3.BSW[349a]
Accession Number: 1-2002
GMD: graphic
Date Range: Aug 25, 1979
Physical Description: 2.5" x 2.5" (b/w)
Material Details: Negative

History /

Biographical:

Mr. Stuckey's notes: 2 exterior and 3 windows.

Custodial History:

For custodial history see the collection level description of the Lawrence Stuckey collection.

Scope and Content:

Image of Bethel Church (1895) on Highways 2 & 21 west of Deleau, Manitoba.

Notes: [Brandon SW includes communities south of Trans-Canada #1 highway and west of PTH #10.] [Images 349a and 349b are images of the exterior of the church, and images 349c-349-e are images of the stained glass windows.]

Name Access: Bethel Church
Deleau, Manitoba

Subject Access: churches

Repro Restriction: The McKee Archives is the copyright holder of the Stuckey materials.

Storage Location: Lawrence Stuckey collection

Arrangement:

Mr. Stuckey put five negatives in the same envelope. We have separated them and numbered them (349a) to (349e)].

Images



Bethel Church (1895) on Highways 2 & 21 west of Deleau, Manitoba.



<http://archives.brandonu.ca/en/permalink/descriptions10897>

Part Of: RG 11 Lawrence Stuckey fonds
Creator: L.A. Stuckey
Description Level: Item
Series Number: 3.3
Item Number: 1-2002.3.3.BSW[349b]
Accession Number: 1-2002
GMD: graphic
Date Range: Aug 25, 1979
Physical Description: 2.5" x 2.5" (b/w)
Material Details: Negative

History /

Biographical:

Mr. Stuckey's notes: 2 exterior and 3 windows.

Custodial History:

For custodial history see the collection level description of the Lawrence Stuckey collection.

Scope and Content:

Image of Bethel Church (1895) on Highways 2 & 21 west of Deleau, Manitoba.

Notes: [Brandon SW includes communities south of Trans-Canada #1 highway and west of PTH #10.] [Images 349a and 349b are images of the exterior of the church, and images 349c-349-e are images of the stained glass windows.]

Name Access: Bethel Church
Deleau, Manitoba

Subject Access: churches

Repro Restriction: The McKee Archives is the copyright holder of the Stuckey materials.

Storage Location: Lawrence Stuckey collection

Arrangement:

Mr. Stuckey put five negatives in the same envelope. We have separated them and numbered them (349a) to (349e)].

Images





Bethel Church (1895) on Highways 2 & 21 west of Deleau, Manitoba.

<http://archives.brandonu.ca/en/permalink/descriptions10901>

Part Of: RG 11 Lawrence Stuckey fonds

Creator: L.A. Stuckey

Description Level: Item

Series Number: 3.3

Item Number: 1-2002.3.3.BSW[349c]

Accession Number: 1-2002

GMD: graphic

Date Range: Aug 25, 1979

Physical Description: 2.5" x 2.5" (b/w)

Material Details: Negative

History /

Biographical:

Mr. Stuckey's notes: 2 exterior and 3 windows.

Custodial History:

For custodial history see the collection level description of the Lawrence Stuckey collection.

Scope and Content:

Image of Bethel Church (1895) on Highways 2 & 21 west of Deleau, Manitoba.

Notes: [Brandon SW includes communities south of Trans-Canada #1 highway and west of PTH #10.] [Images 349a and 349b are images of the exterior of the church, and images 349c-349-e are images of the stained glass windows.]

Name Access: Bethel Church

Deleau, Manitoba

Subject Access: churches

Repro Restriction: The McKee Archives is the copyright holder of the Stuckey materials.

Storage Location: Lawrence Stuckey collection

Arrangement:

Mr. Stuckey put five negatives in the same envelope. We have separated them and numbered them (349a) to (349e)].

Images





Bethel Church (1895) on Highways 2 & 21 west of Deleau, Manitoba.

<http://archives.brandonu.ca/en/permalink/descriptions10902>

Part Of: RG 11 Lawrence Stuckey fonds
Creator: L.A. Stuckey
Description Level: Item
Series Number: 3.3
Item Number: 1-2002.3.3.BSW[349d]
Accession Number: 1-2002
GMD: graphic
Date Range: Aug 25, 1979
Physical Description: 2.5" x 2.5" (b/w)
Material Details: Negative

History /

Biographical:

Mr. Stuckey's notes: 2 exterior and 3 windows.

Custodial History:

For custodial history see the collection level description of the Lawrence Stuckey collection.

Scope and Content:

Image of Bethel Church (1895) on Highways 2 & 21 west of Deleau, Manitoba.

Notes: [Brandon SW includes communities south of Trans-Canada #1 highway and west of PTH #10.] [Images 349a and 349b are images of the exterior of the church, and images 349c-349-e are images of the stained glass windows.]

Name Access: Bethel Church
Deleau, Manitoba

Subject Access: churches

Repro Restriction: The McKee Archives is the copyright holder of the Stuckey materials.

Storage Location: Lawrence Stuckey collection

Arrangement:

Mr. Stuckey put five negatives in the same envelope. We have separated them and numbered them (349a) to (349e)].

Images



Bethel Church (1895) on Highways 2 & 21 west of Deleau, Manitoba.

<http://archives.brandonu.ca/en/permalink/descriptions10904>

Part Of: RG 11 Lawrence Stuckey fonds
Creator: L.A. Stuckey
Description Level: Item
Series Number: 3.3
Item Number: 1-2002.3.3.BSW[349e]
Accession Number: 1-2002
GMD: graphic
Date Range: Aug 25, 1979
Physical Description: 2.5" x 2.5" (b/w)
Material Details: Negative

History /

Biographical:

Mr. Stuckey's notes: 2 exterior and 3 windows.

Custodial History:

For custodial history see the collection level description of the Lawrence Stuckey collection.

Scope and Content:

Image of Bethel Church (1895) on Highways 2 & 21 west of Deleau, Manitoba.

Notes: [Brandon SW includes communities south of Trans-Canada #1 highway and west of PTH #10.] [Images 349a and 349b are images of the exterior of the church, and images 349c-349-e are images of the stained glass windows.]

Name Access: Bethel Church
Deleau, Manitoba

Subject Access: churches

Repro Restriction: The McKee Archives is the copyright holder of the Stuckey materials.

Storage Location: Lawrence Stuckey collection

Arrangement:

Mr. Stuckey put five negatives in the same envelope. We have separated them and numbered them (349a) to (349e)].





Churches of Brandon postcard

<http://archives.brandonu.ca/en/permalink/descriptions13871>

Part Of: Fred McGuinness collection
Creator: Published by Christie's Bookstore, Brandon, Man.
Description Level: Item
Series Number: McG 9
Item Number: 20-2009.181
Accession Number: 20-2009
GMD: graphic
Date Range: 1910s
Physical Description: 3.5" x 5.5" (colour)
Material Details: postcard

Scope and Content:

Photograph shows exterior views of five Brandon churches: Baptist Church, Presbyterian Church, St. Matthew's Church, Catholic Church and Monastery, and Methodist Church.

Notes: Part of "Christie's Brandon Series of Six Colored Picture Postcards of Brandon, Manitoba, The Crown Series, Published by Christie's Bookstore, Brandon, Man." [note: missing sixth postcard]. Writing on the front of the photograph reads: Baptist Church, Presbyterian Church Brandon Man., St. Matthew's Church, Catholic Church and Monastery, Methodist Church.

Name Access: St. Matthew's Church
St. Augustine's Church
First Baptist Church
Presbyterian Church
Methodist Church

Subject Access: churches
building exteriors
Brandon business buildings & facilities before 1940

Storage Location: RG 5 photograph storage drawer 2 (hanging photos)

Arrangement:

From 20-2009 File 9

Images





English Church, Killarney

<http://archives.brandonu.ca/en/permalink/descriptions13910>

Part Of: Fred McGuinness collection
Creator: Photographer: Winnipeg Photo Company
Description Level: Item
Series Number: McG 9
Item Number: 20-2009.220
Accession Number: 20-2009
GMD: graphic
Date Range: 1908
Physical Description: 5.5" x 3.5" (b/w)
Material Details: postcard
Physical Condition: Photocard has been mailed
Scope and Content:

Photograph shows the English Church in Killarney, Manitoba. The entrance to the brick structure is obscured by trees.

Notes: Writing on the front of the postcard reads: English Church, Killarney, Copyright Canada 1908 by Winnipeg Photo Company, No. 3. Writing on the back of the postcard reads: Photo Post Card by Winnipeg Photo Co., Napinka, Man. The postcard is addressed to Miss Annie Pope of 638 Pacific Avenue, Brandon. A green one cent King George stamp is postmarked Killarney Manitoba 22 July 1908.

Name Access: Killarney, Manitoba
Church of England

Subject Access: churches

Storage Location: RG 5 photograph storage drawer 2 (hanging photos)

Arrangement:

From 20-2009 #4 plastic envelope #2

Images





Hornerite Church, southwest of Carnduff, Saskatchewan

<http://archives.brandonu.ca/en/permalink/descriptions10856>

Part Of: RG 11 Lawrence Stuckey fonds

Creator: L.A. Stuckey

Description Level: Item

Series Number: 3.3

Item Number: 1-2002.3.3.BSW[340a]

Accession Number: 1-2002

GMD: graphic

Date Range: Aug 26, 1979

Physical Description: 2.5" x 2.75" (b/w)

Material Details: Negative

History /

Biographical:

Mr. Stuckey's notes: Built 1901. This sect has apparently died out (a Holy Roller sect).

Custodial History:

For custodial history see the collection level description of the Lawrence Stuckey collection.

Scope and Content:

Image of Homerite Church, southwest of Carnduff, Saskatchewan.

Notes: [Brandon SW includes communities south of Trans-Canada #1 highway and west of PTH #10.]

Name Access: Hornerite Church
Carnduff, Saskatchewan

Subject Access: churches

Repro Restriction: The McKee Archives is the copyright holder of the Stuckey materials.

Storage Location: Lawrence Stuckey collection

Arrangement:

[Mr. Stuckey put two negatives in the same envelope. We have separated them and numbered them (340a) to (340b)].

Images

