

S. J. McKee Archives



Graham site 2008 - field journals

<http://archives.brandonu.ca/en/permalink/descriptions11959>

Part Of: RG 7 Beverley Nicholson fonds

Description Level: sub sub sub series

Series Number: 1.4.4.2

Accession Number: 1-2010

GMD: multiple media

Date Range: 2008

Material Details: Field journals have been scanned in multi-page PDF files.

History /

Biographical:

In 2008 Brandon University Archaeology returned to the Crepeele locale to conduct further testing at the Graham and Crepeele sites. Four units (XU 47-49 & 53) were excavated at Graham 2008 in order to collect samples and add further data to previous excavations. The usual excavation methodology was employed.

The small crew was directed by Bev Nicholson with Crew of Bill Foy, Andrew Lints & Kim Harrison

Recoveries included faunal (mostly bison), lithics and ceramics.

Scope and Content:

Record of daily observations at the site including: excavation methods, items recovered, features, local environment and weather.

Name Access: Graham site 2008 - field journals

Subject Access: Archaeology
Crepeele locale
Graham site DiMe-30
Graham site 2008



Crepeele site 2004 - summary information

<http://archives.brandonu.ca/en/permalink/descriptions11726>

Part Of: RG 7 Beverley Nicholson fonds

Description Level: sub sub sub series

Series Number: 1.2.2.1

Accession Number: 1-2010

GMD: multiple media

Date Range: 2004

Material Details: Field journals have been scanned in multi-page PDF files. Artifact catalogues are PDF files in spreadsheet format. Photographs are in jpeg format.

History /

Biographical:

The Crepeele site was identified from the results of the Casselman survey and excavated in 2003. Further units 1 to 8 were excavated in 2004. Funding was through the SCAPE project, directed by Dr. Bev Nicholson. The site was excavated by Crew Chief Tomasin Playford and crew.

Scope and Content:

Sub-sub-sub series contains: Summary information of field methodology, number and co-ordinates of excavations, personnel and their staff position.

Name Access: Crepeele site 2004 - summary information

Subject Access: Archaeology
Crepeele locale
Crepeele site DiMe-29
Crepeele site 2004

Documents

ARCH 1.1 Crepeele Locals
1.2 Crepeele Site DiMe-29
1.2.2 Crepeele 2004
1.2.2.1 Summary Information

Crew Chief: Tomasin Playford with Crew of: Andrea Richards, Sarah Gordon, Sherry Lefebvre, Eric Cross

Excavation Unit	Catalogue Co-ordinates	Excavator
Unit 1	4550N 315W	Andrea Richards
Unit 2	4550N 315W	Sarah Gordon
Unit 3	4550N 315W	Tomasin Playford
Unit 4	4550N 315W	Sherry Lefebvre
Unit 5	4550N 315W	Andrea Richards
Unit 6	4550N 315W	Eric Cross
Unit 7	4550N 315W	Tomasin Playford
Unit 8	4550N 315W	Sherry Lefebvre
Unit 9	4750N 315W	Tomasin Playford
Unit 10	4750N 315W	Sherry Lefebvre

After excavation the units 1 and 2 were consolidated separately from the Crepeele site and were re-excavated by Gordon in 2004. The 10th unit was re-excavated in 2011 and is now in Archives 1.2.2.1 (DiMe-29).

1.2.2.1_C04_Summary.pdf

Read PDF

Download PDF



Crepeele site 2005 - field journals

<http://archives.bradonu.ca/en/permalink/descriptions11727>

Part Of: RG 7 Beverley Nicholson fonds

Description Level: sub sub sub series

Series Number: 1.2.3.2

Accession Number: 1-2010

GMD: multiple media

Date Range: 2005

Material Details: Field journals have been scanned in multi-page PDF files.

History /
Biographical:

In 2005 the Brandon University Field School was held at both the Crepeele and Graham sites in the Crepeele locale.

At the Crepeele site nine units were excavated (XU10-16 & 20, 21). Units 20 & 21 were referred to as Meadow in the notes but are considered part of the larger site based on recoveries.

Denise Ens instructed the school and James Graham was teaching assistant. Field journals were kept by both instructors.

Scope and Content:

Record of daily observations at the site including: excavation methods, items recovered, features, local environment and weather.

Name Access: Crepeele site 2005 - field journals

Subject Access: Archaeology
Crepeele locale
Crepeele site DiMe-29
Crepeele site 2005



Crepeele site 2005 - summary information

<http://archives.bradonu.ca/en/permalink/descriptions11749>

Part Of: RG 7 Beverley Nicholson fonds

Description Level: sub sub sub series

Series Number: 1.2.3.1

Accession Number: 1-2010

GMD: multiple media

Date Range: 2005

Material Details: Field journals have been scanned in multi-page PDF files. Artifact catalogues are PDF files in spreadsheet format. Photographs are in jpeg format.

History /

Biographical:

In 2005 the Brandon University Field School was held at both the Crepeele and Graham sites in the Crepeele locale. Denise Ens instructed the school and James Graham was teaching assistant.

Nine units were excavated (XU10-16 & 20, 21). Units 20 & 21 were referred to as Meadow in the notes but are considered part of the larger site based on recoveries

Faunal (animal bone), lithics, fire cracked rock, diagnostic lithics and ceramics were recovered from the site.

Scope and Content:

Sub-sub-sub series contains: Summary information of field methodology, number and co-ordinates of excavations, personnel and their staff position.

Name Access: Crepeele site 2005 - summary information

Subject Access: Archaeology
Crepeele locale
Crepeele site DiMe-29
Crepeele site 2005

Documents

ARCH 1.1 Crepeele Locale
1.2 Crepeele Site DiMe-29
1.2.5 Crepeele 2005
1.2.5.1 Summary Information

In 2005 the Brandon University Field School was held at both the Crepeele and Graham sites in the Crepeele locale.
At the Crepeele site nine units were excavated. Denise Ens instructed the school and James Graham was teaching assistant.

XU 10-16 and XU 20 & 21 excavations

Excavation Unit	Latitude Co-ordinates	Excavator
XU 10	52°42'N	James Ens
XU 11	52°42'N	James Ens
XU 12	52°42'N	James Ens
XU 13	52°42'N	James Ens
XU 14	52°42'N	James Ens
XU 15	52°42'N	James Ens
XU 16	52°42'N	James Ens
XU 20	52°42'N	James Ens
XU 21	52°42'N	James Ens

XU 20 & 21 was referred to as Meadow in the notes but is considered part of the larger site based on recoveries.

1.2.3.1_C05_summary.pdf

Read PDF

Download PDF



Crepeele site 2008 - summary information

<http://archives.brandonu.ca/en/permalink/descriptions11773>

Part Of: RG 7 Beverley Nicholson fonds

Description Level: sub sub sub series

Series Number: 1.2.5.1

Accession Number: 1-2010

GMD: multiple media

Date Range: 2008

Material Details: Field journals have been scanned in multi-page PDF files. Artifact catalogues are PDF files in spreadsheet format. Photographs are in jpeg format.

History /
Biographical:

The Crepeelee site was identified from the results of the Casselman survey and excavated in 2003, 2004, 2005 and 2007.

In 2005 and 2007 the Brandon University Archaeology Field School was held at the Crepeelee site in the Crepeelee locale.

In 2008 a small crew returned to the site to gather further samples and verify profiles. Three units (XU 50, 51 and 52) were excavated with faunal (animal bone), lithics, fire cracked rock, diagnostic lithics and ceramics recovered from the site. There are 455 records in the artifact catalogue.

Scope and Content:

Sub-sub-sub series contains: Summary information of field methodology, number and co-ordinates of excavations, personnel and their staff position.

Name Access: Crepeelee site 2008 - summary information

Subject Access: Archaeology
Crepeelee locale
Crepeelee site DiMe-29
Crepeelee site 2008

Documents

ABC 10.1 Crepeelee Locale
1.2.1 Crepeelee Site DiMe-29
1.2.2 Crepeelee 2008
1.2.2.1 Summary Information
Excavator: Ben Nicholson with Crew of Bill Fay, Andrew Lamb & Kim Thornton
Excavation Unit: 1.2.2.1.1
Unit 50: 1.2.2.1.1.1
Unit 51: 1.2.2.1.1.2
Unit 52: 1.2.2.1.1.3
Gridlines: 100m x 100m, units 1.2.2.1.1.1 & 1.2.2.1.1.2 were also excavated in 2008

1.2.5.1_C08_summary.pdf

Read PDF

Download PDF



Crepeelee site 2007 - field journals

<http://archives.brandonu.ca/en/permalink/descriptions11774>

Part Of: RG 7 Beverley Nicholson fonds
Description Level: sub sub sub series
Series Number: 1.2.4.2
Accession Number: 1-2010
GMD: multiple media
Date Range: 2007
Material Details: Field journals have been scanned in multi-page PDF files.

History /

Biographical:

In 2007 the Brandon University Archaeology Field School was held at the Crepeelee site in the Crepeelee locale. Denise Ens instructed the school with Kate Decter & Jessica MacKenzie assistants.

Seventeen units were excavated XU30 - 46. Faunal (animal bone), lithics, fire cracked rock, diagnostic lithics and ceramics were recovered from the site. There are over 3050 records in the catalogue.

Scope and Content:

Record of daily observations at the site including: excavation methods, items recovered, features, local environment and weather.

Name Access: Crepeelee site 2007 - field journals
Subject Access: Archaeology
Crepeelee locale
Crepeelee site DiMe-29
Crepeelee site 2007



Crepeelee site 2008 - field journals

<http://archives.brandonu.ca/en/permalink/descriptions11808>

Part Of: RG 7 Beverley Nicholson fonds
Description Level: sub sub sub series
Series Number: 1.2.5.2
Accession Number: 1-2010
GMD: multiple media
Date Range: 2007
Material Details: Field journals have been scanned in multi-page PDF files.
History /
Biographical:

The Crepeelee site was identified from the results of the Casselman survey and excavated in 2003, 2004, 2005 and 2007.

In 2008 a small crew under the direction of Bev Nicholson returned to the site to gather further samples and verify profiles. Three units (XU 50, 51 and 52) were excavated. As well the Graham site 2008 was also excavated.

The field journals contain information about both the Crepeelee and Graham sites.

Scope and Content:

Record of daily observations at the site including: excavation methods, items recovered, features, local environment and weather.

Name Access: Crepeelee site 2008 - field journals
Subject Access: Archaeology
Crepeelee locale
Crepeelee site DiMe-29
Crepeelee site 2008



Crepeele site 2007 - summary information

<http://archives.brandonu.ca/en/permalink/descriptions11813>

Part Of: RG 7 Beverley Nicholson fonds

Description Level: sub sub sub series

Series Number: 1.2.4.1

Accession Number: 1-2010

GMD: multiple media

Date Range: 2007

Material Details: Field journals have been scanned in multi-page PDF files. Artifact catalogues are PDF files in spreadsheet format. Photographs are in jpeg format.

History /

Biographical:

In 2007 the Brandon University Field School was held at both the Crepeele site in the Crepeele locale. Denise Ens instructed the school with Jessica McKenzie and Kate Decter as teaching assistants.

Seventeen units were excavated (XU3 - 46). Faunal (animal bone), lithics, fire cracked rock, diagnostic lithics and ceramics were recovered from the site.

Scope and Content:

Sub-sub-sub series contains: Summary information of field methodology, number and co-ordinates of excavations, personnel and their staff position.


Name Access: Crepeele site 2007 - summary information

Subject Access: Archaeology
Crepeele locale
Crepeele site DiMe-29
Crepeele site 2007

Documents

1.2.4.1_C07_summary.pdf

 Read PDF

 Download PDF



Sarah site 2004 - summary information

<http://archives.brandonu.ca/en/permalink/descriptions11856>

Part Of: RG 7 Beverley Nicholson fonds

Description Level: sub sub sub series

Series Number: 1.3.2.1

Accession Number: 1-2010

GMD: multiple media

Date Range: 2004

Material Details: Field journals have been scanned in multi-page PDF files. Artifact catalogues are PDF files in spreadsheet format. Photographs are in jpeg format.

History /

Biographical:

The Sarah site was initially chosen for excavation based on the results of the Casselman survey. The survey recovered significant amounts of faunal remains, some ceramics and lithics from the test pits. Excavations took place in 2003 at the Sarah site DiMe-28.

In 2004 further excavation took place as part of a Brandon University Archaeology Field School. Units 10 to 18 were excavated with Denise Ens as the instructor and James Graham teaching assistant.

Scope and Content:

Sub-sub-sub series contains: Summary information of field methodology, number and co-ordinates of excavations, personnel and their staff position.

Name Access: Sarah site 2004 - summary information

Subject Access: Archaeology
Crepeele locale
Sarah site DiMe-28
Sarah site 2004

Documents

ABR/13.1.1 Crepeele locale
1.3 Sarah DiMe-28
1.3.2.1 Summary Information

In 2004 the Brandon University Field School was held at the Sarah site in the Crepeele locale. Nine units were excavated (10-18-04).

Denise Ens was the instructor and James Graham the Teaching Assistant.

The following units were excavated:

Excavation Unit	Excavator(s)	Recorder
Unit 10	ABR/2004/10	Cathy Patterson
Unit 11	ABR/2004/11	James McCreary
Unit 12	ABR/2004/12	Audrey C. Corney
Unit 13	ABR/2004/13	James Patterson
Unit 14	ABR/2004/14	Eric Enns
Unit 15	ABR/2004/15	Michael Gaudin
Unit 16	ABR/2004/16	Paul Thompson
Unit 17	ABR/2004/17	James Graham, Denise Ens
Unit 18	ABR/2004/18	James Graham, Denise McCreary

1.3.2.1_Sarah04_Summary.pdf

Read PDF

Download PDF



Graham site 2004 - summary information

<http://archives.brandonu.ca/en/permalink/descriptions11888>

Part Of:	RG 7 Beverley Nicholson fonds
Description Level:	sub sub sub series
Series Number:	1.4.1.1
Accession Number:	1-2010
GMD:	multiple media
Date Range:	2004
Material Details:	Field journals have been scanned in multi-page PDF files. Artifact catalogues are PDF files in spreadsheet format. Photographs are in jpeg format.

History /

Biographical:

The Graham site was initially designated as a separate site early in the testing of the Crepeele locale due to what appeared to be a distinction between Early and Late Woodland ceramics. Subsequent testing has shown that this distinction was premature and that the cultural mosaic represented in the western section of the Crepeele locale does not readily separate in this manner.

Scope and Content:

Sub-sub-sub series contains: Summary information of field methodology, number and co-ordinates of excavations, personnel and their staff position.

Name Access:	Graham site 2004 - summary information
Subject Access:	Archaeology Crepeele locale Graham site DiMe-30 Graham site 2004

Documents

ARCH 1.1 Crepeele Locale
1.4 Graham site 2004-20
1.4.1 Graham 2004
1.4.1.1 Summary Information
Core Unit: Thomas Phipps, Cree-Wapiti Culture and Andrew Richards
Graham Site 1.4.1.1
Excavation Unit: Catalogue Coordinates
Site 1.4.1.1
Excavation: Thomas Phipps & Andrew Richards

The units 9 and 11 were excavated with the Crepeele site in 2004 and were reorganized in the Graham site 2004-20 keeping the same unit numbers.

1.4.1.1_Graham04_Summary.pdf

Read PDF

Download PDF



Graham site 2004 - field journals

<http://archives.brandonu.ca/en/permalink/descriptions11890>

Part Of: RG 7 Beverley Nicholson fonds
Description Level: sub sub sub series
Series Number: 1.4.1.2
Accession Number: 1-2010
GMD: multiple media
Date Range: 2004
Material Details: Field journals have been scanned in multi-page PDF files.
History /
Biographical:

Graham units 9 and 14 were excavated with the Crepeele site in 2004 and were reassigned to the Graham site DiMe-30 keeping the same unit numbers.

Field journals from 2004 contain notes concerning the Graham, Sarah and Atkinson sites. The relevant page numbers are noted.

Scope and Content:

Record of daily observations at the site including: excavation methods, items recovered, features, local environment and weather.

Name Access: Graham site 2004 - field journals
Subject Access: Archaeology
Crepeele locale
Graham site DiMe-30
Graham site 2004



Graham site 2005 - summary information

<http://archives.brandonu.ca/en/permalink/descriptions11905>

Part Of: RG 7 Beverley Nicholson fonds
Description Level: sub sub sub series
Series Number: 1.4.2.1
Accession Number: 1-2010
GMD: multiple media
Date Range: 2005
Material Details: Field journals have been scanned in multi-page PDF files. Artifact catalogues are PDF files in spreadsheet format. Photographs are in jpeg format.

History /

Biographical:

The Graham site is located south of the Crepeelee site. Due to the close proximity the Graham and Crepeelee sites have both been the site of the Brandon University Archaeological Field School.

In 2005 both sites were excavated as part of the Field School experience instructed by Denise Ens with teaching assistant James Graham Six units (XU 1-6) were excavated at the Graham site.

Recoveries included faunal (mostly bison), lithics (points, scrapers), and ceramics.

Scope and Content:

Sub-sub-sub series contains: Summary information of field methodology, number and co-ordinates of excavations, personnel and their staff position.

Name Access: Graham site 2005 - summary information

Subject Access: Archaeology
 Crepeelee locale
 Graham site DiMe-30
 Graham site 2005

Documents

ABCH 1.1 Crepeelee Locale
1.2 Graham Site 2005 - 207
1.4.2.1 Graham 2005
1.4.2.1 Summary Information

Field School: Instructor Denise Ens, Assistant James Graham

Excavation Unit	Cartographic Coordinates	Excavator
XU 1	1100000N	Michael Gaudette
XU 2	1100000N	Michael Gaudette
XU 3	1100000N	Michael Gaudette
XU 4	1100000N	James Graham
XU 5	1100000N	James Graham
XU 6	1100000N	James Graham

1.4.2.1_Graham05_Summary.pdf

 Read PDF

 Download PDF



Graham site 2005 - field journals

<http://archives.brandonu.ca/en/permalink/descriptions11906>

Part Of: RG 7 Beverley Nicholson fonds
Description Level: sub sub sub series
Series Number: 1.4.2.2
Accession Number: 1-2010
GMD: multiple media
Date Range: 2005
Material Details: Field journals have been scanned in multi-page PDF files.

History /

Biographical:

The Graham site is located south of the Crepeele site. Due to the close proximity the Graham and Crepeele sites have both been the site of the Brandon University Archaeological Field School.

In 2005 both sites were excavated as part of the Field School experience instructed by Denise Ens with teaching assistant James Graham. Six units (XU 1-6) were excavated at the Graham site.

Field journals from 2005 contain notes concerning the Graham and Crepeele sites.

Scope and Content:

Record of daily observations at the site including: excavation methods, items recovered, features, local environment and weather.

Name Access: Graham site 2005 - field journals
Subject Access: Archaeology
Crepeele locale
Graham site DiMe-30
Graham site 2005



Crepeelee site 2003 - field journals

<http://archives.brandonu.ca/en/permalink/descriptions10217>

Part Of: RG 7 Beverley Nicholson fonds
Description Level: sub sub sub series
Series Number: 1.2.1.2
Accession Number: 1-2010
GMD: multiple media
Date Range: 2003
Material Details: Field journals have been scanned in multi-page PDF files.
History /
Biographical:

The Crepeelee site was excavated in 2003 as Crepeelee 3. Standard archaeological methods were used to excavate the units. Excavation units were initially numbered as units 10, 11, 12 & 13. These numbers have been changed on the catalogue to XU 110 – 113, due to duplication in 2005. Corresponding documents have been changed to reflect the amended excavation unit numbers, however the field journals may contain the initial numbers.

Scope and Content:

Record of daily observations at the site including: excavation methods, items recovered, features, local environment and weather.

Name Access: Crepeelee site 2003 - field journals
Subject Access: Archaeology
Crepeelee locale
Crepeelee site DiMe-29
Crepeelee site 2003



Sarah site 2003 - field journals

<http://archives.brandonu.ca/en/permalink/descriptions11831>

Part Of: RG 7 Beverley Nicholson fonds
Description Level: sub sub sub series
Series Number: 1.3.1.2
Accession Number: 1-2010
GMD: multiple media
Date Range: 2003
Material Details: Field journals have been scanned in multi-page PDF files.
History /
Biographical:

The Sarah site was chosen for excavation based on the results of the Casselman survey. The survey recovered significant amounts of faunal remains, some ceramics and lithics from the test pits. Excavations took place in 2003 at Crepeelee West (Units 1-5) and Crepeelee East (Units 6-9). The site was subsequently renamed the Sarah site DiMe-28.

Field journals from 2003 contain notes concerning the Casselman survey, Crepeelee and Sarah site.

Scope and Content:

Record of daily observations at the site including: excavation methods, items recovered, features, local environment and weather.

Name Access: Sarah 2003 - field journals
Subject Access: Archaeology
Crepeelee locale
Sarah site DiMe-28
Sarah 2003 - field journals



Crepeelee site 2008 - Andrew Lints field journal

<http://archives.brandonu.ca/en/permalink/descriptions11963>

Part Of: RG 7 Beverley Nicholson fonds
Description Level: sub sub sub series
Series Number: 1.2.5.2
File Number: 2
Accession Number: 1-2010
GMD: multiple media
Date Range: 2008
Physical Description: 13 pages
Material Details: Field journals have been scanned in multi-page PDF files.

History /

Biographical:

The Crepeele site was identified from the results of the Casselman survey and excavated in 2003, 2004, 2005 and 2007.

In 2008 a small crew under the direction of Bev Nicholson returned to the site to gather further samples and verify profiles. Three units (XU 50, 51 and 52) were excavated. As well the Graham site 2008 was also excavated.

The field journals contain information about both the Crepeele and Graham sites 2008.

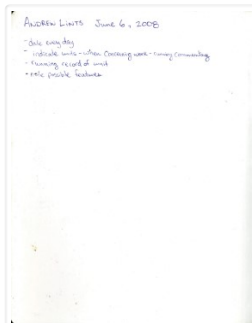
Scope and Content:

Record of daily observations at the site including: excavation methods, items recovered, features, local environment and weather.

Name Access: Crepeele site 2008 - Andrew Lints field journal

Subject Access: Archaeology
Crepeele locale
Crepeele site DiMe-29
Crepeele site 2008

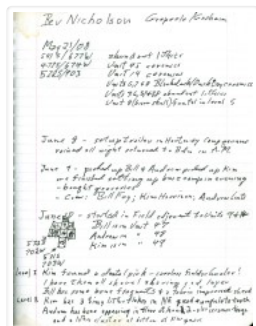
Documents



1.2.5.2.2_C08_ALints.pdf

 Read PDF

 Download PDF



Crepeele site 2008 - Bev Nicholson field journal

<http://archives.brandonu.ca/en/permalink/descriptions11809>

Part Of: RG 7 Beverley Nicholson fonds

Description Level: sub sub sub series

Series Number: 1.2.5.2

File Number: 1

Accession Number: 1-2010

GMD: multiple media

Date Range: 2008
Physical Description: 6 pages
Material Details: Field journals have been scanned in multi-page PDF files.
History /
Biographical:

The Crepeele site was identified from the results of the Casselman survey and excavated in 2003, 2004, 2005 and 2007.

In 2008 a small crew under the direction of Bev Nicholson returned to the site to gather further samples and verify profiles. Three units (XU 50, 51 and 52) were excavated. As well the Graham site 2008 was also excavated.

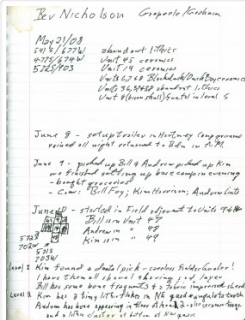
The field journals contain information about both the Crepeele and Graham sites 2008.

Scope and Content:


Record of daily observations at the site including: excavation methods, items recovered, features, local environment and weather.


Name Access: Crepeele site 2008 - Bev Nicholson field journal
Subject Access: Archaeology
Crepeele locale
Crepeele site DiMe-29
Crepeele site 2008

Documents



1.2.5.2.1_C08_BNicholson.pdf

 Read PDF

 Download PDF

Crepeele site 2008 - Bill Foy field journal

<http://archives.brandonu.ca/en/permalink/descriptions11812>

Part Of: RG 7 Beverley Nicholson fonds
Description Level: sub sub sub series
Series Number: 1.2.5.2



File Number: 4
Accession Number: 1-2010
GMD: multiple media
Date Range: 2008
Physical Description: 20 pages
Material Details: Field journals have been scanned in multi-page PDF files.
History /
Biographical:

The Crepeelee site was identified from the results of the Casselman survey and excavated in 2003, 2004, 2005 and 2007.

In 2008 a small crew under the direction of Bev Nicholson returned to the site to gather further samples and verify profiles. Three units (XU 50, 51 and 52) were excavated. As well the Graham site 2008 was also excavated.

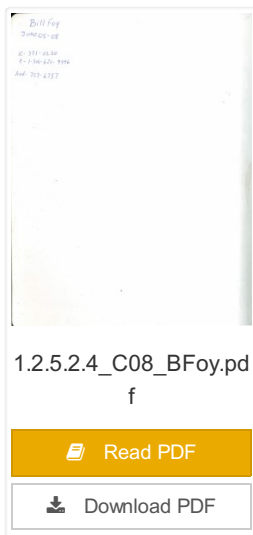
The field journals contain information about both the Crepeelee and Graham sites 2008.

Scope and Content:

Record of daily observations at the site including: excavation methods, items recovered, features, local environment and weather.

Name Access: Crepeelee site 2008 - Bill Foy field journal
Subject Access: Archaeology
Crepeelee locale
Crepeelee site DiMe-29
Crepeelee site 2008

Documents



1.2.5.2.4_C08_BFoy.pdf

 Read PDF

 Download PDF

Crepeelee site 2003 - summary information

<http://archives.brandonu.ca/en/permalink/descriptions11965>



Part Of: RG 7 Beverley Nicholson fonds

Description Level: sub sub sub series

Series Number: 1.2.1.1

Accession Number: 1-2010

GMD: multiple media

Date Range: 2003

Material Details: Field journals have been scanned in multi-page PDF files. Artifact catalogues are PDF files in spreadsheet format. Photographs are in jpeg format.

History /

Biographical:

The Crepeele site was identified from the results of the Casselman survey. The site is located within the Crepeele locale approximately 400 meters to the west of the Sarah site. The units were excavated by Crew Chief James Graham and the crew from the survey.

The Crepeele site was excavated in 2003 as Crepeele 3 with the units numbered as units 10, 11, 12 & 13. These numbers have been changed on the catalogue to XU 110 – 113, due to duplication in 2005. Corresponding documents have been changed but there may be some reference to the initial numbers in the field journals.

The artifacts recovered from these four excavations are faunal (animal bone), mainly bison, lithic materials (stone tools and flakes) and some ceramic (pottery). The artifact catalogue has over 600 records.

Scope and Content:

Sub-sub-sub series contains: Summary information of field methodology, number and co-ordinates of excavations, personnel and their staff position; Field journals are daily records of recoveries, features and activities at the site; Site records include excavation level and unit summaries, feature sheets, profiles; sample records and maps; Artifact catalogues are lists and identifications of all artifacts recovered; Photographs are of excavation units, features, the landscape and personnel.

Name Access: Crepeele site 2003 - summary information

Subject Access: Archaeology
Crepeele locale
Crepeele site DiMe-29
Crepeele site 2003
Crepeele site 2003 - summary information

Documents

1.2.1.1_
C03_summary.pdf

Read PDF

 Download PDF