

S. J. McKee Archives



Brandon University campus

<http://archives.brandonu.ca/en/permalink/descriptions7998>

Part Of: Brandon University Photograph collection

Description Level: Item

Series Number: 2.1

Item Number: BUPC 2.1.64

GMD: graphic

Date Range: c. 1993

Physical Description: 6" x 4" (colour)

Scope and Content:

Photograph was taken from the roof of the Library and shows the walkway and flower bed on the southeast corner of the George T. Richardson Centre. The Physical Plant H-Hut is visible in the top right hand corner.

Subject Access: campus photographs

Images





John R. Brodie Science Centre flower beds

<http://archives.brandonu.ca/en/permalink/descriptions3019>

Part Of: Brandon University Photograph collection

Description Level: Item

Series Number: 2.1

Item Number: BUPC 2.1.40

GMD: graphic

Date Range: May 1978

Physical Description: 5" x 3.5"

Scope and Content:

Photograph shows a number of the flower beds located on the north side of the John R. Brodie Science Centre.

Subject Access: campus photographs



Campus map sign

<http://archives.brandonu.ca/en/permalink/descriptions3025>

Part Of: Brandon University Photograph collection

Description Level: Item

Series Number: 2.1

Item Number: BUPC 2.1.41

GMD: graphic

Date Range: May 1978

Physical Description: 5" x 3.5" (colour)

Scope and Content:

Photograph shows a sign bearing a campus map. The sign was located at the north entrance to the driveway.

Subject Access: campus photographs

Images





John R. Brodie Science Centre flower beds

<http://archives.brunu.ca/en/permalink/descriptions3026>

Part Of: Brandon University Photograph collection

Description Level: Item

Series Number: 2.1

Item Number: BUPC 2.1.42

GMD: graphic

Date Range: May 1978

Physical Description: 5" x 3.5" (colour)

Scope and Content:

Photograph shows a number of flower beds located on the north side of the John R. Brodie Science Centre.

Subject Access: campus photographs

Images





Aerial view - Brandon University campus

<http://archives.brandonu.ca/en/permalink/descriptions7989>

Part Of: Brandon University Photograph collection
Creator: Photograph commissioned by Brandon University and taken by Yourview Aerial Scenics Ltd.

Description Level: Item
Series Number: 2.1
Item Number: BUPC 2.1.55
GMD: graphic
Date Range: c. 2000
Physical Description: 6" x 4" (colour)

Scope and Content:

View is southwest from approximately 16th Street between Princess and Rosser Avenues.
Photograph shows the Brandon University campus, as well as surrounding residential blocks, including Flemming, J.R. Reid and Vincent Massey schools.

Subject Access: aerial photographs
campus photographs
campus buildings
Brandon streets

Images





Aerial view - Brandon University campus

<http://archives.brandonu.ca/en/permalink/descriptions7990>

Part Of: Brandon University Photograph collection
Creator: Photograph commissioned by Brandon University and taken by Yourview Aerial Scenics Ltd.

Description Level: Item
Series Number: 2.1
Item Number: BUPC 2.1.56
GMD: graphic
Date Range: c. 2000
Physical Description: 6" x 4" (colour)

Scope and Content:

View is west southwest from approximately 16th Street between Princess and Lorne Avenues. Photograph shows the Brandon University campus, as well as surrounding residential blocks between 16th and 23rd Streets, Princess and Louise Avenues..

Subject Access: aerial photographs
campus photographs
campus buildings
Brandon streets

Images





Aerial view - Brandon University campus

<http://archives.brandonu.ca/en/permalink/descriptions7991>

Part Of: Brandon University Photograph collection
Creator: Photograph commissioned by Brandon University and taken by Yourview Aerial Scenics Ltd.

Description Level: Item
Series Number: 2.1
Item Number: BUPC 2.1.57
GMD: graphic
Date Range: c. 2000
Physical Description: 6" x 4" (colour)

Scope and Content:

View is west from approximately 17th Street between Lorne and Louise Avenues. Photograph shows a portion of the Brandon University campus (excluding the Education Building and anything north of it), as well as surrounding residential blocks from approximately 17th Street to 22nd Street.

Subject Access: aerial photographs
campus photographs
campus buildings
Brandon streets

Images





Aerial view - Brandon University campus

<http://archives.brandonu.ca/en/permalink/descriptions7992>

Part Of: Brandon University Photograph collection

Description Level: Item

Series Number: 2.1

Item Number: BUPC 2.1.58

GMD: graphic

Date Range: c. 1990

Physical Description: 5" x 3.5" (colour)

Scope and Content:

View is west northwest from approximately 16th Street and Louise Avenue. Photograph shows the Brandon University campus, prior to the Library Extension, and a large portion of the city to the west of the campus.

Subject Access: aerial photographs
campus photographs
campus buildings
Brandon streets

Images





Aerial view - Brandon University campus

<http://archives.brandonu.ca/en/permalink/descriptions7993>

Part Of: Brandon University Photograph collection

Description Level: Item

Series Number: 2.1

Item Number: BUPC 2.1.59

GMD: graphic

Date Range: c. 1990

Physical Description: 5" x 3.5" (colour)

Scope and Content:

View is northwest from approximately 16th Street and Louise Avenue. Photograph shows the Brandon University campus, prior to the Library Extension, and a large portion of the city to the west of the campus.

Subject Access: aerial photographs
campus photographs
campus buildings
Brandon streets



Aerial view: Brandon College

<http://archives.brandonu.ca/en/permalink/descriptions594>

Part Of: Brandon University Photograph collection

Description Level: Item

Series Number: 2.1

Item Number: BUPC 2.1.2

GMD: graphic

Date Range: [fall 1964?]

Physical Description: 5" x 4" (b/w)

Scope and Content:

Brandon College looking south from 19th Street. Photograph was taken after Flora Cowan Hall was built but before construction of the Education Building.

Subject Access: aerial photographs
campus photographs
campus buildings
Brandon streets

Images





Aerial view - Brandon College looking southwest

<http://archives.brandonu.ca/en/permalink/descriptions601>

Part Of: Brandon University Photograph collection

Description Level: Item

Series Number: 2.1

Item Number: BUFC 2.1.8

GMD: graphic

Date Range: [1963-1966]

Physical Description: 5" x 4" (b/w)

Scope and Content:

Image shows the Brandon College campus from 17th Street looking southwest. The photo was taken after the completion of the original Music Building in 1963, but construction of the Education Building. Also visible are a number of properties on the 200 block of 18th Street and the 200 block of 20th Street.

Subject Access: aerial photographs
campus photographs
campus buildings
Brandon streets

Images





Aerial view: Brandon College from 23rd Street

<http://archives.brandonu.ca/en/permalink/descriptions602>

Part Of: Brandon University Photograph collection

Description Level: Item

Series Number: 2.1

Item Number: BUPC 2.1.9

GMD: graphic

Date Range: [1963-1966]

Physical Description: 5" x 4" (b/w)

Scope and Content:

Image is looking east northeast from approximately the 300 block of 23rd Street between Lorne and Louise Avenues. Photograph shows the Brandon College campus after the opening of the original Music Building in 1963, but before the construction of the Education Building in 1966. A number of house on the 300 blocks of 22nd and 21st Streets are visible in the foreground, with the A.E. McKenzie Seed Co., the Prince Edward Hotel and various grain elevators on the horizon.

Subject Access: **aerial photographs**
campus photographs
campus buildings
Brandon streets
Grain elevators

Images





House removal

<http://archives.brandonu.ca/en/permalink/descriptions7994>

Part Of: Brandon University Photograph collection

Description Level: Item

Series Number: 2.1

Item Number: BUPC 2.1.60

GMD: graphic

Date Range: c. 1985

Physical Description: 5" x 3.5" (colour)

Scope and Content:

Photograph shows the removal of one of the houses formerly located on 20th Street between Louise and Princess Avenues. The houses on those blocks were removed to create parking lots for the University. A Fed Zavislak Ltd. Well Drilling & Trucking pickup truck is visible at the curb.

Subject Access: campus photographs

Brandon streets

Images





House removal

<http://archives.brandonu.ca/en/permalink/descriptions7995>

Part Of: Brandon University Photograph collection

Description Level: Item

Series Number: 2.1

Item Number: BUPC 2.1.61

GMD: graphic

Date Range: c. 1985

Physical Description: 5" x 3.5" (colour)

Scope and Content:

Photograph shows the removal of one of the houses formerly located on 20th Street between Louise and Princess Avenues. The houses on those blocks were removed to create parking lots for the University.

Subject Access: campus photographs

Brandon streets

Images





Brandon University campus

<http://archives.brandonu.ca/en/permalink/descriptions7999>

Part Of: Brandon University Photograph collection

Description Level: Item

Series Number: 2.1

Item Number: BUPC 2.1.65

GMD: graphic

Date Range: c. 1993

Physical Description: 4" x 6" (colour)

Scope and Content:

View is southwest from the roof of the George T. Richardson Centre. Photograph shows the curved glass wall of the John E. Robbins Library, the walkway between the Library and the Dining Hall, the Dining Hall and Darrach Hall.

Subject Access: campus photographs
campus buildings

Images





Brandon University campus construction

<http://archives.brandonu.ca/en/permalink/descriptions8007>

Part Of: Brandon University Photograph collection

Description Level: Item

Series Number: 2.1

Item Number: BUPC 2.1.73

GMD: graphic

Date Range: c. 1996

Physical Description: 6" x 4" (colour)

Scope and Content:

View is southeast from the roof of Clark Hall. Photograph shows some of the scaffolding and materials, as well as the construction trailer (Bird Construction) located on the driveway during the restoration of Clark Hall and the Brandon College Building.

Subject Access: campus photographs

campus construction

Images





Brandon University campus construction

<http://archives.brandonu.ca/en/permalink/descriptions8008>

Part Of: Brandon University Photograph collection

Description Level: Item

Series Number: 2.1

Item Number: BUPC 2.1.74

GMD: graphic

Date Range: c. 1996

Physical Description: 6" x 4" (colour)

Scope and Content:

View is southwest from Clark Hall. Photograph shows the construction of the foundation of the extension of Clark Hall and various construction materials located in the courtyard.

Subject Access: campus photographs

campus construction

Images





Brandon University campus construction

<http://archives.brandonu.ca/en/permalink/descriptions8009>

Part Of: Brandon University Photograph collection

Description Level: Item

Series Number: 2.1

Item Number: BUPC 2.1.75

GMD: graphic

Date Range: c. 1996

Physical Description: 6" x 4" (colour)

Scope and Content:

View is west from Clark Hall. Photograph shows the construction of the foundation of the extension of Clark Hall.

Subject Access: campus photographs

campus construction

Images





Brandon University campus construction

<http://archives.brandonu.ca/en/permalink/descriptions8013>

Part Of: Brandon University Photograph collection

Description Level: Item

Series Number: 2.1

Item Number: BUPC 2.1.79

GMD: graphic

Date Range: c. 1996

Physical Description: 4" x 6" (colour)

Scope and Content:

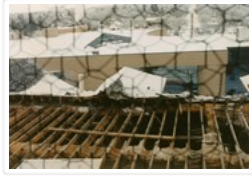
View is north from the courtyard looking underneath the skywalk. Photograph shows the grading of the road between the Clark Hall extension and the A.E. McKenzie Building.

Subject Access: campus photographs

campus construction

Images





Brandon University campus construction

<http://archives.brandonu.ca/en/permalink/descriptions8015>

Part Of: Brandon University Photograph collection

Description Level: Item

Series Number: 2.1

Item Number: BUPC 2.1.81

GMD: graphic

Date Range: c. 1996

Physical Description: 6" x 4" (colour)

Scope and Content:

View is west from the roof of the Brandon College Building. Photograph was taken through wire fencing and shows roof beams during construction on the roof of the Brandon College Building during winter. Part of the George T. Richardson Centre and the second steam plant are visible in the background, as well as a few houses.

Subject Access: campus photographs

campus construction

Images

