



<http://archives.bradoniu.ca/en/permalink/descriptions12640>

Part Of: RG 7 Beverley Nicholson fonds

Description Level: sub sub sub series

Series Number: 3.9.1.1

Accession Number: 1-2010

GMD: multiple media

Date Range: 1988

Material Details:	Field journals have been scanned in multi-page PDF files. Artifact catalogues are PDF files in spreadsheet format. Photographs are in jpeg format.
-------------------	--

History /

Biographical:

Large scale excavations of four block sites took place in 1988 under the direction of Bev Nicholson with Ian Kuijt as crew chief. Block H consisted of eight excavation units.

Scope and Content:

Sub-sub-sub series contains: Summary information of field methodology, number and coordinates of excavations, personnel and their staff position.

Name Access: Lovstrom Block H 1988 - site co-ordinates

Subject Access: Archaeology
Lovstrom locale
Lovstrom Block H

Documents

 Read PDF

Download PDF



Lovstrom Block E 1991 - site co-ordinates

<http://archives.brandonu.ca/en/permalink/descriptions12656>

Part Of: RG 7 Beverley Nicholson fonds

Description Level: sub sub sub series

Series Number: 3.6.3.1

Accession Number: 1-2010

GMD: multiple media

Date Range: 1991

Material Details: Field journals have been scanned in multi-page PDF files. Artifact catalogues are PDF files in spreadsheet format. Photographs are in jpeg format.

History /

Biographical:

Large scale excavations of two block sites took place in 1988 under the direction of Bev Nicholson with Brett Waddell as crew chief and Theresa Hill as assistant. Block E consisted of 10 additional excavation units.

Scope and Content:


Sub-sub-sub series contains: Summary information of field methodology, number and co-ordinates of excavations, personnel and their staff position.


Name Access: Lovstrom Block E 1991 - site co-ordinates

Subject Access: Archaeology
Lovstrom locale
Lovstrom Block E

Documents

3.6.3.1_Summary.pdf

 Read PDF

 Download PDF



Lovstrom Block H 1991 - site co-ordinates

<http://archives.brandonu.ca/en/permalink/descriptions12672>

Part Of: RG 7 Beverley Nicholson fonds

Description Level: sub sub sub series

Series Number: 3.9.2.1

Accession Number: 1-2010

GMD: multiple media

Date Range: 1991

Material Details: Field journals have been scanned in multi-page PDF files. Artifact catalogues are PDF files in spreadsheet format. Photographs are in jpeg format.

History /

Biographical:

Large scale excavations of two block sites took place in 1988 under the direction of Bev Nicholson with Brett Waddell as crew chief and Theresa Hill as assistant. Block H consisted of nine additional excavation units.

Scope and Content:

Sub-sub-sub series contains: Summary information of field methodology, number and co-ordinates of excavations, personnel and their staff position.

Name Access: Lovstrom Block H 1991 - site co-ordinates

Subject Access: Archaeology
Lovstrom locale
Lovstrom Block H

Documents

3.9.2.1_Sum.pdf

 Read PDF

 Download PDF



Henry Hlady collection

<http://archives.brandonu.ca/en/permalink/descriptions12706>

Part Of: RG 5 Western Manitoba Manuscript Collection

Description Level: Collection
Accession Number: 13-2011
GMD: multiple media
Date Range: 1916 - 2010; predominant 1930 -1942
Physical Description: 0.5 cm textual records
9 photographs (b&w)
2 negatives
Physical Condition: Good

History /

Biographical:

Henry Hlady was born in Brandon, Manitoba on October 30, 1916, the son of Philip and Katherine Hlady, both natives of Austria. He was educated in public schools in Brandon. During the Great Depression, Hlady spent time - October 1933 to May 1934 - in work camps for the single unemployed in Riding Mountain cutting down tress and clearing bush. He sought to join the Canadian Army in 1942 but was rejected for medical reasons.

Hlady apprenticed as a carpenter with Sprattling and spent many years with Magnacca Construction before becoming a private builder. He retired in 1984 from the Manitoba Housing and Renewal Corporation where he was employed as a building inspector.

Hlady was a life-long Liberal in politics and an active trapshooter. In 200 he was honoured by the Brandon Gun Club and made a Life Member of the American Trapshooters' Association for his dedication to the sport. Hlady was also active with the West End Community Centre and a member of the Westoba Credit Union Board of Directors.

Hlady married Mary Plowman in 1943 or 1944. Together they had three children: Ronald, Judith and Lynda. Henry Hlady died on April 8, 2010 in Brandon, MB.

Custodial History:

Records were in Henry Hlady's possession until his death when they passed to his wife Mary Hlady who donated them to the McKee Archives. Two photographs were in the possession of Hlady's daughter Judith Grievson prior to their donation to the Archives.

Scope and Content:

Collection consists of various personal documents concerning Henry Hlady including a birth certificate (copy) and certificate of baptism (copy), communion certificate, public school records, certificate of medical rejection for service in the Canadian Army, newspaper clippings, obituary, and funeral program. Collection also includes documents and photographs concerning Hlady's time spent - October 1933 to May 1934 - in federal government work camps for single unemployed men in Riding Mountain, including a handwritten letter to E.S. Stozek (dated February 2008) about Hlady's memories of his time at Camp Seven and the other relief camps in the area.

Notes: Description by Tom Mitchell and Christy Henry.
Name Access: Riding Mountain
Camp Seven
Subject Access: Great Depression
work camps
Storage Location: 2011 accessions

Cedric Vendyback collection



<http://archives.brandonu.ca/en/permalink/descriptions12708>

Part Of: RG 6 Brandon University fonds
Description Level: Collection
Accession Number: 16-2011
10-2012
GMD: multiple media
Date Range: 1972-1978
Physical Description: 23 photographs (b/w)
140 photographs (color)
playbills and newspaper clippings

History /

Biographical:

Cedric Vendyback was born August 28, 1923 in Leeds, Yorkshire, England and was educated at Harehills Council School till the age of fourteen - then becoming a labourer. At the outbreak of World War II, he educated himself for aircrew duties and in 1942 came to Canada where he was trained as a fighter pilot and was commissioned as an officer in the Royal Air Force until demonbilisation in 1946. He flew as a Reservist pilot from 1948 to 1968.

After Training College, Vendyback became a teacher in 1948 and in 1953 began empirical training with Alex Baron as an actor and director until becoming appointed as Associate of the Drama Board, later a Licentiate of The Royal Academy of Music and Dramatic Arts. In 1963, he was elected a Member of the Guild of Drama Adjudicators.

In 1971, he was selected for and offered a position as a professor at Brandon University where he opened a new drama department in January 1972.

Vendyback retired in 1992 and currently (June 2012) lives in Kelowna, B.C., where he works as a free-lance director and lecturer.

Custodial History:

Records were in the possession of Cedric Vendyback from their creation until he donated them to the McKee Archives in 2011 and 2012.

Scope and Content:

Collection consists of records related to the activities of the Brandon University Drama Society (BUDS) and the Brandon University Drama Department collected by Cedric Vendyback during his years as head of the department. The Society performed plays in the then Drama Building, the J.R.C. Evans Lecture Theatre and the Westman Centennial Auditorium.

Accession 16-2011 (1972-1978) consists of a photograph album of photographs, playbills and related newspaper clippings for Brandon University Drama Society productions staged between 1972 and 1978.

Accession 10-2012 (1972-1985) consists of: production reviews from various newspapers and playbills for BUDS productions; a historical fact sheet provided by the donor regarding the Drama Department's service to the community; student evaluation extracts; and the course description for Play Production.

Notes: History/Bio provided by Cedric Vendyback. Description by Christy Henry.
Storage Location: 2011 accessions
Related Material: Brandon University Drama Society (RG 6, 7.1.15)



Margaret Menzies collection

<http://archives.brandonu.ca/en/permalink/descriptions12723>

Part Of: MG 4 Brandon University Students
Description Level: Collection
Accession Number: 13-2012
GMD: multiple media
Date Range: 1959-2007; predominant 1983-2001
Physical Description: 18 cm textual records
1 photograph

History /

Biographical:

Margaret Menzies was born on July 30th, 1920, at a family farm located in Oakburn, Manitoba. She grew up on the family farm and attended school in both Oakburn and Shoal Lake. She married Donald Menzies on June 4th, 1941. Together they had four children. In 1959, the family moved to Brandon, Manitoba, where they lived for the rest of their lives.

Margaret Menzies was a longtime and active member of the International Toastmistress Club (ITC), and was also involved in the Consumers Association of Canada, Seniors for Seniors, as well as being a member of the Liberal Party of Canada and the Central United Church. Menzies did not graduate from high school in her early years, but managed to continue her education and receive a bachelor of arts degree from Brandon University at the age of 70.

Margaret Menzies passed away on June 9th, 2012.

Custodial History:

Records in the collection were brought to the S.J McKee Archives on July 13, 2012, by Gerald Brown, on behalf of the family of Margaret Menzies.

Scope and Content:

Collection contains of two scrapbooks created by Margaret Menzies. The scrapbooks contain various cards, itinerary's, and other documents associated with Menzies' membership in the International Toastmistress Club. The items in the scrapbooks date from the mid 1980's to the late 1990's.

Also included in the collection are four local history books. The first is a 100 year history of the town of Oakburn, Manitoba, from 1870 to 1970, published during celebrations of Manitoba's centenary in 1970. Next is a book about the history of the town of Shoal Lake, Manitoba, which was published in 1959 on the 50th anniversary of the founding of the town of Shoal Lake in 1909. The last two books are the first and second volumes of Ripples on the Lake, which cover the history of the Shoal Lake municipality from 1884. The first volume covers the first 100 years of the history of the Shoal Lake region, being published in 1984. The second volume was published in 2007, covering the history of Shoal Lake since 1984, as well as including new information that was not published in the 1984 version of the book.

Finally, the collection contains one photograph of Margaret Menzies receiving her bachelor of arts degree from Peter Hordern, dean of arts of Brandon University.

Notes: Biographical information provided by obituary entry in the Brandon Sun, June 16, 2012. Description by Tyler Warren (October 2012).

Name Access: Shoal Lake
Oakburn
International Toastmistress Club
Urban Acres Toastmistress Club

Subject Access: women's organizations
 public relations
 Leadership
 communication
 local histories
Storage Range: 2012 accessions
Related Material: International Toastmistress Club-Land O' Lakes Region fonds (15-2002)



Dorothy Cox collection

<http://archives.brandonu.ca/en/permalink/descriptions12724>

Part Of: RG 5 Western Manitoba Manuscript Collection
Description Level: Collection
Accession Number: 11-2012
GMD: multiple media
Date Range: 1878-1970
Physical Description: 17 cm textual records
 4 color photographs
Physical Condition: Cover of Young School minute book is moderately damaged, but pages
 are in good condition with only minor water damage and a few ripped
 pages.

History /

Biographical:

Dorothy Cox (nee Frost) moved from Elm Creek to Justice in 1946 to work as a schoolteacher. In 1948, she married Laval Cox and together they had four children: Larry, Herd, Rosalie and Heather.

In 1949, Dorothy and Laval purchased Gibb Gillespie's PSV business and began hauling grain, cattle and agricultural equipment. Dorothy went back to teaching in 1959, first at Justice and then Elton Collegiate. After retiring from teaching in 1978, Dorothy started a greenhouse, which operated for 21 years.

All six members of the Cox family were active in community events and organizations. Dorothy was involved in establishing the baby band in 1951; her sons Larry and Herb were members. Along with Laval, Dorothy was a leader of the Cubs in 1955-1956 and again in 1958-1959. Laval was the leader of the local hockey club in 1958, and of a bible study group in 1960. Larry, Herb and Rosalie were avid skaters in 1960-64. Heather and Rosalie were enrolled in senior grades of Sunday school in 1970.

Custodial History:

Records were collected by Dorothy Cox, a resident of Justice, over a number of years. She donated them to the McKee Archives on April 4, 2012.

Scope and Content:

Collection consists of records related to the history of the Justice district. It includes a history of the Justice Church (1910-1970); minute and expense books for the Justice Hockey Club (1949-1966); a minute and expense book for Young Protestant School (1884-1898); a copy of the Justice 100th Anniversary community history (2009); and four color photographs of Justice Church.

Notes:	History/Bio information taken from the content of the collection. Description by James Heaman (2012).
Name Access:	Justice, MB
Subject Access:	churches local histories Hockey
Repro Restriction:	Church photos taken in 1970 are subject to Canadian copyright restrictions, which researchers are required to comply with.
Related Material:	Lawrence Stuckey fonds 1-2002 (photographs of Justice school, church, elevator and houses)



Eckhardt-Gramatté National Music Competition for the Performance of Contemporary Music collection

<http://archives.brandonu.ca/en/permalink/descriptions12726>

Part Of:	RG 5 Western Manitoba Manuscript Collection
Description Level:	Collection
Accession Number:	16-2012
GMD:	multiple media
Date Range:	1976-2011
Physical Description:	25 cm textual records 43 posters 34 event programs approximately 9 photographs

History /

Biographical:

The Eckhardt-Gramatté National Music Competition (commonly called the E-Gré Competition) is the most important annual contemporary music competition for exceptional emerging Canadian performing artists in piano, voice, and strings. Since 1976, the E-Gré has promoted the performance of Canadian and contemporary music of the 20th and 21st centuries and has commissioned 31 new works by leading Canadian composers. The S.C. Eckhardt-Gramatté Competition received its letters patent in 1974 and its legal incorporation in 1979. The inaugural competition was held in 1976 and continues to be held annually at Brandon University. The competition has undergone a few name changes since its inception. For the 8th annual event of the competition the name changed to the Eckhardt-Gramatté National Music Competition for the Performance of Canadian music. Prior to the 27th competition, the event listed both contemporary music as well as Canadian music. The competition is administered by a board and artistic director.

Custodial History:

The records were held by the Eckhardt-Gramatté competition until their donation to the McKee Archives in the summer of 2010 by Pat Carrabré, President of the Eckhardt-Gramatté Competition Board.

Scope and Content:

Collection consists of records created and collected by the Eckhardt-Gramatté committee in the course of holding the competition each year. The records are related to the promotion and administration of the event and the annual award winners. Items include: legal documentation, including the Certificate of Revival and the incorporation documents for the Eckhardt-Gramatté Competition; press files (1976-1979, 1980-1983, 1984-1987), which include newspaper clippings and photocopies of newspaper coverage, press releases on performance orders/show times, and promotional materials for individual performer; 30 award winners' files containing promotional materials and press clippings related to the award winner; event programs; and promotional posters for every year (except 1979).

Notes:

History/Bio information taken from the E-Gré national music website available at: <http://e-gre.ca>. (Date accessed October 26, 2012).
Description by Steve Dueck (October 2012).

Name Access:	Brandon Univeristy School of Music Westman Centennial Auditorium S.C. Eckhardt-Gramatté Ferdinand Eckhardt David Swan Gwen Hoebig Jackie Parker Nancy Herbison Louise Bessette Annalee Patipatanakoon Debra Parker Jamie Parker Joanne Opgenorth Ingrid Attrot Lesley Robertson Janaice Girard Jane Leibel Krista Buckland Audrey Andrist Elizabeth Pomes Bridget Hunt Bang Lang Do Heather Pawsey Jasper Wood Krystyna Tucka-Gaweda Vilma Vitols Elissa Lee Heather Schmidt Nikki Einfeld Kerry DuWors Lana Henschell Su Jeon Kristin Mueller-Heaslip
Subject Access:	music performing arts performing artists music competitions music festivals
Repro Restriction:	Photographs in the collection are covered by Canadian copyright law. Researchers are responsible to honour appropriate legislation.
Language Note:	Some posters contain French.
Storage Location:	2012 accessions

Related Material:

Media Kit for the 10th annual competition can be found in the Dr. J.R.C. Evans

collection at the S.J McKee Archives (accession number: 7-2004). All listings below can also be found at S.J. McKee Archives at Brandon University: Francis Chaplin collection: Dean of Music: School of Music: Eckhardt-Gramatté: trio for violin, violoncello and piano (accession number: 13-2008): Ferdinand Eckhardt: W.M.C.A Convocation (Fall 1990), Sophie Carmen Eckhardt-Grammatté: W.M.C.A Convocation (Fall 1990) #14: W.M.C.A Convocation (Fall 1990) #15: W.M.C.A Convocation (Fall 1990) #16: W.M.C.A Convocation (Fall 1990) #17: Convocation (c. 1990): W.M.C.A Convocation (Fall 1990) # 19: W.M.C.A Convocation (Fall 1990) #12: W.M.C.A Convocation (Fall 1990) #18: W.M.C.A Convocation (Fall 1990) #13: Lawrence Jones Collection (accession number: 9-2011).

Information regarding Sophie-Carmen Eckhardt-Gramatté (née Fridman) Sonia Eckhardt and Dr Ferdinand Anton Ludwig Eckhardt can be found at the University of Manitoba Archives & Special Collections, the University of Calgary Library, Special Collections, the National Library of Canada and the Winnipeg National Art Gallery Archives.

Arrangement:

Records are organized chronologically within each type of record.



Crepeelee site 2008 - field journals

<http://archives.brandonu.ca/en/permalink/descriptions11808>

Part Of: RG 7 Beverley Nicholson fonds
Description Level: sub sub sub series
Series Number: 1.2.5.2
Accession Number: 1-2010
GMD: multiple media
Date Range: 2007
Material Details: Field journals have been scanned in multi-page PDF files.
History /
Biographical:

The Crepeelee site was identified from the results of the Casselman survey and excavated in 2003, 2004, 2005 and 2007.

In 2008 a small crew under the direction of Bev Nicholson returned to the site to gather further samples and verify profiles. Three units (XU 50, 51 and 52) were excavated. As well the Graham site 2008 was also excavated.

The field journals contain information about both the Crepeelee and Graham sites.

Scope and Content:

Record of daily observations at the site including: excavation methods, items recovered, features, local environment and weather.

Name Access: Crepeelee site 2008 - field journals
Subject Access: Archaeology
Crepeelee locale
Crepeelee site DiMe-29
Crepeelee site 2008



Crepeelee site 2008 - Bev Nicholson field journal

<http://archives.brandonu.ca/en/permalink/descriptions11809>

Part Of: RG 7 Beverley Nicholson fonds
Description Level: sub sub sub series
Series Number: 1.2.5.2
File Number: 1
Accession Number: 1-2010
GMD: multiple media
Date Range: 2008
Physical Description: 6 pages
Material Details: Field journals have been scanned in multi-page PDF files.

History /

Biographical:

The Crepeelee site was identified from the results of the Casselman survey and excavated in 2003, 2004, 2005 and 2007.

In 2008 a small crew under the direction of Bev Nicholson returned to the site to gather further samples and verify profiles. Three units (XU 50, 51 and 52) were excavated. As well the Graham site 2008 was also excavated.

The field journals contain information about both the Crepeelee and Graham sites 2008.

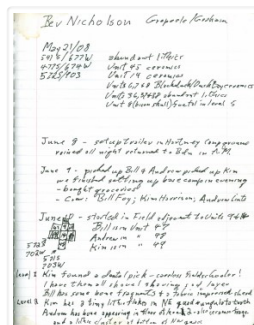
Scope and Content:

Record of daily observations at the site including: excavation methods, items recovered, features, local environment and weather.

Name Access: Crepeelee site 2008 - Bev Nicholson field journal

Subject Access: Archaeology
Crepeelee locale
Crepeelee site DiMe-29
Crepeelee site 2008

Documents



1.2.5.2.1_C08_BNicholson.pdf



Read PDF



Download PDF



Crepeelee site 2008 - Bill Foy field journal

<http://archives.brandonu.ca/en/permalink/descriptions11812>

Part Of: RG 7 Beverley Nicholson fonds

Description Level: sub sub sub series

Series Number: 1.2.5.2

File Number: 4

Accession Number: 1-2010

GMD: multiple media

Date Range: 2008
Physical Description: 20 pages
Material Details: Field journals have been scanned in multi-page PDF files.
History /
Biographical:

The Crepeele site was identified from the results of the Casselman survey and excavated in 2003, 2004, 2005 and 2007.

In 2008 a small crew under the direction of Bev Nicholson returned to the site to gather further samples and verify profiles. Three units (XU 50, 51 and 52) were excavated. As well the Graham site 2008 was also excavated.

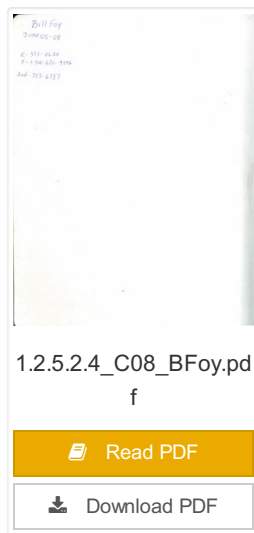
The field journals contain information about both the Crepeele and Graham sites 2008.

Scope and Content:

Record of daily observations at the site including: excavation methods, items recovered, features, local environment and weather.

Name Access: Crepeele site 2008 - Bill Foy field journal
Subject Access: Archaeology
Crepeele locale
Crepeele site DiMe-29
Crepeele site 2008

Documents





Crepeele site 2007 - summary information

<http://archives.brandonu.ca/en/permalink/descriptions11813>

Part Of: RG 7 Beverley Nicholson fonds

Description Level: sub sub sub series

Series Number: 1.2.4.1

Accession Number: 1-2010

GMD: multiple media

Date Range: 2007

Material Details: Field journals have been scanned in multi-page PDF files. Artifact catalogues are PDF files in spreadsheet format. Photographs are in jpeg format.

History /

Biographical:

In 2007 the Brandon University Field School was held at both the Crepeele site in the Crepeele locale. Denise Ens instructed the school with Jessica McKenzie and Kate Decter as teaching assistants.

Seventeen units were excavated (XU3 - 46). Faunal (animal bone), lithics, fire cracked rock, diagnostic lithics and ceramics were recovered from the site.

Scope and Content:


Sub-sub-sub series contains: Summary information of field methodology, number and co-ordinates of excavations, personnel and their staff position.


Name Access: Crepeele site 2007 - summary information

Subject Access: Archaeology
Crepeele locale
Crepeele site DiMe-29
Crepeele site 2007

Documents

1.2.4.1_C07_summary.
pdf

 Read PDF

 Download PDF



Sarah site 2003 - field journals

<http://archives.brandonu.ca/en/permalink/descriptions11831>

Part Of: RG 7 Beverley Nicholson fonds
Description Level: sub sub sub series
Series Number: 1.3.1.2
Accession Number: 1-2010
GMD: multiple media
Date Range: 2003
Material Details: Field journals have been scanned in multi-page PDF files.
History /
Biographical:

The Sarah site was chosen for excavation based on the results of the Casselman survey. The survey recovered significant amounts of faunal remains, some ceramics and lithics from the test pits. Excavations took place in 2003 at Crepeele West (Units 1-5) and Crepeele East (Units 6-9). The site was subsequently renamed the Sarah site DiMe-28.

Field journals from 2003 contain notes concerning the Casselman survey, Crepeele and Sarah site.

Scope and Content:

Record of daily observations at the site including: excavation methods, items recovered, features, local environment and weather.

Name Access: Sarah 2003 - field journals
Subject Access: Archaeology
Crepeele locale
Sarah site DiMe-28
Sarah 2003 - field journals



Sarah site 2004 - summary information

<http://archives.brandonu.ca/en/permalink/descriptions11856>

Part Of: RG 7 Beverley Nicholson fonds
Description Level: sub sub sub series
Series Number: 1.3.2.1
Accession Number: 1-2010
GMD: multiple media
Date Range: 2004
Material Details: Field journals have been scanned in multi-page PDF files. Artifact catalogues are PDF files in spreadsheet format. Photographs are in jpeg format.

History /
Biographical:

The Sarah site was initially chosen for excavation based on the results of the Casselman survey. The survey recovered significant amounts of faunal remains, some ceramics and lithics from the test pits. Excavations took place in 2003 at the Sarah site DiMe-28.

In 2004 further excavation took place as part of a Brandon University Archaeology Field School. Units 10 to 18 were excavated with Denise Ens as the instructor and James Graham teaching assistant.

Scope and Content:

Sub-sub-sub series contains: Summary information of field methodology, number and co-ordinates of excavations, personnel and their staff position.

- Name Access: Sarah site 2004 - summary information
- Subject Access: Archaeology
- Crepeele locale
- Sarah site DiMe-28
- Sarah site 2004

Documents

ARCH 1.3. Crepeele locale

1.3.1 Sarah 2004-20

1.3.2 Sarah 2004

1.3.2.1 Summary Information

In 2004 the Brandon University Field School was held at the Sarah site on the Crepeele locale. Five units were excavated (S1, S5-9).

Denise Ens was the Instructor and James Graham the Teaching Assistant

Excavation Unit	Coordinates	Excavator
S1	49N02W76E	Carole Thompson
S5	49N02W76E	James McLeone
S6	49N02W76E	James McLeone
S7	49N02W76E	James McLeone
S8	49N02W76E	James McLeone
S9	49N02W76E	James McLeone
S10	49N02W76E	James McLeone
S11	49N02W76E	James McLeone
S12	49N02W76E	James McLeone
S13	49N02W76E	James McLeone
S14	49N02W76E	James McLeone
S15	49N02W76E	James McLeone
S16	49N02W76E	James McLeone
S17	49N02W76E	James McLeone
S18	49N02W76E	James McLeone

1.3.2.1_Sarah04_Summary.pdf

Read PDF

Download PDF



Graham site 2004 - summary information

<http://archives.brandonu.ca/en/permalink/descriptions11888>

Part Of:	RG 7 Beverley Nicholson fonds
Description Level:	sub sub sub series
Series Number:	1.4.1.1
Accession Number:	1-2010
GMD:	multiple media
Date Range:	2004
Material Details:	Field journals have been scanned in multi-page PDF files. Artifact catalogues are PDF files in spreadsheet format. Photographs are in jpeg format.

History /

Biographical:

The Graham site was initially designated as a separate site early in the testing of the Crepeele locale due to what appeared to be a distinction between Early and Late Woodland ceramics. Subsequent testing has shown that this distinction was premature and that the cultural mosaic represented in the western section of the Crepeele locale does not readily separate in this manner.

Scope and Content:

Sub-sub-sub series contains: Summary information of field methodology, number and co-ordinates of excavations, personnel and their staff position.

Name Access:	Graham site 2004 - summary information
Subject Access:	Archaeology Crepeele locale Graham site DiMe-30 Graham site 2004

Documents

ARCH 1.1 Crepeele Locale
1.4 Graham Site 2004-20
1.4.1 Graham 2004
1.4.1.1 Summary Information
Core Unit: Thomas Playford, Core Wayne Kuhn and Andrew Richards
Graham Site 1.4.1.1
Excavation Unit: Catalogue Coordinates
Site 1.4.1.1
Excavation: Thomas Playford & Wayne Kuhn & Andrew Richards
The units 1 and 1.1 were excavated with the Crepeele site in 2004 and were re-excavated in the Graham site 2004-20 keeping the same unit numbers.

1.4.1.1_Graham04_Summary.pdf

Read PDF

Download PDF



Graham site 2004 - field journals

<http://archives.brandonu.ca/en/permalink/descriptions11890>

Part Of: RG 7 Beverley Nicholson fonds
Description Level: sub sub sub series
Series Number: 1.4.1.2
Accession Number: 1-2010
GMD: multiple media
Date Range: 2004
Material Details: Field journals have been scanned in multi-page PDF files.

History /

Biographical:

Graham units 9 and 14 were excavated with the Crepeele site in 2004 and were reassigned to the Graham site DiMe-30 keeping the same unit numbers.

Field journals from 2004 contain notes concerning the Graham, Sarah and Atkinson sites. The relevant page numbers are noted.

Scope and Content:

Record of daily observations at the site including: excavation methods, items recovered, features, local environment and weather.

Name Access: Graham site 2004 - field journals
Subject Access: Archaeology
Crepeele locale
Graham site DiMe-30
Graham site 2004



Lovstrom Block B - site co-ordinates

<http://archives.brandonu.ca/en/permalink/descriptions12480>

Part Of: RG 7 Beverley Nicholson fonds

Description Level: sub sub sub series

Series Number: 3.3.1.1

Accession Number: 1-2010

GMD: multiple media

Date Range: 1987

Material Details: Field journals have been scanned in multi-page PDF files. Artifact catalogues are PDF files in spreadsheet format. Photographs are in jpeg format.

History /

Biographical:

Large scale excavations of five block sites took place in 1987 under the direction of Bev Nicholson with Jane Gibson as crew chief. Block B consisted of 21 excavation units.

Scope and Content:

Sub-sub-sub series contains: Summary information of field methodology, number and co-ordinates of excavations, personnel and their staff position.

Name Access: Lovstrom Block B - site co-ordinates

Subject Access: Archaeology
Lovstrom locale
Lovstrom Block B

Documents

ABC W & L Lovstrom Locale 1987

3.3.1 Lovstrom Block B

3.3.1.1 Summary Information

Large scale excavations of five block sites took place in 1987 under the direction of Bev Nicholson with Jane Gibson as crew chief. Block B consisted of 21 excavation units.

Block B consisted of 21 excavation units located near T1-4 at (Original Coordinates 20004000 of original coordinates 20004000).

The actual dates were established as 1987, a subsequent date with the co-ordinates of 20004000 was used to facilitate computer cataloging.

Excavation	Original Coord.	Original Coord.	Crew
101-01	20004000	20004000	Bev Nicholson
101-02	20004000	20004000	Bev Nicholson
101-03	20004000	20004000	Bev Nicholson
101-04	20004000	20004000	Bev Nicholson
101-05	20004000	20004000	Bev Nicholson
101-06	20004000	20004000	Bev Nicholson
101-07	20004000	20004000	Bev Nicholson
101-08	20004000	20004000	Bev Nicholson
101-09	20004000	20004000	Bev Nicholson
101-10	20004000	20004000	Bev Nicholson
101-11	20004000	20004000	Bev Nicholson
101-12	20004000	20004000	Bev Nicholson
101-13	20004000	20004000	Bev Nicholson
101-14	20004000	20004000	Bev Nicholson
101-15	20004000	20004000	Bev Nicholson
101-16	20004000	20004000	Bev Nicholson
101-17	20004000	20004000	Bev Nicholson
101-18	20004000	20004000	Bev Nicholson
101-19	20004000	20004000	Bev Nicholson
101-20	20004000	20004000	Bev Nicholson
101-21	20004000	20004000	Bev Nicholson

3.3.1.1_Sum.pdf

Read PDF

Download PDF



Lovstrom Block C - site co-ordinates

<http://archives.brandonu.ca/en/permalink/descriptions12518>

Part Of: RG 7 Beverley Nicholson fonds

Description Level: sub sub sub series

Series Number: 3.4.1.1

Accession Number: 1-2010

GMD: multiple media

Date Range: 1987

Material Details: Field journals have been scanned in multi-page PDF files. Artifact catalogues are PDF files in spreadsheet format. Photographs are in jpeg format.

History /

Biographical:

Large scale excavations of five block sites took place in 1987 under the direction of Bev Nicholson with Jane Gibson as crew chief. Block C consisted of nine excavation units. Miggs Green was Block C assistant.

Scope and Content:

Sub-sub-sub series contains: Summary information of field methodology, number and co-ordinates of excavations, personnel and their staff position.


Name Access: Lovstrom Block C - site co-ordinates

Subject Access: Archaeology
Lovstrom locale
Lovstrom Block C

Documents

3.4.1.1_Sum.pdf

 Read PDF

 Download PDF



Lovstrom Block D 1987 - site co-ordinates

<http://archives.brandonu.ca/en/permalink/descriptions12542>

Part Of: RG 7 Beverley Nicholson fonds

Description Level: sub sub sub series

Series Number: 3.5.1.1

Accession Number: 1-2010

GMD: multiple media

Date Range: 1987

Material Details: Field journals have been scanned in multi-page PDF files. Artifact catalogues are PDF files in spreadsheet format. Photographs are in jpeg format.

History /

Biographical:

Large scale excavations of five block sites took place in 1987 under the direction of Bev Nicholson with Jane Gibson as crew chief. Block D consisted of 2 excavation units.

Scope and Content:

Sub-sub-sub series contains: Summary information of field methodology, number and co-ordinates of excavations, personnel and their staff position.

Name Access: Lovstrom Block D 1987 - site co-ordinates

Subject Access: Archaeology

Lovstrom locale

Lovstrom Block D

Documents

ABC W & L Lovstrom Locale 1987
3.5.1.1 Summary Information

Large scale excavations of five block sites took place in 1987 under the direction of Bev Nicholson with Jane Gibson as crew chief. Block D consisted of 2 excavation units.

Block D consisted of 2 excavation units. The initial plan was established as 1987, a subsequent plan with the coordinates of 1987/1988 was used in the field as a complete replacement. The final coordinates are as follows:

Excavation	Original Co-ords	Original Co-ords	Co-ords	Co-ords
101-11	541042N	157546W	Point 1 (Boulder)	
101-12	541042N	157546W	Point 2 (Boulder)	

3.5.1.1_Sum.pdf

Read PDF

Download PDF

Graham site 2005 - summary information

<http://archives.brandonu.ca/en/permalink/descriptions11905>

Part Of: RG 7 Beverley Nicholson fonds

Description Level: sub sub sub series



Series Number: 1.4.2.1
Accession Number: 1-2010
GMD: multiple media
Date Range: 2005
Material Details: Field journals have been scanned in multi-page PDF files. Artifact catalogues are PDF files in spreadsheet format. Photographs are in jpeg format.

History /

Biographical:

The Graham site is located south of the Crepeele site. Due to the close proximity the Graham and Crepeele sites have both been the site of the Brandon University Archaeological Field School.

In 2005 both sites were excavated as part of the Field School experience instructed by Denise Ens with teaching assistant James Graham Six units (XU 1-6) were excavated at the Graham site.

Recoveries included faunal (mostly bison), lithics (points, scrapers), and ceramics.

Scope and Content:

Sub-sub-sub series contains: Summary information of field methodology, number and coordinates of excavations, personnel and their staff position.

Name Access: Graham site 2005 - summary information

Subject Access: Archaeology
Crepeele locale
Graham site DiMe-30
Graham site 2005

Documents

ABR 10.1, Crepeele Locale
1.2 Graham Site DiMe 30
1.4.2 Graham 2005
1.4.2.1 Summary Information

Excavation Unit	Catalogue Coordinates	Excavator
XU 1	5950792W	Nicholas Orsiddle
XU 2	5950792W	Michael Oliver
XU 3	5950792W	Lawrence Foulds
XU 4	5950792W	Anne T. Roberts
XU 5	5950792W	
XU 6	5950792W	

1.4.2.1_Graham05_Su
mmmary.pdf

Read PDF

Download PDF