

S. J. McKee Archives



9th street south from Pacific avenue

<http://archives.brandonu.ca/en/permalink/descriptions6446>

Part Of: Alf Fowler collection

Creator: Davidson & Gowen

Description Level: Item

Item Number: 6-1999.21

Accession Number: 6-1999

GMD: graphic

Date Range: ca. 1911

Physical Description: 9" x 7" (b/w)

Custodial History:

See fonds level description of the Alf Fowler collection for custodial history.

Scope and Content:

Photo was taking from Pacific Avenue looking south down 9th Street. Visible in the photo are the Grand View Hotel and A.E. McKenzie Seeds Ltd.

Storage Range: RG 5 Western Manitoba Manuscript collection - photograph storage drawer

Images





Rosser avenue east from 11th street

<http://archives.brandonu.ca/en/permalink/descriptions6447>

Part Of: Alf Fowler collection

Creator: Davidson & Gowen

Description Level: Item

Item Number: 6-1999.22

Accession Number: 6-1999

GMD: graphic

Date Range: ca. 1911

Physical Description: 9.25" x 7" (b/w)

Custodial History:

See fonds level description of the Alf Fowler collection for custodial history.

Scope and Content:

Photo was taken of Rosser Avenue, looking east from 11th Street. Visible in the photo are the Merchant's Bank of Canada, A. Smith, and the Union Bank of Canada. A number of people and vehicles are also visible.

Storage Range: RG 5 Western Manitoba Manuscript collection - photograph storage drawer

Images



Nation & Shewan block

<http://archives.brandonu.ca/en/permalink/descriptions6448>

Part Of: Alf Fowler collection

Creator: Davidson & Gowen

Description Level: Item

Item Number: 6-1999.23

Accession Number: 6-1999

GMD: graphic

Date Range: 1912

Physical Description: 9.5" x 7.25" (b/w)

History /

Biographical:

Erected in 1889, at 806 Rosser Avenue (the southeast corner of Rosser Avenue and 7th Street), the building was designed by Brandon architect W.H. Shillinglaw. At the time of its construction the structure housed the Nation Department Store, which became Nation & Shewan Department Store in 1894. One of Brandon's largest and most successful drygoods businesses, the venture was owned and operated by Fred Nation and Alexander Shewan.

Built adjacent to an existing three storey brick building known as the A.D. Rankin Block (built sometime between 1885 and 1888), this smaller building was eventually absorbed by the Nation and Shewan Block after 1897, when Rankin Drygoods moved into the newly constructed Syndicate Block located farther east down Rosser Ave. Later, the Rankin Block became known as Nation Chambers. These two structures comprised what was known as the Nation and Shewan Block.

Major improvements were made to the store and an annex was added in 1910. Some of the renovation additions included, but were not limited to: an updated frontage with new copper sash windows and prismatic glass tops, plate glass windows, new fixtures and carpet. With the renovations the floor space of the business was almost doubled. The stock of the business also increased, with the Brandon Weekly Sun reporting that when finished, Nation & Shewan would be a "store of which the citizens of Brandon will be justly proud."

The drygoods firm operated until Nation's death 1926, when it became known as A. Shewan Limited. From 1933 to 1944, the business was known as Shewan and Son. Shortly thereafter, the Metropolitan Stores Ltd began operating out of the Nation & Shewan Block.

In 2000, the Town Centre prepared to knock down what was then known as the Red Apple Building, the former Nation & Shewan Block. The demolition was to make way for the new atrium and entrance for the mall, and begin a new period of redevelopment at the downtown shopping centre.

Custodial History:

See fonds level description of the Alf Fowler collection for custodial history.

Scope and Content:

Photo shows the front of the Nation & Shewan Block, which was located in the 800 block of Rosser Avenue on the southside.

Storage Range: RG 5 Western Manitoba Manuscript collection - photograph storage drawer

Images





Corner of 10th street and Rosser avenue

<http://archives.brandonu.ca/en/permalink/descriptions6449>

Part Of: Alf Fowler collection

Creator: Davidson & Gowen

Description Level: Item

Item Number: 6-1999.24

Accession Number: 6-1999

GMD: graphic

Date Range: ca. 1911

Physical Description: 9.25" x 7" (b/w)

Custodial History:

See fonds level description of the Alf Fowler collection for custodial history.

Scope and Content:

Photo shows the the corner of 10th Street and Rosser Avenue, looking northwest. Visible businesses include: the Canadian Bank of Commerce; The Sun; Canadian Pacific; Brandon Brick Co.; T. Bronson; Fraser and Co.; and the John E. Smith Block.

Storage Range: RG 5 Western Manitoba Manuscript collection - photograph storage drawer

Images



Wm Gray & Sons Co. Ltd.

<http://archives.brandonu.ca/en/permalink/descriptions6450>

Part Of: Alf Fowler collection

Creator: Davidson & Gowen

Description Level: Item

Item Number: 6-1999.25

Accession Number: 6-1999

GMD: graphic

Date Range: 1912

Physical Description: 9.5" x 7.5" (b/w)

History /

Biographical:

In the period leading up to World War I, Brandon, due to its excellent railway connections, was also home to branch offices of a number of large manufacturing companies during this period. Among those manufacturing outfits were William Gray & Sons Co. Ltd., and Mason Campbell Company. Based in Chatham, ON, these companies were leading manufacturers of carriages, sleighs and light wagons and fanning mills respectively. Constructed in 1907, by Giddings and Wyman for approximately \$15,000, the four-storey structure was located at 801 Pacific Avenue and was shared by the two companies.

In response to the new technology of the gasoline engine, Wm. Gray & Sons entered into a partnership with the Dort Motor Company, of Flint, MI in 1915, and began designing and producing the Gray-Dort automobile; Mason Campbell's Chatham plant became the assembly plant for the Gray-Dort. Production of the car spanned nearly ten years with over 20,000 Gray Dorts made. The company had over 300 dealers across the country, including one in Brandon.

In 1924, the Dort Motor Company decided to cease production, sending the Gray Company into significant debt. They were forced to close their doors in 1925, when Gray was unable to find a suitable partner to manufacture the car.

Following the closure of Gray-Campbell Ltd., portions of the warehouse were used by a number of businesses between 1925 - 1948, including farm and agricultural implement concerns Canadian Stover Co., Cameron & Rathwell, and Case (J.I.) Co. Ltd., the McKay Fruit Co. Ltd., Brazzell Motors, AC Bateman (electrician), Samuel Coxe (veterinarian) and Burns & Co. Ltd (packing house and egg grading station).

In 1949, the warehouse was taken over by Canada Grocers Ltd., who remained until 1973, when the building became Kullberg's Big Warehouse. When Kullberg's moved their warehouse to the old International Harvester building in 2004, the Wm. Gray & Sons Co. Ltd. building was torn down.

Custodial History:

See fonds level description of the Alf Fowler collection for custodial history.

Scope and Content:

Photo shows the front of William Gray & Sons Co. Ltd. Wording and signs on the building include: "High Grade Carriages, Chatham, Ont."; "Scales"; "Incubators"; "The Manson Campbell Co. Ltd."; "Kitchen Cabinets"; "Chatham Fanning Mills"; "Emerson (New Standard) Mowers"; "Tudhope Carriages"; "Agency for Sylvester Drills"; "Stover Coy Gasoline Engines"; "Gray-Campbell, High Grade Carriages"; and "Phone 771."

Storage Range: RG 5 Western Manitoba Manuscript collection - photograph storage drawer

Images





The Brandon Brewing Co.

<http://archives.brandonu.ca/en/permalink/descriptions6451>

Part Of: Alf Fowler collection
 Description Level: Item
 Item Number: 6-1999.26
 Accession Number: 6-1999
 Physical Description: 9" x 7" (b/w)
 Storage Range: RG 5 Western Manitoba Manuscript collection - photograph storage drawer

Images



Northwest Thresher Co.

<http://archives.brandonu.ca/en/permalink/descriptions6452>

Part Of: Alf Fowler collection
 Description Level: Item
 Item Number: 6-1999.27
 Accession Number: 6-1999
 Physical Description: 9.25" x 7.25" (b/w)
 Storage Range: RG 5 Western Manitoba Manuscript collection - photograph storage drawer

Images





The Rat Portage Lumber Co. Ltd.

<http://archives.brandonu.ca/en/permalink/descriptions6453>

Part Of: Alf Fowler collection

Creator: Davidson & Gowen

Description Level: Item

Item Number: 6-1999.28

Accession Number: 6-1999

GMD: graphic

Date Range: ca. 1911

Physical Description: 9.25" x 7.25" (b/w)

History /

Biographical:

The Rat Portage Lumber Company Ltd. was located on 10th Street at the corner of Princess Avenue.

Custodial History:

See fonds level description of the Alf Fowler collection for custodial history.

Scope and Content:

Photo shows premises of The Rat Portage Lumber Co. Ltd. - lumber, sashes, doors, mouldings, hardwood & interior finish, brick, glass, builders supplies. The view is south along 11th Street.

Storage Range: RG 5 Western Manitoba Manuscript collection - photograph storage drawer

Images





Somerville & Co. Marble Works

<http://archives.brandonu.ca/en/permalink/descriptions6454>

Part Of: Alf Fowler collection

Creator: Davidson & Gowen

Description Level: Item

Item Number: 6-1999.29

Accession Number: 6-1999

GMD: graphic

Date Range: ca. 1911

Physical Description: 9" x 7" (b/w)

History /

Biographical:

The Somerville Steam Marble & Granite Works was located at 1417 Rosser Avenue.

Custodial History:

See fonds level description of the Alf Fowler collection for custodial history.

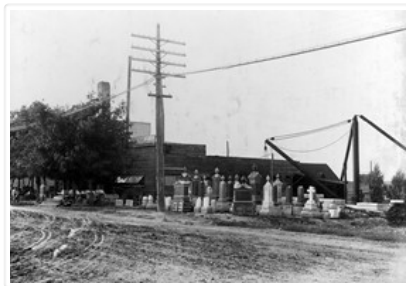
Scope and Content:

Photo shows the premises of Somerville & Co. Marble works.

Notes: Negatives located with photograph

Storage Range: RG 5 Western Manitoba Manuscript collection - photograph storage drawer

Images





Brandon Sandstone Brick Co.

<http://archives.brandonu.ca/en/permalink/descriptions6455>

Part Of: Alf Fowler collection

Creator: Davidson & Gowen

Description Level: Item

Item Number: 6-1999.30

Accession Number: 6-1999

GMD: graphic

Date Range: ca. 1911

Physical Description: 9.5" x 7" (b/w)

History /

Biographical:

The Brandon Sandstone Brick Co. Ltd. was located on Princess Avenue between 29th and 30th Streets.

Custodial History:

See fonds level description of the Alf Fowler collection for custodial history.

Scope and Content:

Photo shows the premises of the Brandon Sandstone Brick Co.

Storage Range: RG 5 Western Manitoba Manuscript collection - photograph storage drawer

Images





Brandon Implement & Manufacturing Co. Ltd.

<http://archives.brandonu.ca/en/permalink/descriptions6456>

Part Of: Alf Fowler collection
Description Level: Item
Item Number: 6-1999.31
Accession Number: 6-1999
Physical Description: 9.25" x 7.25" (b/w)
Storage Range: RG 5 Western Manitoba Manuscript collection - photograph storage drawer

Images





Cockshutt Plow Company Limited

<http://archives.brandonu.ca/en/permalink/descriptions6457>

Part Of: Alf Fowler collection

Creator: Davidson & Gowen

Description Level: Item

Item Number: 6-1999.32

Accession Number: 6-1999

GMD: graphic

Date Range: ca. 1911

Physical Description: 9.5" x 7.25" (b/w)

History /

Biographical:

The Cockshutt Plow Co. was located on Pacific Avenue opposite 6th Street.

Custodial History:

See fonds level description of the Alf Fowler collection for custodial history.

Scope and Content:

Photo shows the premises of Cockshutt Plow Company, Limited. Wording on the building includes: carriages; wagons and sleighs; seeding-machines; and traction-plows.

Storage Range: RG 5 Western Manitoba Manuscript collection - photograph storage drawer

Images





Brandon Produce Company

<http://archives.brandonu.ca/en/permalink/descriptions6458>

Part Of: Alf Fowler collection

Creator: Davidson & Gowen

Description Level: Item

Item Number: 6-1999.33

Accession Number: 6-1999

GMD: graphic

Date Range: ca. 1911

Physical Description: 7.25" x 9" (b/w)

History /

Biographical:

The Brandon Produce Company was located at 1018 Pacific Avenue.

Custodial History:

See fonds level description of the Alf Fowler collection for custodial history.

Scope and Content:

Photo shows the premises of the Brandon Produce Company.

Storage Range: RG 5 Western Manitoba Manuscript collection - photograph storage drawer

Images





International Harvester Company of America

<http://archives.brandonu.ca/en/permalink/descriptions6459>

Part Of: Alf Fowler collection

Creator: Davidson & Gowen

Description Level: Item

Item Number: 6-1999.34

Accession Number: 6-1999

GMD: graphic

Date Range: ca. 1911

Physical Description: 9.25" x 7.25" (b/w)

History /

Biographical:

The International Harvester Company of America building was located on Pacific Avenue at the corner of 18th Street.

Custodial History:

See fonds level description of the Alf Fowler collection for custodial history.

Scope and Content:

Photo shows the premises of the International Harvester Company of America.

Storage Range: RG 5 Western Manitoba Manuscript collection - photograph storage drawer

Images





Borbridge Wholesale Saddlery

<http://archives.brandonu.ca/en/permalink/descriptions6460>

Part Of:	Alf Fowler collection
Description Level:	Item
Item Number:	6-1999.35
Accession Number:	6-1999
Physical Description:	7" x 9" (b/w)
Storage Range:	RG 5 Western Manitoba Manuscript collection - photograph storage drawer

Images





The Brandon Creamery & Supply Co., Ltd.

<http://archives.brandonu.ca/en/permalink/descriptions6461>

Part Of: Alf Fowler collection
Description Level: Item
Item Number: 6-1999.36
Accession Number: 6-1999
Physical Description: 9.25" x 7.25" (b/w)
Storage Range: RG 5 Western Manitoba Manuscript collection - photograph storage drawer

Images





Brandon Cold Storage

<http://archives.brandonu.ca/en/permalink/descriptions6462>

Part Of: Alf Fowler collection
Description Level: Item
Item Number: 6-1999.37
Accession Number: 6-1999
Physical Description: 9.25" x 7.25" (b/w)
Storage Range: RG 5 Western Manitoba Manuscript collection - photograph storage drawer

Images





Hanbury Manufacturing Company

<http://archives.brandonu.ca/en/permalink/descriptions6463>

Part Of: Alf Fowler collection

Creator: Davidson & Gowen

Description Level: Item

Item Number: 6-1999.38

Accession Number: 6-1999

GMD: graphic

Date Range: ca. 1911

Physical Description: 9.25" x 7.25" (b/w)

History /

Biographical:

Hanbury Manufacturing Company Ltd. was established in 1881. Its office was located on Assiniboine Avenue and 6th Street North, with its warehouse and mills at 603 Assiniboine Avenue.

Custodial History:

See fonds level description of the Alf Fowler collection for custodial history.

Scope and Content:

Photo shows the premises of the Hanbury Manufacturing Company. Wording on the building includes: sash doors and mouldings; and wholesale and retail. The photograph also includes a number of residential buildings south of Assiniboine Avenue.

Storage Range: RG 5 Western Manitoba Manuscript collection - photograph storage drawer

Images





Hanbury Hardware Co., Limited

<http://archives.brandonu.ca/en/permalink/descriptions6464>

Part Of: Alf Fowler collection

Creator: Davidson & Gowen

Description Level: Item

Item Number: 6-1999.39

Accession Number: 6-1999

GMD: graphic

Date Range: ca. 1911

Physical Description: 9.5" x 7.25" (b/w)

History /

Biographical:

The Hanbury Hardware Company Limited was located at 703 Pacific Avenue.

Custodial History:

See fonds level description of the Alf Fowler collection for custodial history.

Scope and Content:

Photo shows the premises of the Hanbury Hardware Co. Additional signs on the building read: "Walter M. Borbride, Harness Trunks Val??"; "Agents for Hugh Car?n Limited, manufacturer of harne?? saddlery, trunks & bags. O???wa, Ont."; and "Canadian Coal & Com? Co."

Storage Range: RG 5 Western Manitoba Manuscript collection - photograph storage drawer

Images





The George White & Sons Co., Ltd

<http://archives.brandonu.ca/en/permalink/descriptions6465>

Part Of: Alf Fowler collection

Creator: Davidson & Gowen

Description Level: Item

Item Number: 6-1999.40

Accession Number: 6-1999

GMD: graphic

Date Range: ca. 1911

Physical Description: 9.5" x 7" (b/w)

Custodial History:

See fonds level description of the Alf Fowler collection for custodial history.

Scope and Content:

Photo shows the premises of The George White & Sons Co., Ltd. Additional wording on the building reads: "The first quality line threshing-machinery."

Storage Range: RG 5 Western Manitoba Manuscript collection - photograph storage drawer

Images

